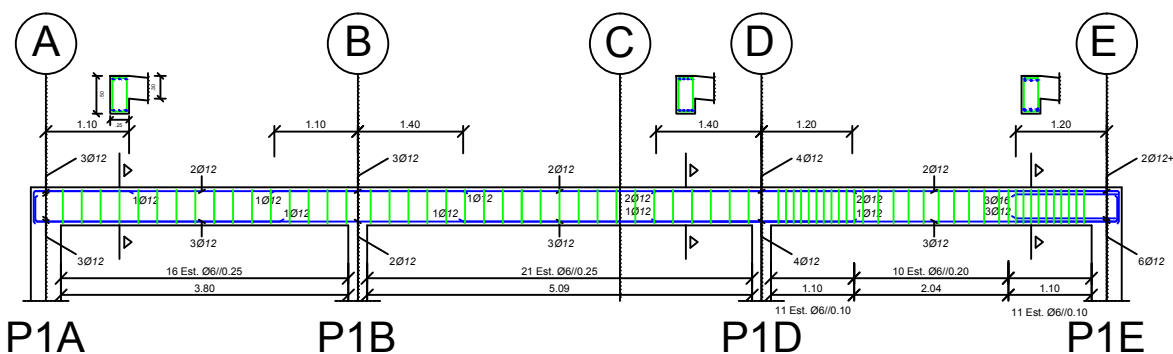
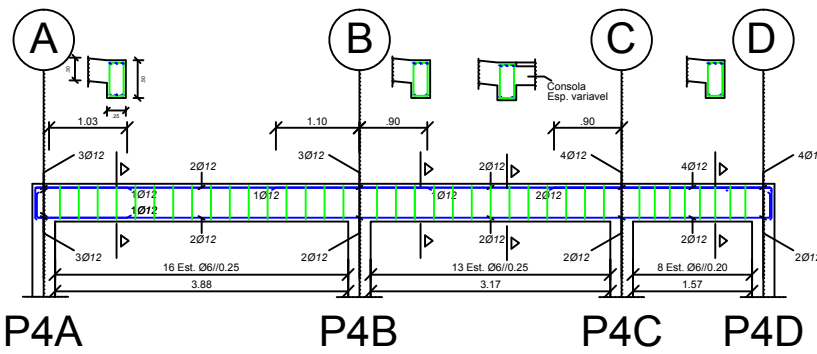


Vigas Piso 2

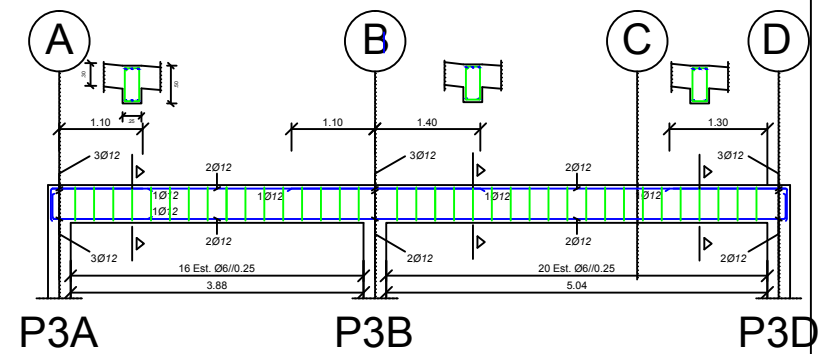
Viga 1- piso 2



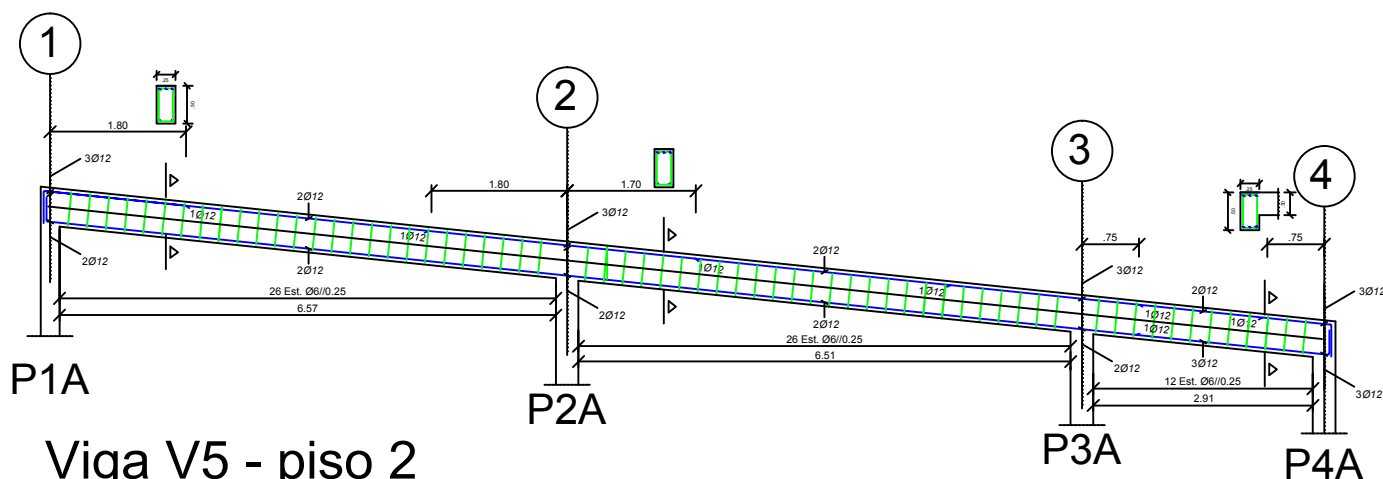
Viga V4 - piso 2



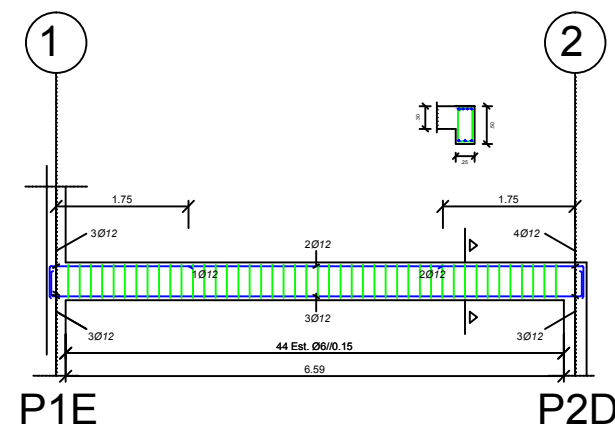
Viga V3- piso 2



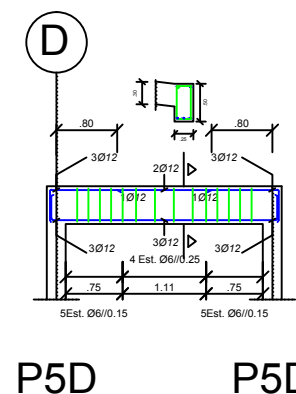
Viga VA- piso 2



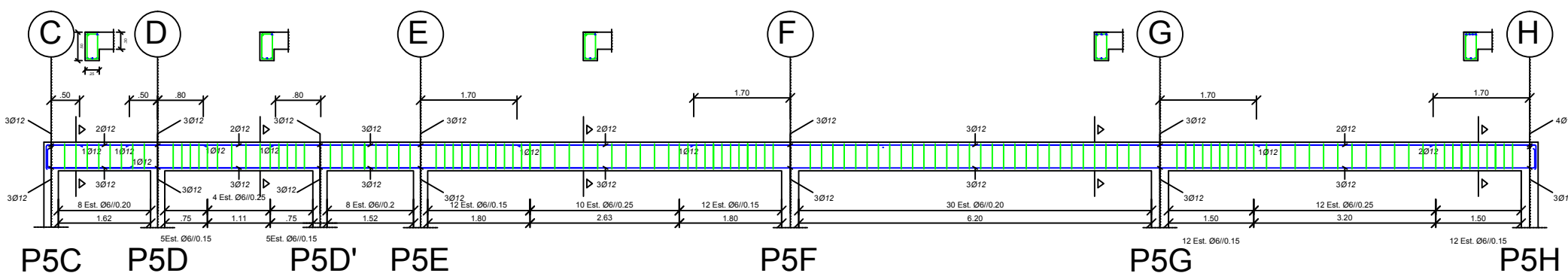
Viga VE- piso 2



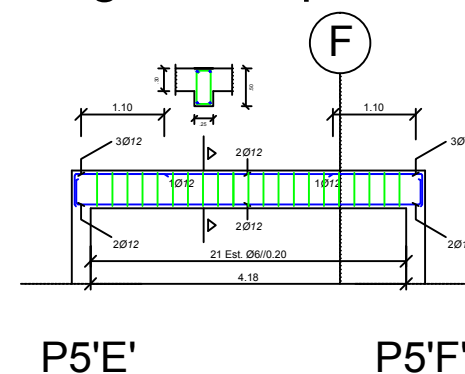
Viga V4' - piso 2



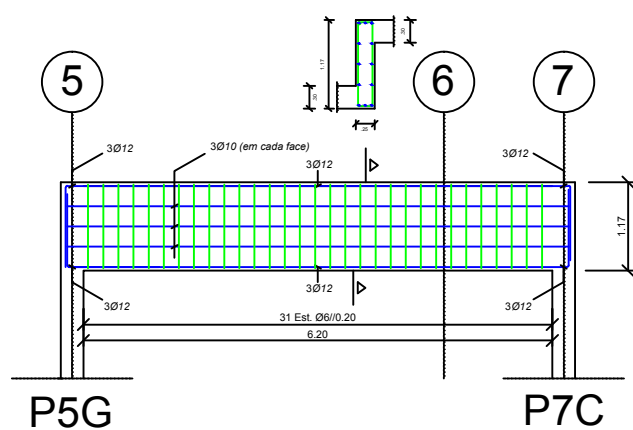
Viga V5 - piso 2



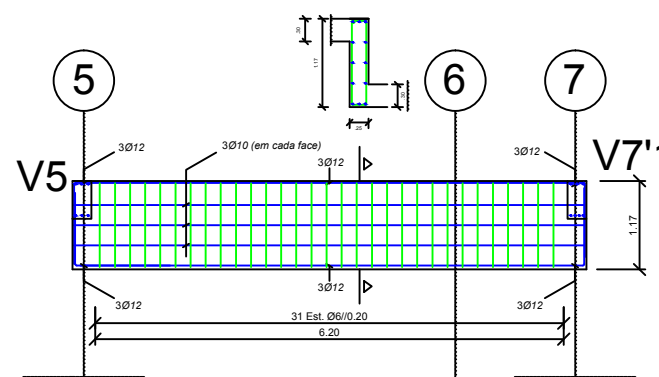
Viga V5' - piso 2



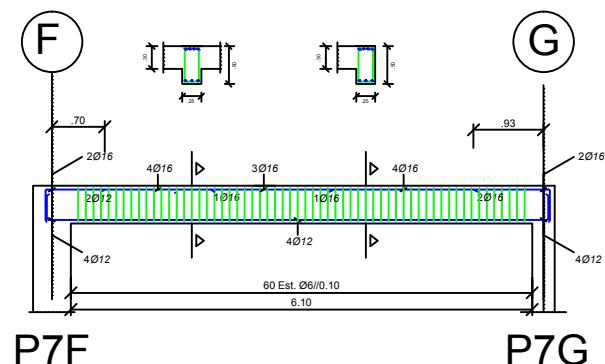
Viga VG- piso 2



Viga VF'- piso 2



Viga V7'1- piso 2



	Departamento de Engenharia Civil Mestrado em Engenharia Civil		
	Projecto de Estruturas e Fundações		
Elaborado por: Cristiano Filipe Ferreira Godinho N°30780	Descrição: Armaduras em vigas 3/4		
Perfil Estruturas Janeiro 2013	Formato: A3 Escala: 1:100	Betão Armado	Desenho: 17