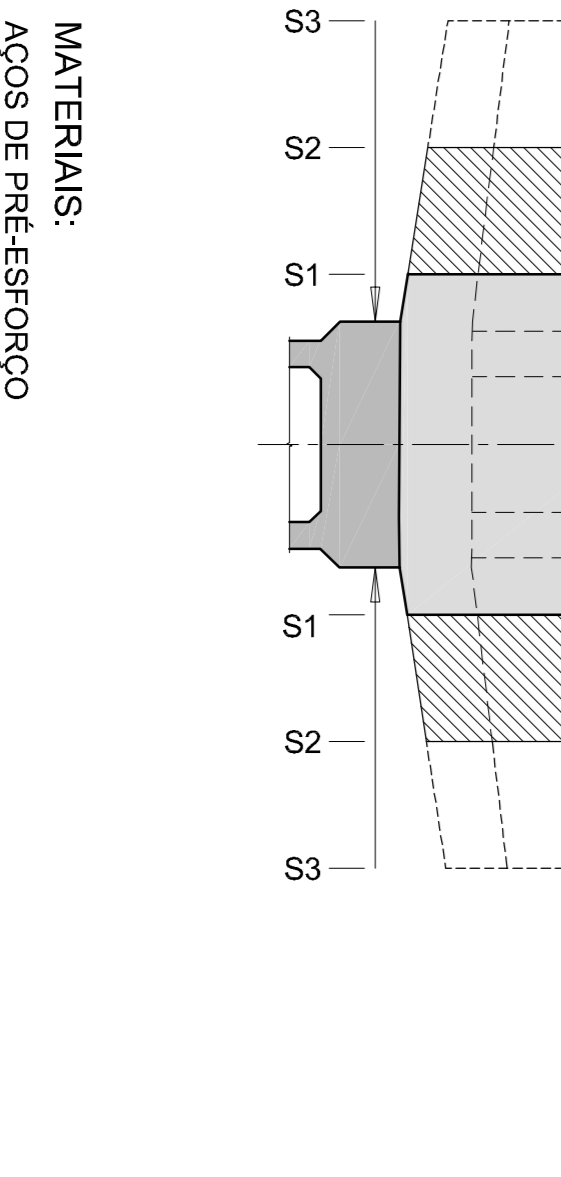
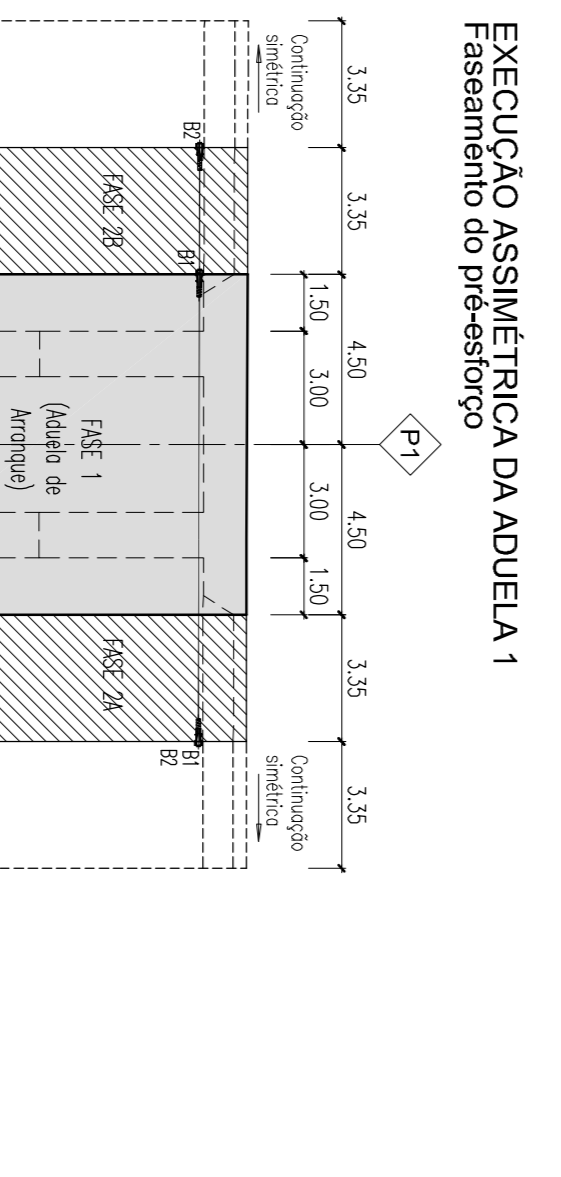
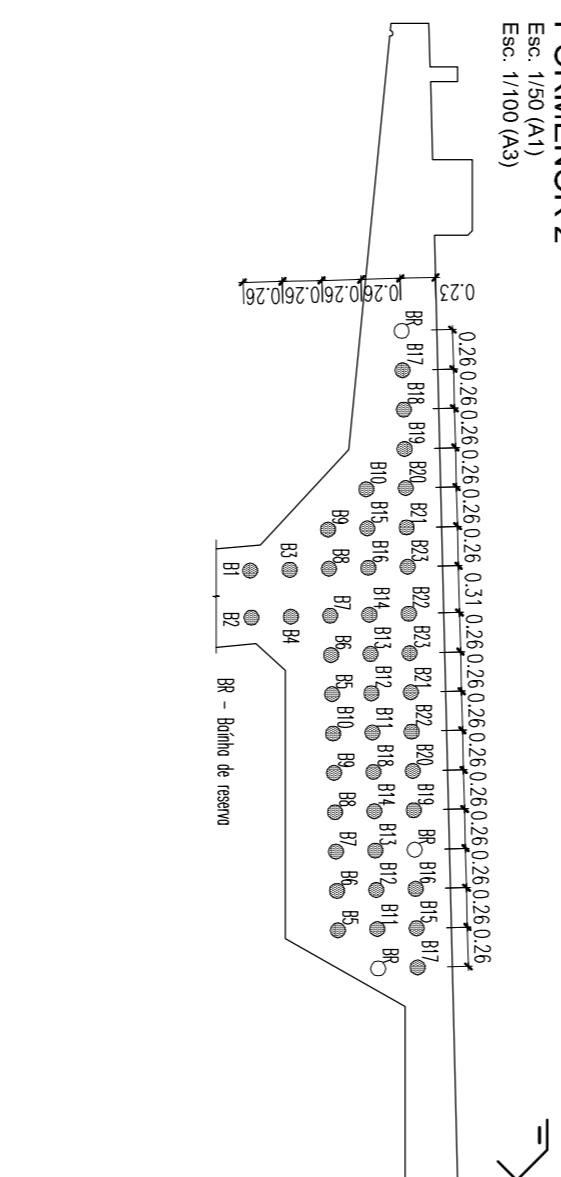
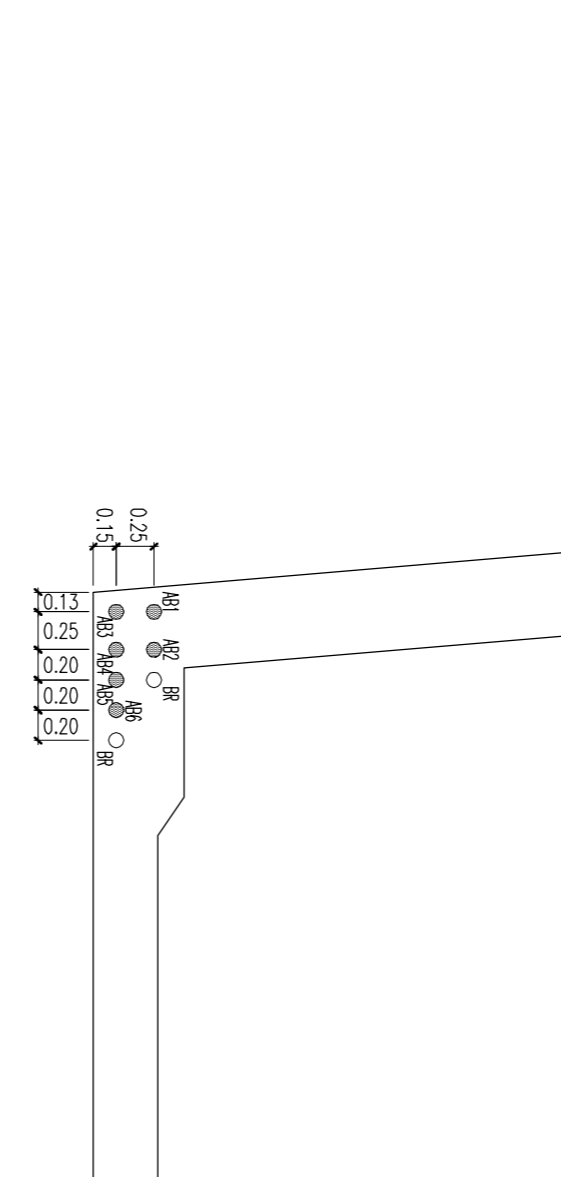
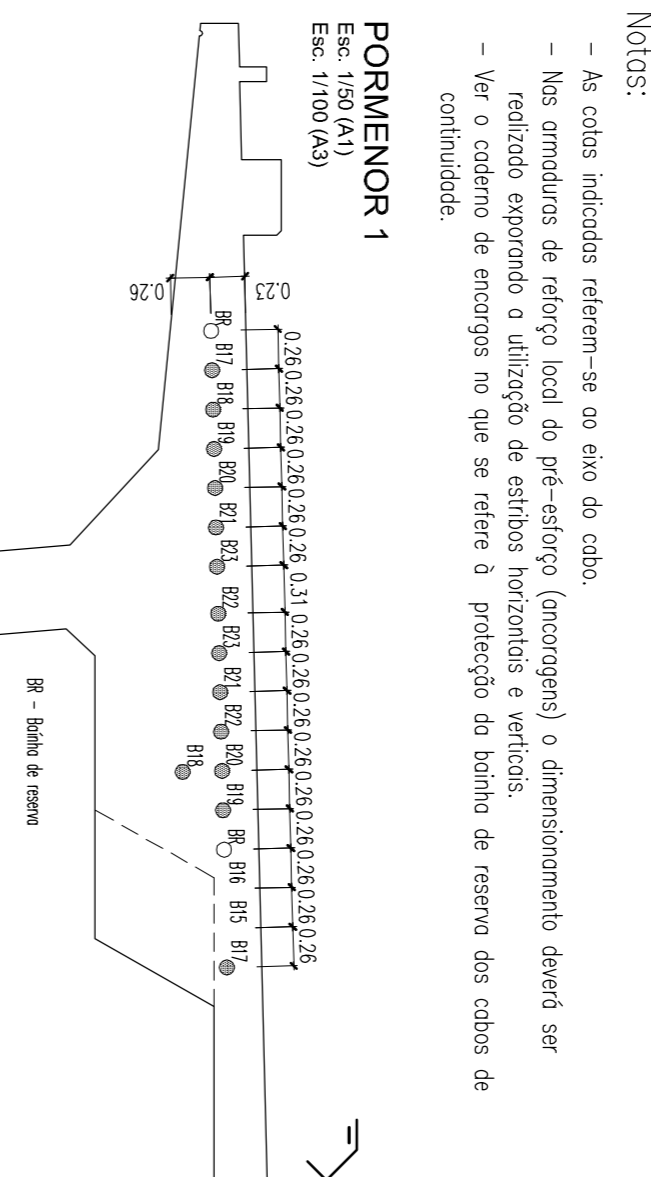
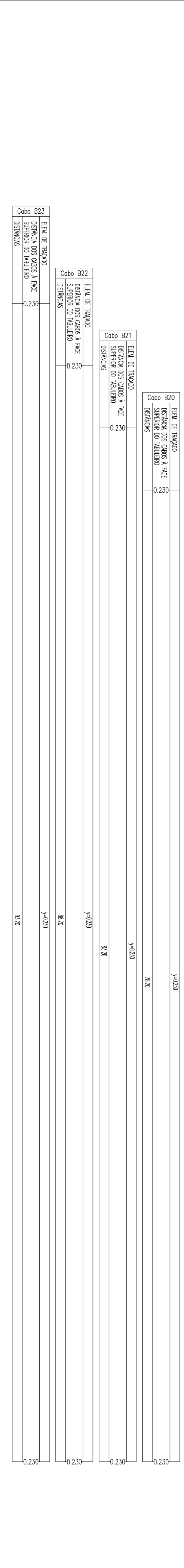
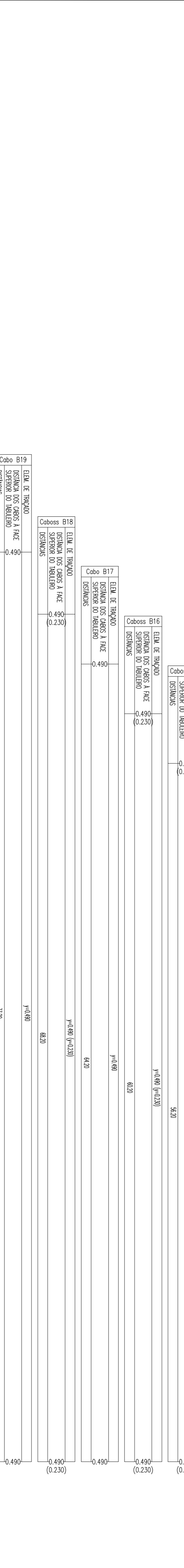
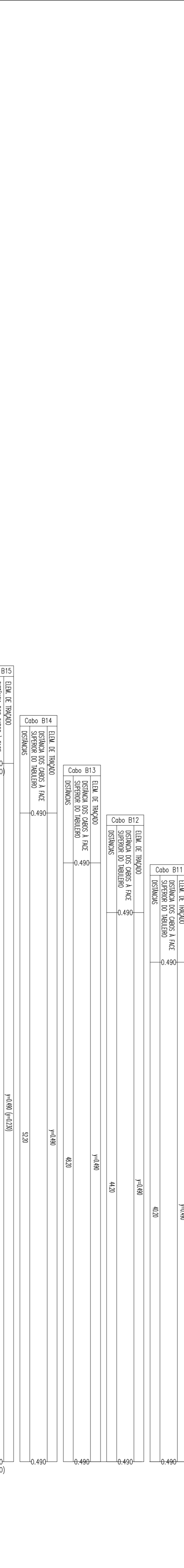
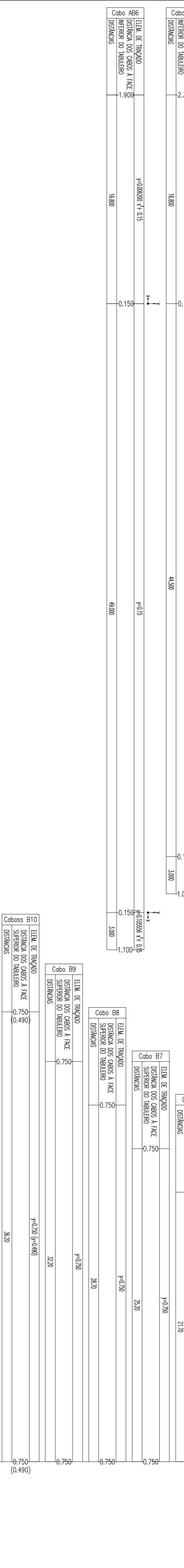
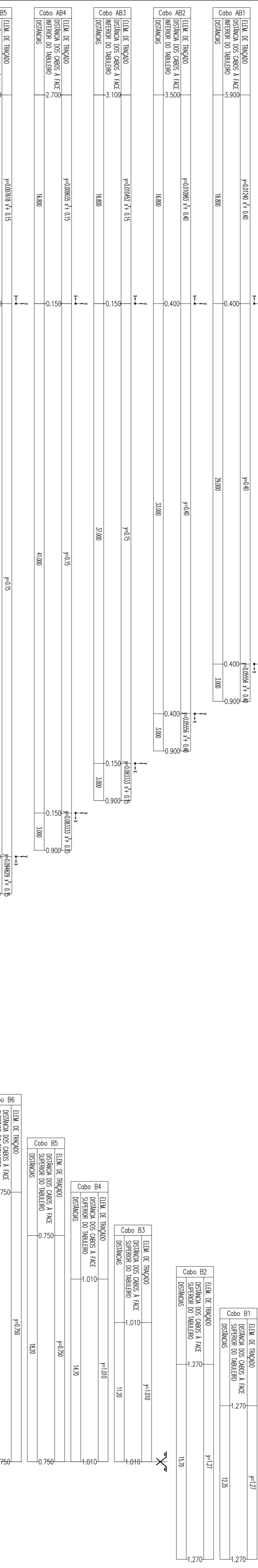
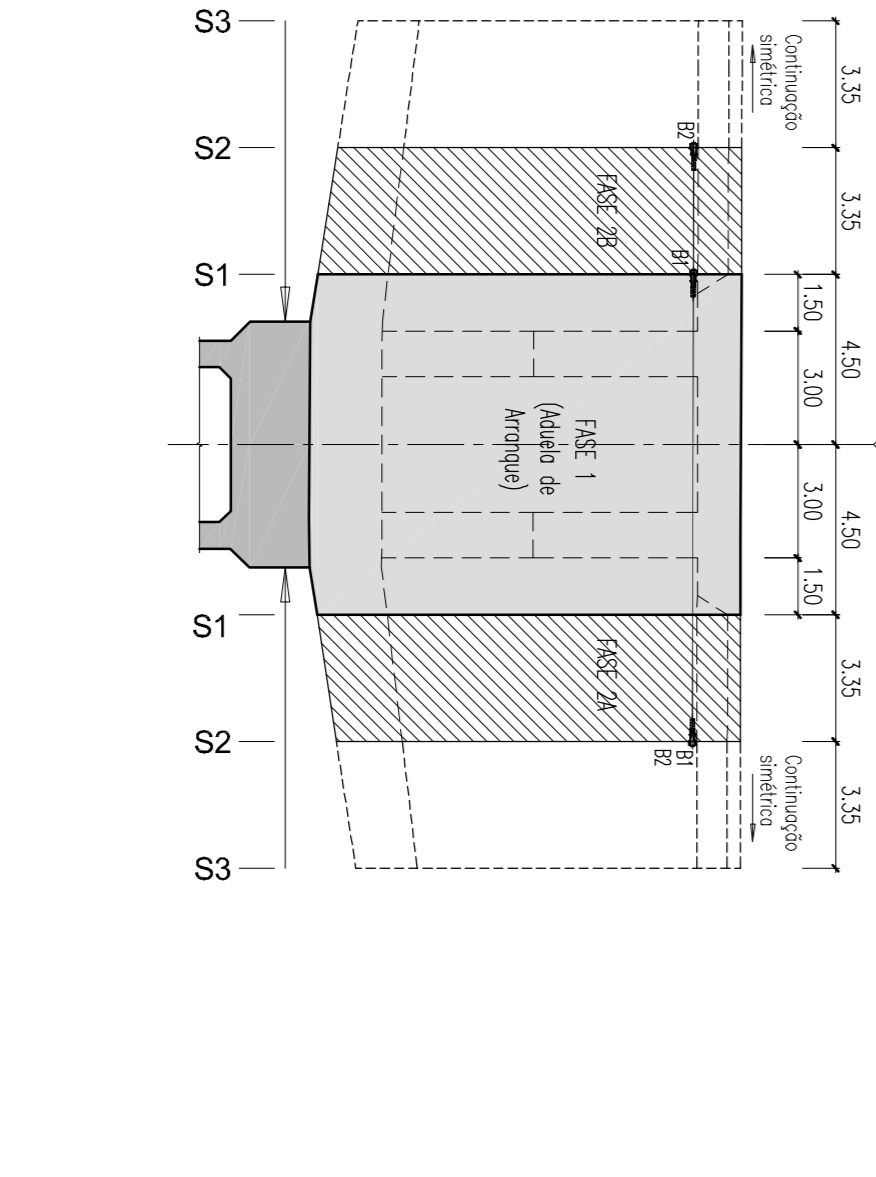


CABOS SUPERIORES				CABOS INFERIORES			
Cabo	Tip	Área (cm²)	Área (m)	Cabo	Tip	Área (cm²)	Área (m)
B1	2 unt. 22x0,6"	66	7040	AB1	2 unt. 19,6x0,6"	57	6090
B2	2 unt. 22x0,6"	66	7040	AB2	2 unt. 19,6x0,6"	57	6090
B3	2 unt. 22x0,6"	66	7040	AB3	2 unt. 19,6x0,6"	57	6090
B4	2 unt. 22x0,6"	66	7040	AB4	2 unt. 12x0,6"	36	3840
B5	4 unt. 22x0,6"	132	14080	AB5	2 unt. 12x0,6"	36	3840
B6	4 unt. 22x0,6"	132	14080	AB6	2 unt. 12x0,6"	36	3840
B7	4 unt. 22x0,6"	132	14080				
B8	4 unt. 22x0,6"	132	14080				
B9	4 unt. 22x0,6"	132	14080				
B10	4 unt. 22x0,6"	132	14080				
B11	4 unt. 22x0,6"	132	14080				
B12	4 unt. 22x0,6"	132	14080				
B13	4 unt. 22x0,6"	132	14080				
B14	4 unt. 22x0,6"	132	14080				
B15	4 unt. 22x0,6"	132	14080				
B16	4 unt. 22x0,6"	132	14080				
B17	4 unt. 22x0,6"	132	14080				
B18	4 unt. 22x0,6"	132	14080				
B19	4 unt. 22x0,6"	132	14080				
B20	4 unt. 22x0,6"	132	14080				
B21	4 unt. 22x0,6"	132	14080				
B22	4 unt. 22x0,6"	132	14080				
B23	4 unt. 22x0,6"	132	14080				

NOTAS:  
- As cotas indicadas referem-se ao eixo do cabo.  
- Nas armaduras de reforço local do pré-esforço (anconagens) o dimensionamento deverá ser feito considerando o uso de estribos horizontais e verticais.  
- Ver o conteúdo de encargos no que se refere à proteção do bota-fora dos cabos de concreto.



**EXECUÇÃO ASSIMÉTRICA DA ADUELA 1**  
Faseamento do pré-esforço



**MATERIAIS:**  
AÇOS DE PRÉ-ESFORÇO  
EM CORDÃO - tp 0,1k/tpuk = 1670/1860 MPa BAIXA RELAXAÇÃO

RED	YELLOW	GREEN	CYAN	BLUE	MAGENTA	WHITE	B	9	10	11	12	13	14	15	16	17	18	19	20	21	22	23	24	25
30	35	40	45	50	55	60	65	70	75	80	85	90	95	100	105	110	115	120	125	130	135	140	145	150