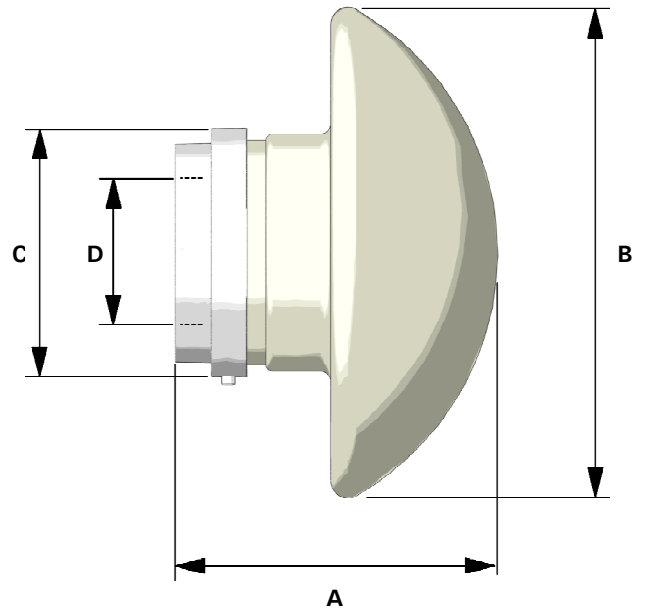
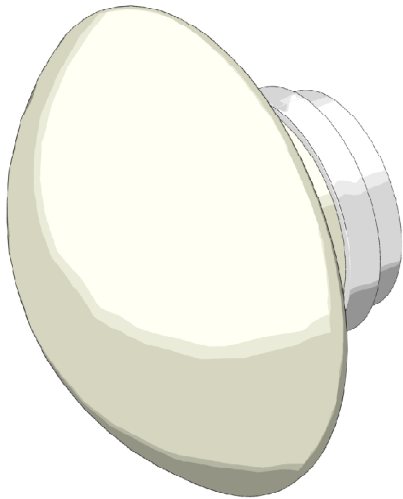


Piero Castiglioni, 2012



CODICE Code/Code Kode/Código	TENSIONE Voltage/Tension Spannung/Tensión	LAMPADINA Bulb/Ampoule Leuchtmittel/Bombilla	CARATTERISTICHE Features/Caractéristiques Merkmale/Características	DIMENSIONI in cm Dimensions in cm/Dimensions en cm Abmessungen in cm/Dimensiones en cm
4221/7/23	230V	1x13W max (LED)	IP40 	A: 9 - B: 14 - C: 7,3 - D: 5,1



Conforme alla norma di riferimento EN 60598-1:2004 e EN 60598-2-1:1989 e quindi conforme alla direttiva 2006/95.
In compliance with EN 60598-1:2004 and EN 60598-2-1:1989 and so with Directive 2006/95.
Conforme à la norme de référence EN 60598-1:2004 et EN 60598-2-1:1989 et donc à la Directive 2006/95.
Entspricht der Norm EN60598-1:2004 und EN 60598-2-1:1989 und der Richtlinie 2006/95.
Conforme a la norma EN60598-1:2004 y EN 60598-2-1:1989 y por consiguiente a la directiva 2006/95.



Applicabile su superfici normalmente infiammabili.
Can be applied to normally inflammable surfaces.
Installable sur des surfaces normalement inflammables.
Kann auf normal entflammbaren Oberflächen montiert werden.
Aplicable sobre superficies normalmente inflamables.



Prima di ogni operazione sull'apparecchio, disinserire la tensione di rete.
Before any operation on the fixture, please disconnect the power supply.
Avant toute opération sur l'appareil déconnecter l'alimentation électrique.
Den Strom vor jeder Montage oder Instandsetzung des Geräts ausschalten.
Antes de efectuar cualquier operación sobre el aparato, desconectar la tensión de red.



In caso di danneggiamento del cavo di alimentazione, per la sostituzione contattare un rivenditore FontanaArte o personale qualificato.
In case of damage to the feeding cable, please contact a FontanaArte dealer or qualified personnel for replacement.
En cas d'endommagement du câble d'alimentation, et en vue de son remplacement, contactez votre revendeur FontanaArte ou une personne dûment habilitée.
Bei Beschädigung des elektrischen Speisekabels, bitte Kontakt mit einem FontanaArte Händler oder mit Fachpersonal aufnehmen.
Si el cable de alimentación estuviera dañado, contactar a un vendedor de FontanaArte o a personal cualificado para sustituirlo.

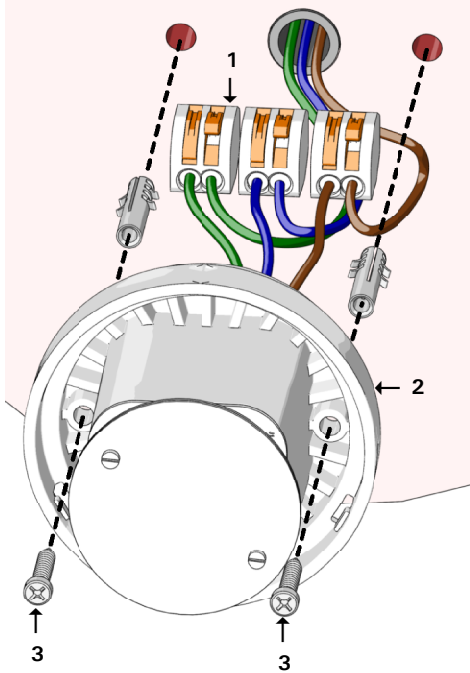
FontanaArte si riserva di apportare tutte le modifiche necessarie al miglioramento del presente prodotto in qualsiasi momento e senza preavviso.

FontanaArte reserves the right to introduce all changes required for the improvement of this product at any time and without prior notice.

FontanaArte se réserve le droit d'apporter toute modification nécessaire à l'amélioration du produit, et ce, sans préavis.

FontanaArte kann jederzeit und ohne Vorankündigung die technischen und die strukturellen Merkmale verändern, um ihre Produkte zu verbessern.

FontanaArte se reserva el derecho de efectuar las modificaciones que considera puedan mejorar este producto en cualquier momento y sin aviso previo.



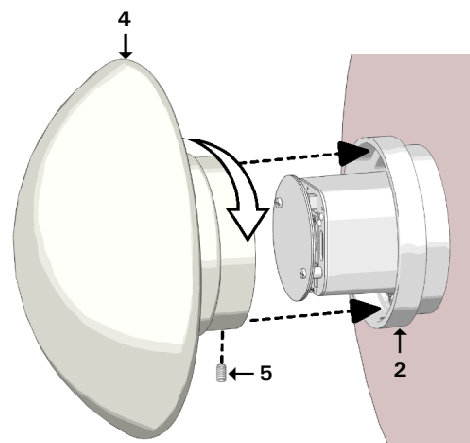
Effettuare i collegamenti elettrici agli appositi morsetti (1). Praticare i due fori laterali e fissare la base (2) al muro mediante le viti (3).

Make the electrical connections to the proper terminals (1). Drill the two side holes and fasten base (2) to the wall by means of screws (3).

Brancher aux bornes adéquates (1). Percer les deux trous latéraux et fixer la base (2) à la paroi à l'aide des vis (3).

Die Kabel an den dazu bestimmten Klemmen (1) anschliessen. Durch die beiden seitlichen Löcher durchbohren und die Basis (2) mit den Schrauben (3) an der Wand befestigen.

Efectuar las conexiones eléctricas a los bornes adecuados (1). Realizar los dos agujeros laterales y fijar la base (2) a la pared mediante los tornillos (3).



Avvitare il diffusore (4) sulla base (2) e fissarlo tramite il grano (5).

Screw diffuser (4) on base (2) and fix it by means of dowel (5).

Visser le diffuseur (4) sur la base (2) et le fixer à l'aide du goujon (5).

Den Diffusor (4) an der Basis anschrauben und mit dem Gewindestift (5) befestigen.

Atornillar el difusor (4) en la base (2) y fijarlo mediante el pasador (5).

Integrated AC LED Solution

Acrich2 – 8.7W

SMJE-XV08W1P3



Product Brief

Description

- The Acrich2 series of products are designed to be driven directly off of AC line voltage, therefore they do not need the standard converter essential for conventional general lighting products.
- The converter or driver found in most general lighting products can limit the overall life of the product, but with the Acrich2 series of products the life of the product can more closely be estimated from the LED itself. This will also allow for a much smaller form factor from an overall fixture design allowing for higher creativity in the fixture.
- The modules have a high power factor which can contribute to a higher energy savings in the end application.

Features and Benefits

- Connects directly to AC line voltage
- High Power Efficiency & Factor
- Low THD
- Long Life Time
- Simple BOM
- Miniaturization
- Lead Free Product
- RoHS Compliant

Key Applications

- Bulb Light
- Down Light
- Factory Ceiling Light
- Industrial Light

Table 1. Product Selection (CCT)

Part No.	Vin [Vac]	P [W]	Color	CCT [K]	CRI
					Min.
SMJE-2V08W1P3	120	8.7	Cool	4700 – 6000	80
SMJE-3V08W1P3	220		Neutral	3700 – 4200	
			Warm	2600 – 3200	

Table 2. Product Selection (Flux)

Part No.	Vin [Vac]	P [W]	Flux Bin	Flux [lm]	
				Min.	Typ.
SMJE-2V08W1P3	120	8.7	8a	590	650
SMJE-3V08W1P3	220		8b	740	800