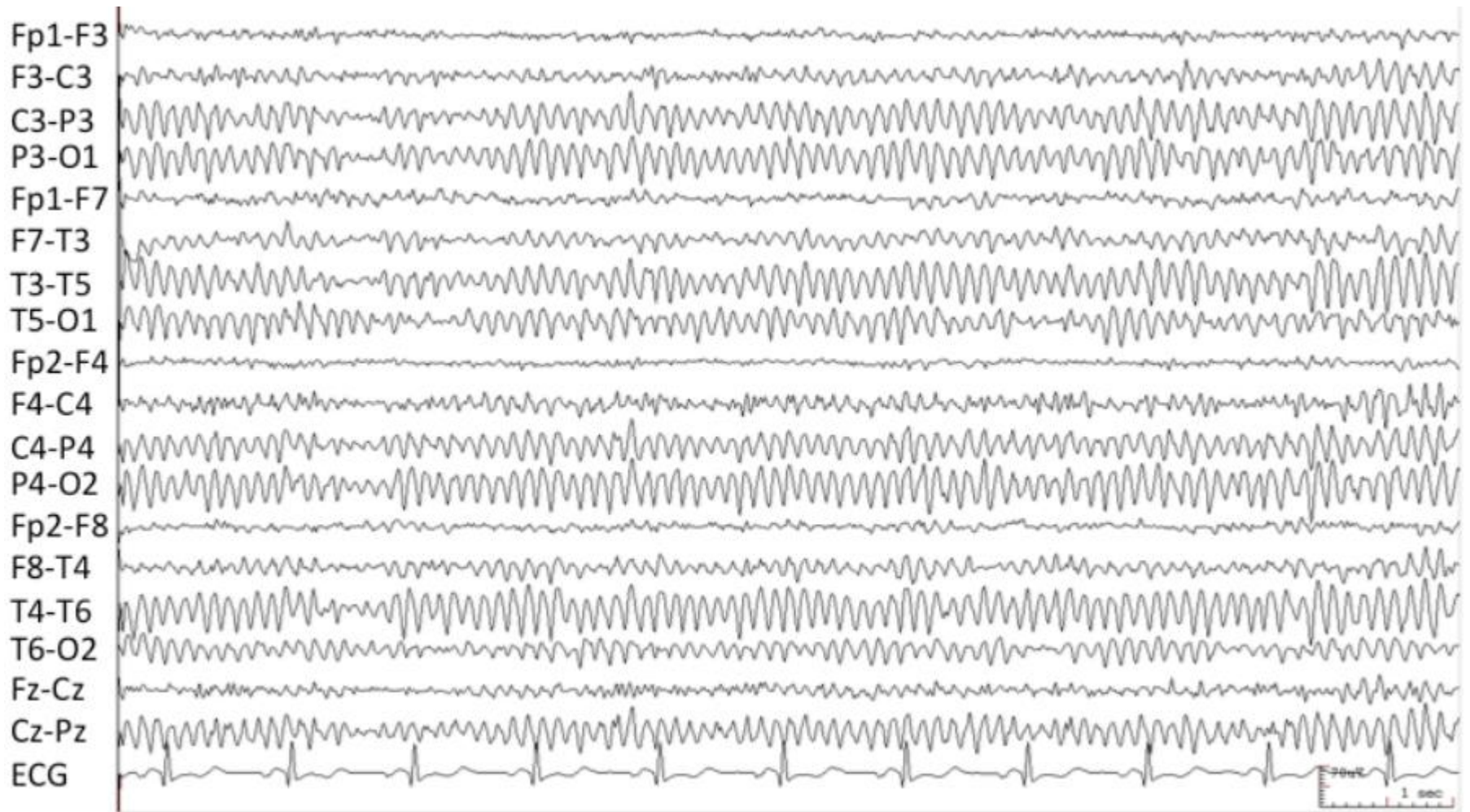
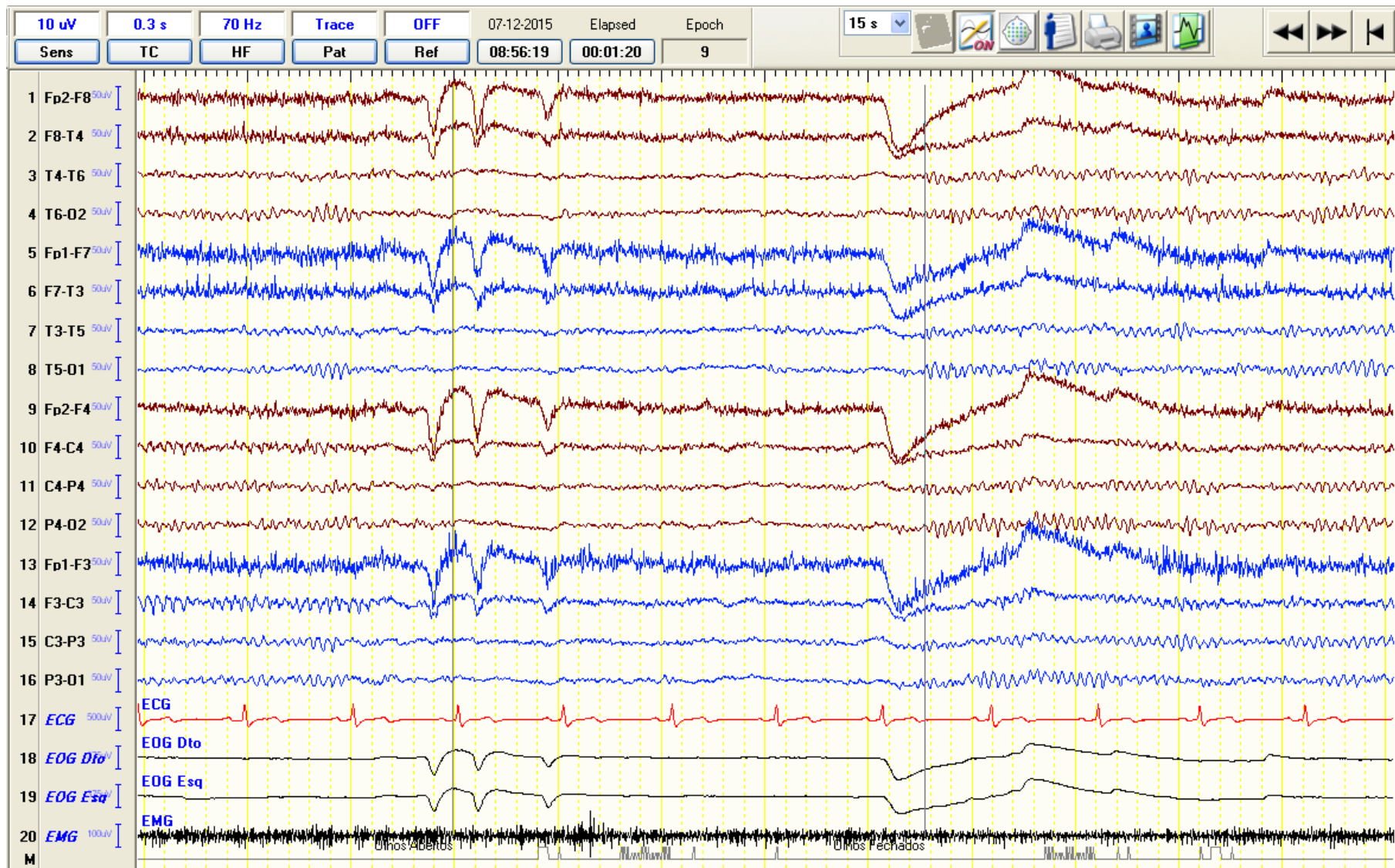


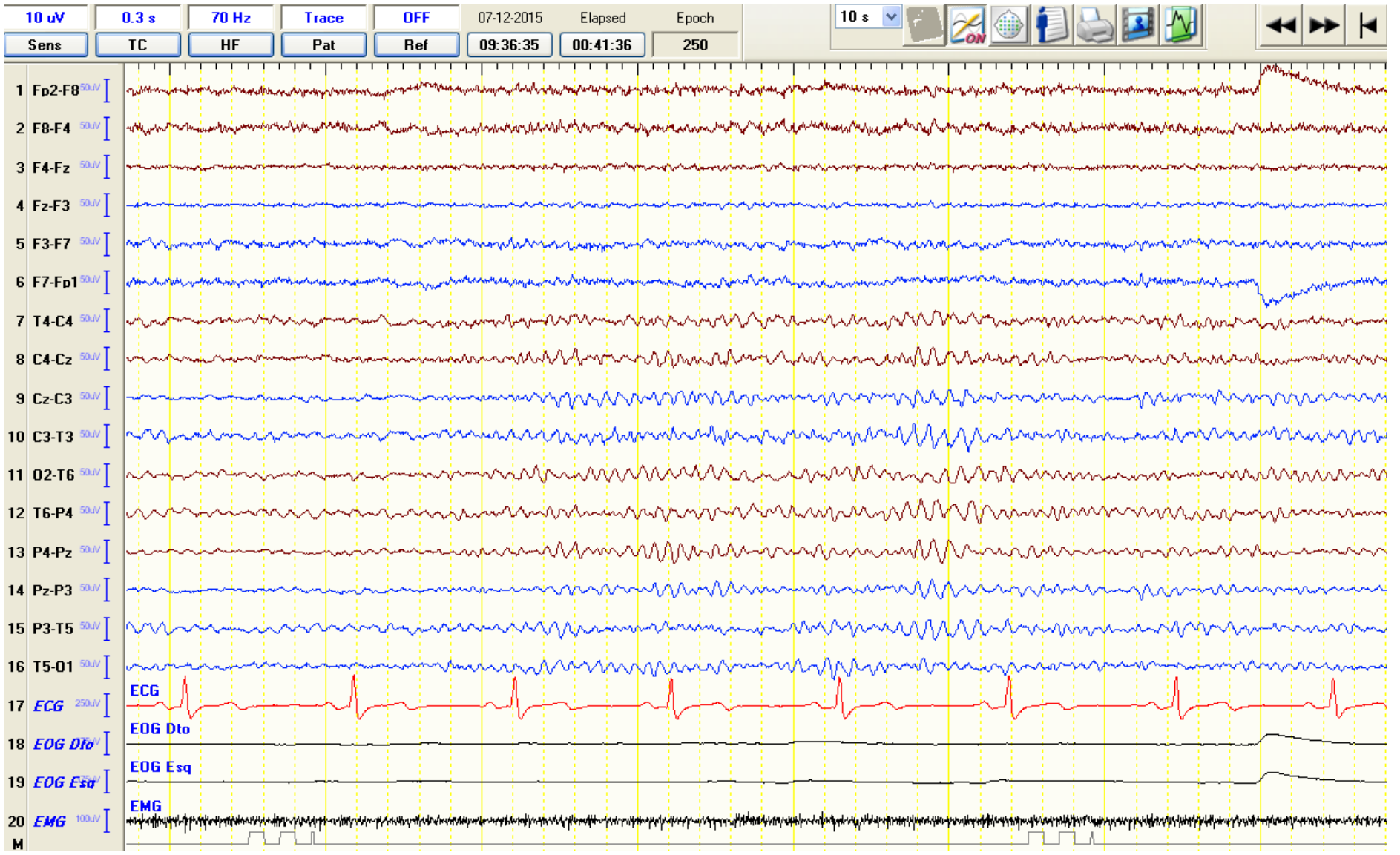
### Exercícios Práticos Fenomenologia I – EEG I (2019/2020)

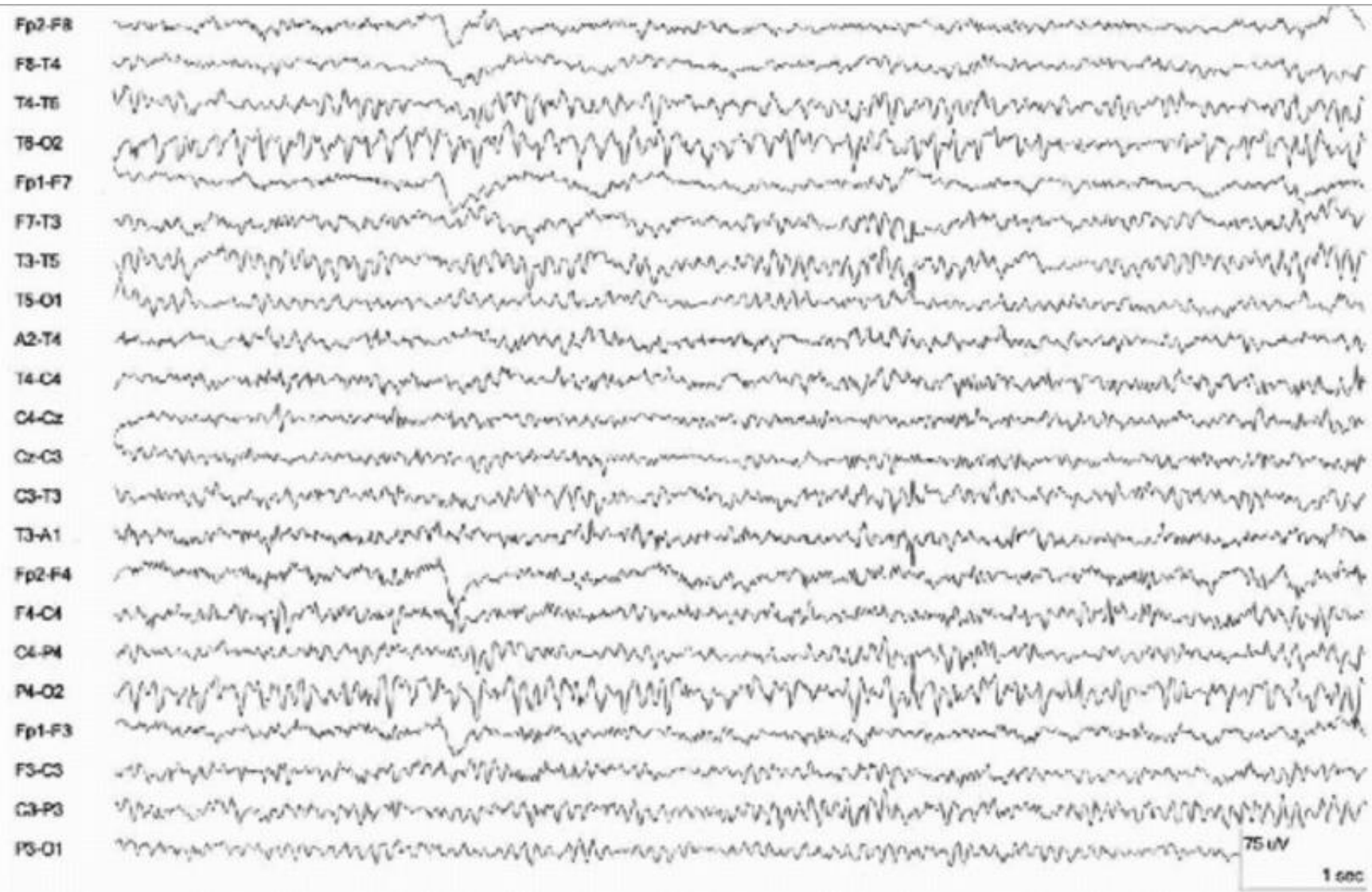
1. Caracterize a atividade electroencefalográfica presente nas seguintes amostras tendo em conta as seguintes características:
  - a. Ritmicidade
  - b. Distribuição Espacial
  - c. Surtos
  - d. Reactividade
  - e. Frequência e Prevalência
  - f. Amplitude
  - g. Padrões Espaço-Temporais
  - h. Simetria e Sincronia

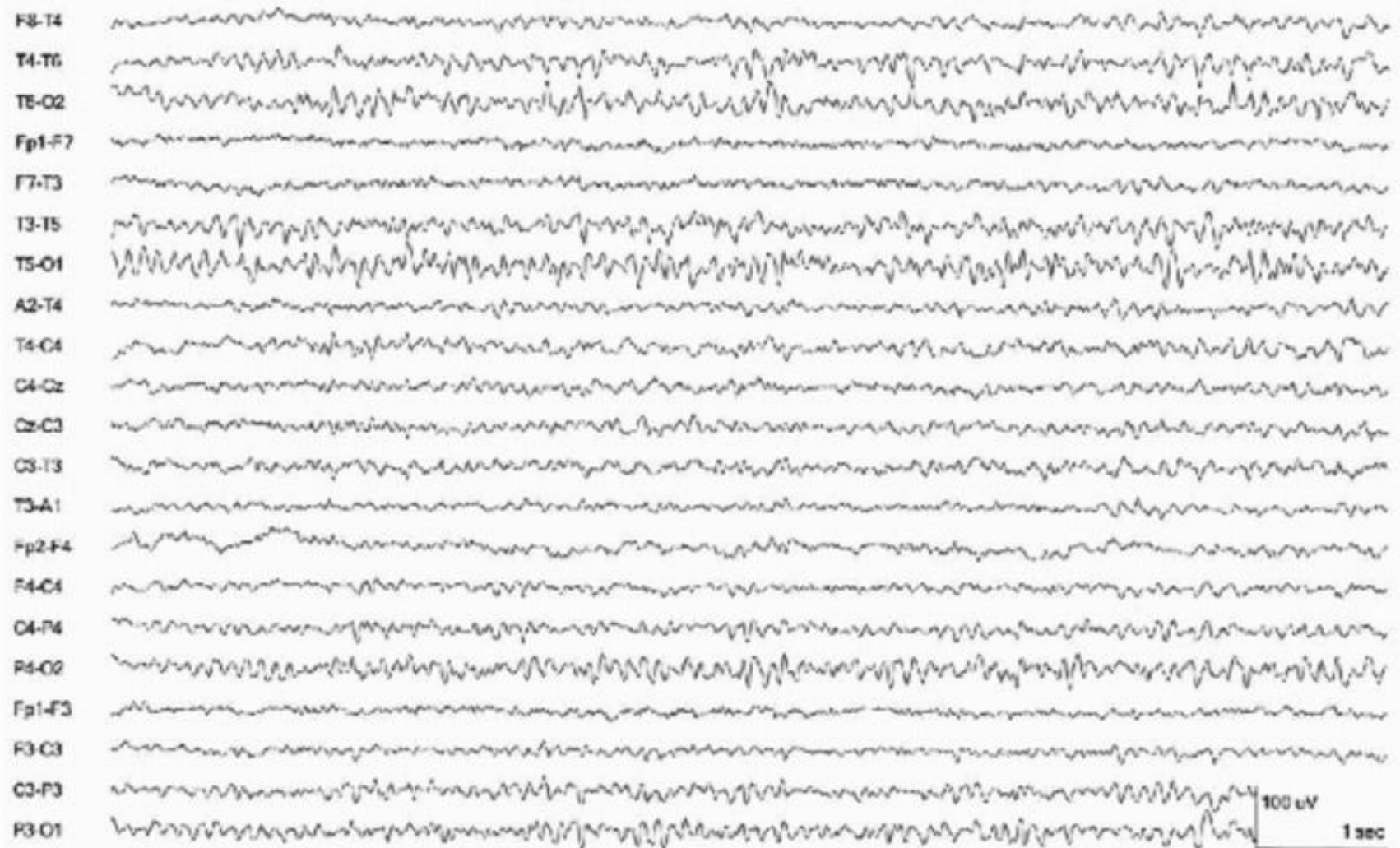
<b>Frequência</b>	<b>Prevalência</b>	<b>Amplitude</b>	<b>Morfologia</b>
Delta: <3.9 Hz Teta: 4-7.9 Hz Alfa: 8-12.9 Hz Beta: >13 Hz	Abundante:>90% Moderada: 50-90% Pouco Abundante: 10-50% Escassa: 1-10% Pouco Evidente: <1%	Baixa: <20 $\mu$ V Média: 20-50 $\mu$ V Alta: >50 $\mu$ V  Atenuação: <20 $\mu$ V Supressão: <10 $\mu$ V	Regular/ Irregular

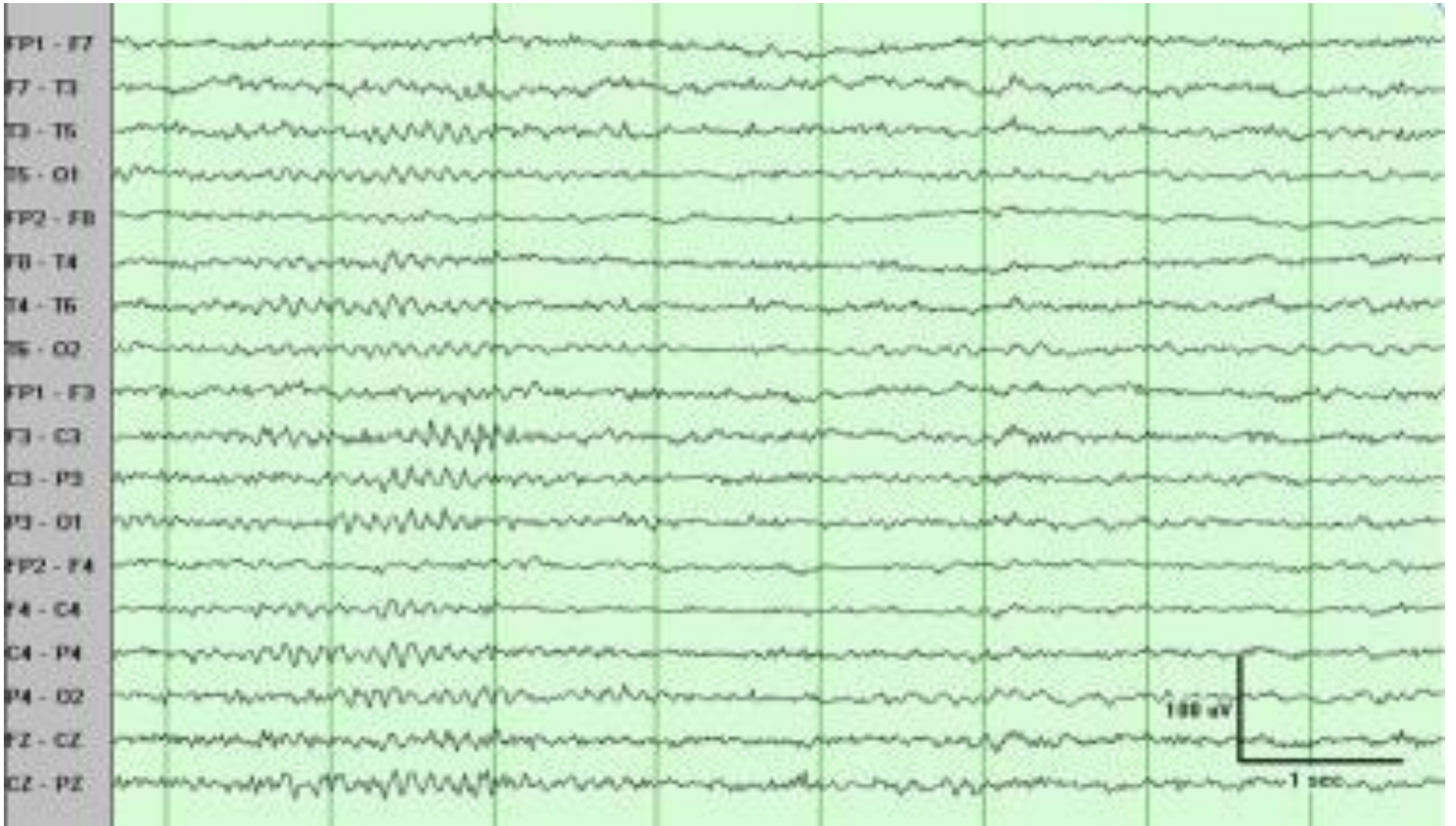


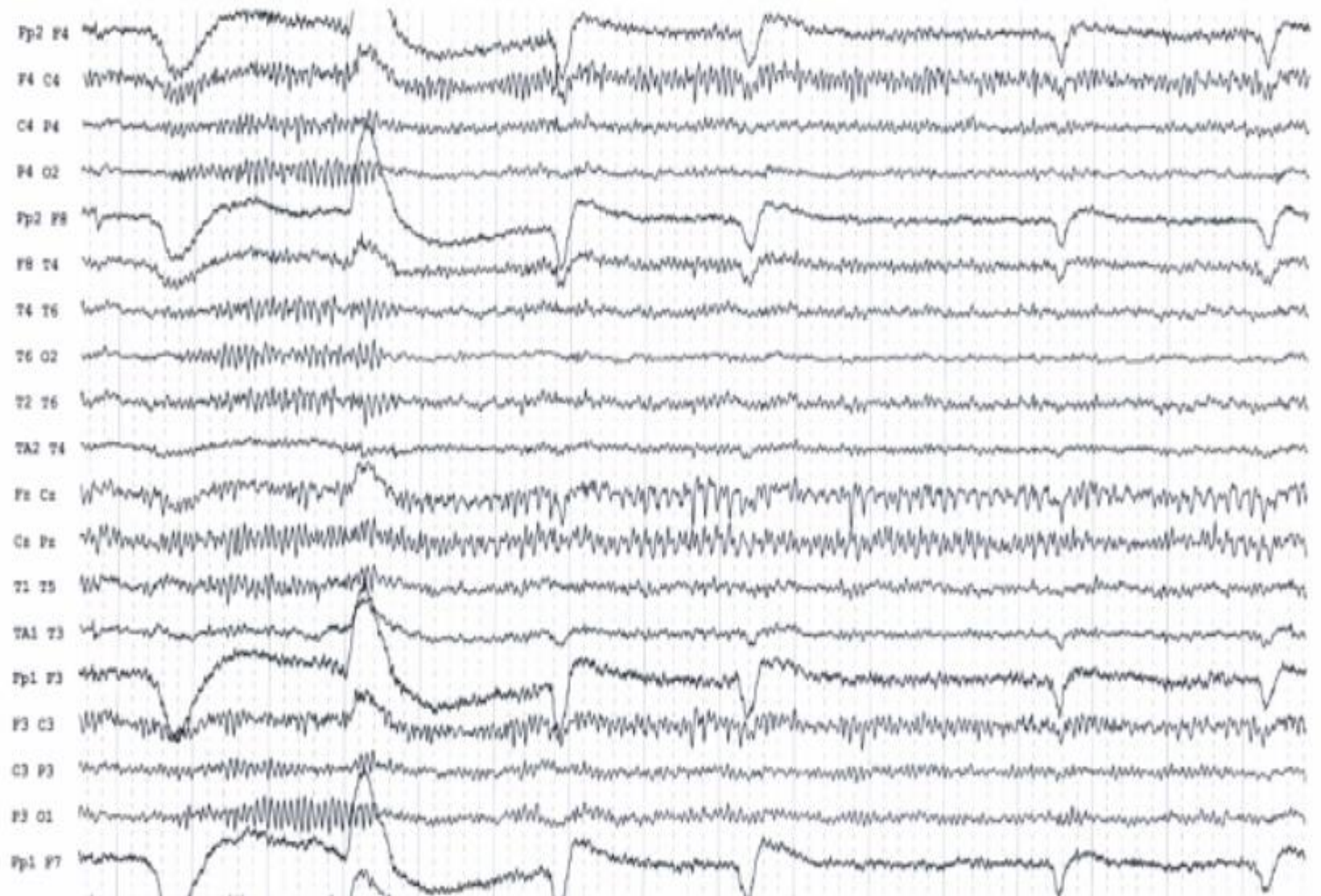


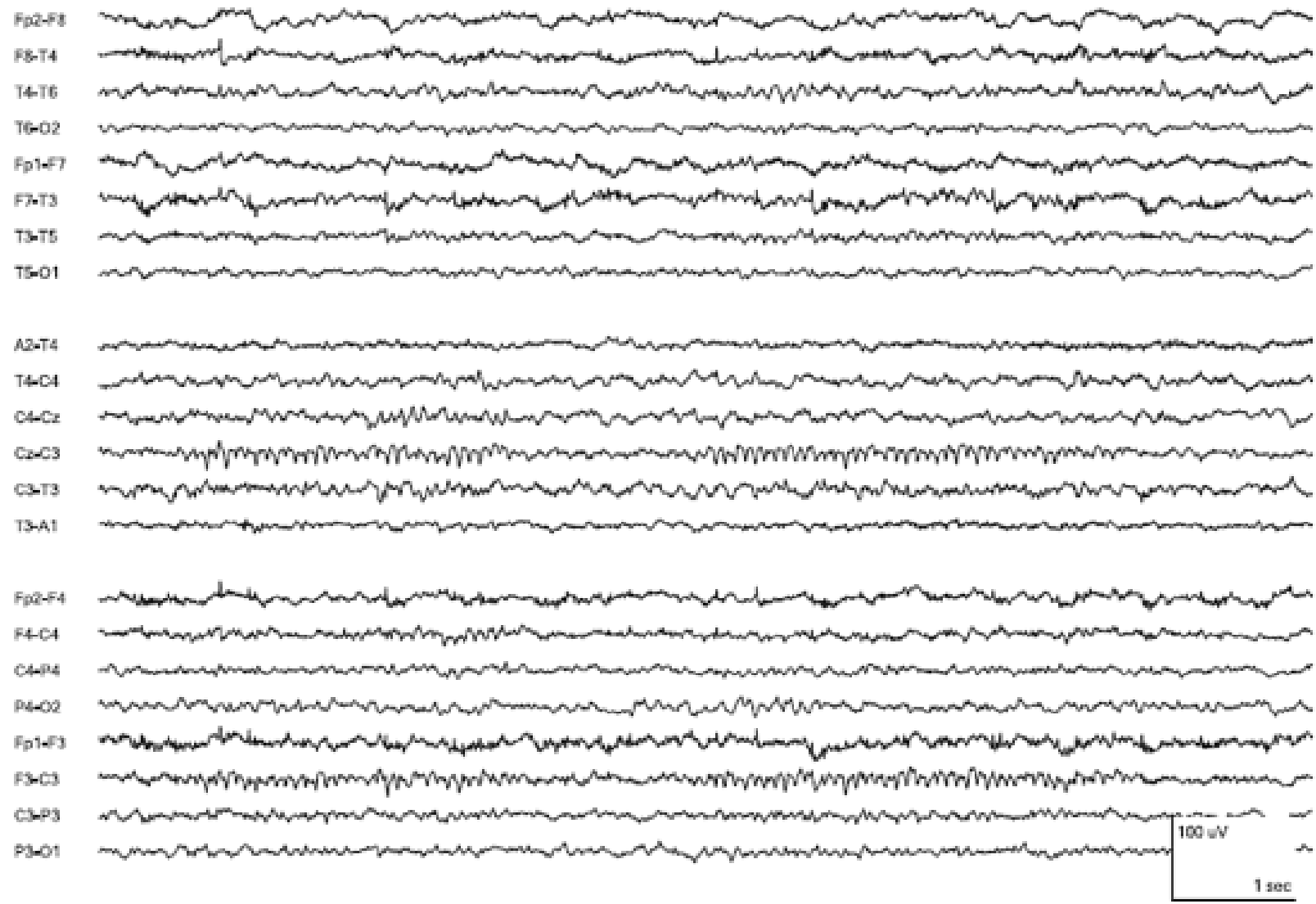


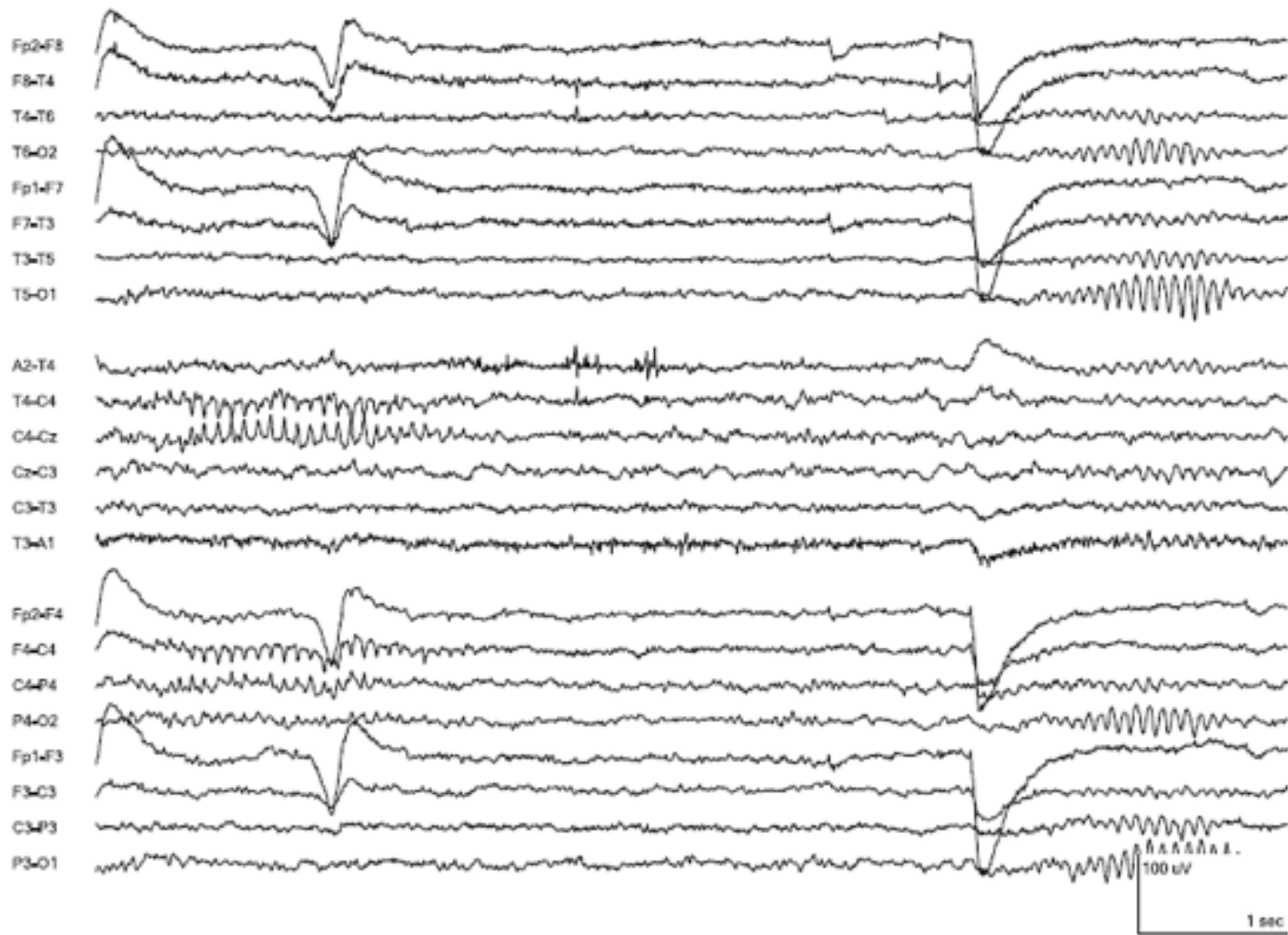


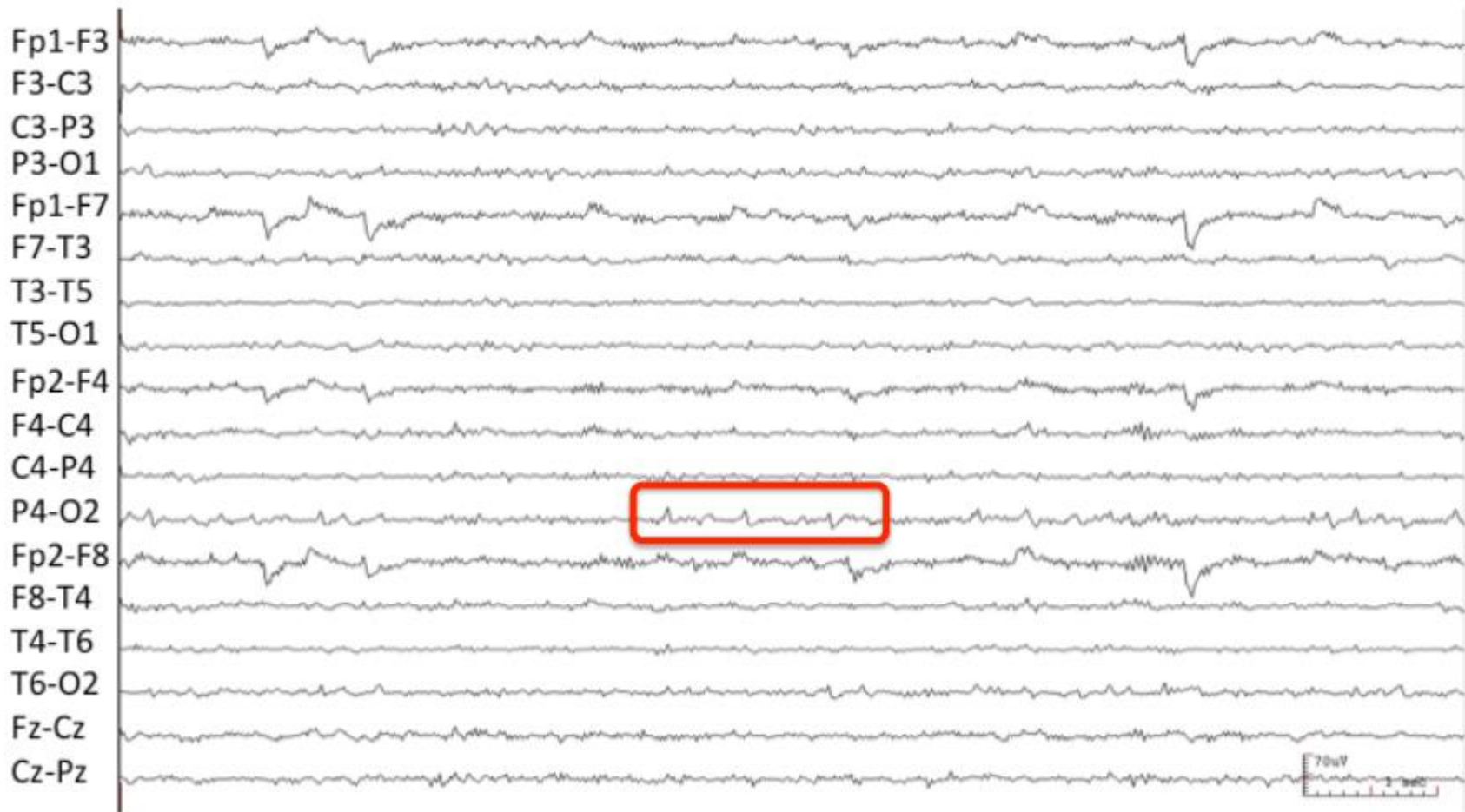


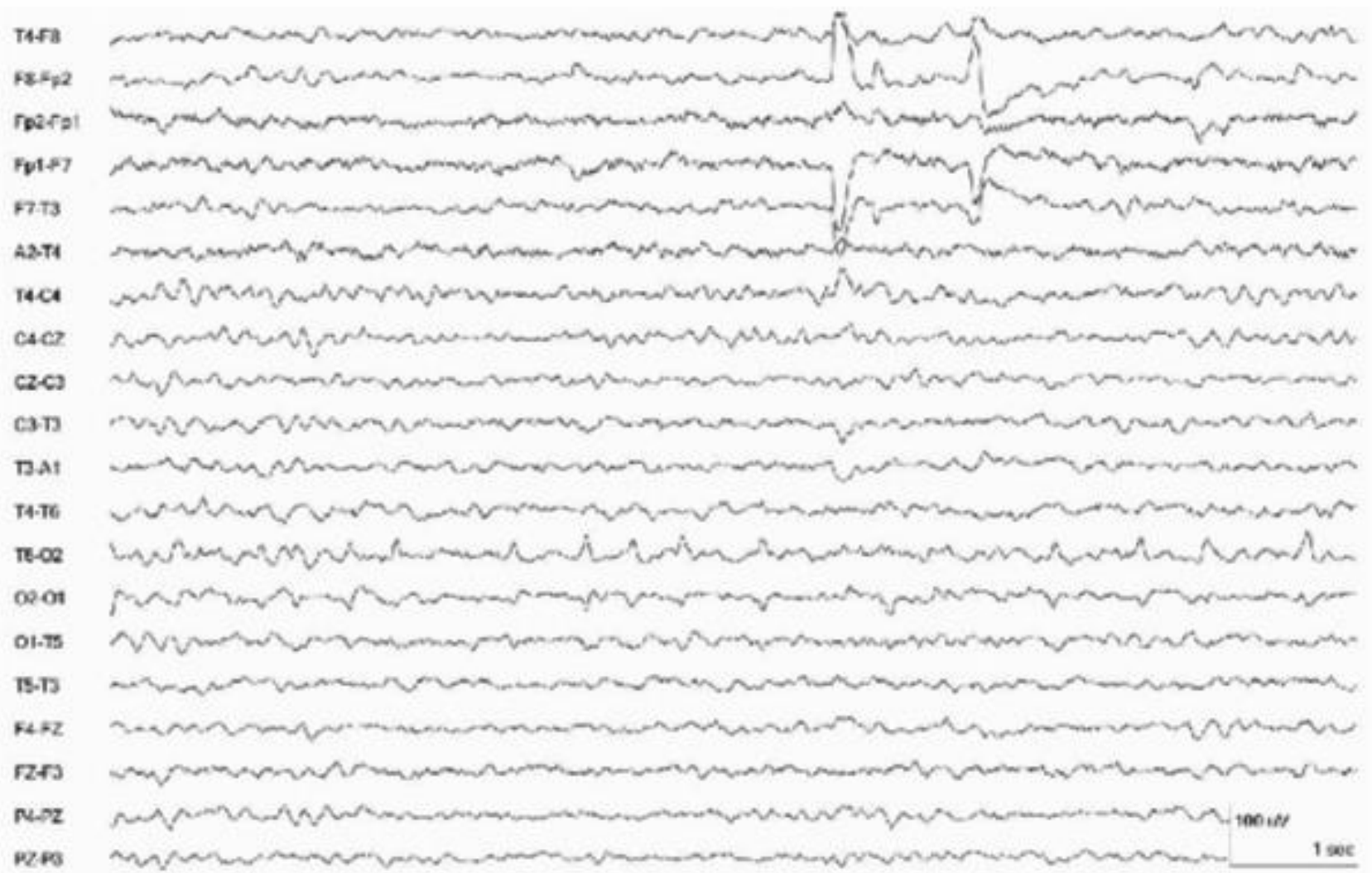


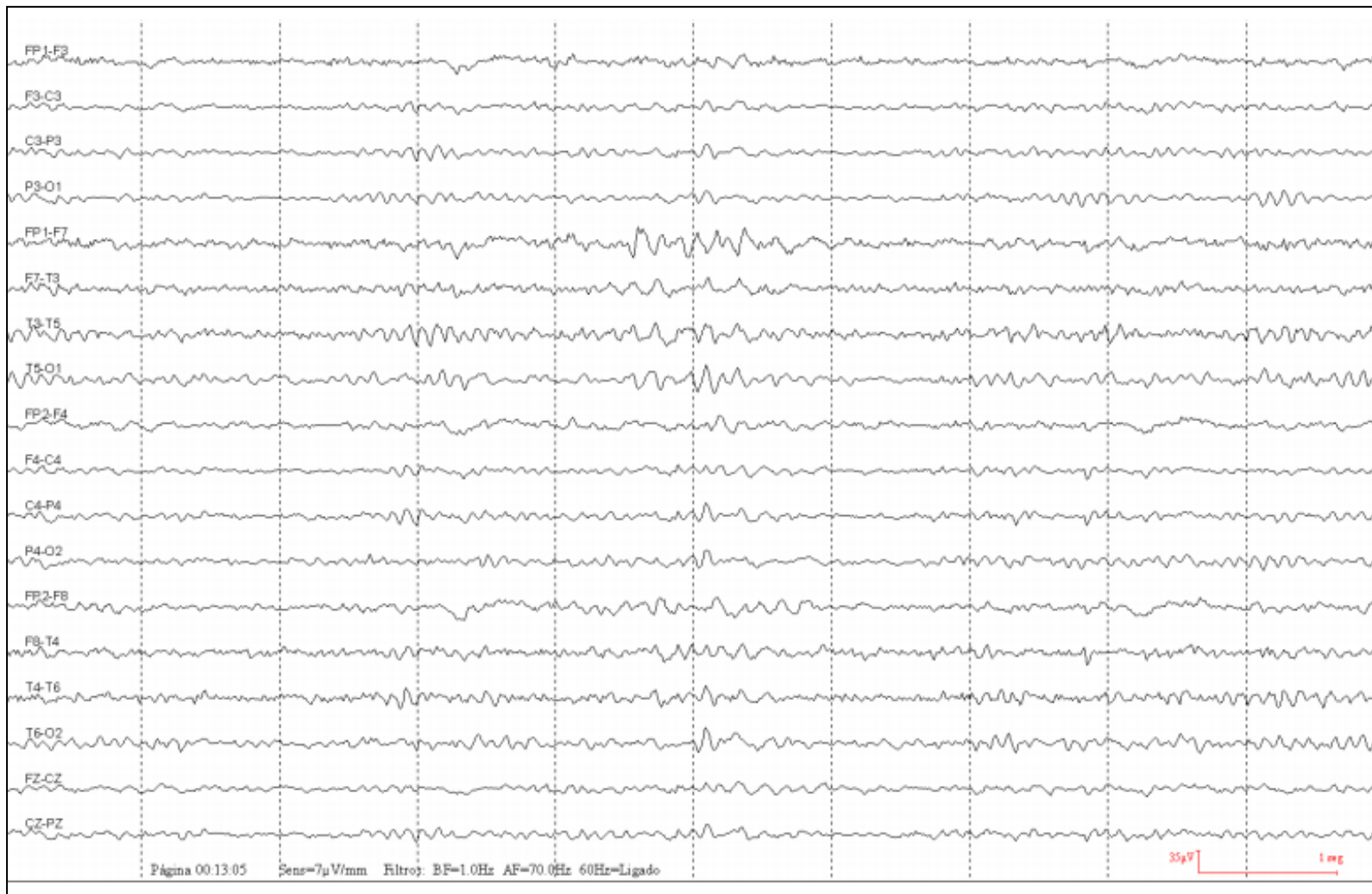


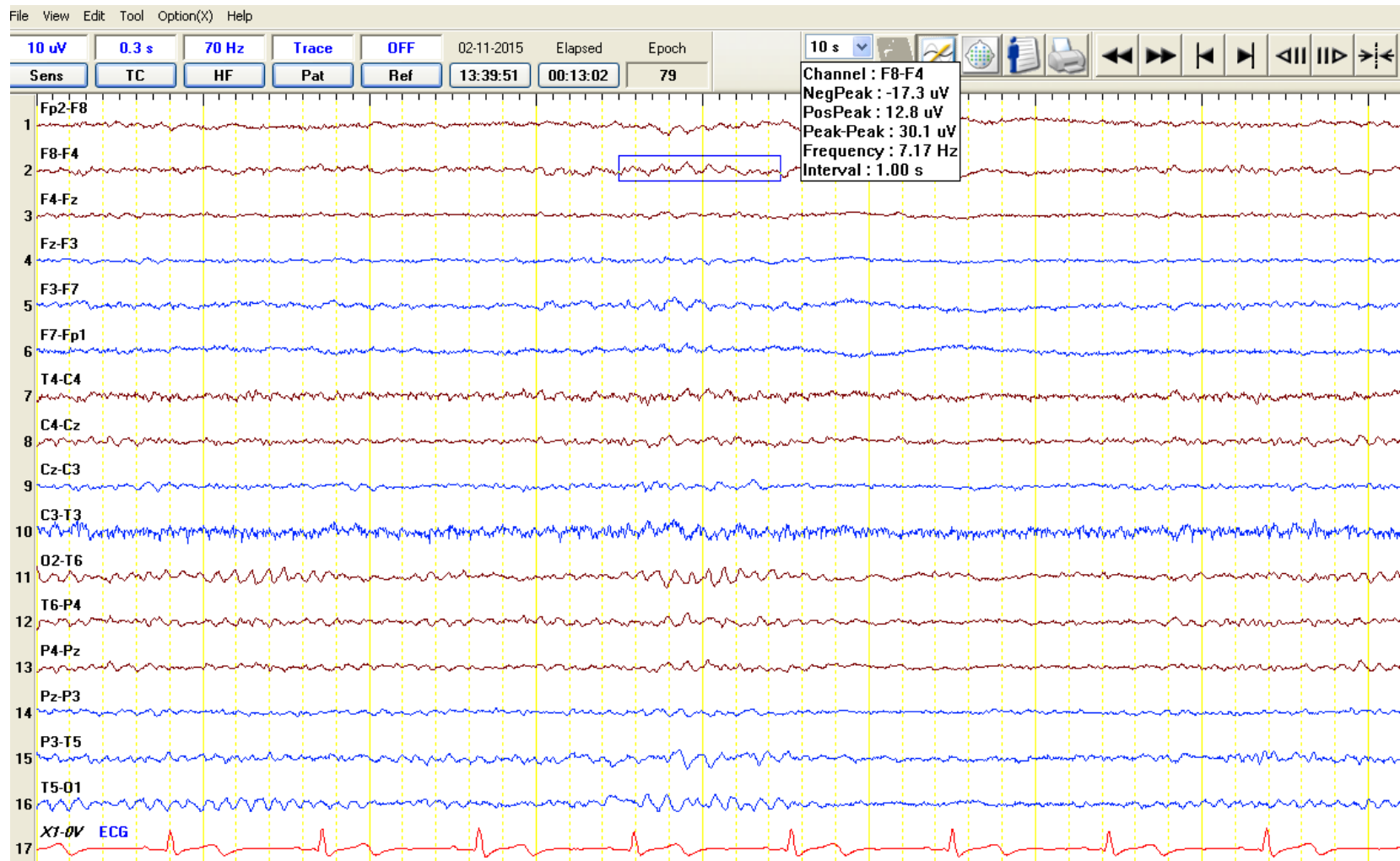


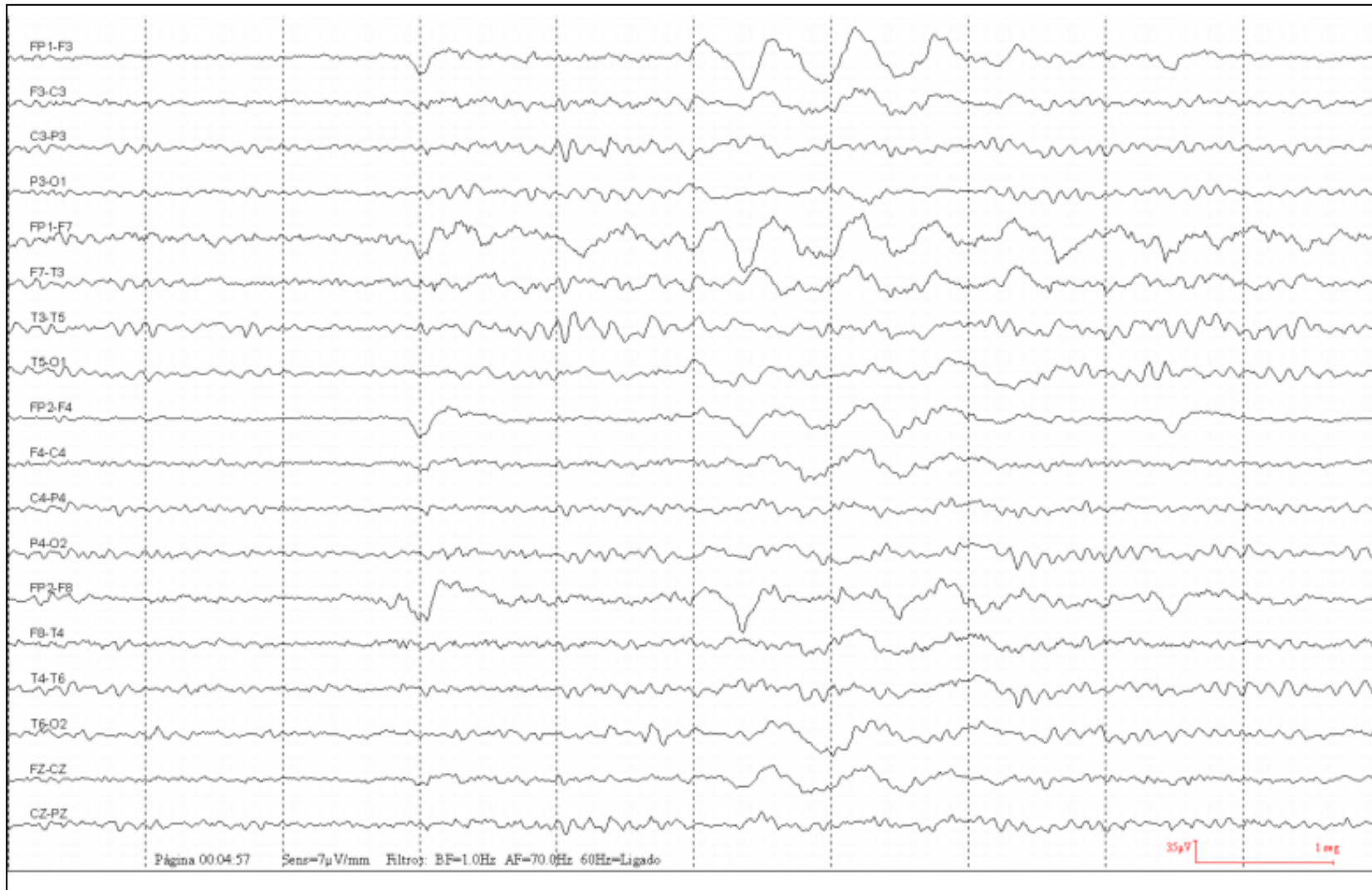














BETA

