



Job Title

PAREDES DAS BAIAS - SECCAO C

**General**

Design code: Eurocode 2  
Analysis: Failure surface

**Loads: N, Mx**

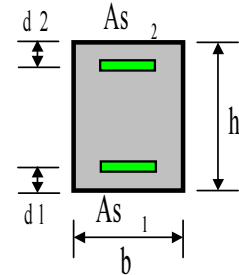
N<0 is compression !

**Section**

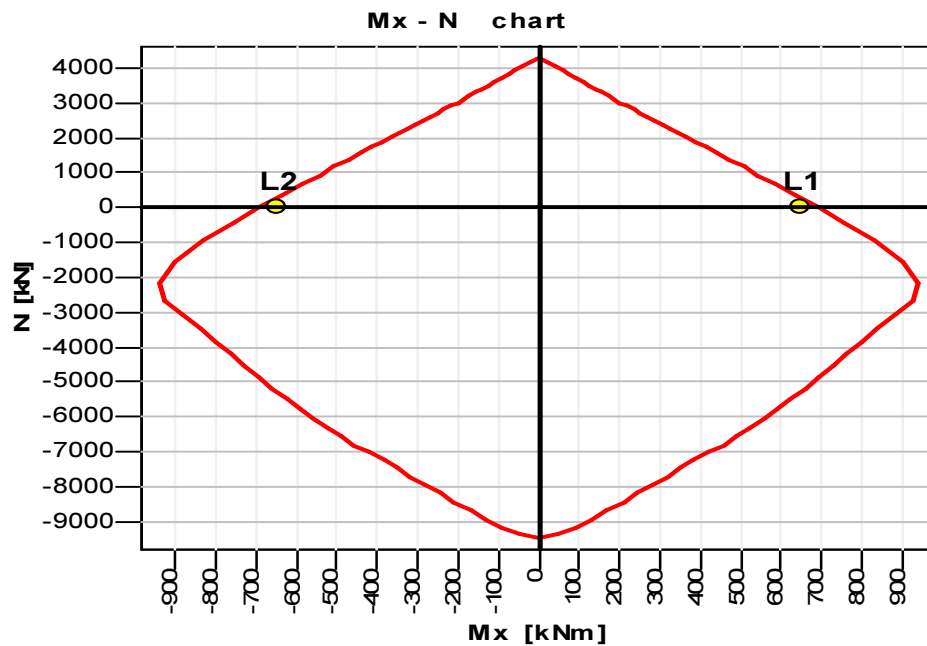
Data [cm]

b =100  
h =40

d1 =4  
d2 =4



**Results**



**Materials**

Concrete: C25/30  
SSR: Parabolic - linear

Reinforcing steel: S500  
SSR: Standard

fck = 25.00 MPa  
Ec = 30471.58 MPa  
ec2u = -3.500 o/oo  
ec2 = -2.000 o/oo  
n = 2.00

fyk = 500.00 MPa  
Es = 200000.00 MPa  
esu = 10.000 o/oo



**Factors**

Concrete:  $\gamma_c = 1.50$   
Steel:  $\gamma_s = 1.15$

**Reinforcement**

Unsymmetric:

$A_{s1} = 49.09 \text{ cm}^2$       $A_{s2} = 49.09 \text{ cm}^2$

**Solve data**

II order moments: No

**Section properties**

Reinforcement :

$A_{s,tot} = 98.18 \text{ cm}^2$

Concrete section:

$A_c = 4000.00 \text{ cm}^2$

$I_{c,x} = 533333.33 \text{ cm}^4$

R/C section:

$A_{red} = 4546.22 \text{ cm}^2$

$I_{red,x} = 673166.63 \text{ cm}^4$

$r_x = 12.17 \text{ cm}$