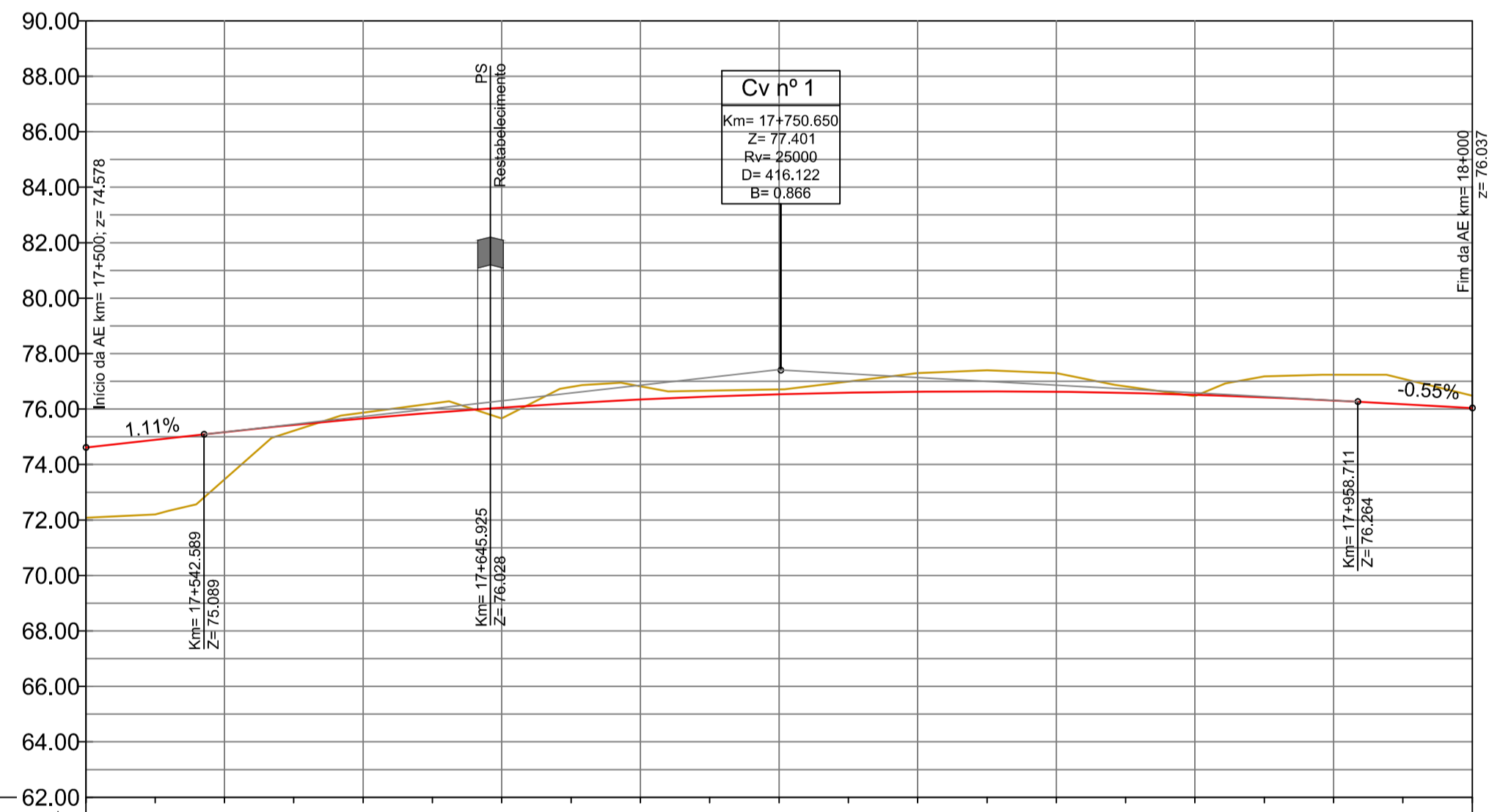
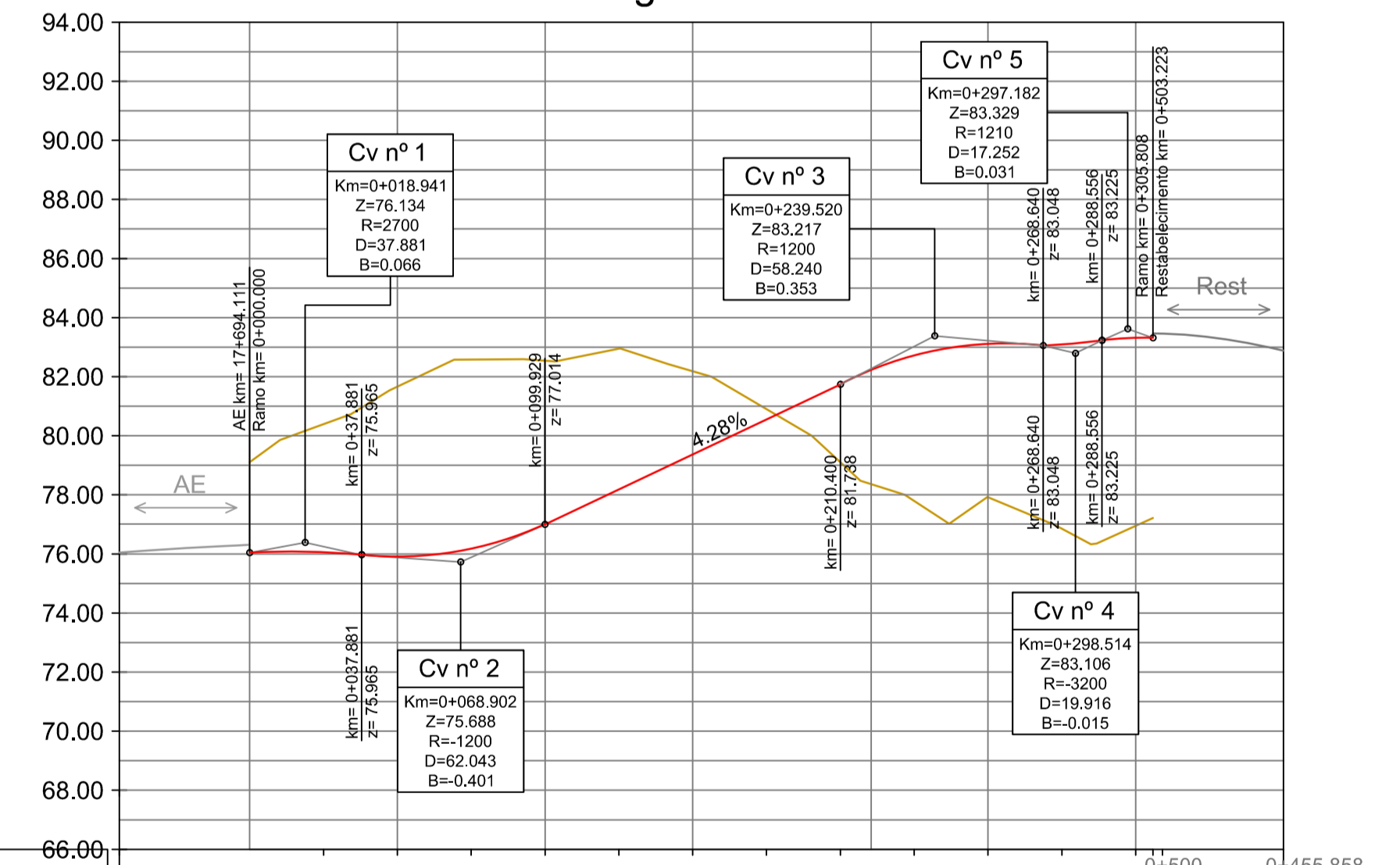


Perfil Longitudinal da Autoestrada

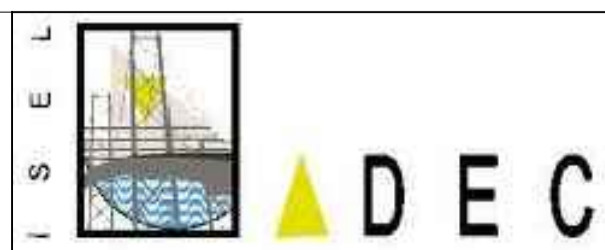


QUILOMETRAGEM	17+500	17+550	17+600	17+650	17+700	17+750	17+800	17+850	17+900	17+950	18+000	
COTAS DA RASANTE	74.576	74.881	75.171	75.429	75.663	75.871	76.054	76.216	76.349	76.457	76.541	
COTAS DO TERRENO	72.080	72.204	72.357	72.517	72.687	72.857	73.027	73.197	73.367	73.537	73.707	
ELEMENTOS DA RASANTE	i = 1.111% L = 42.589										i = -0.550% L = 41.289	
ELEMENTOS DA DIRECTRIZ	R = -5000 L = 500.000										R = 25000 D = 416.122	
SOBREELEVAÇÃO	-2.5%										-2.5%	
KM PONTOS NOTÁVEIS	17+500.000	17+542.589									17+958.111	18+000.000

Perfil Longitudinal do Ramo

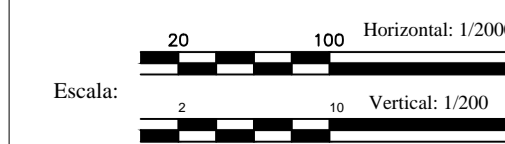


QUILOMETRAGEM	17+650	17+700	17+750	17+800	17+850	17+900	17+950	18+000	18+050	18+100	18+150	18+200	18+250	18+300	18+350	18+400	18+455.858	
COTAS DA RASANTE	76.125	76.038	75.951	75.864	75.777	75.690	75.603	75.516	75.429	75.342	75.255	75.168	75.081	74.994	74.907	74.820	74.733	
COTAS DO TERRENO	76.105	76.038	75.971	75.904	75.837	75.770	75.703	75.636	75.569	75.502	75.435	75.368	75.301	75.234	75.167	75.100	75.033	
ELEMENTOS DA RASANTE	R=25000 D=44.111		R=2700 D=37.881		R=1200 D=62.043		i = 4.28% L = 110.477				R=1200 D=58.240		R=3200 D=19.916		R=1210 D=44.142		R=2000 D=44.142	
ELEMENTOS DA DIRECTRIZ	R = -5000 L = 44.111		A = 55 L = 55.000		R = 55 L = 195.808				A = 55 L = 55.000		R = 1200 D = 58.240		A = 55 L = 55.000		R = 1210 D = 44.142		R = 2000 D = 44.142	
SOBREELEVAÇÃO	-2.5%		-2.5%		+7%				+7%		-2.5%		-2.5%		-2.5%		-2.5%	
KM PONTOS NOTÁVEIS	17+650.000	17+750.650	17+842.111	17+934.650	18+027.182	18+119.681	18+212.225	18+304.769	18+397.313	18+490.857	18+583.401	18+675.945	18+768.489	18+861.033	18+953.577	19+046.121	19+138.665	19+231.209



Estudo da divergência entre duas vias que curvam em sentidos contrários

Trabalho Final de Mestrado elaborado por:
29559 - Hugo Lavaredas



Designação :
PLANTA E PERFIL LONGITUDINAL DA
AUTOESTRADA E DO RAMO (SOLUÇÃO R=5000)