



XIII Reunião de Citologia

Apresentação do Caso 4

Rodrigo Ferreira de Carvalho¹, Andreia Livro² e Paula Mendonça³

¹ ESTeSL, IPL, ² Hospital CUF Descobertas, ³ H&TRC - Health and Technology Research Center, ESTeSL, IPL



HISTÓRIA CLÍNICA



Mulher



38 anos



Sem hábitos tabágicos



Submetida a 2 cesarianas



Vacinada contra HPV



Histeroscopia

Espessamento e pólipo
endometrial

Realização de nova citologia

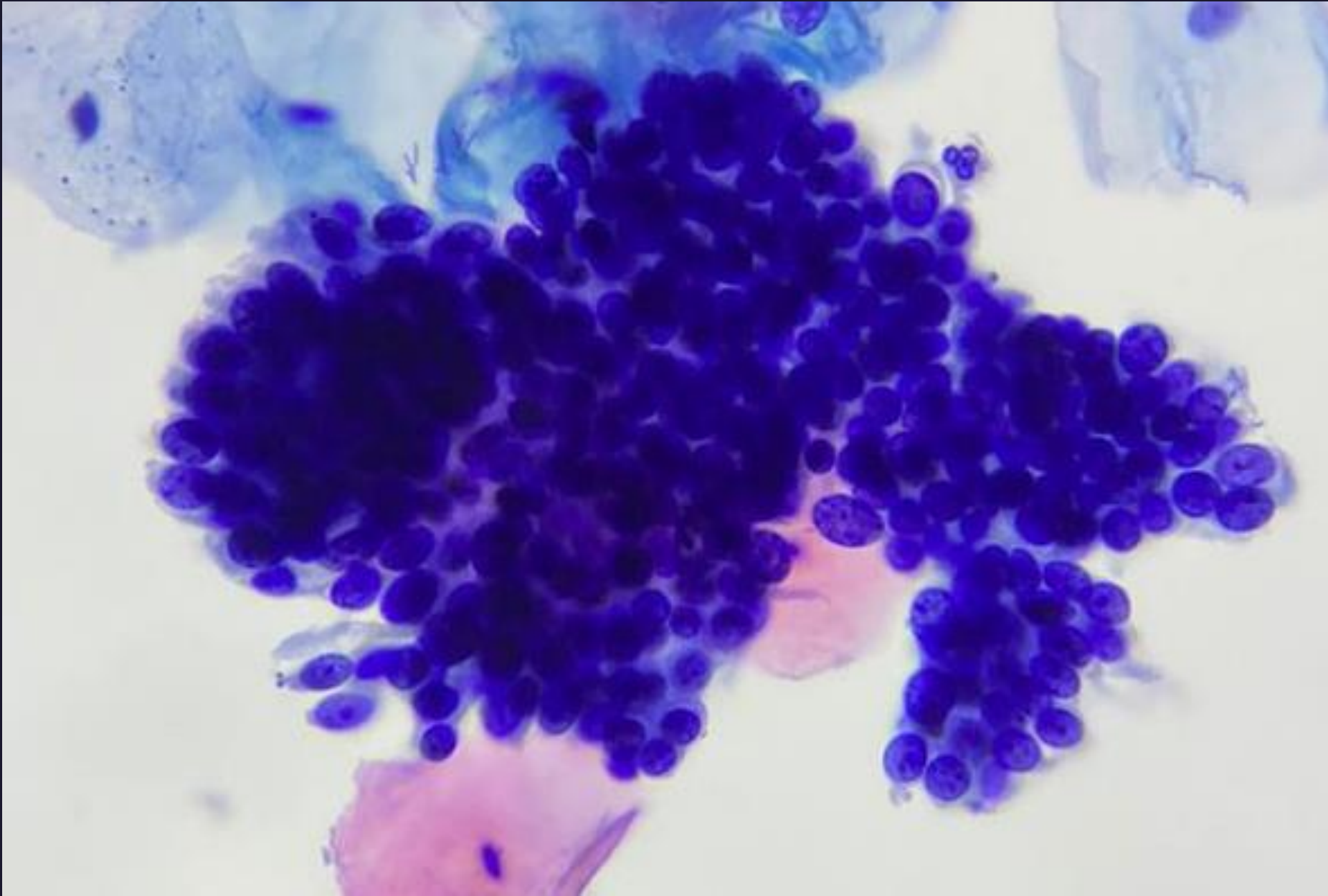


Figura 1: Papanicolau (x40)

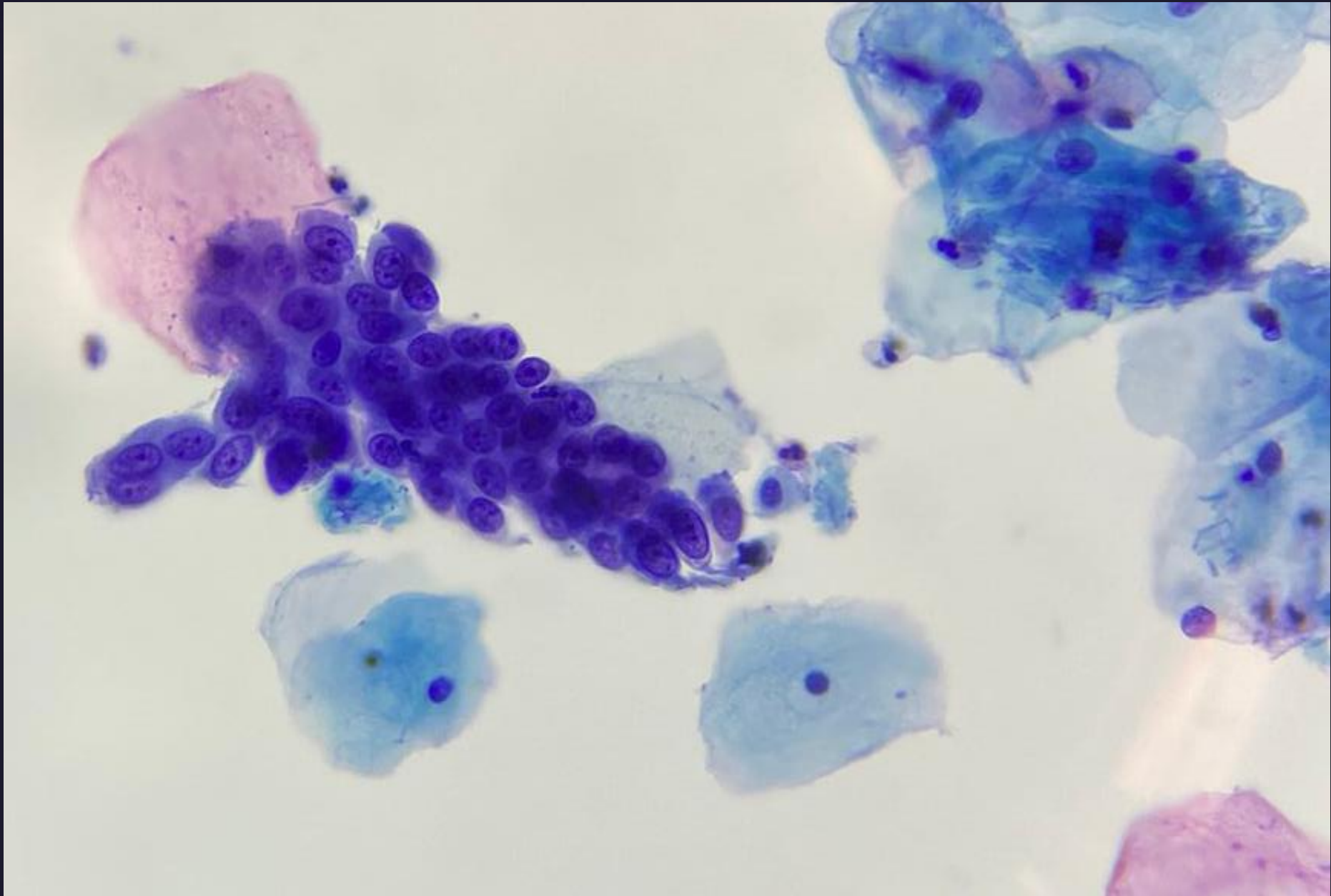


Figura 2: Papanicolau (x40)

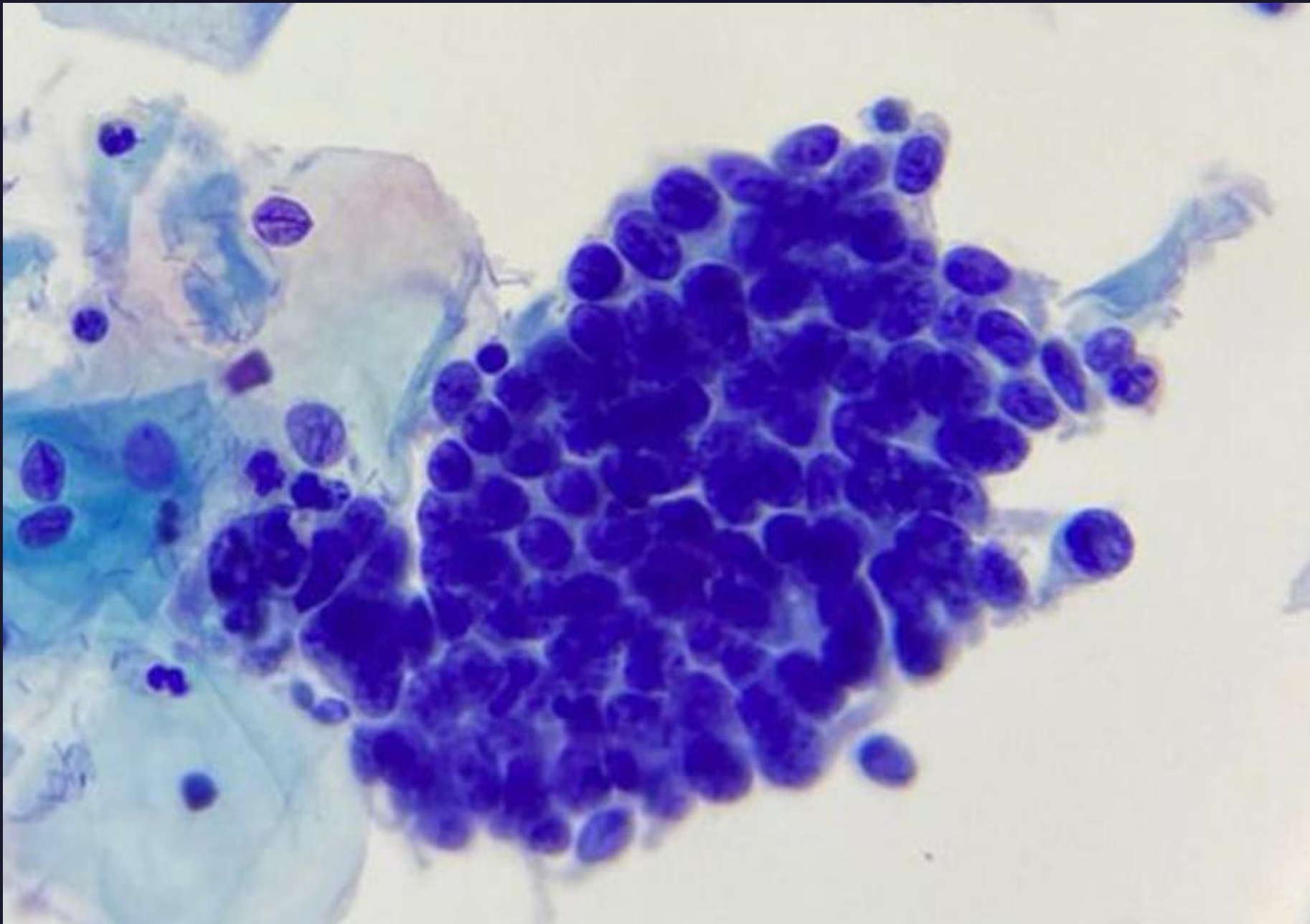


Figura 3: Papanicolau (x40)

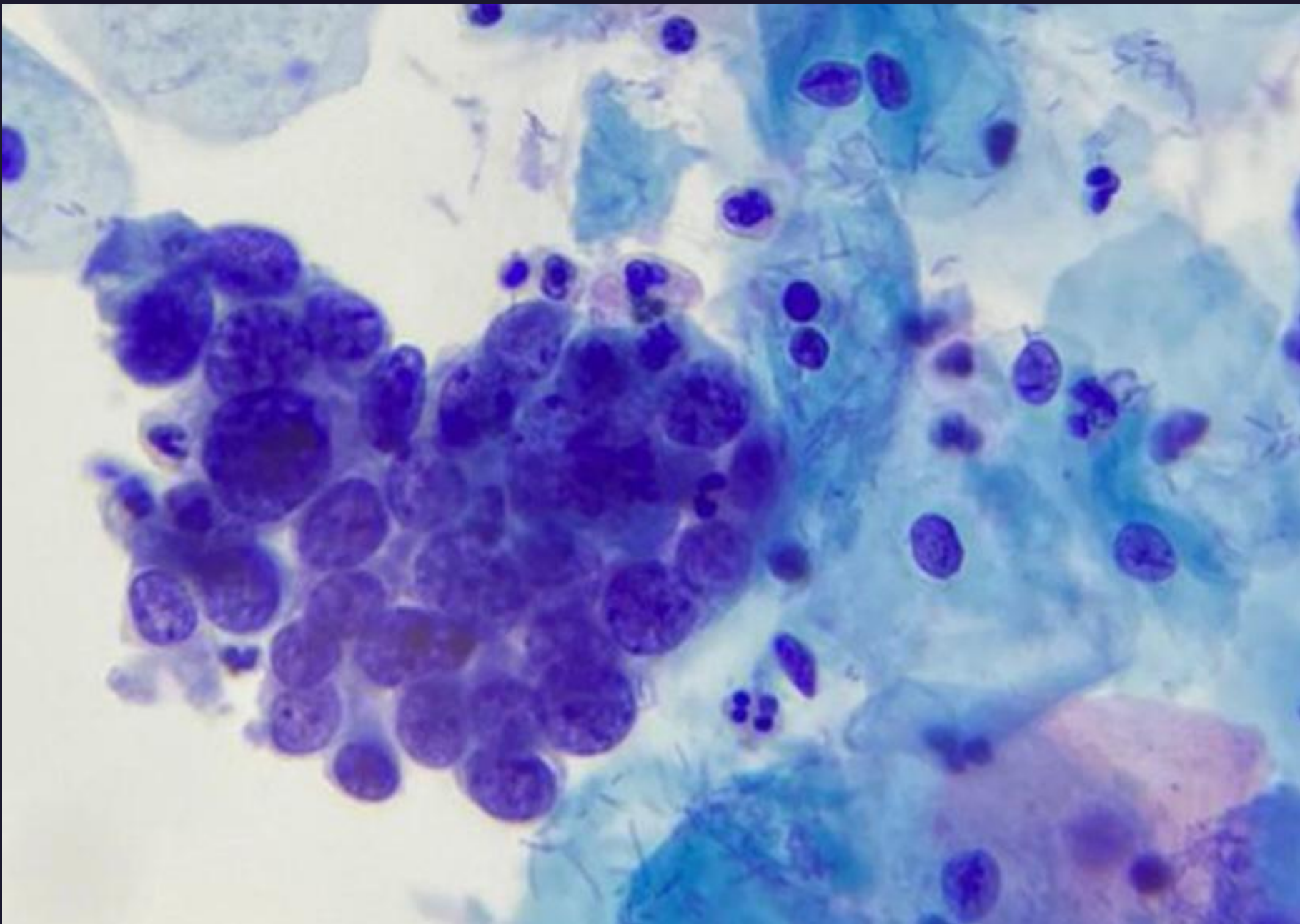


Figura 4: Papanicolau (x40)

VOTAÇÃO

OPÇÕES DE RESULTADOS CITOLÓGICOS



ACHADOS CITOLÓGICOS E DIAGNÓSTICO DIFERENCIAL DE AGC, ENDOCERVICAIS (SOE)

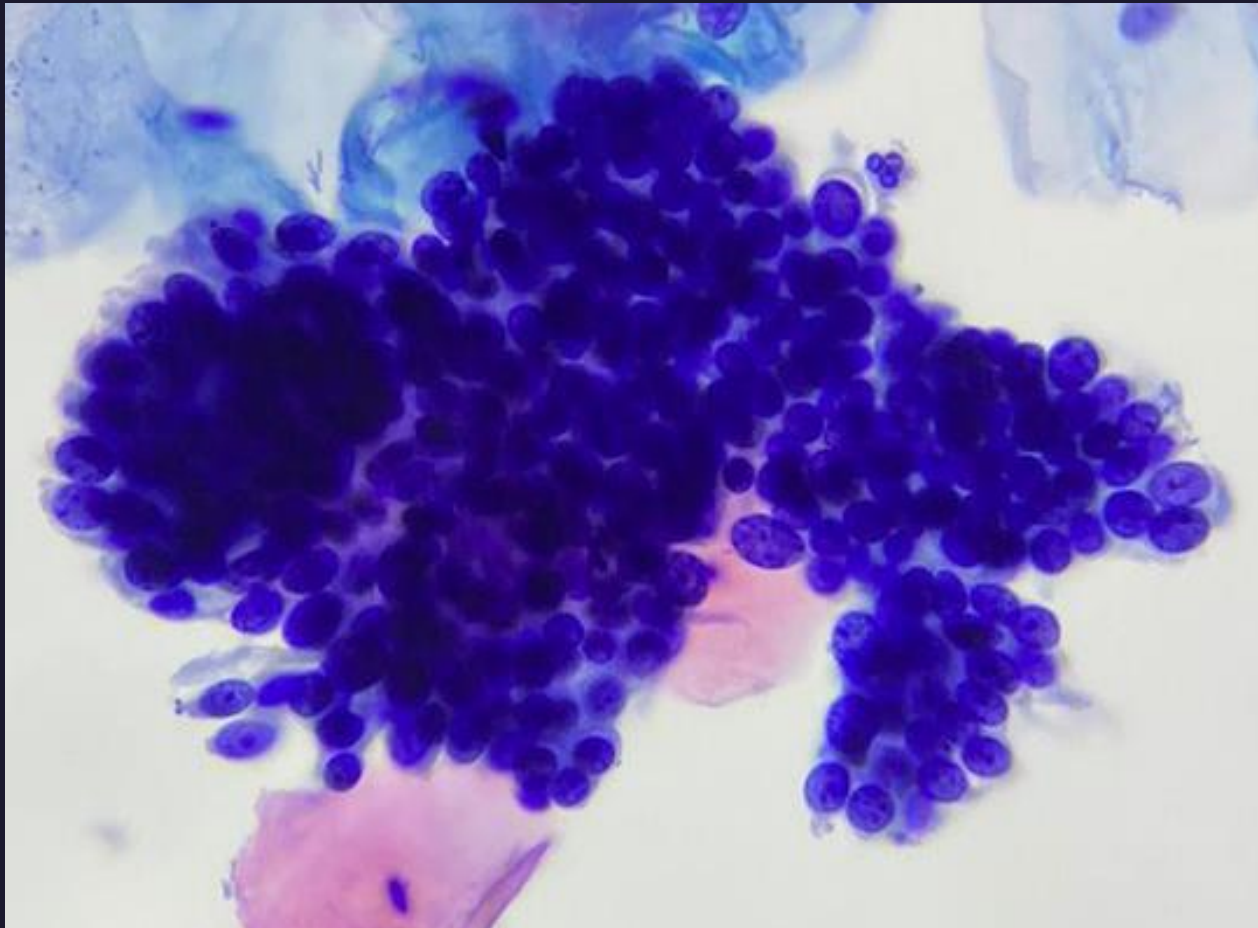


Figura 5: Papanicolau (x40)

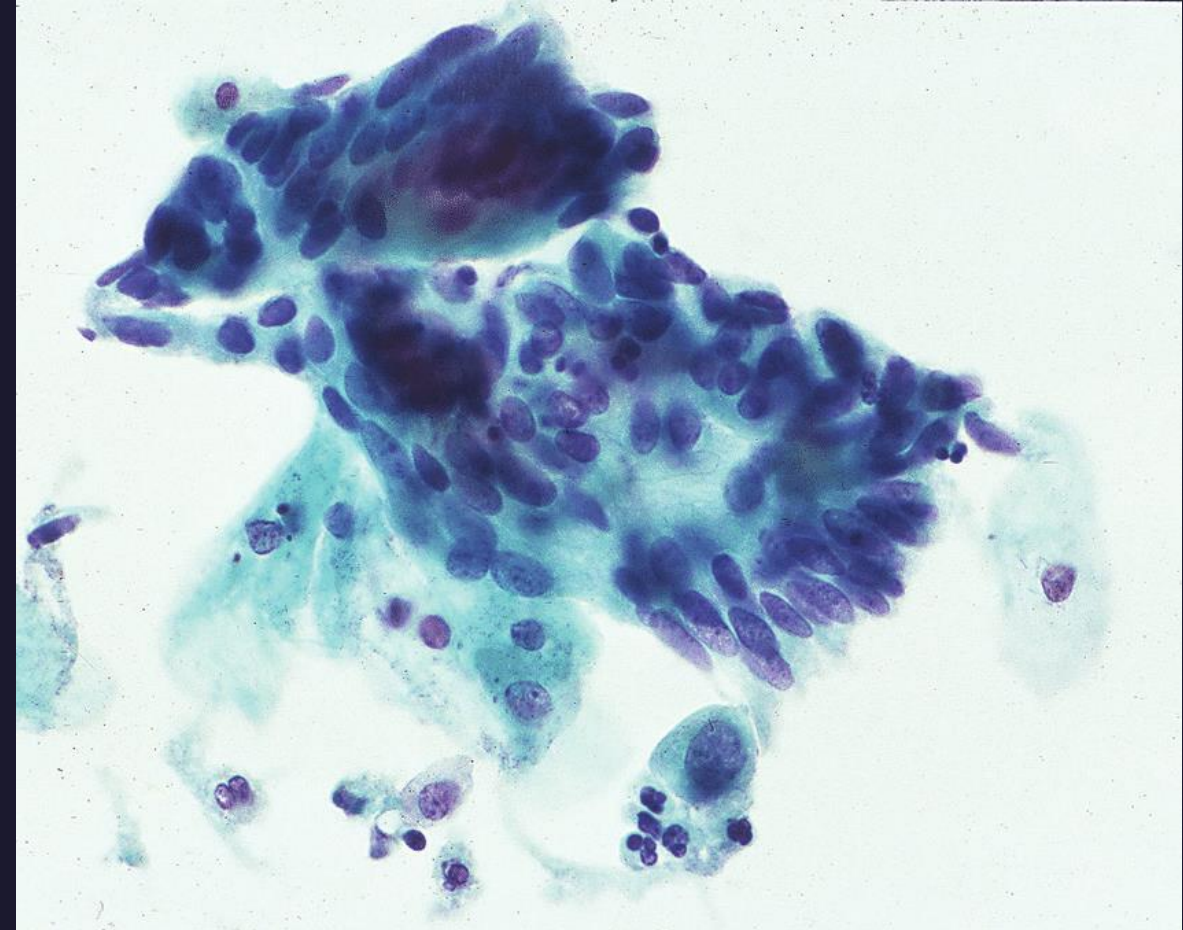


Figura 6: Papanicolau (x40)

ACHADOS CITOLÓGICOS E DIAGNÓSTICO DIFERENCIAL DE AGC, a favor de neoplasia

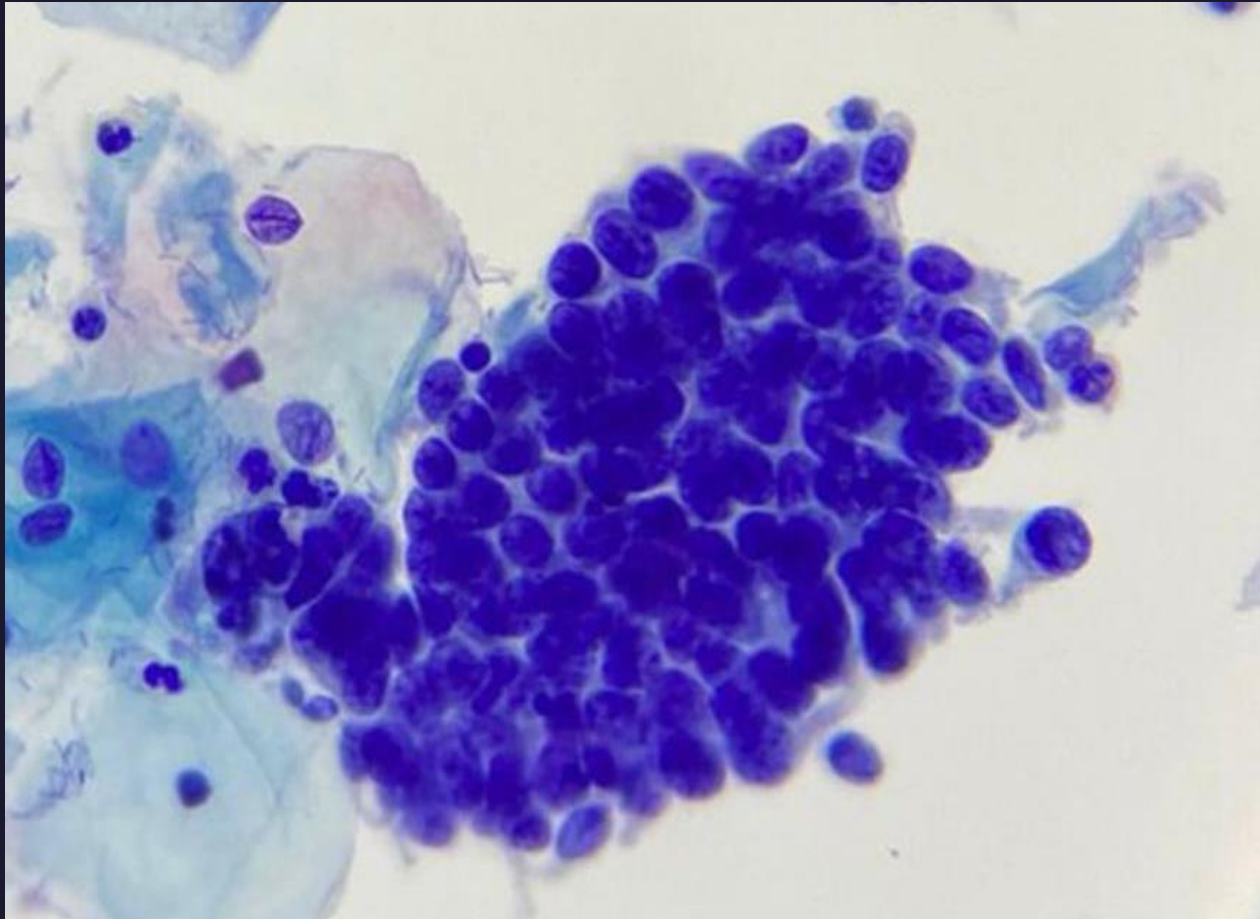


Figura 7: Papanicolau (x40)

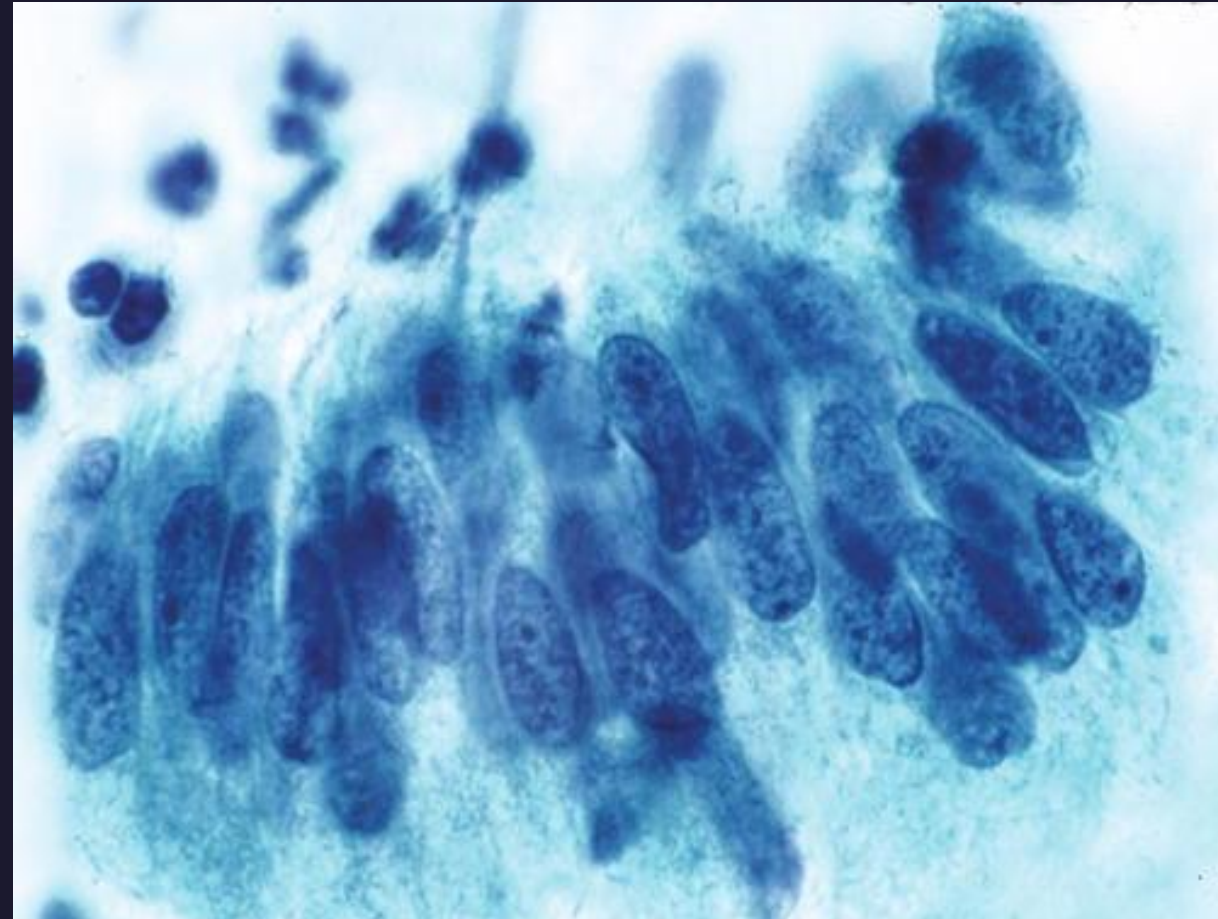


Figura 8: Papanicolau (x40)

ACHADOS CITOLÓGICOS E DIAGNÓSTICO DIFERENCIAL DE ADC ENDOCERVICAL INVASIVO

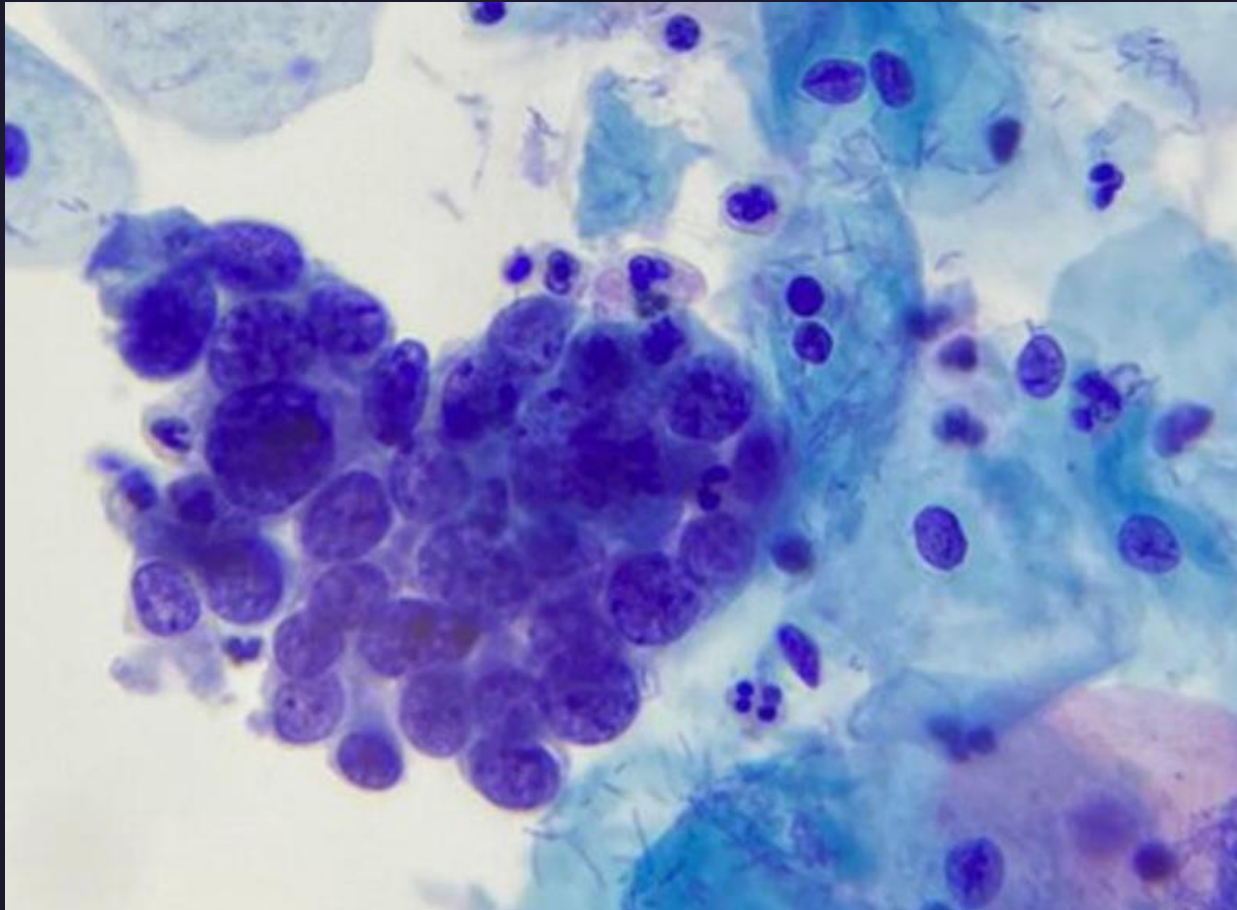


Figura 9: Papanicolau (x40)

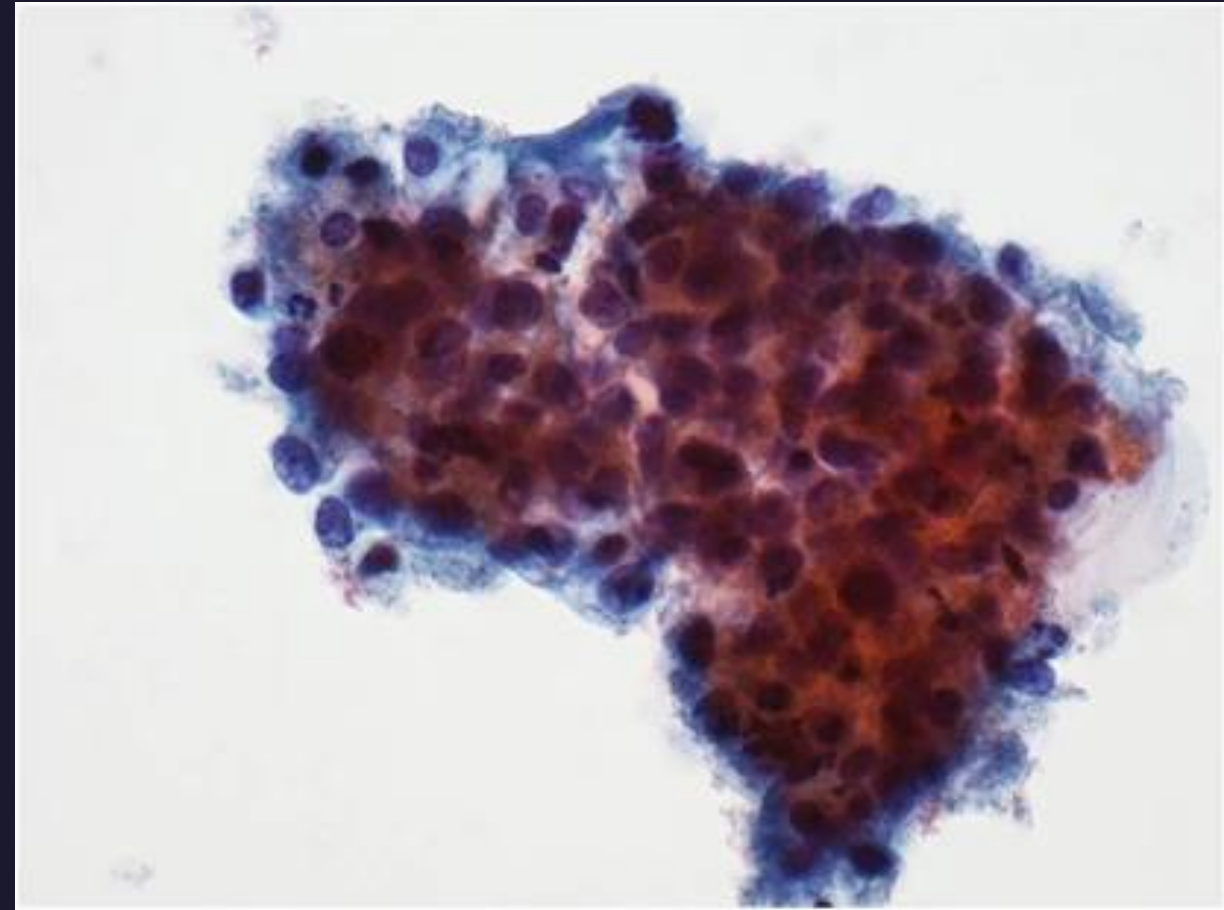


Figura 10: Papanicolau (x40)

RESULTADO CITOLÓGICO







Tipificação de
HPV

HPV subtipo 16
(Alto risco)



ADENOCARCINOMA
ENDOCERVICAL
IN SITU (AIS)
ASSOCIADO A HPV 16

CRITÉRIOS CITOLÓGICOS DE ADENOCARCINOMA ENDOCERVICAL *IN SITU*

-  Células em folhetos, agrupamentos e rosetas com sobreposição
-  'Feathering' e pseudoestraficação
-  Variação do tamanho e forma nuclear (núcleos ovais ou alongados)
-  Hiper Cromasia nuclear com cromatina grosseira ou finamente granular
-  Núcleolos pequenos e inconspícuos.
-  Fundo limpo, sem diátese.

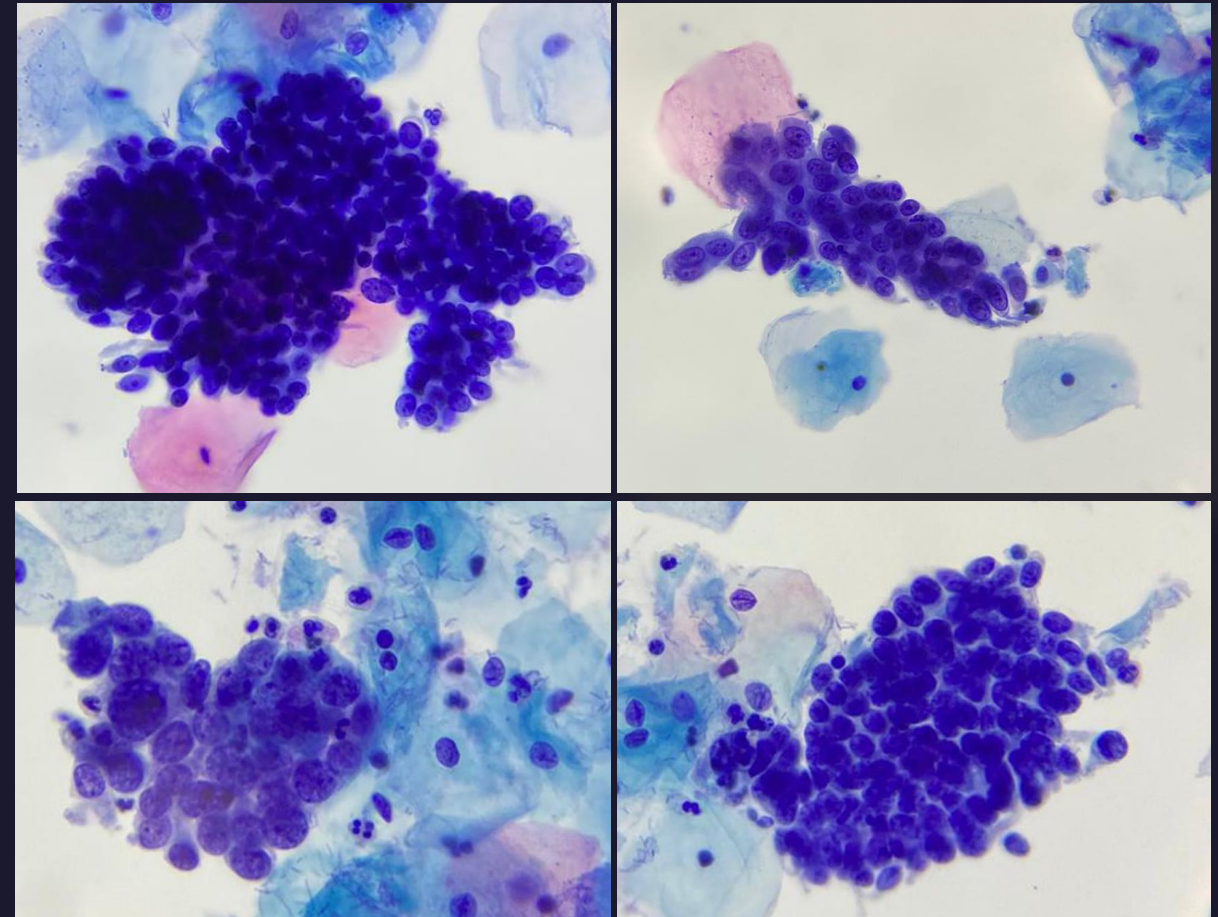


Figura 11: Papanicolau (x40)

EXAME HISTOLÓGICO DA BIÓPSIA

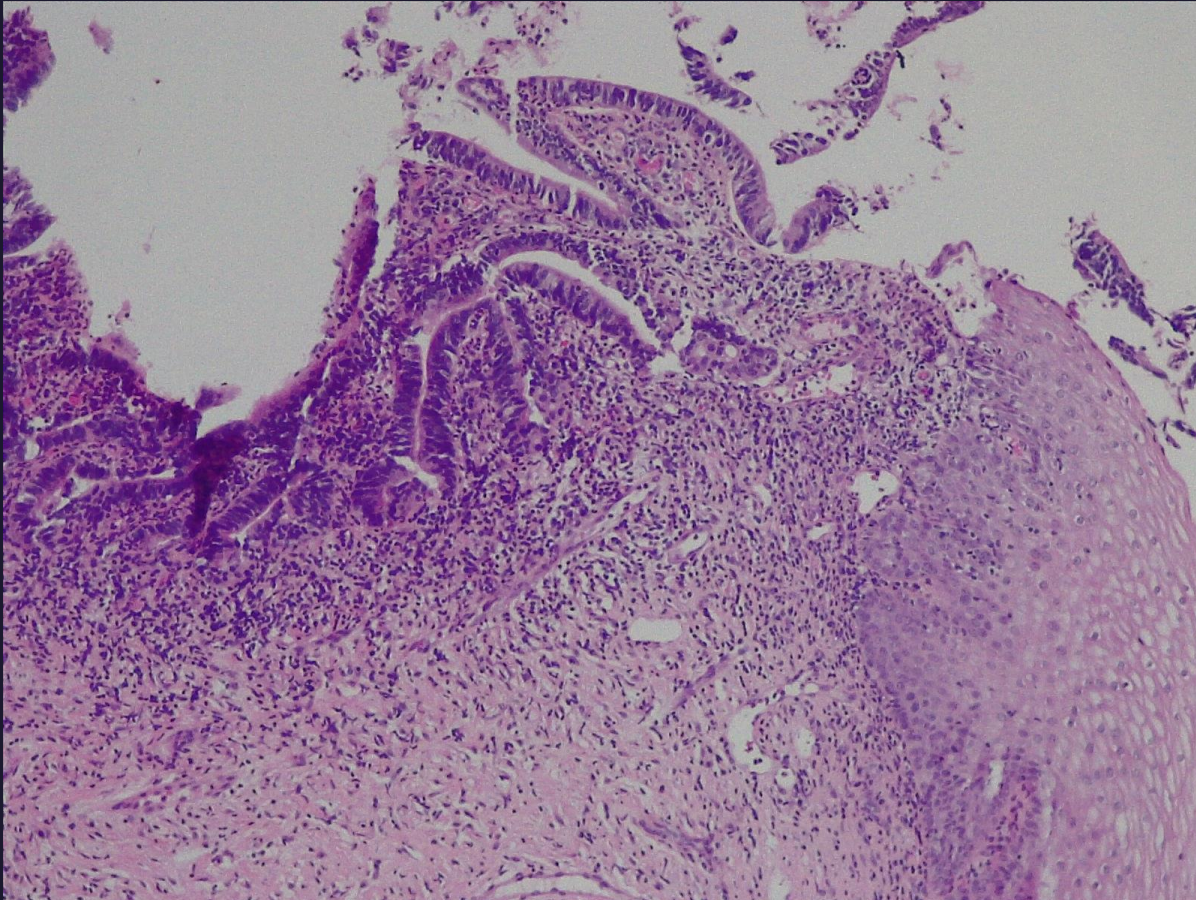


Figura 12: Corte histológico da biópsia, no lado esquerdo epitélio glandular com adenocarcinoma *in situ* e no lado direito epitélio pavimentoso estratificado. H&E (x10)

Colposcopia → Biópsia

Anomalia de grau I

Mucosa da ZT com
adenocarcinoma
endocervical *in situ*

IMUNOHISTOQUÍMICA

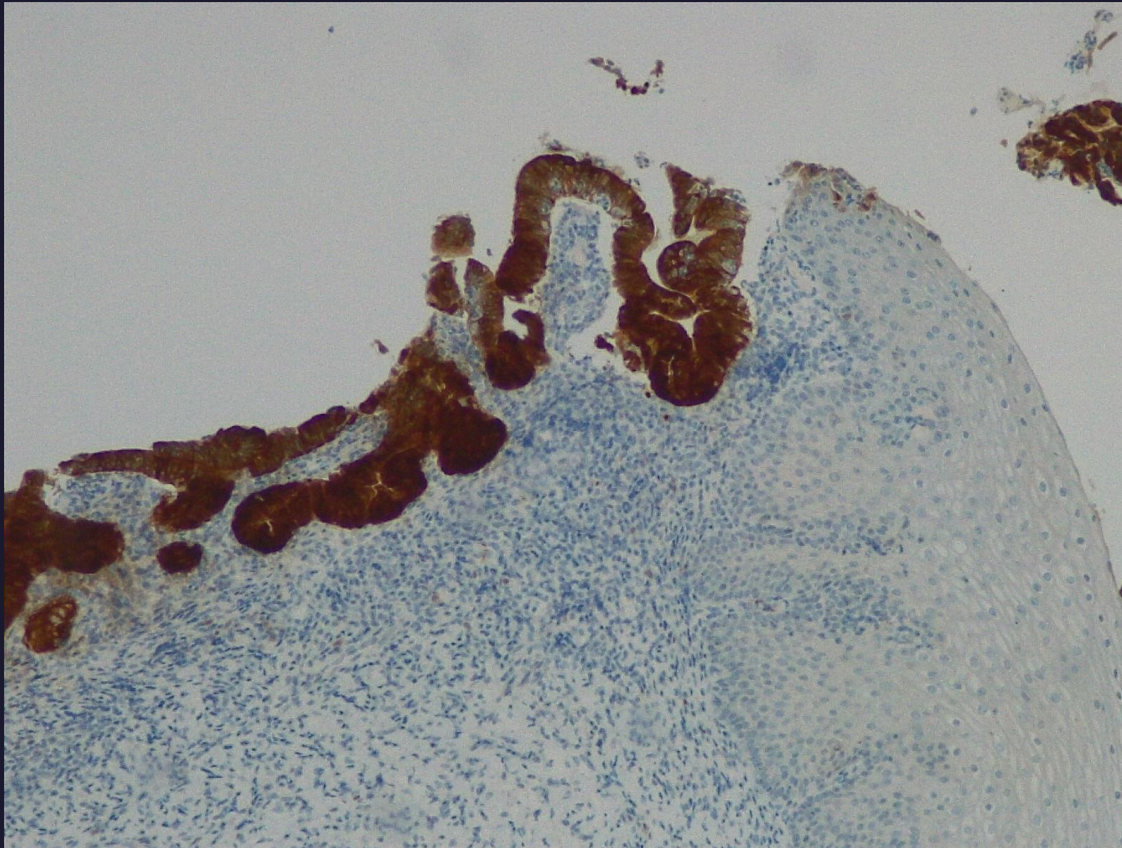


Figura 13: Marcação imunohistoquímica positiva para p16. (10x)

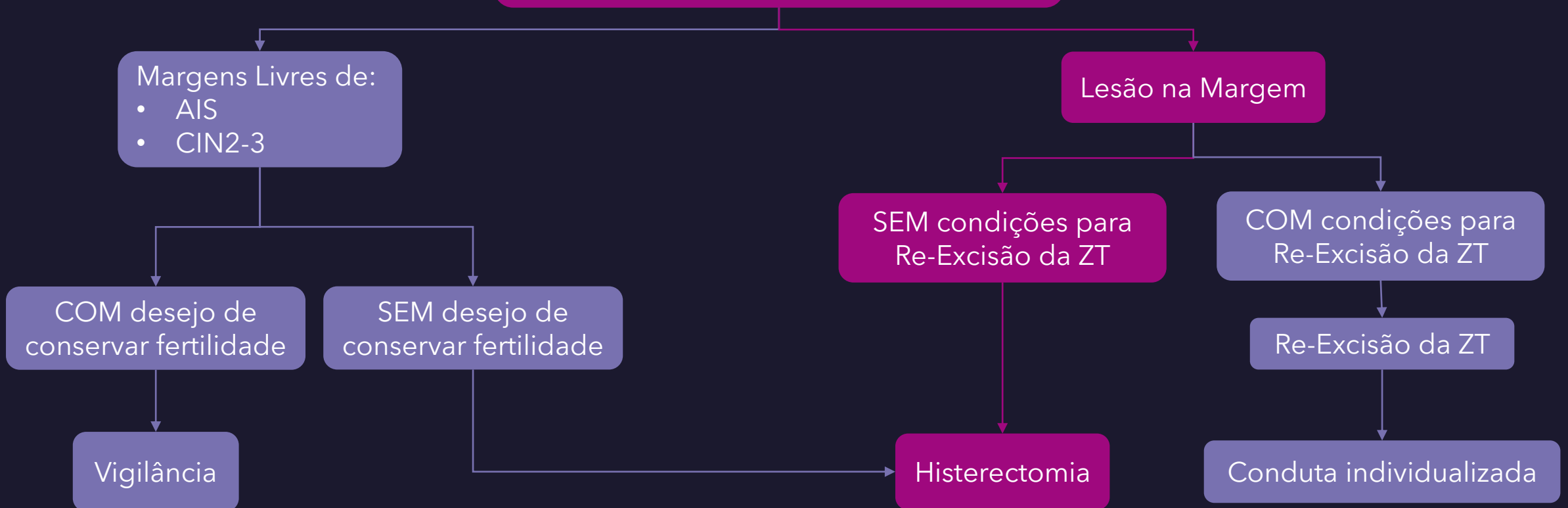
Marcador
Imunohistoquímico p16

Padrão de marcação
difuso

Associado a
adenocarcinomas (HPV+)

FOLLOW-UP

Excisão da Zona de Transformação:
Tipo 3 (Recomendado)
Tipo 2 (Excepcional em mulheres jovens)



EXAME HISTOLÓGICO DA PEÇA DE CONIZAÇÃO

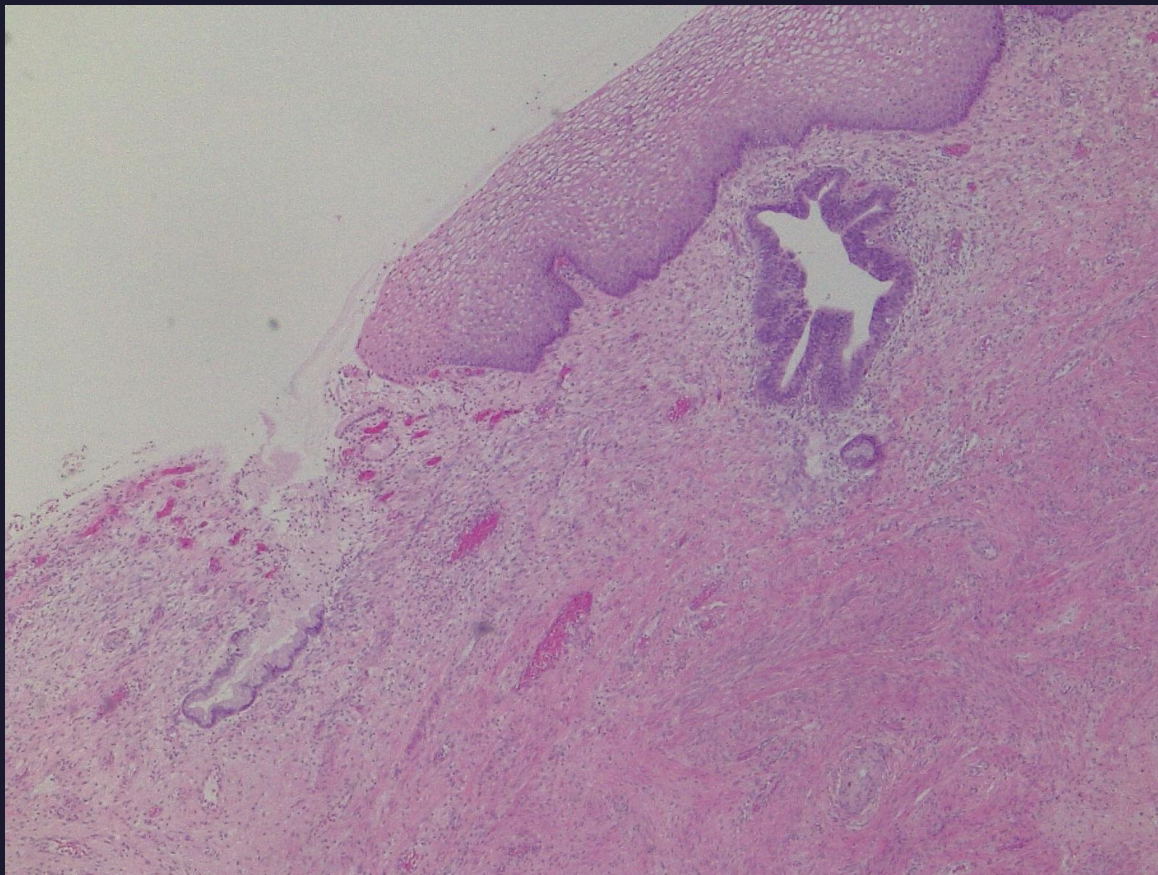


Figura 14: Corte histológico da peça de conização, com margem endocervical com foco de adenocarcinoma *in situ*. (4x, H&E)

Identificada margem endocervical com foco de adenocarcinoma *in situ*

Histerectomia com salpingectomia bilateral

Terapêutica *standard* e definitiva

REFERÊNCIAS BIBLIOGRÁFICAS

- *Consenso sobre infecção por HPV e neoplasia intraepitelial do colo vulva e vagina*. Spginecologia.pt. (2022). Retrieved 26 February 2022, from <https://spginecologia.pt/wp-content/uploads/2021/07/spg-consenso-sobre-infeccao-hpv-2014.pdf>
- Nayar, R., & Wilbur, D. (2015). *The Bethesda system for reporting cervical cytology* (3rd ed.). Springer.
- Wilbur, D. (2022). *Practical issues related to uterine pathology: in situ and invasive cervical glandular lesions and their benign mimics: emphasis on cytology–histology correlation and interpretive pitfalls*. Nature.com. Retrieved 5 March 2022, from <https://www.nature.com/articles/modpathol2015138/figures/1>
- Chew, G. K., Cruickshank, M. E., Rooney, P. H., Miller, I. D., Parkin, D. E., & Murray, G. I. (2005). Human papillomavirus 16 infection in adenocarcinoma of the cervix. *British journal of cancer*, 93(11), 1301–1304. <https://doi.org/10.1038/sj.bjc.6602855>
- Singh, N., Gilks, C., Wing-Cheuk Wong, R., McCluggage, W., & Herrington, C. (2022). *Interpretation of p16 Immunohistochemistry In Lower Anogenital Tract Neoplasia*. Bgcs.org.uk. Retrieved 1 March 2022, from <https://www.bgcs.org.uk/wp-content/uploads/2019/06/Final-BAGP-UKNEQAS-clQC-project-p16-interpretation-guide-2018.pdf>
- Stains & molecular markers p16 [Internet]. 2022 Available from: <https://www.pathologyoutlines.com/topic/stainsdeltanp16.html>