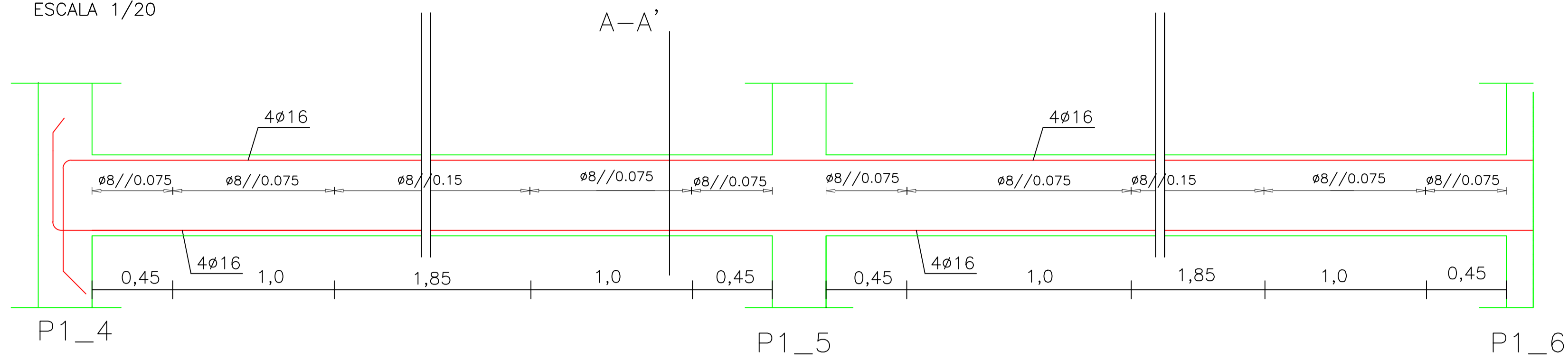
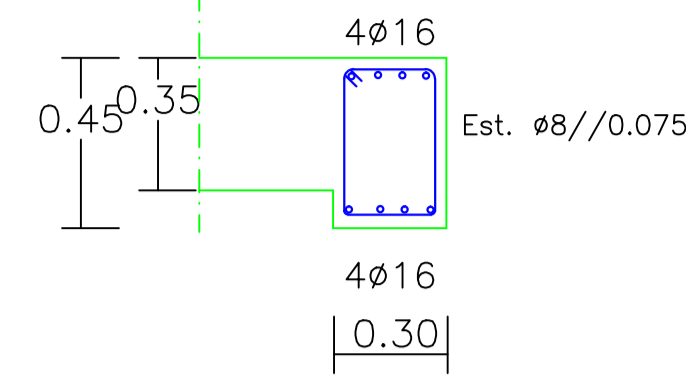


VIGA VG1_7

ESCALA 1/20

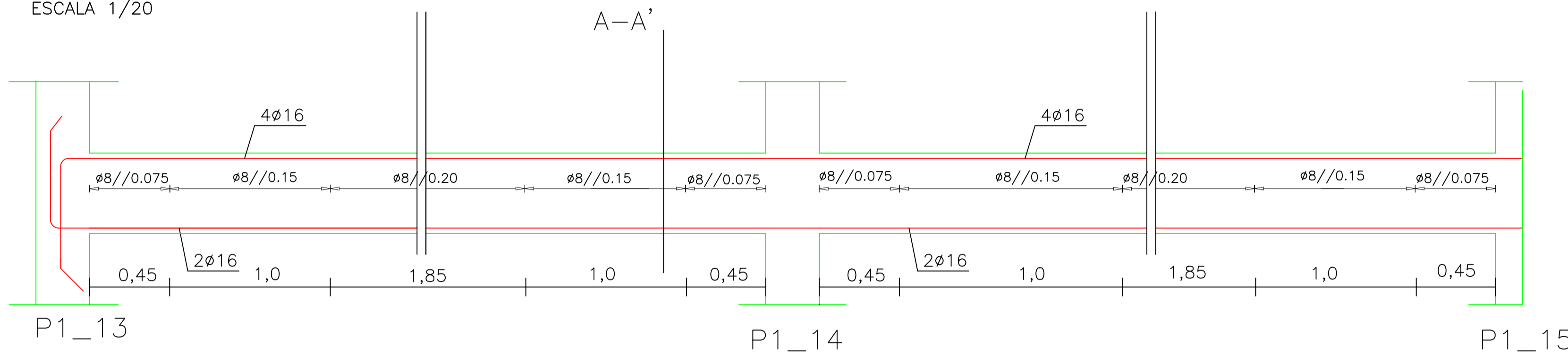


CORTE VG1_7 A-A'

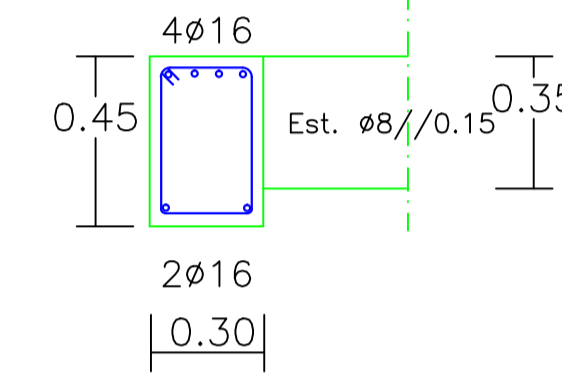


VIGA VG1_8

ESCALA 1/20

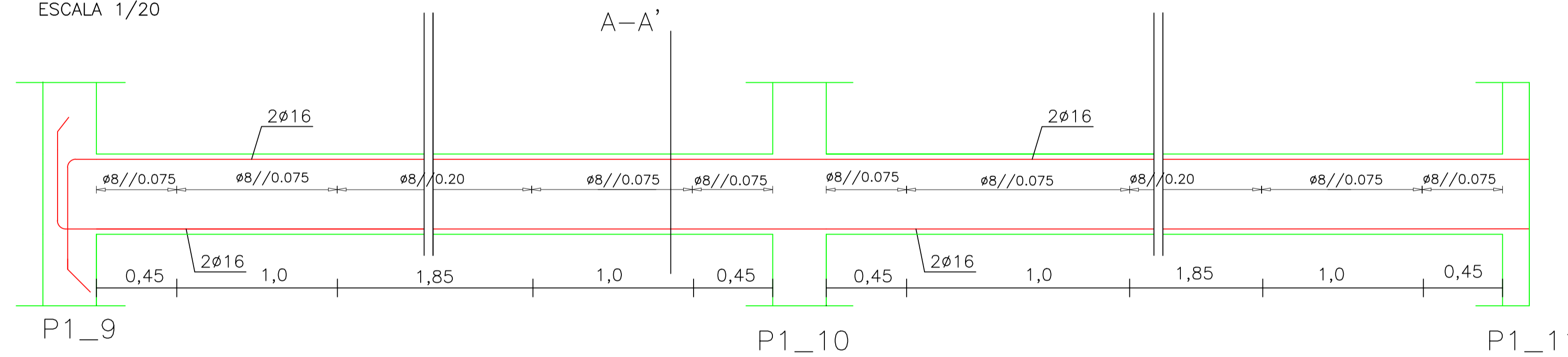


CORTE VG1_8 A-A'

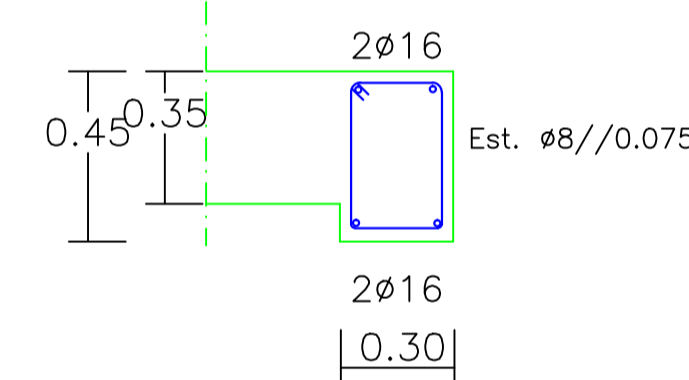


VIGA VG1_10

ESCALA 1/20

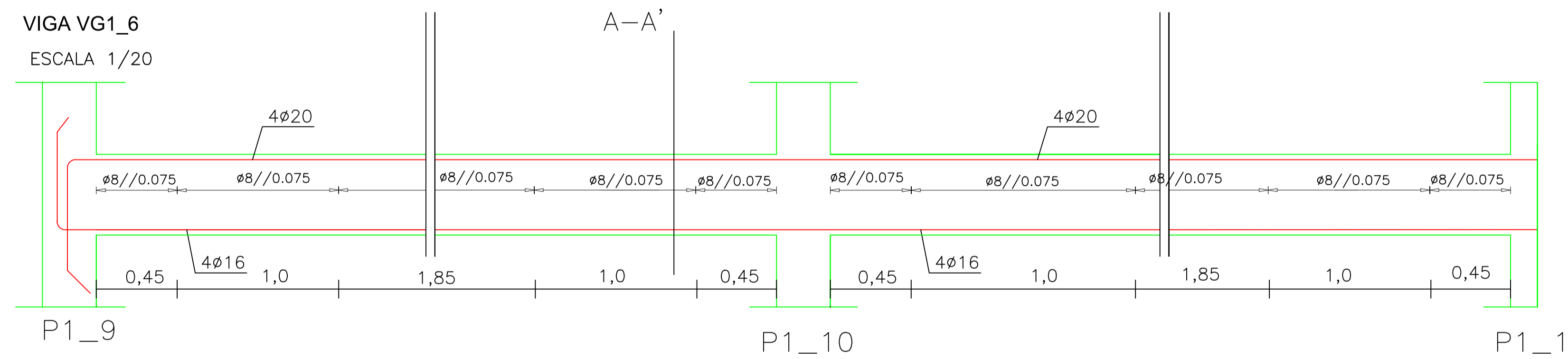


CORTE VG1_10 A-A'

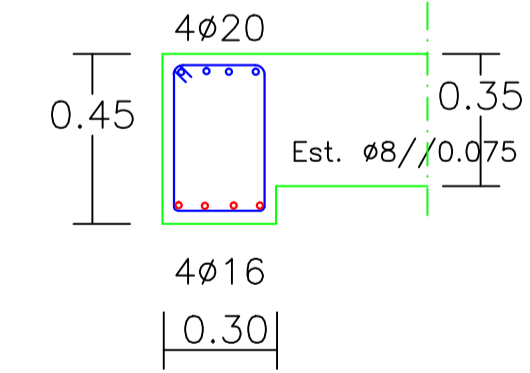


VIGA VG1_6

ESCALA 1/20

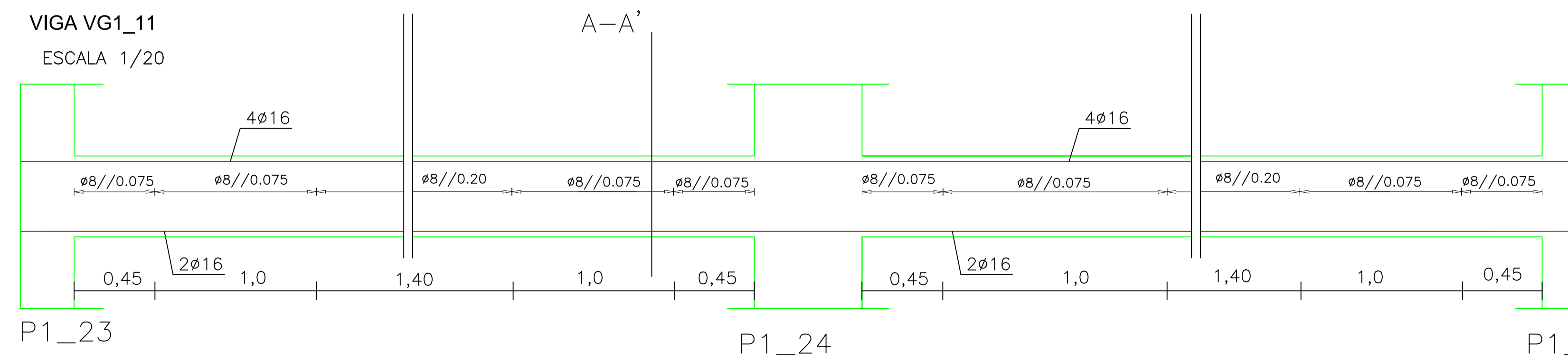


CORTE VG1_6 A-A'

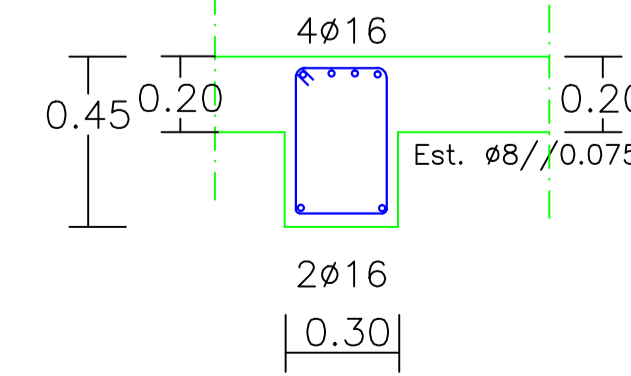


VIGA VG1_11

ESCALA 1/20



CORTE VG1_11 A-A'



COMPRIMENTOS AMARRAÇÃO (lbd) E EMENDA (lbe)		
Varão	lbd (m)	lbe (m)
Ø10	0.40	0.65
Ø12	0.50	0.75
Ø16	0.70	1.00
Ø20	0.85	1.25
Ø25	1.05	1.25

MATERIAIS		
BETÃO	Fundações	NP EN 206-1:C25/30·XC2(P)·CL0,40·Dmáx 22·S4
	Superestrutura	NP EN 206-1:C25/30·XC1(P)·CL0,40·Dmáx 22·S4
AÇO	Regularização	NP EN 206-1:C16/20·XC1(P)·CL0,40·Dmáx 22·S4
	Fundações	A400NR SD
	Superestrutura	A400NR SD

RECOBRIMENTOS	
Fundações	5.0cm
Pilares e Vigas	3.5cm
Lajes	3.5cm

<p>ISEL</p>	<p>Área Departamental de Engenharia Civil</p> <p>Mestrado em Engenharia Civil</p>	
	<p>Trabalho Final de Mestrado</p>	
<p>Realizado por:</p> <p>André Cardoso</p> <p>Nº 33505</p>	<p>BETÃO ARMADO</p> <p>Vigas - VG1_6/7/8/10/11</p>	<p>Folha: 5/6</p> <p>NºDes. 16/17</p> <p>Escala: 1/20</p> <p>Data: DEZEMBRO/15</p>