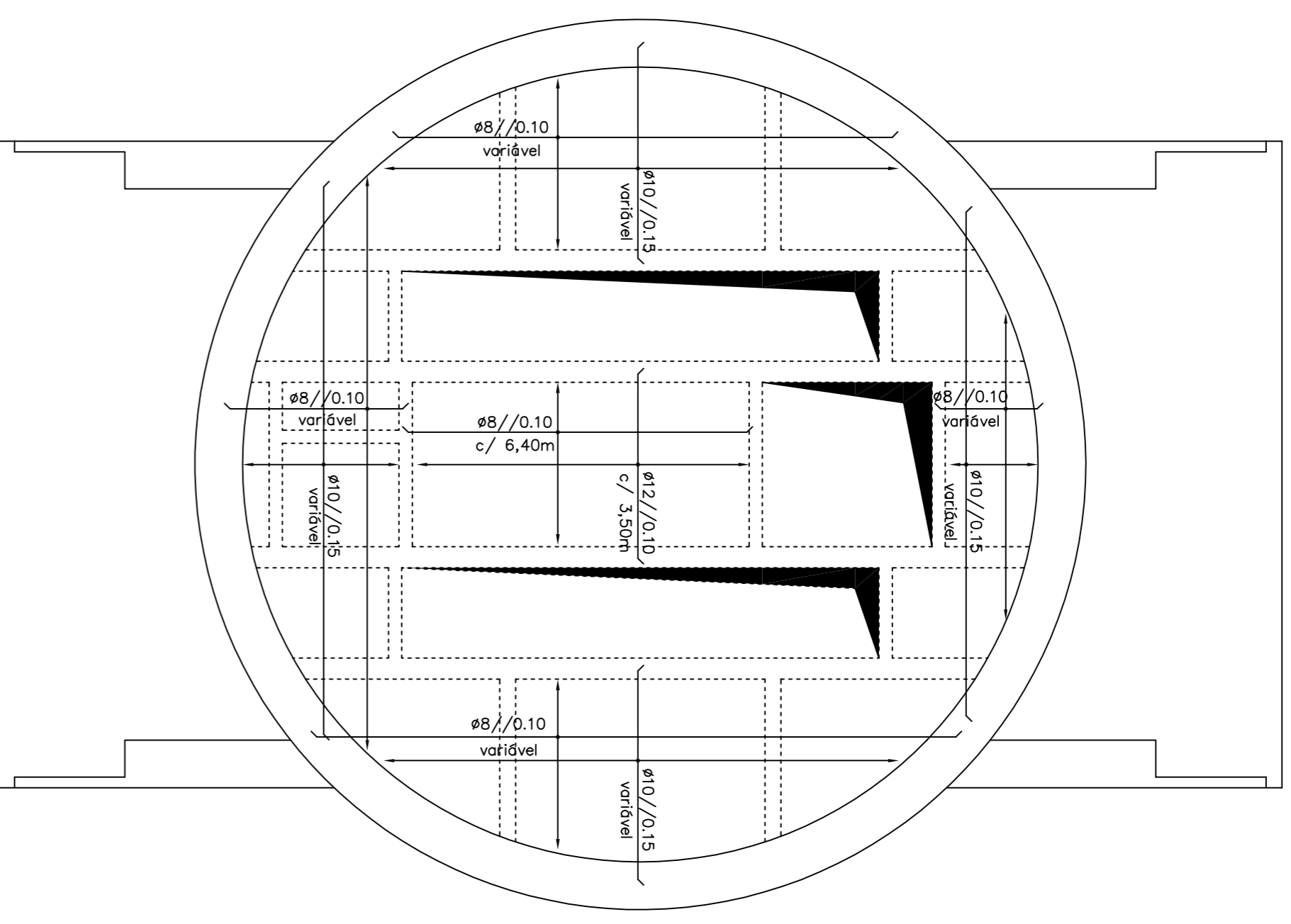


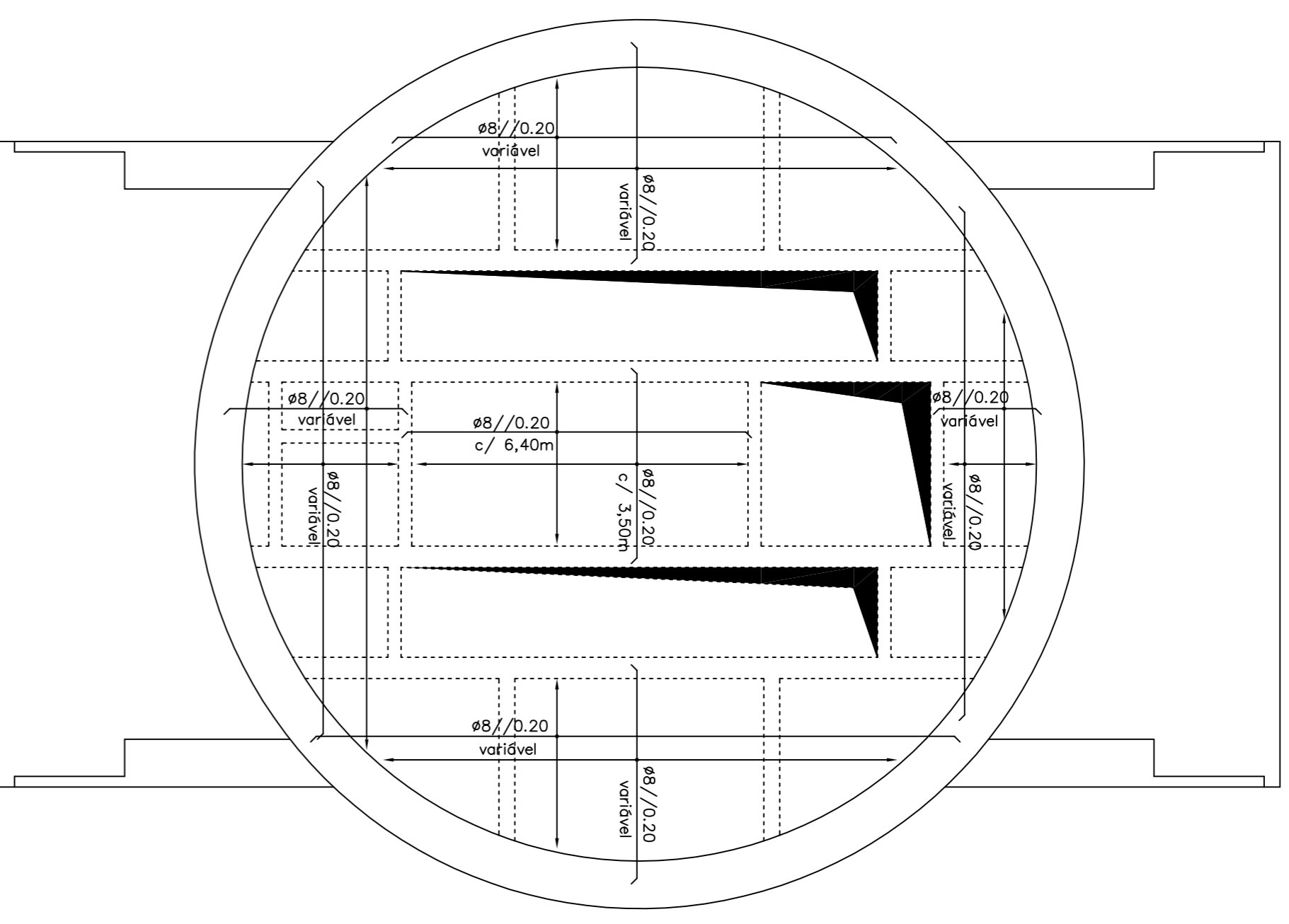
RAZO A/C	RAZO A/C	DOSAGEM CIMENTO	RECOBRIMENTO (cm)
0.55	0.55	280kg/m ³	EXT. INT.
			4.0 4.0

DESENHOS A CONSULTAR:

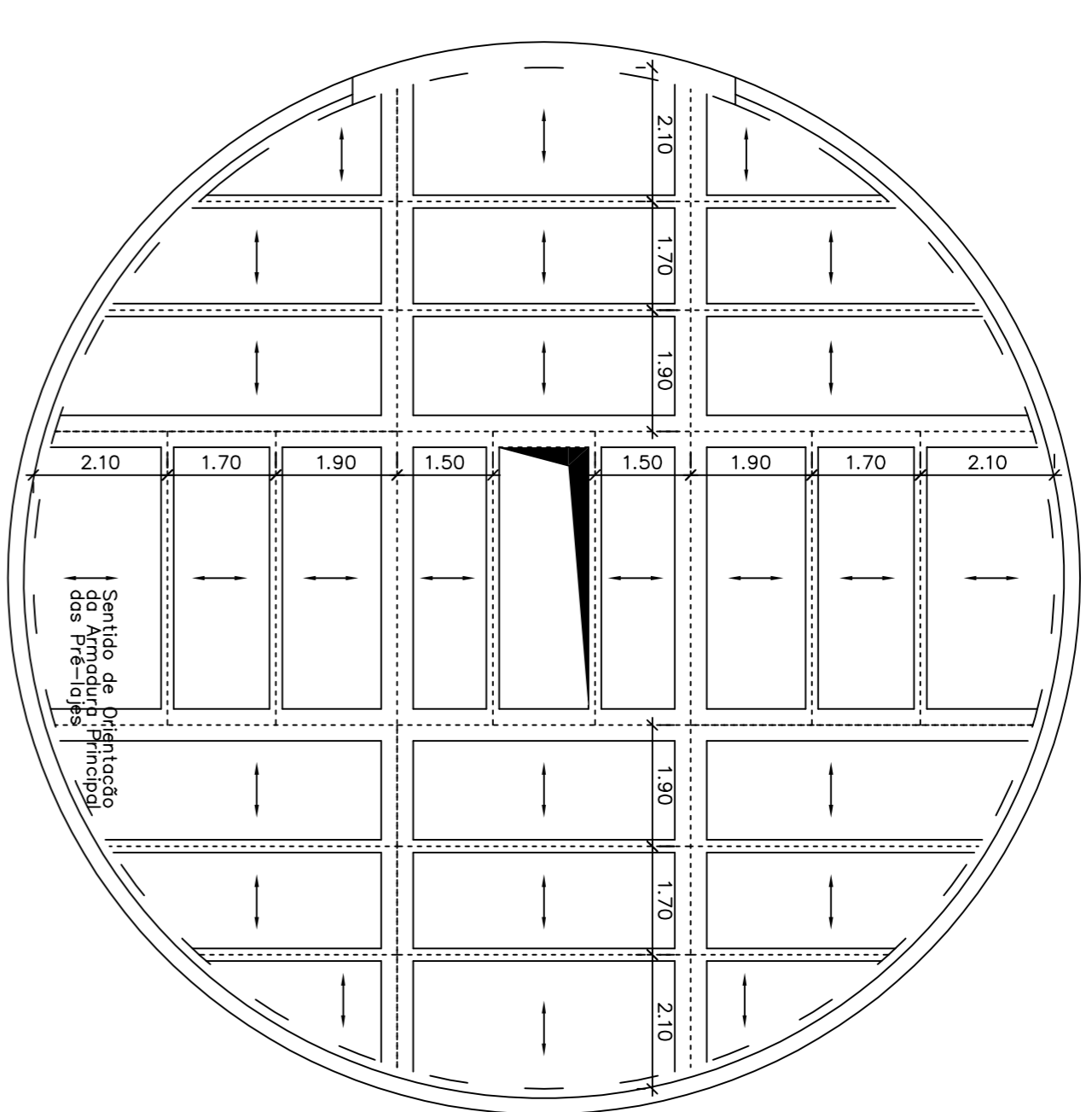
- 1/9 Vista Rio, Alçado e Corte
- 3/9 Planta do Piso +5.80 e +48.80
- 4/9 Planta do Piso +56.00 e Tremocho
- 8/9 Vigas 1.1 1.2 1.3 1.4 1.5 1.6 Betão Armado
- 9/9 Vigas 2.1 2.2 2.3 2.4 2.5 2.6 2.7 Betão Armado



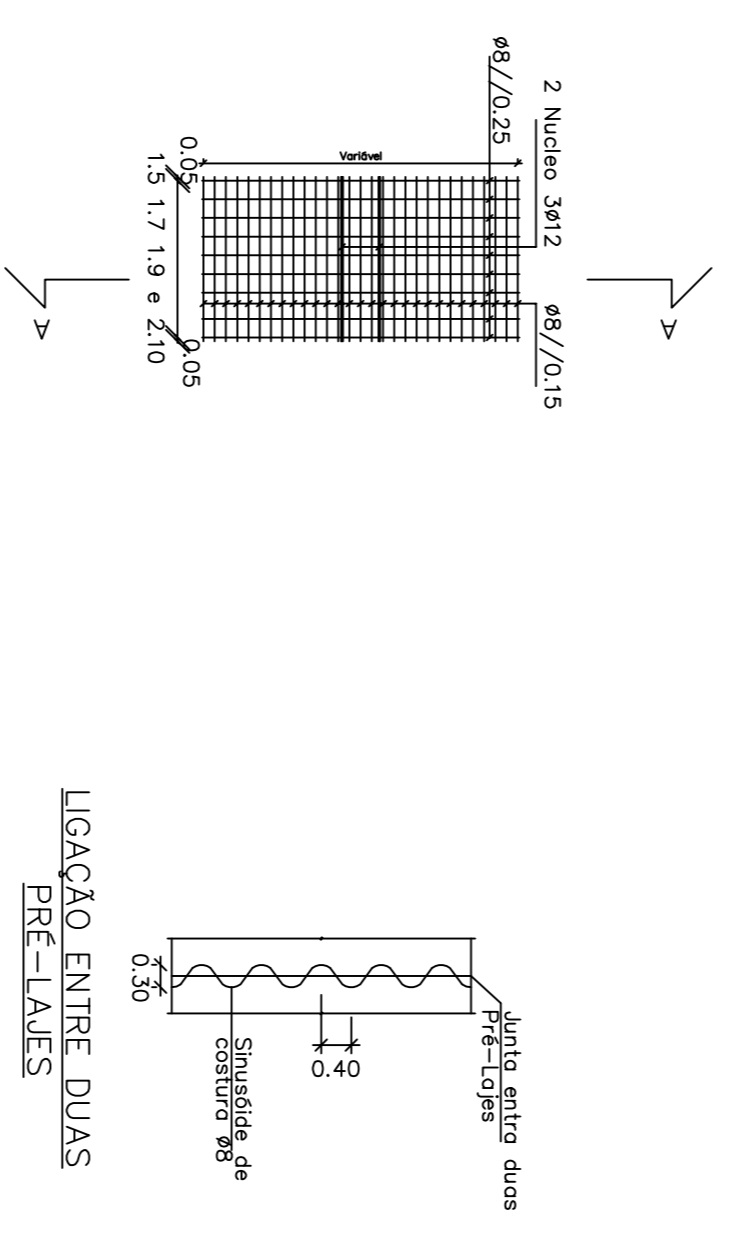
PISO +5.80 ARMADURA INFERIOR



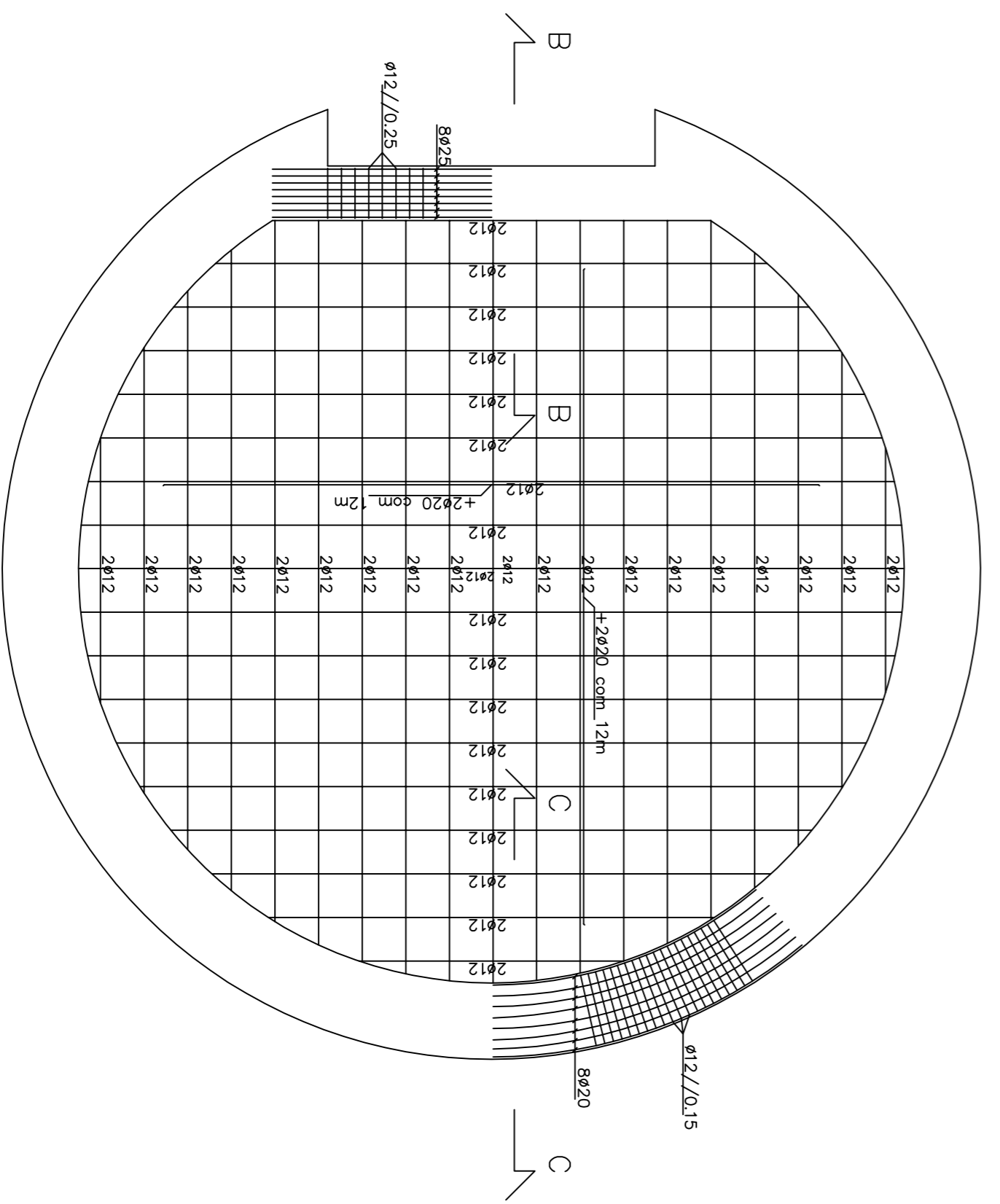
PISO +5.80 ARMADURA SUPERIOR



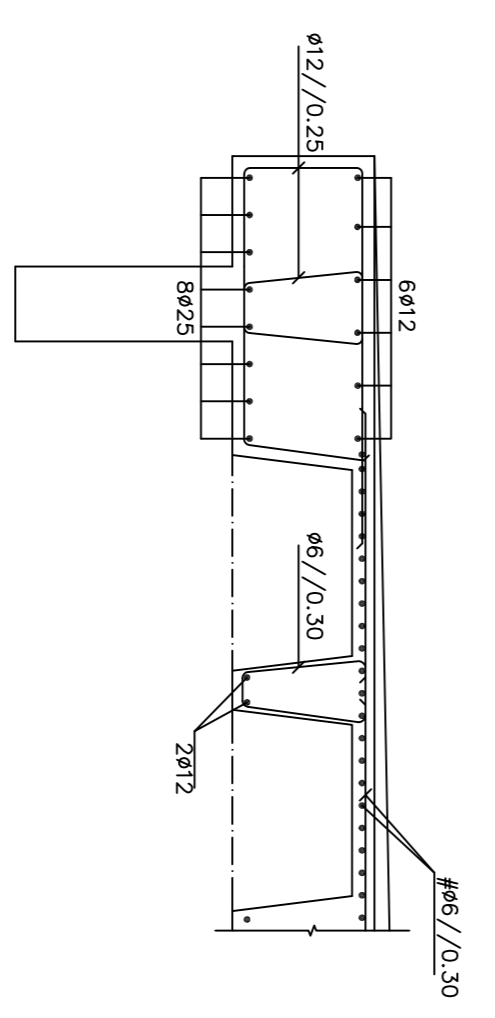
PISO +48.80
Esp. = 0,14m



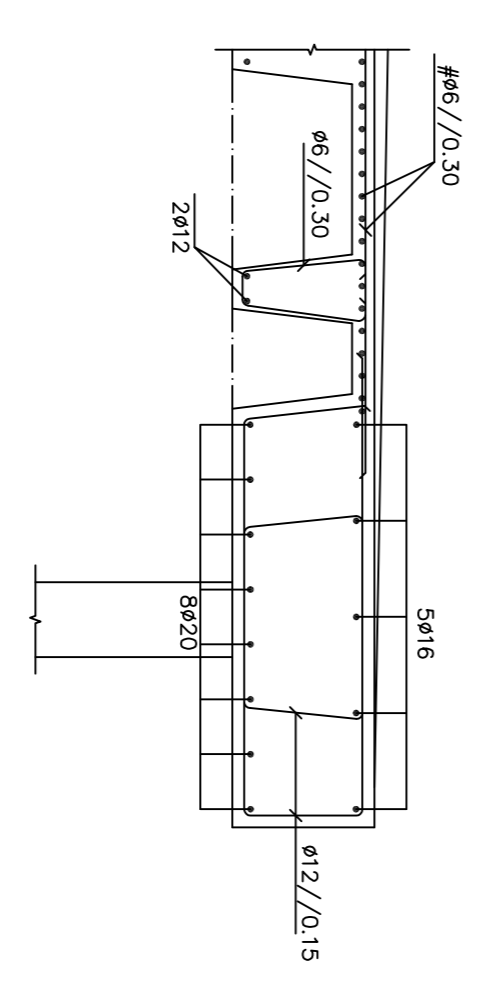
PRÉ-FABRICES
NOTA - todos os pré-fabrics têm armaduras executadas para o seu geométrico em planta



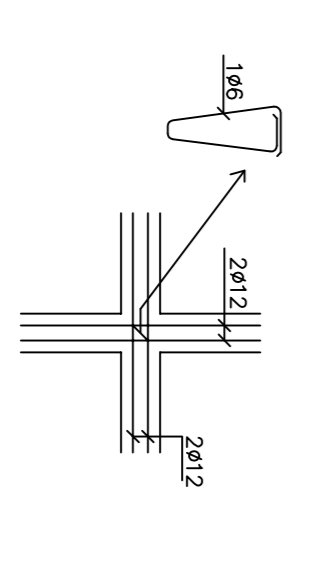
PISO +56.00



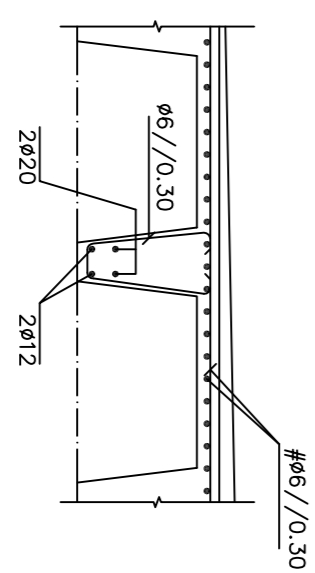
CORTE B-B
Esp. 1/250



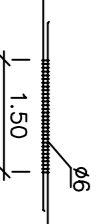
CORTE C-C
Esp. 1/250



CRUZAMENTO DAS NERVURAS
Esp. 1/250



VIGAS 3.1 A MEIO VÃO
Esp. 1/250

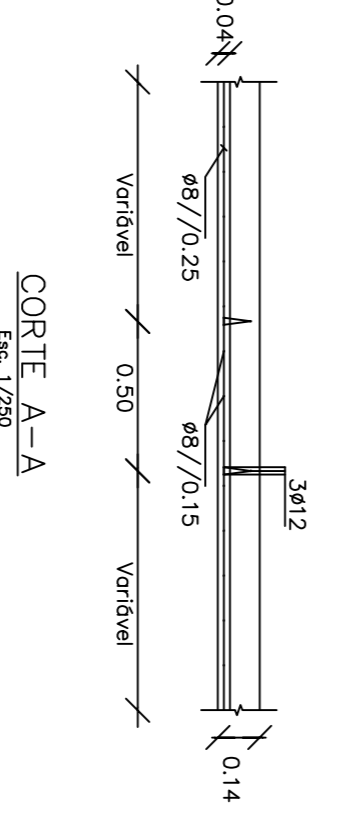


AMARRAÇÃO A CONSIDERAR NOS EMPALMES

DESENHOS A CONSULTAR:

- 11/12 Vigas 1.1 1.2 1.3 1.4 1.5 1.6
- 12/12 Vigas 2.1 2.2 2.3 2.4 2.5 2.6 2.7

NOTA - A armadura superior das Pré-Lajes é #8/0.25



CORTE A-A
Esp. 1/250

Revisão	A	Alterações	20/05/2011	Assinado
INSTITUTO SUPERIOR DE ENGENHARIA DE LISBOA				
ARMAZENAGEM DE CIMENTO - SILO				



PROJECTO DE EXECUÇÃO	PISOS +5.80, +48.80, +56.00 BETÃO ARMADO	Desenho Nº: 7/9	Escalas: 1:100
Projecto/ARQ/OWS	ANDRÉ PIÇA DE CAMPOS	Revisão	
Nº 30533	Verificou	Substitui:	
TRABALHO FINAL MESTRADO	Fact. pót. : 1000 = 100 Arquivos	Siss. per.	