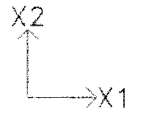


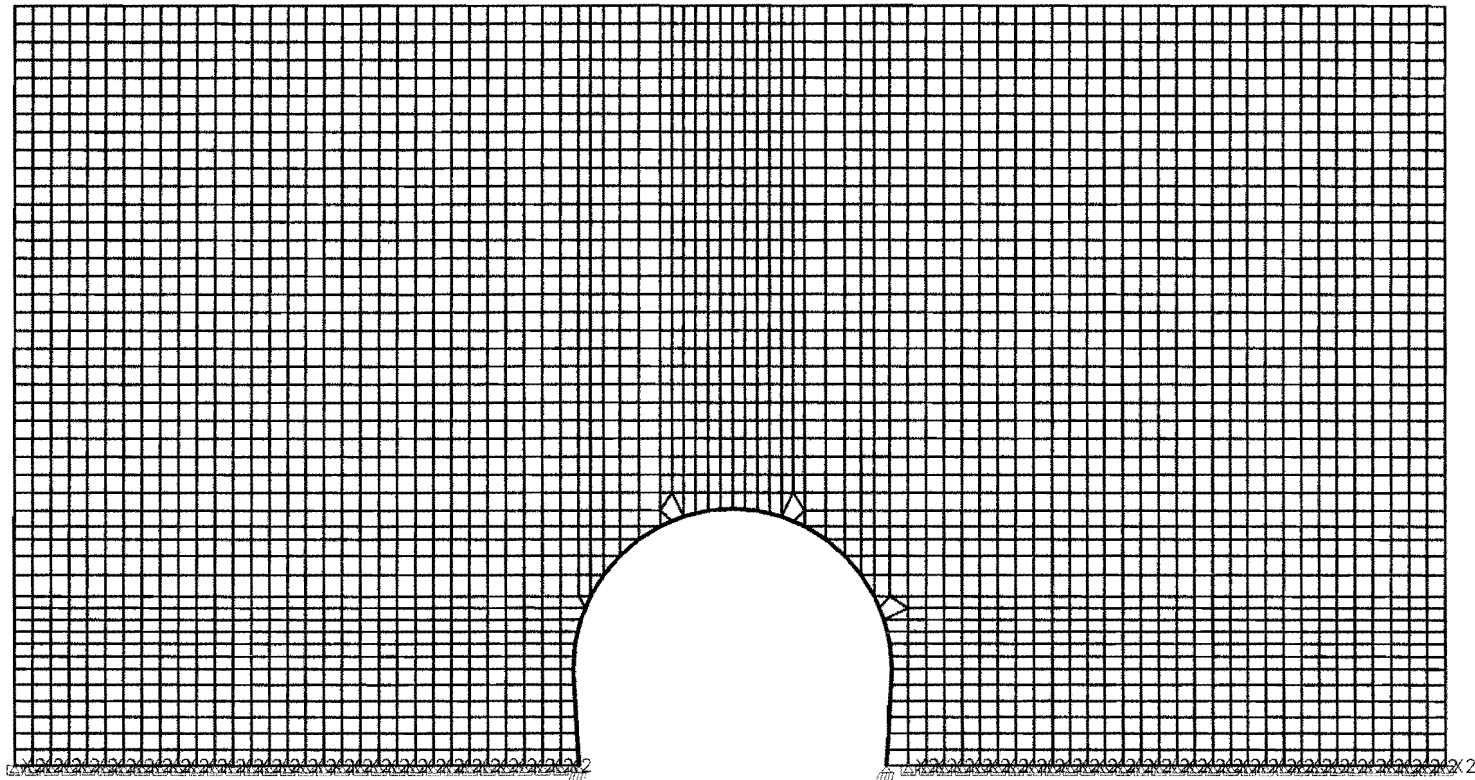
Tnel_0+615m



SCALE = 1:210

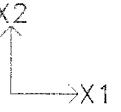
UNITS: kN m

DATE:10-11-11



GEOMETRY

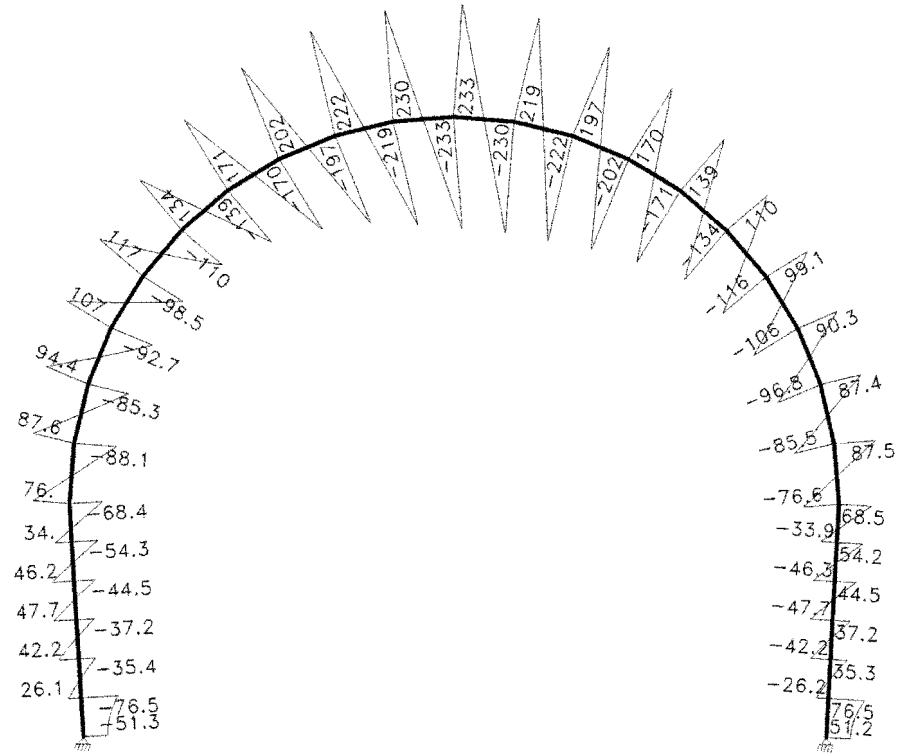
Tnel_0+615m



SCALE = 1:87

UNITS: kN

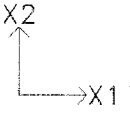
DATE:10-11-11



V2 SHEAR

COMB. NO. 1 Combinao ELU1

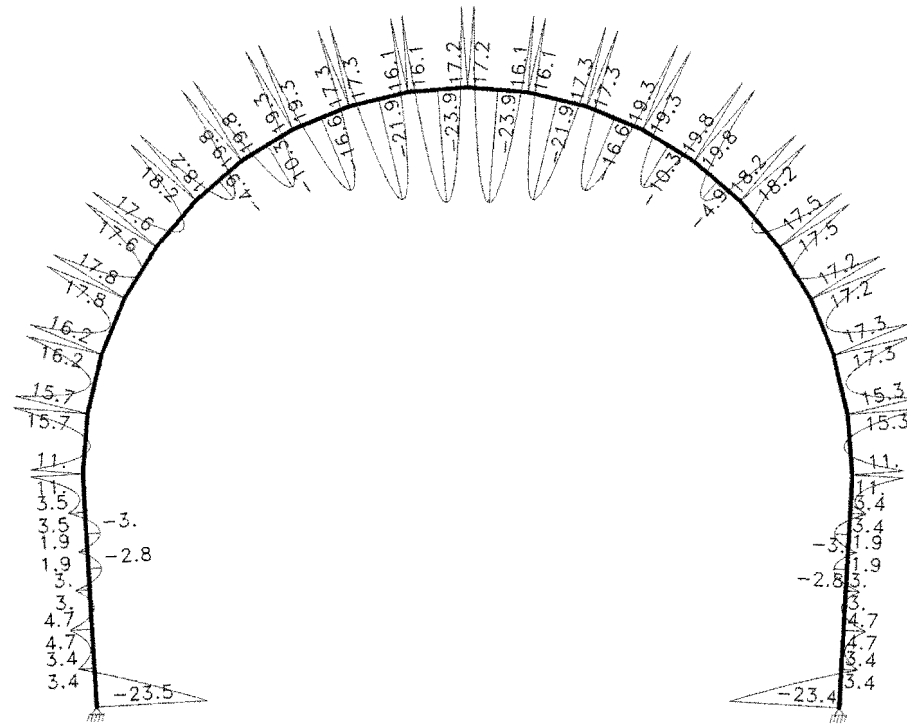
Tnel_0+615m



SCALE = 1:87

UNITS: kN*m

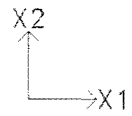
DATE:10-11-11



M3 MOMENT

COMB. NO. 1 Combinac ELU1

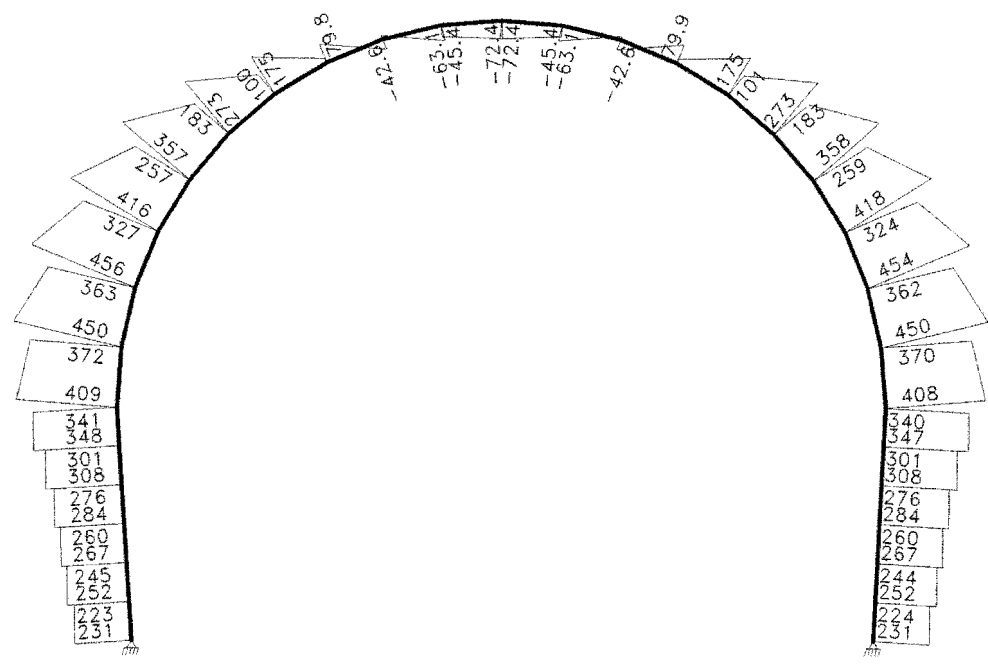
Tnel_0+615m



SCALE = 1:87

UNITS: kN

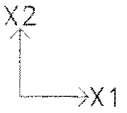
DATE:10-11-11



AXIAL FORCE

COMB. NO. 3 Combinac FREQUENTE1

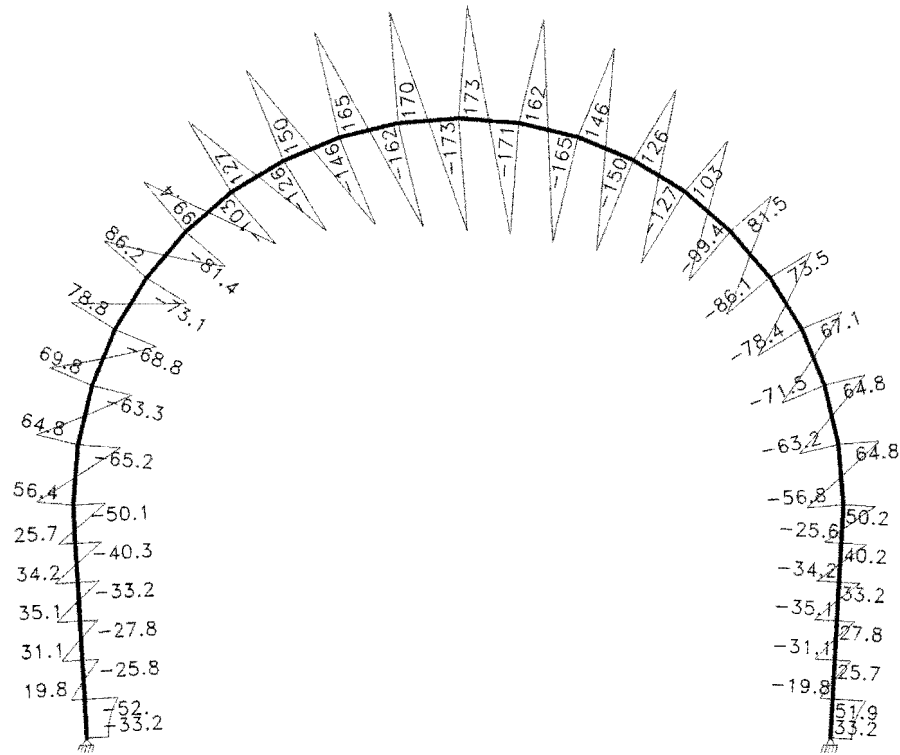
Tnel_0+615m



SCALE = 1:87

UNITS: kN

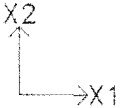
DATE:10-11-11



V2 SHEAR

COMB. NO. 3 Combinao FREQUENTE1

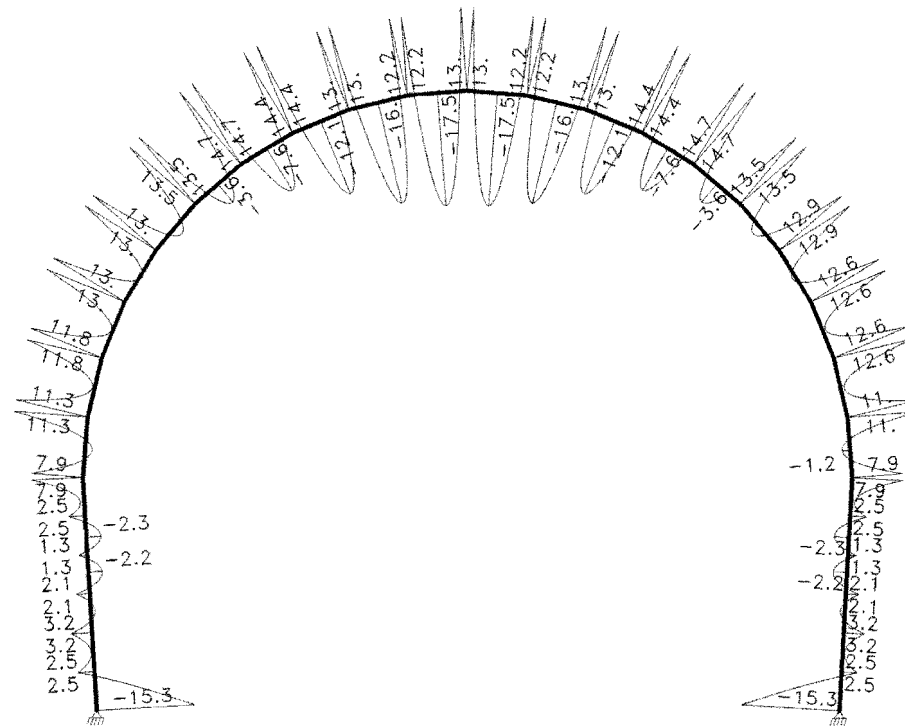
Tnel_0+615m



SCALE = 1:87

UNITS: kN*m

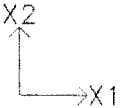
DATE:10-11-11



M3 MOMENT

COMB. NO. 3 Combinao FREQUENTE1

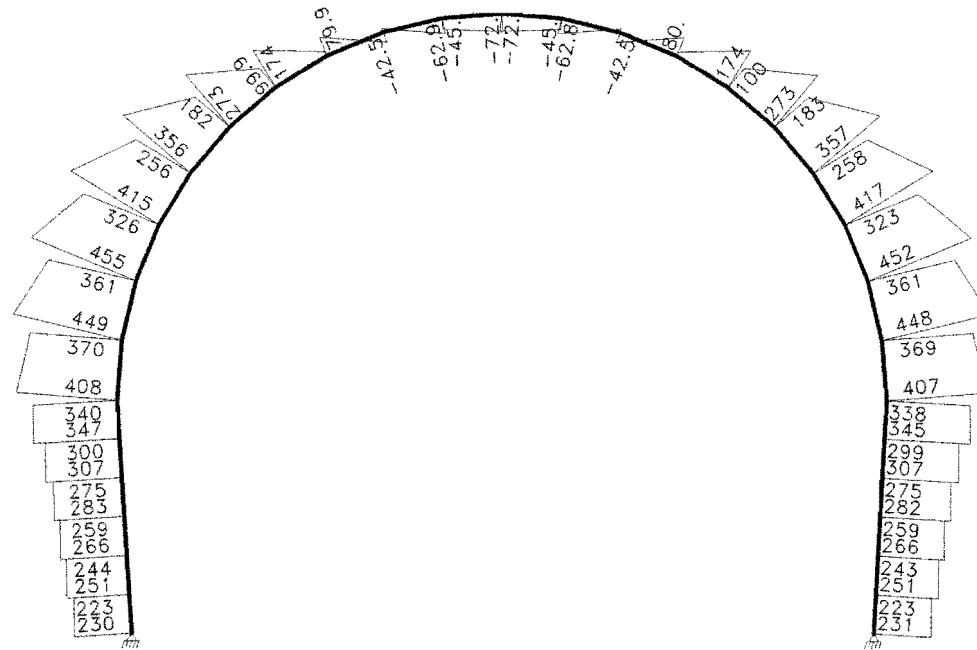
Tnel_0+615m



SCALE = 1:87

UNITS: kN

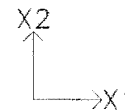
DATE:10-11-11



AXIAL FORCE

COMB. NO. 4 Combinao FREQUENTE2

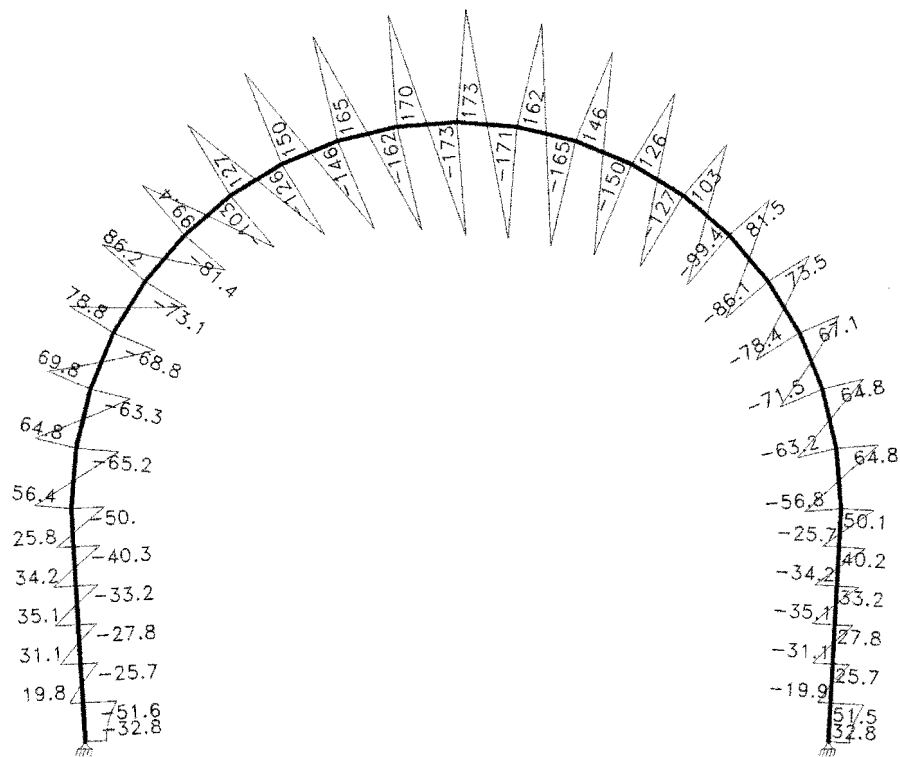
Tnel_0+615m



SCALE = 1:87

UNITS: kN

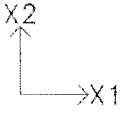
DATE:10-11-11



V2 SHEAR

COMB. NO. 4 Combinacão FREQUENTE2

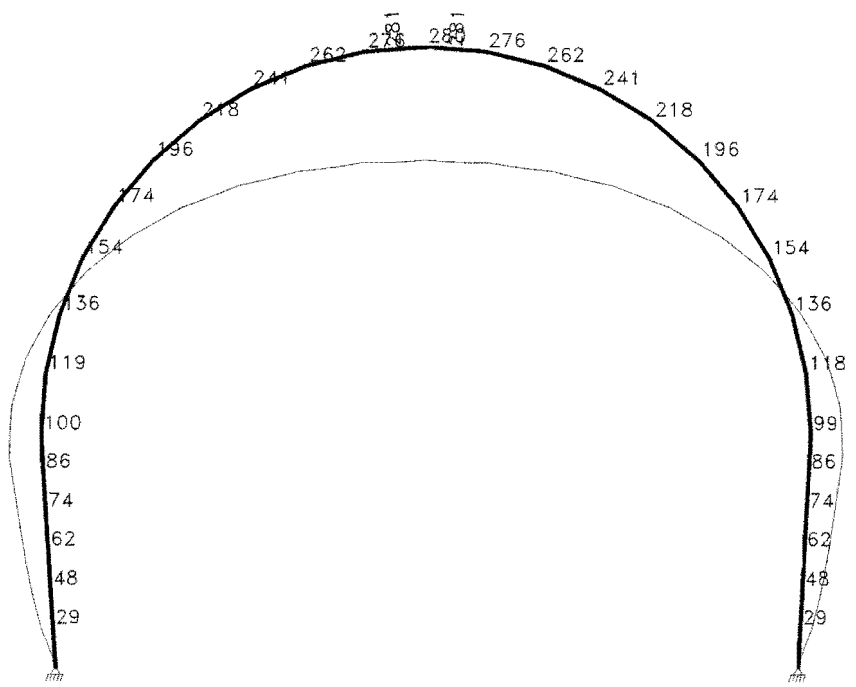
Tnel_0+615m



SCALE = 1:87

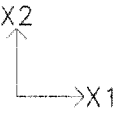
UNITS: meter

DATE:10-11-11



VALUES ARE * 10⁻⁶
DISPLACEMENTS LOAD NO. 1 P.P.Gran

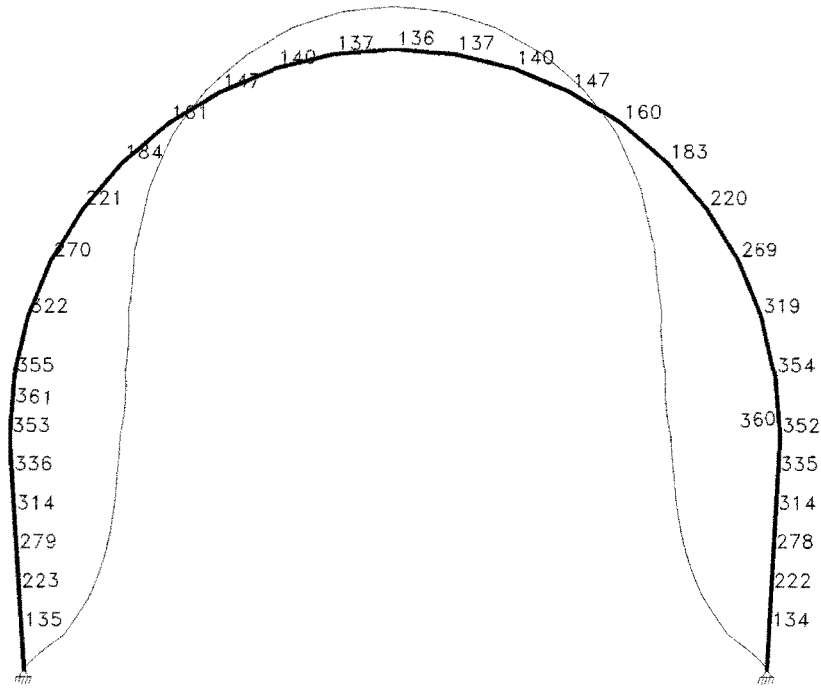
Tnel_0+615m



SCALE = 1:87

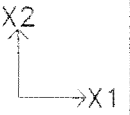
UNITS: meter

DATE:10-11-11



VALUES ARE * 10⁻⁹
DISPLACEMENTS LOAD NO. 2 Carga Unitria

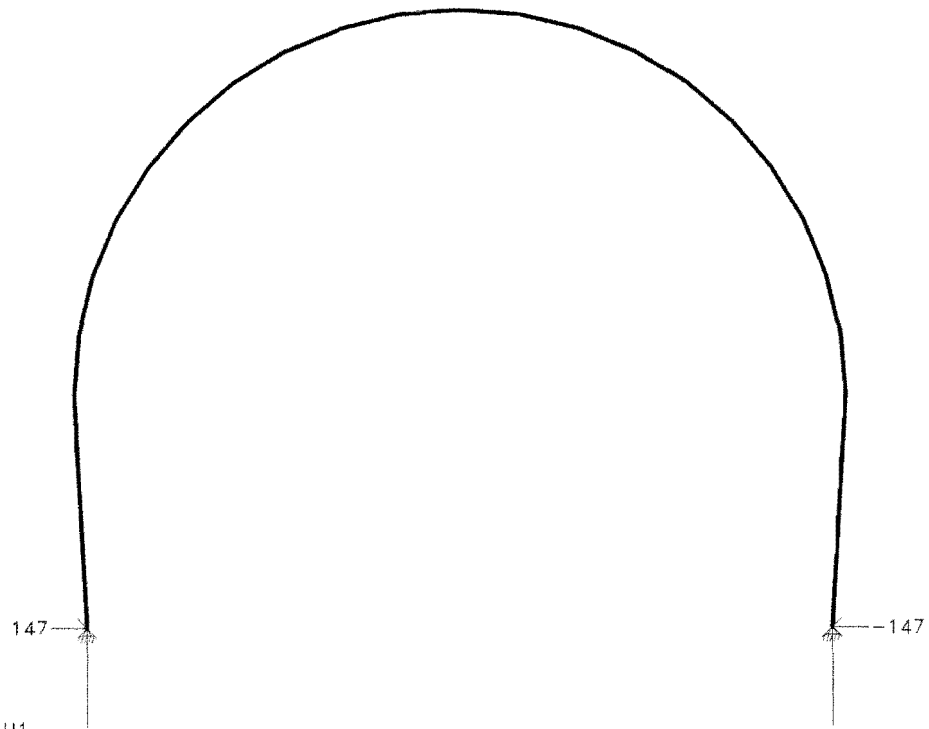
Tnel_0+615m



SCALE = 1:87

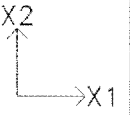
UNITS: kN

DATE:10-11-11



REACTIONS COMB. NO. 1 Combinao ELU1

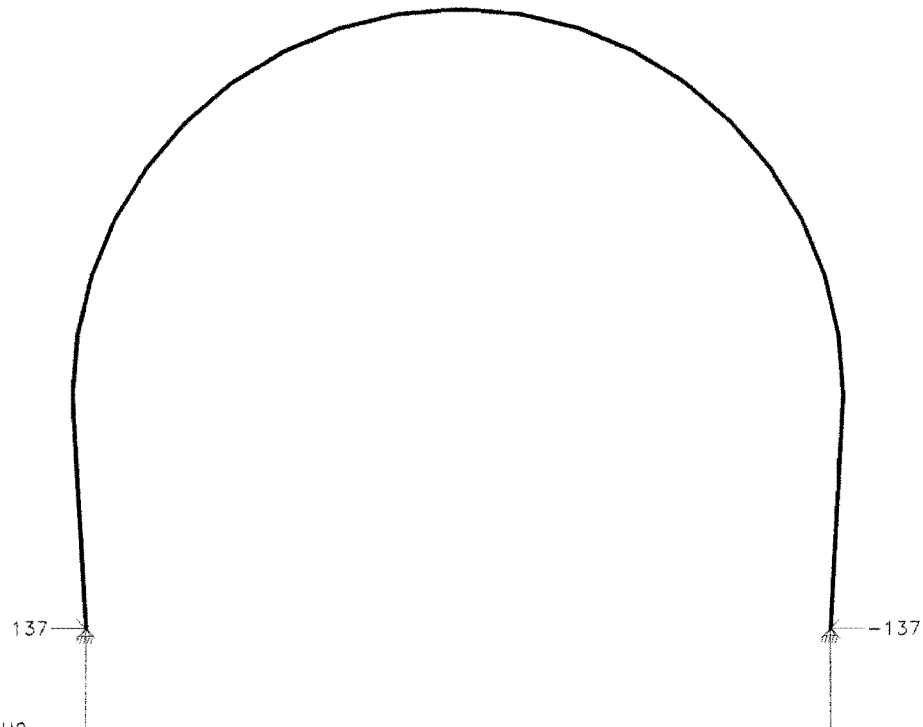
Tnel_0+615m



SCALE = 1:87

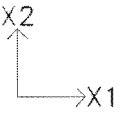
UNITS: kN

DATE:10-11-11



REACTIONS COMB. NO. 2 Combinação ELU2

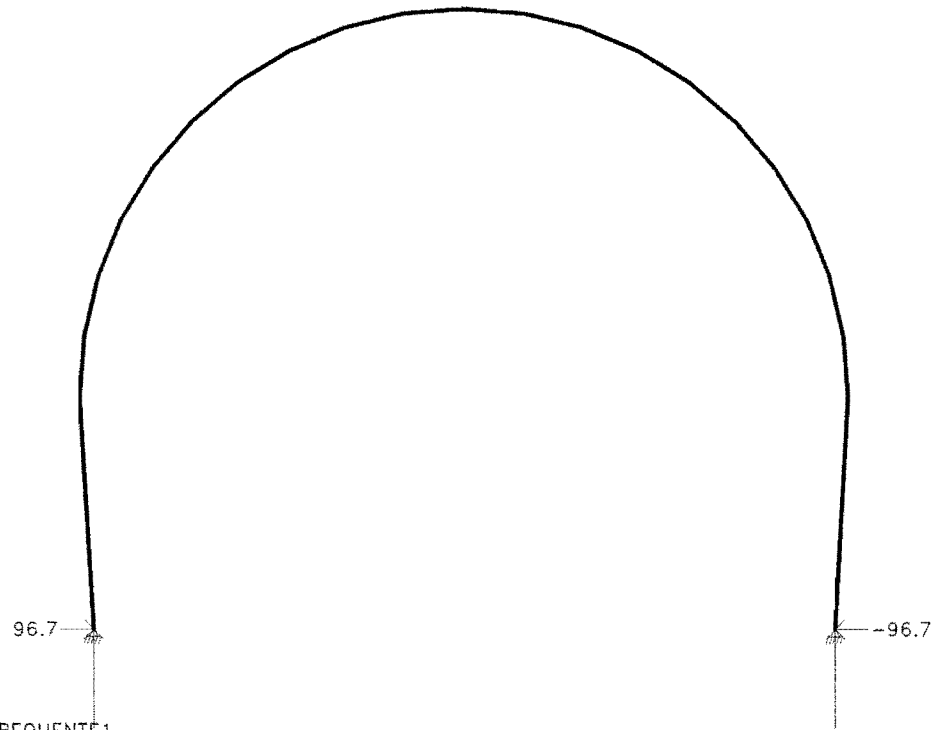
Tnel_0+615m



SCALE = 1:87

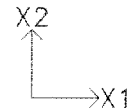
UNITS: kN

DATE:10-11-11



REACTIONS COMB. NO. 3 Combinao FREQUENTE1

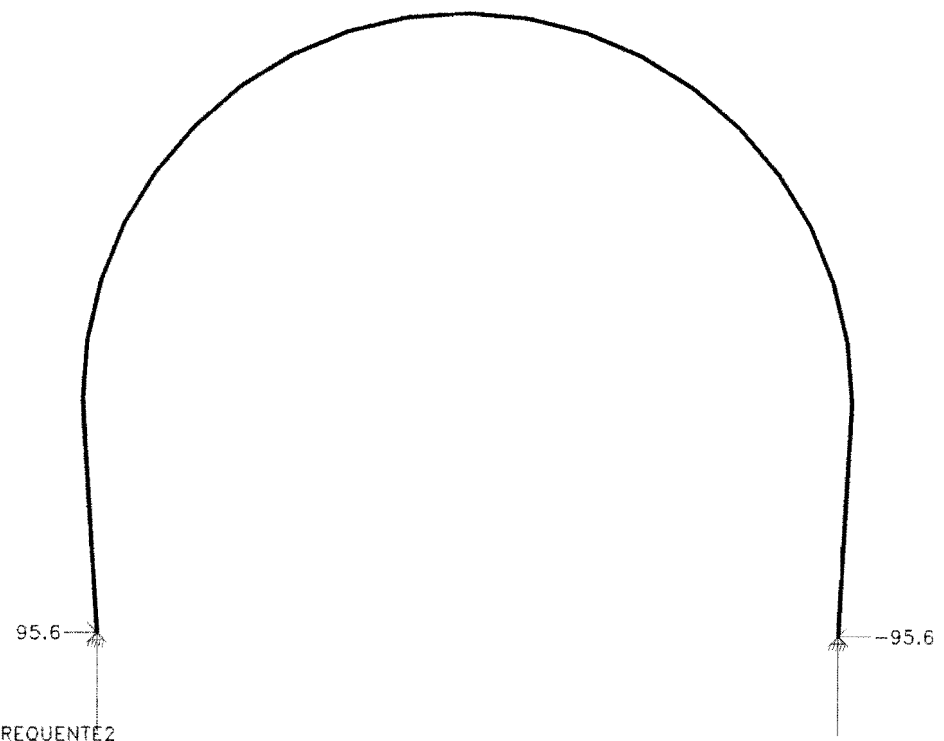
Tnel_0+615m



SCALE = 1:87

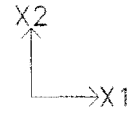
UNITS: kN

DATE:10-11-11



REACTIONS COMB. NO. 4 Combinao FREQUENTE2

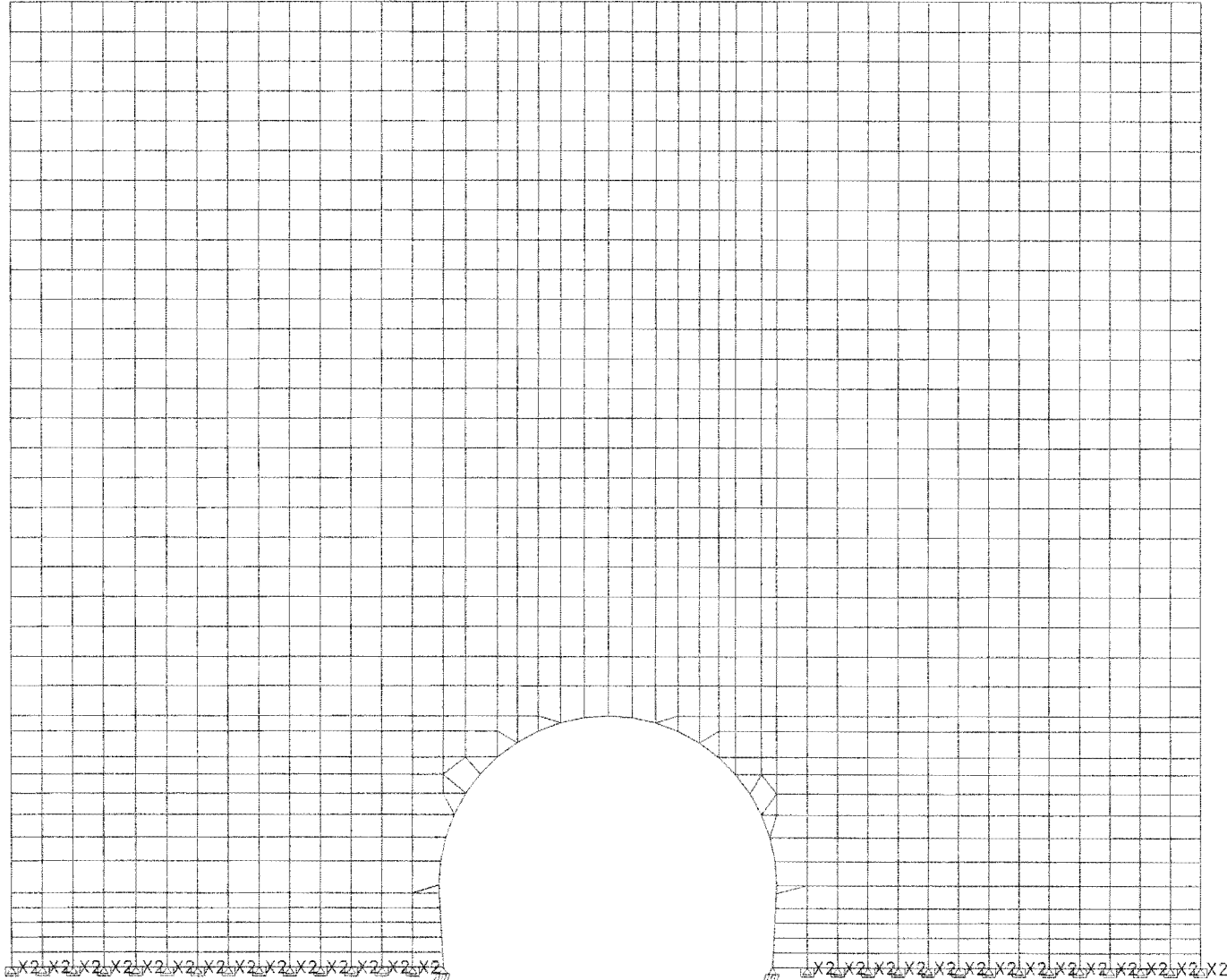
Tnel_0+627m



SCALE = 1:227

UNITS: kN m

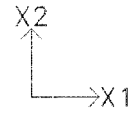
DATE:10-11-11



X2 X2 X2 X2 X2 X2 X2 X2 X2 X2 X2 X2 X2 X2 X2
GEOMETRY

X2 X2 X2 X2 X2 X2 X2 X2 X2 X2 X2 X2 X2 X2 X2

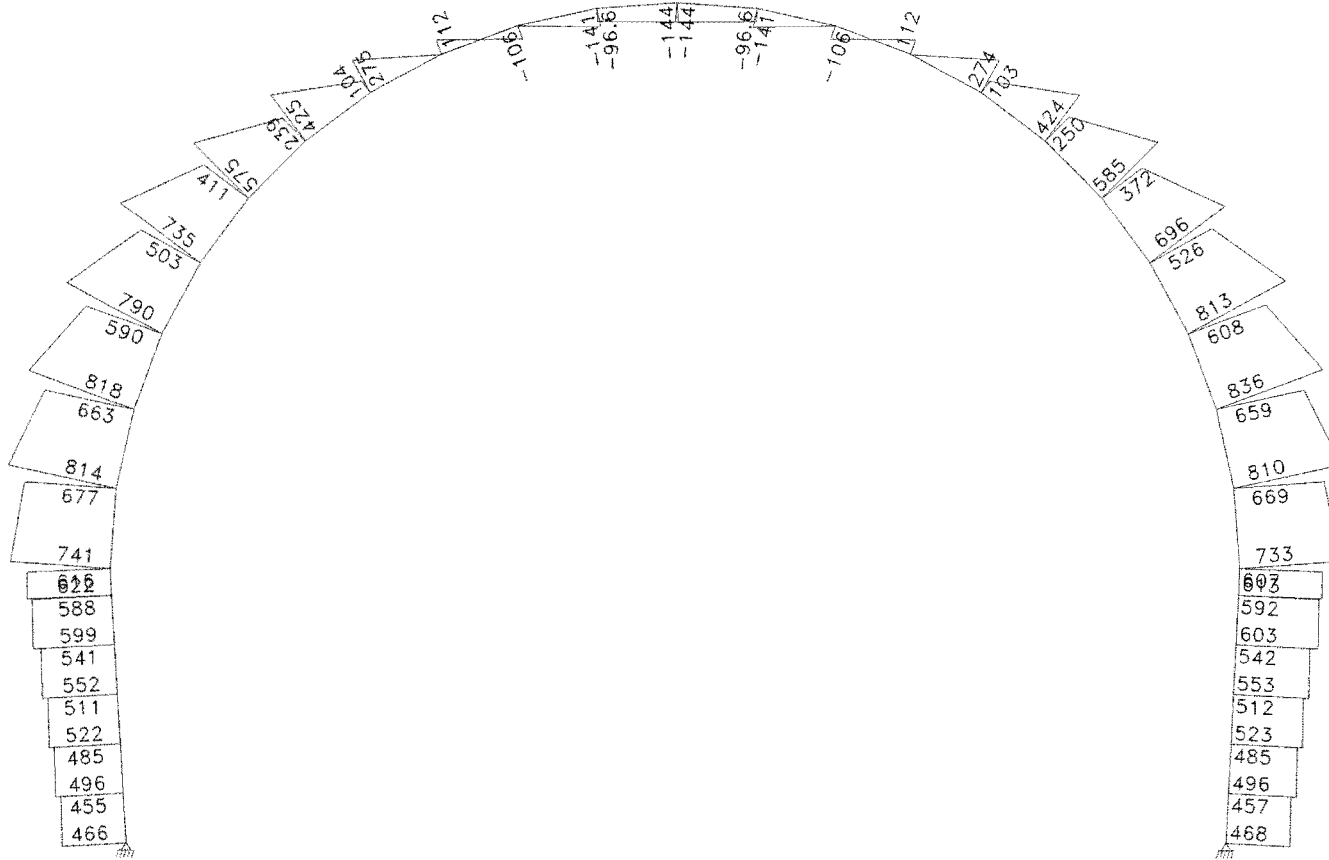
Tnel_0+627m



SCALE = 1:76

UNITS: kN

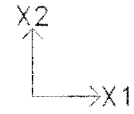
DATE:10-11-11



AXIAL FORCE

COMB. NO. 1 Combinoo ELU1

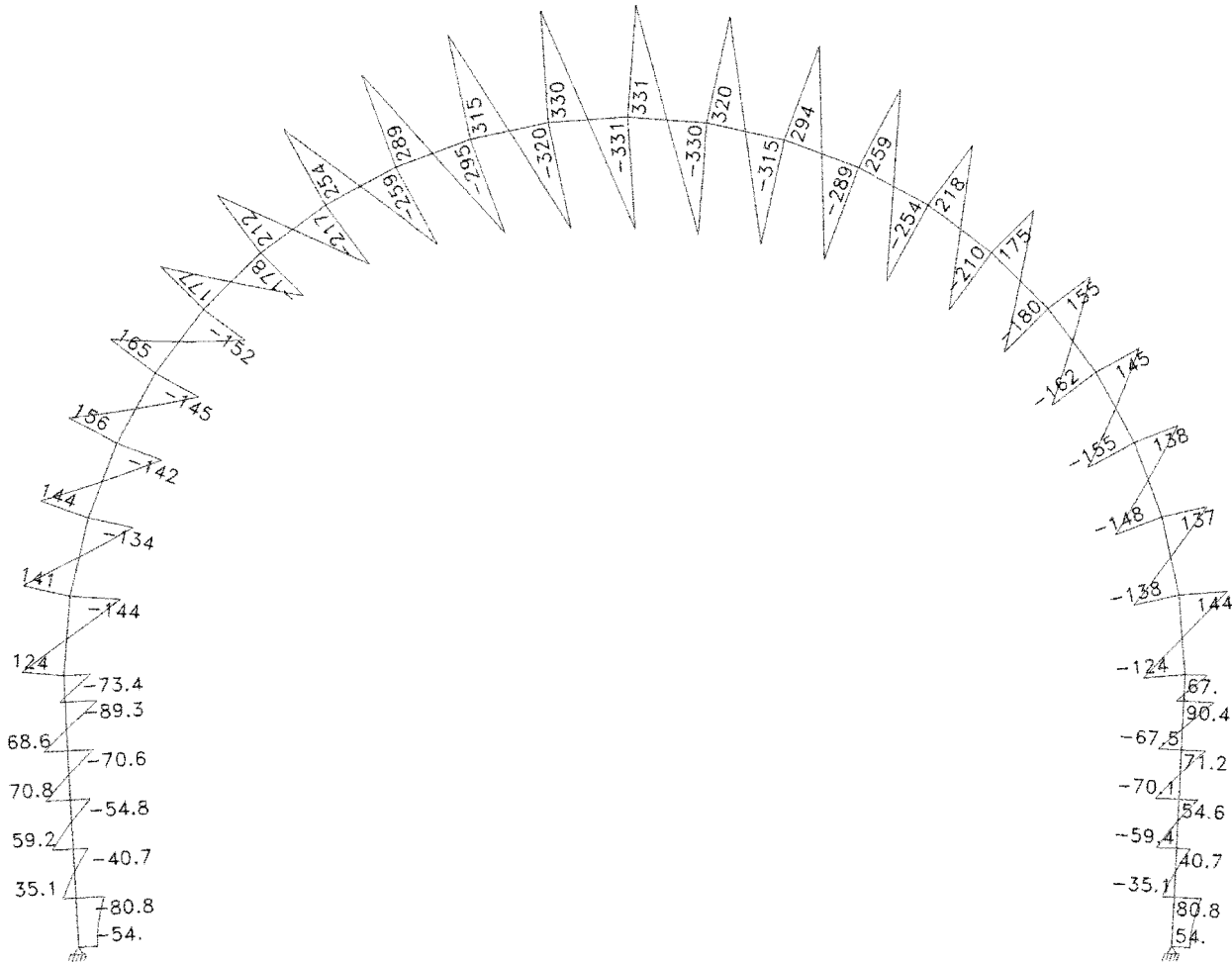
Tnel_0+627m



SCALE = 1:76

UNITS: kN

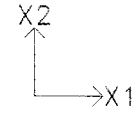
DATE:10-11-11



V2 SHEAR

COMB. NO. 1 Combinac ELU1

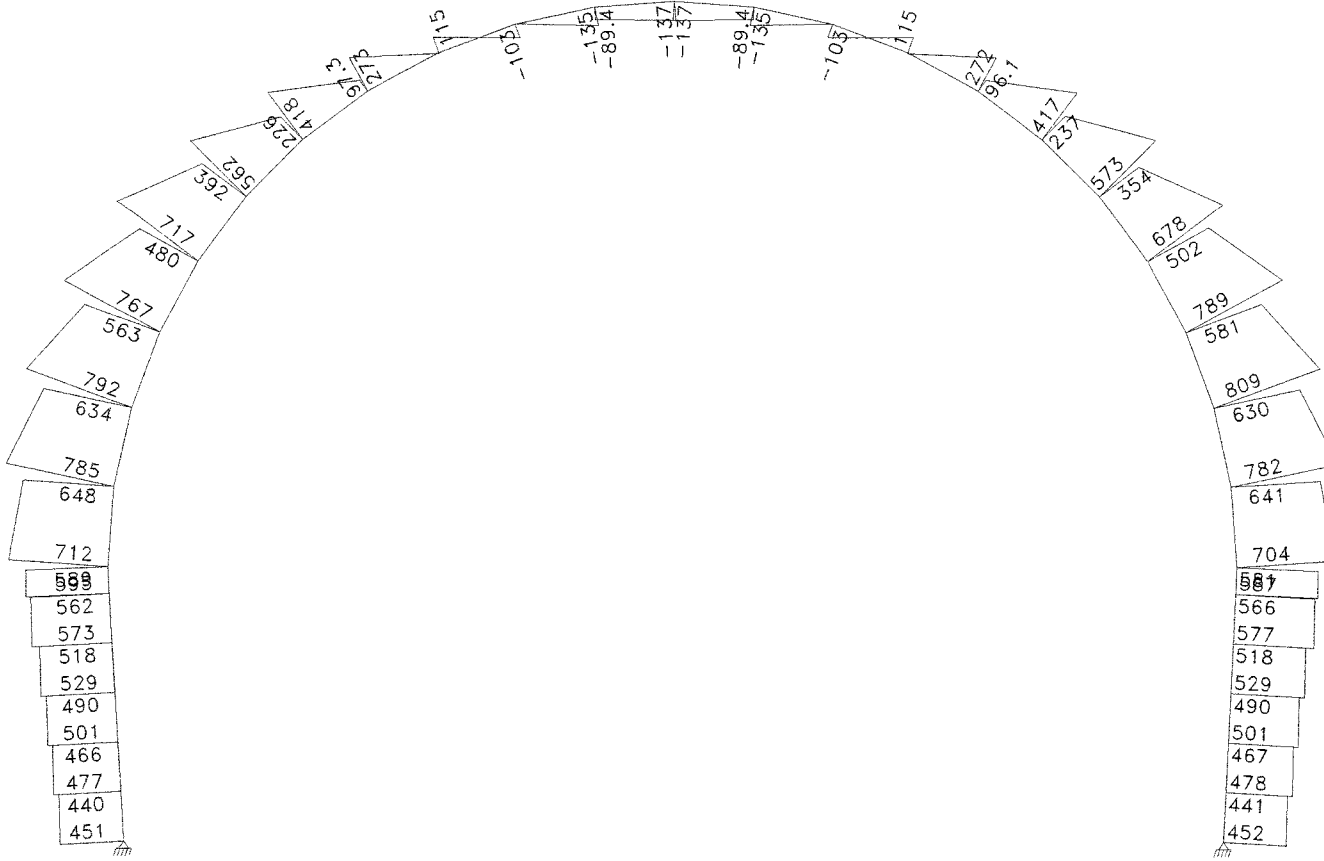
Tnel_0+627m



SCALE = 1:76

UNITS: kN

DATE:10-11-11



AXIAL FORCE

COMB. NO. 2 Combinao ELU2

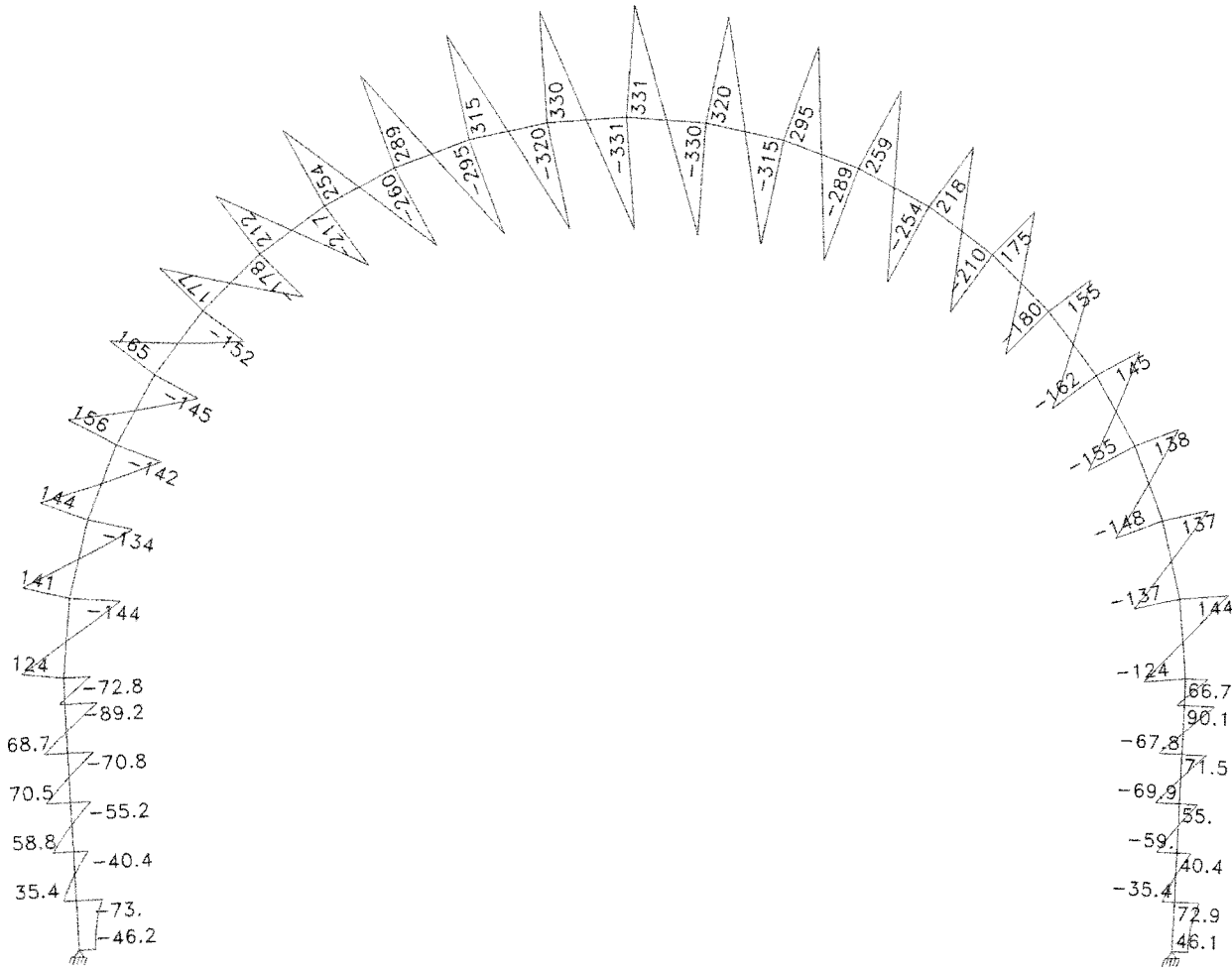
Tnel_0+627m



SCALE = 1:76

UNITS: kN

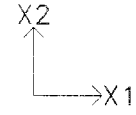
DATE:10-11-11



V2 SHEAR

COMB. NO. 2 Combinao ELU2

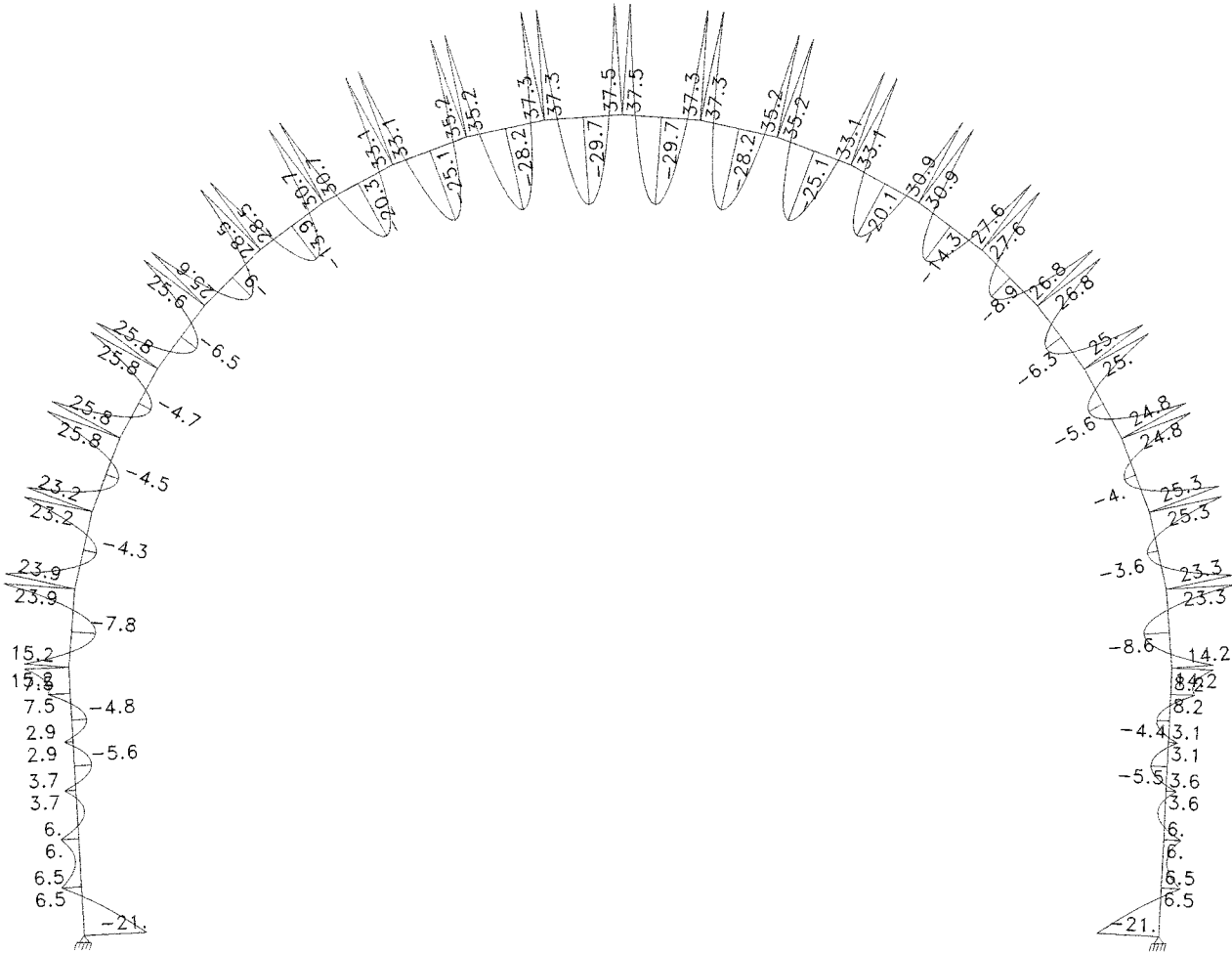
Tnel_0+627m



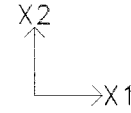
SCALE = 1:76

UNITS: kN*m

DATE:10-11-11



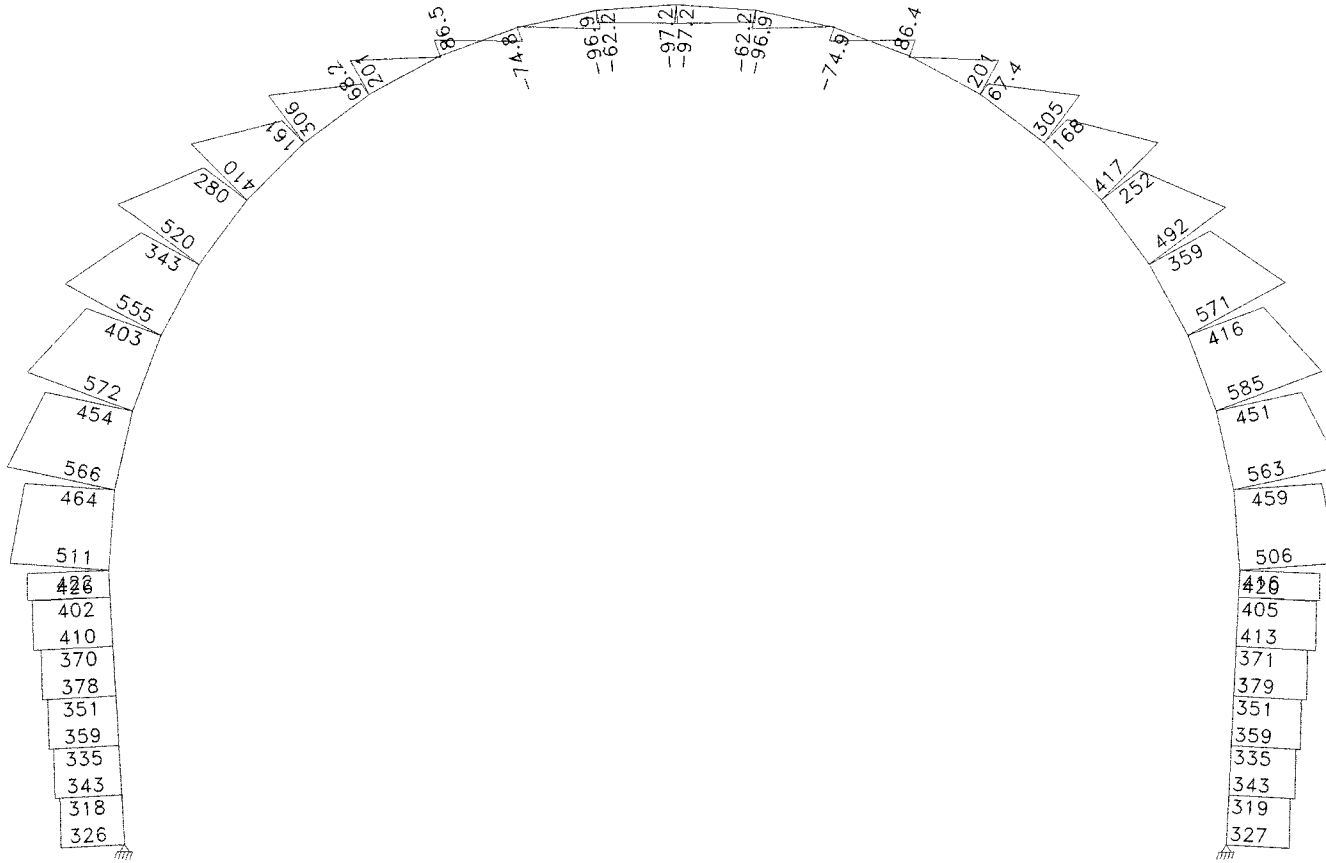
Tnel_0+627m



SCALE = 1:76

UNITS: kN

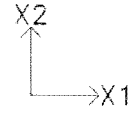
DATE:10-11-11



AXIAL FORCE

COMB. NO. 3 Combinao FREQUENTE1

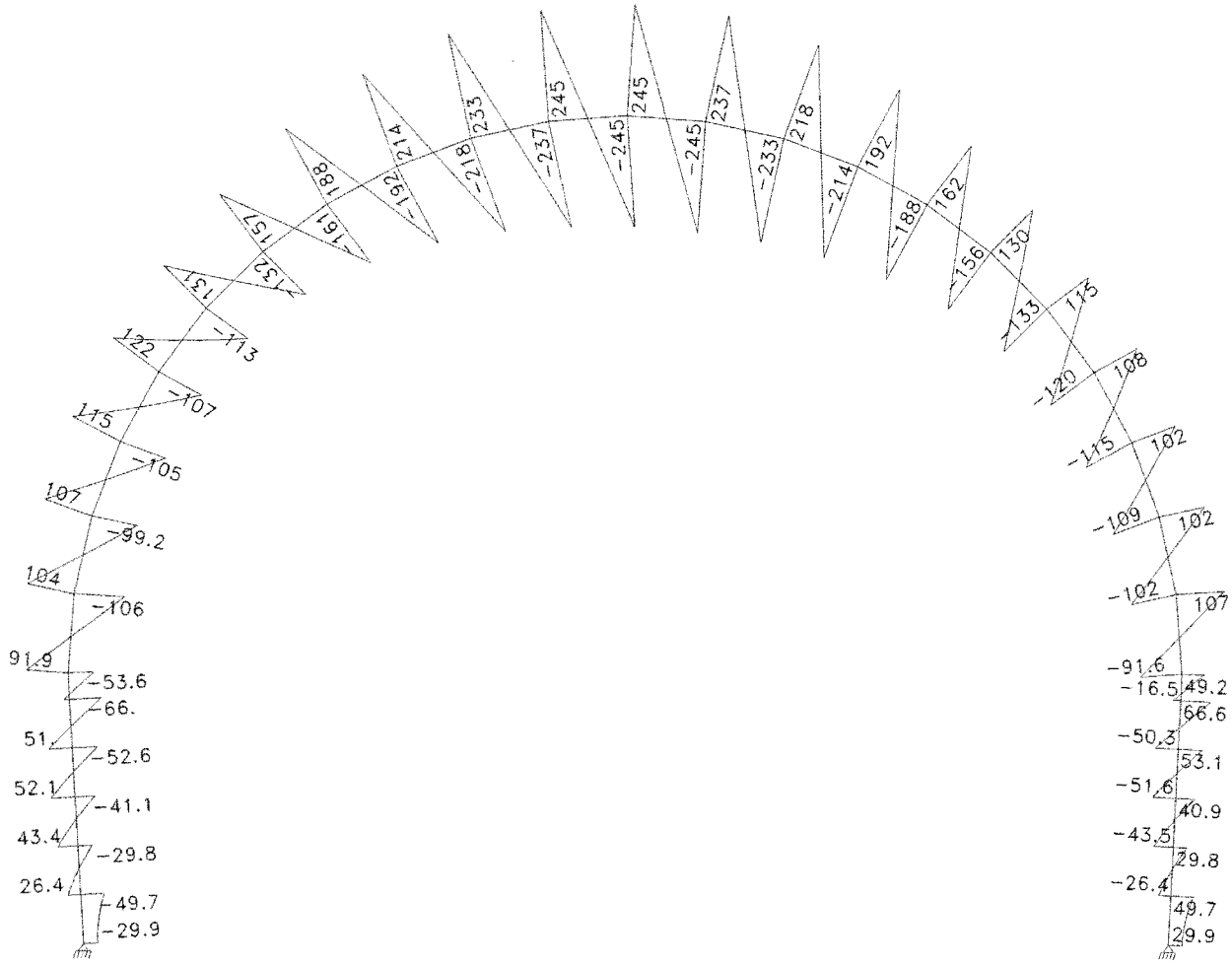
Tnel_0+627m



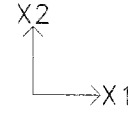
SCALE = 1:76

UNITS: kN

DATE:10-11-11



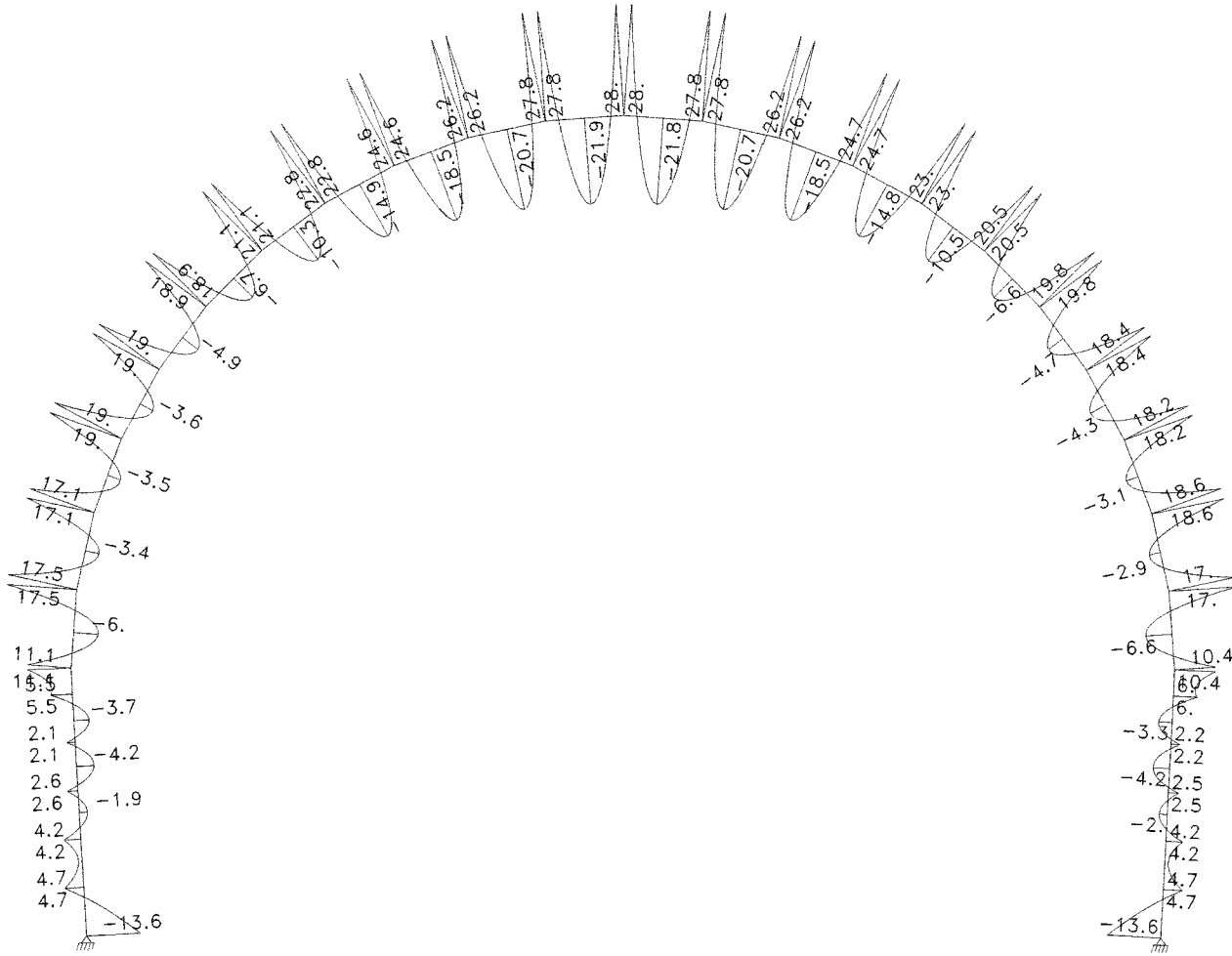
Tnel_0+627m



SCALE = 1:76

UNITS: kN*m

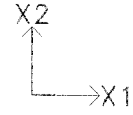
DATE:10-11-11



M3 MOMENT

COMB. NO. 3 Combinacão FREQUENTE1

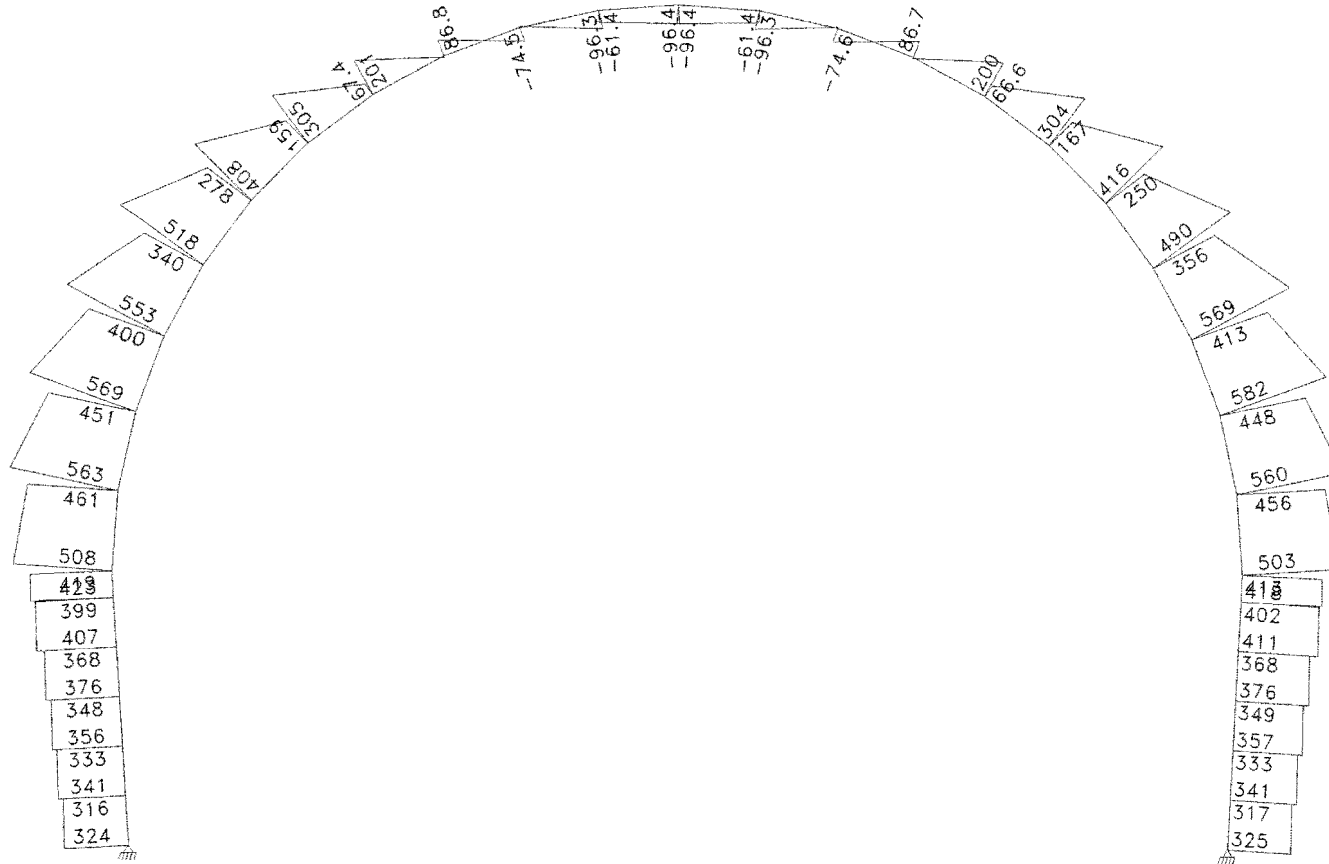
Tnel_0+627m



SCALE = 1:76

UNITS: kN

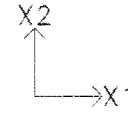
DATE:10-11-11



AXIAL FORCE

COMB. NO. 4 Combinoo FREQUENTE2

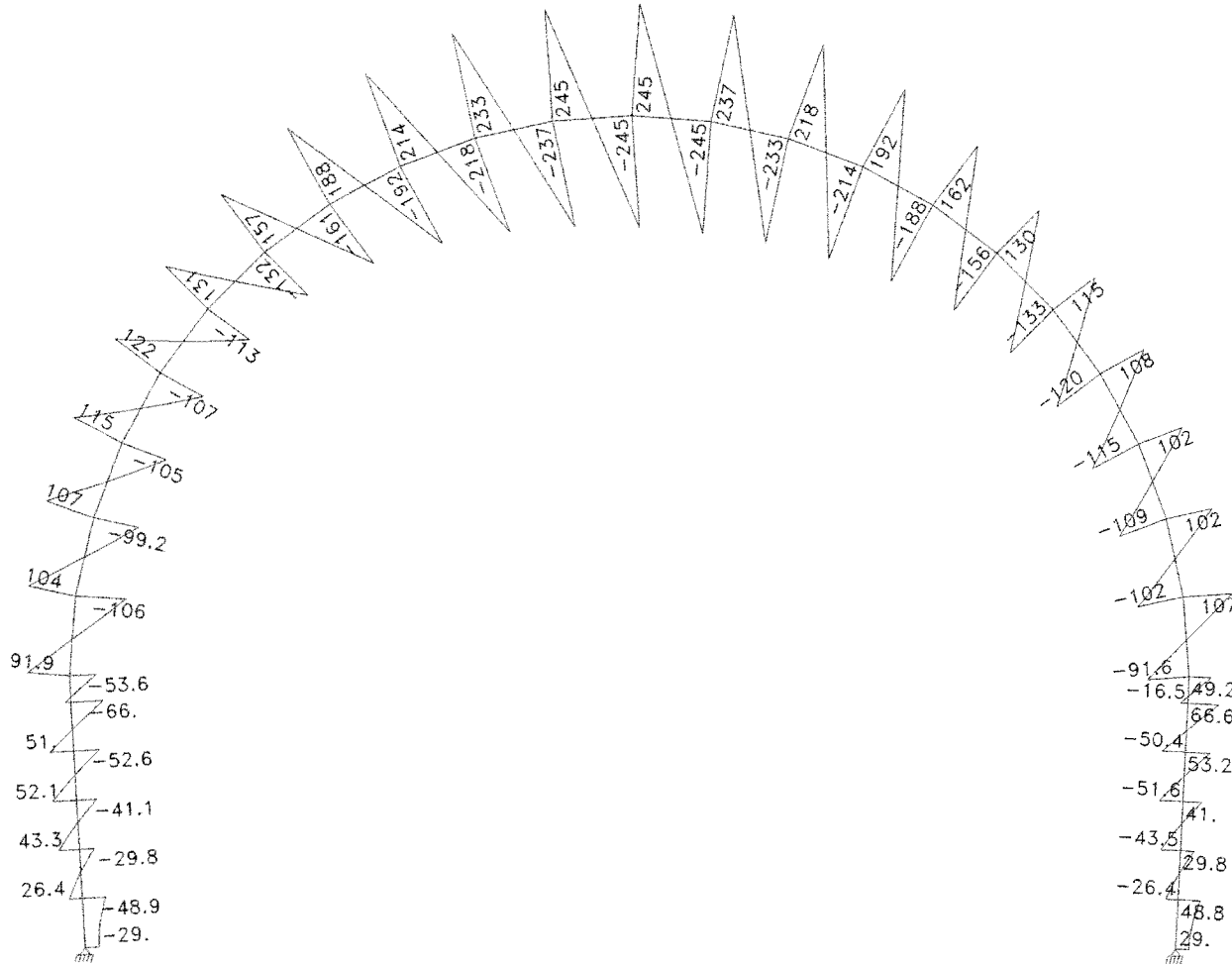
Tnel_0+627m



SCALE = 1:76

UNITS: kN

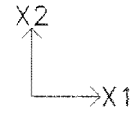
DATE:10-11-11



V2 SHEAR

COMB. NO. 4 Combinao FREQUENTE2

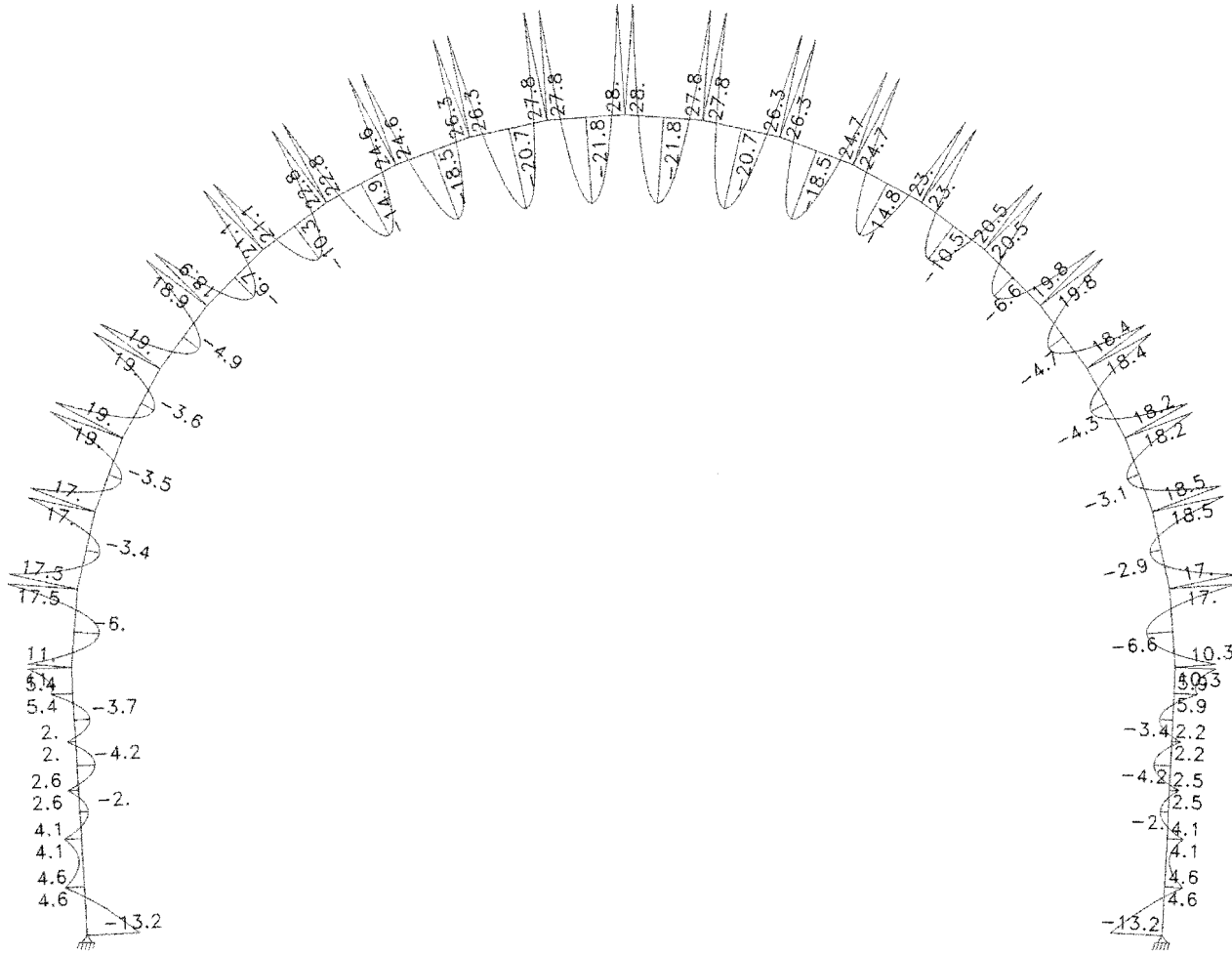
Tnel_0+627m



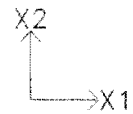
SCALE = 1:76

UNITS: kN*m

DATE:10-11-11



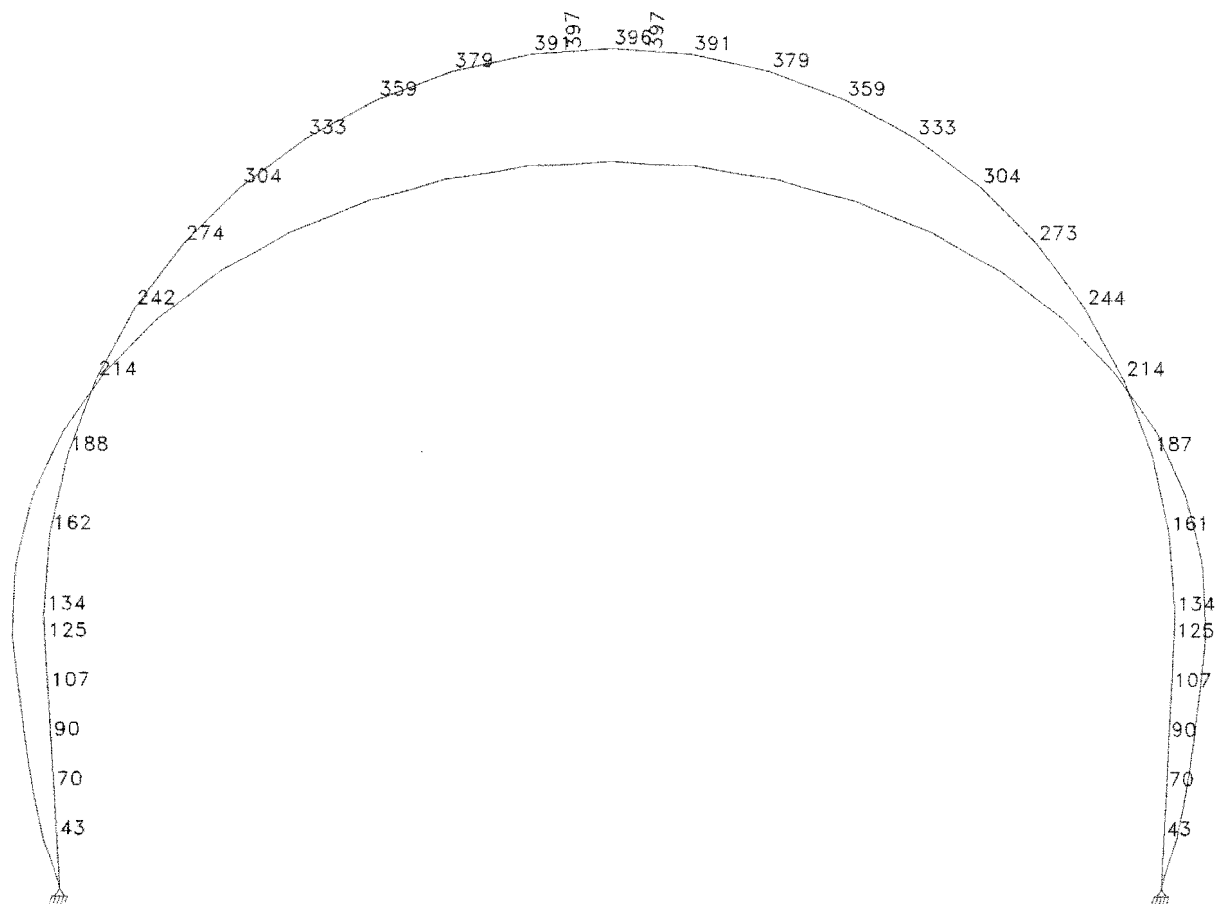
Tnel_0+627m



SCALE = 1:76

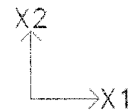
UNITS: meter

DATE:10-11-11



VALUES ARE * 10⁻⁶
DISPLACEMENTS LOAD NO. 1 P.P.Gran

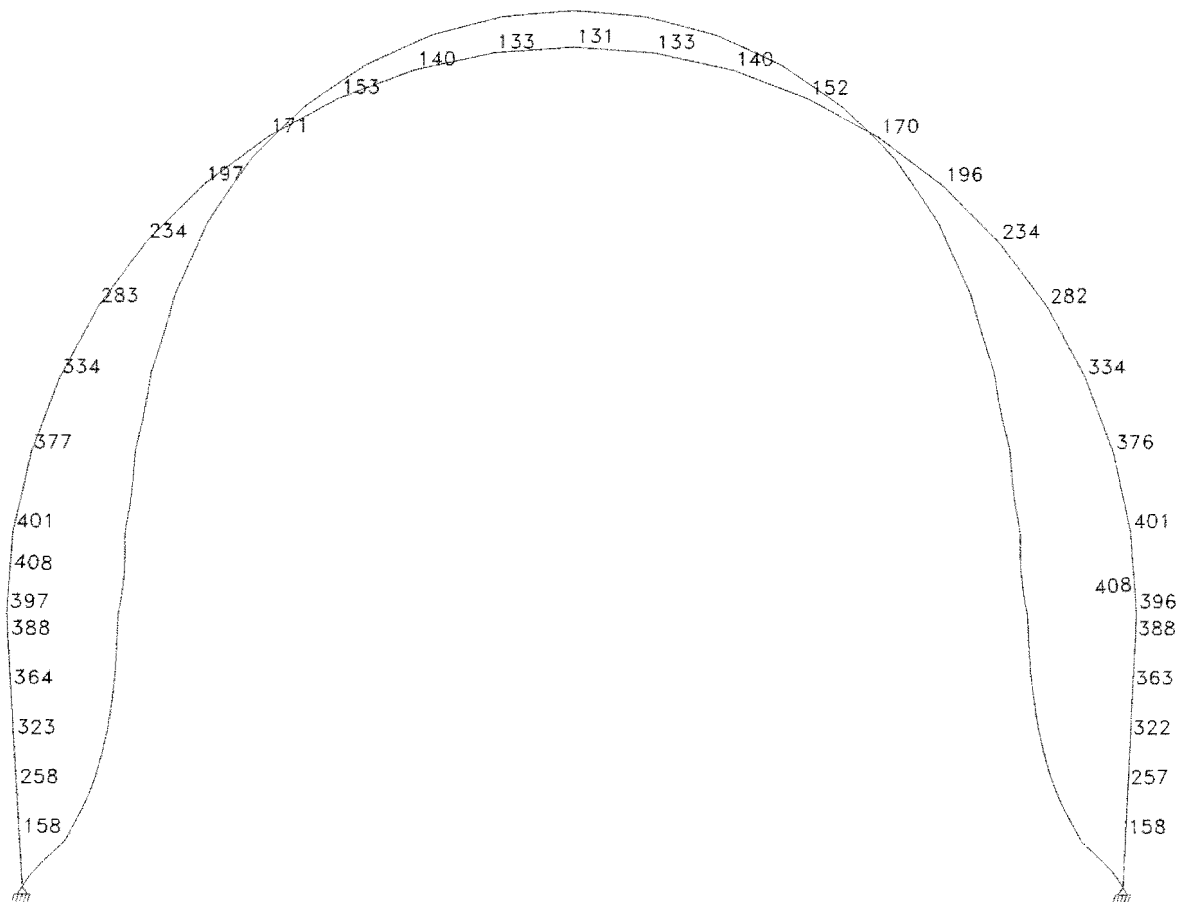
Tnel_0+627m



SCALE = 1:76

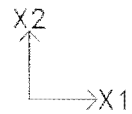
UNITS: meter

DATE:10-11-11



VALUES ARE * 10⁻⁹
DISPLACEMENTS LOAD NO. 2 Carga Unitria Horizontal

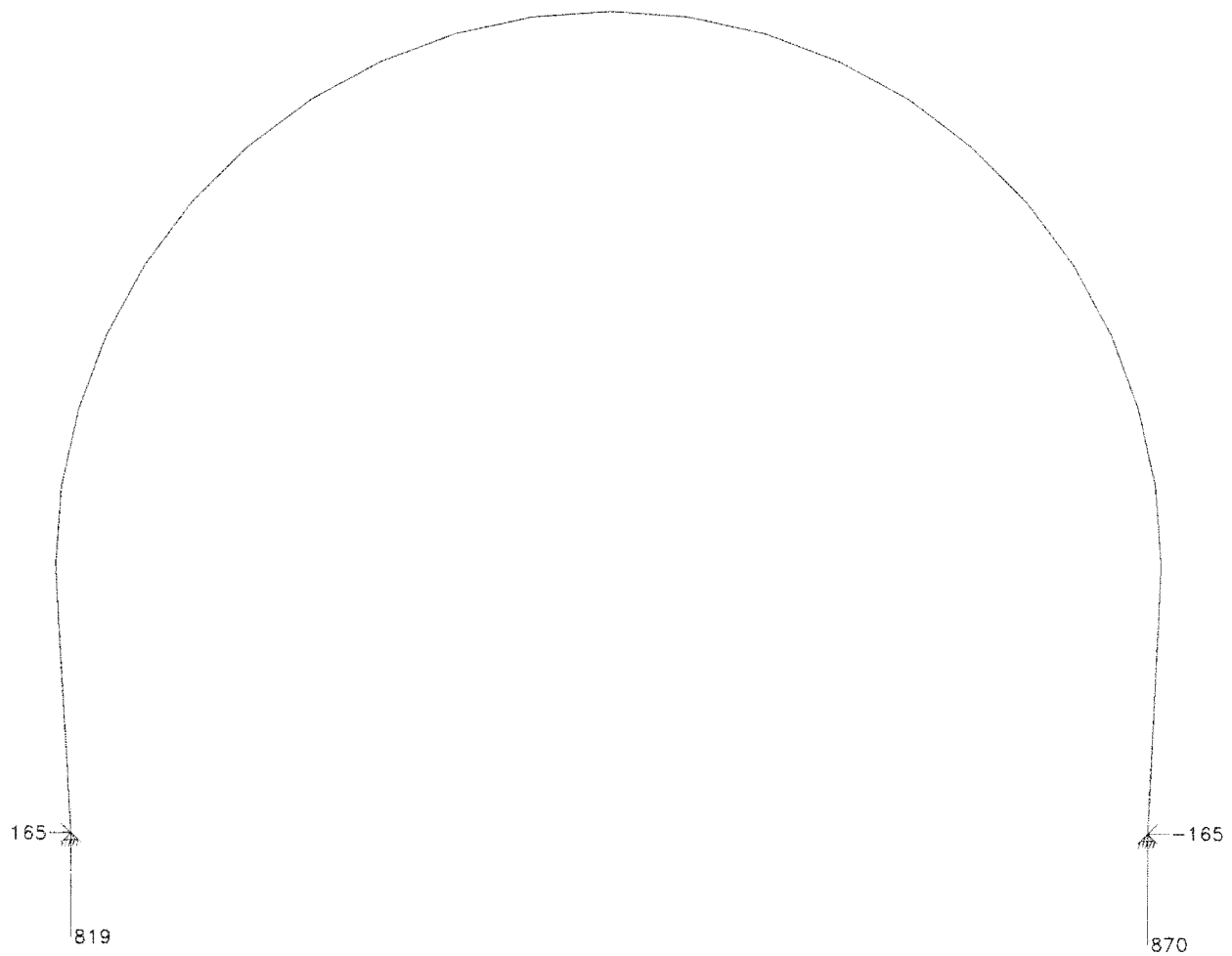
Tnel_0+627m



SCALE = 1:76

UNITS: kN

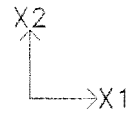
DATE:10-11-11



REACTIONS

COMB. NO. 1 Combinao ELU1

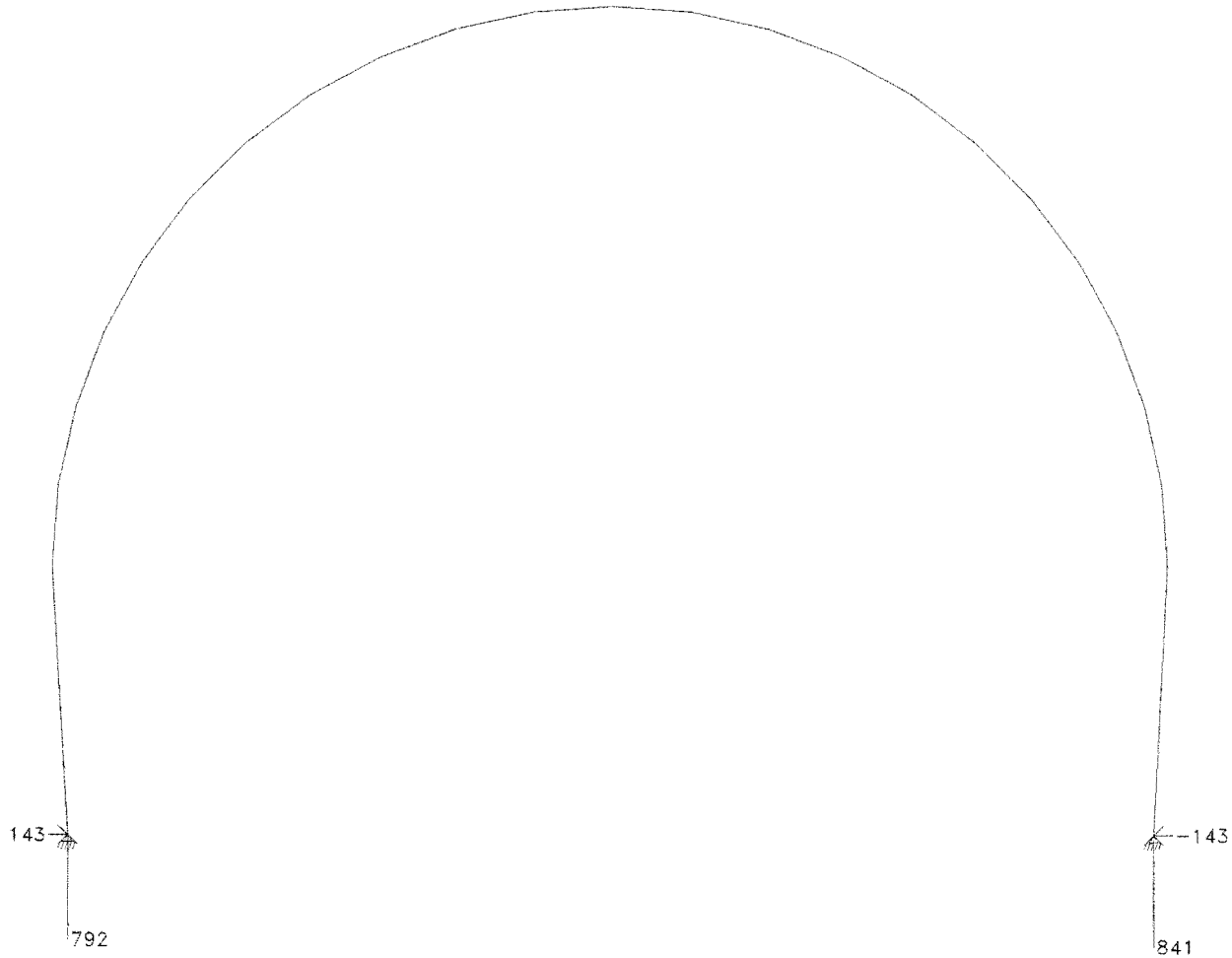
Tnel_0+627m



SCALE = 1:76

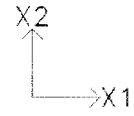
UNITS: kN

DATE:10-11-11



REACTIONS COMB. NO. 2 Combinao ELU2

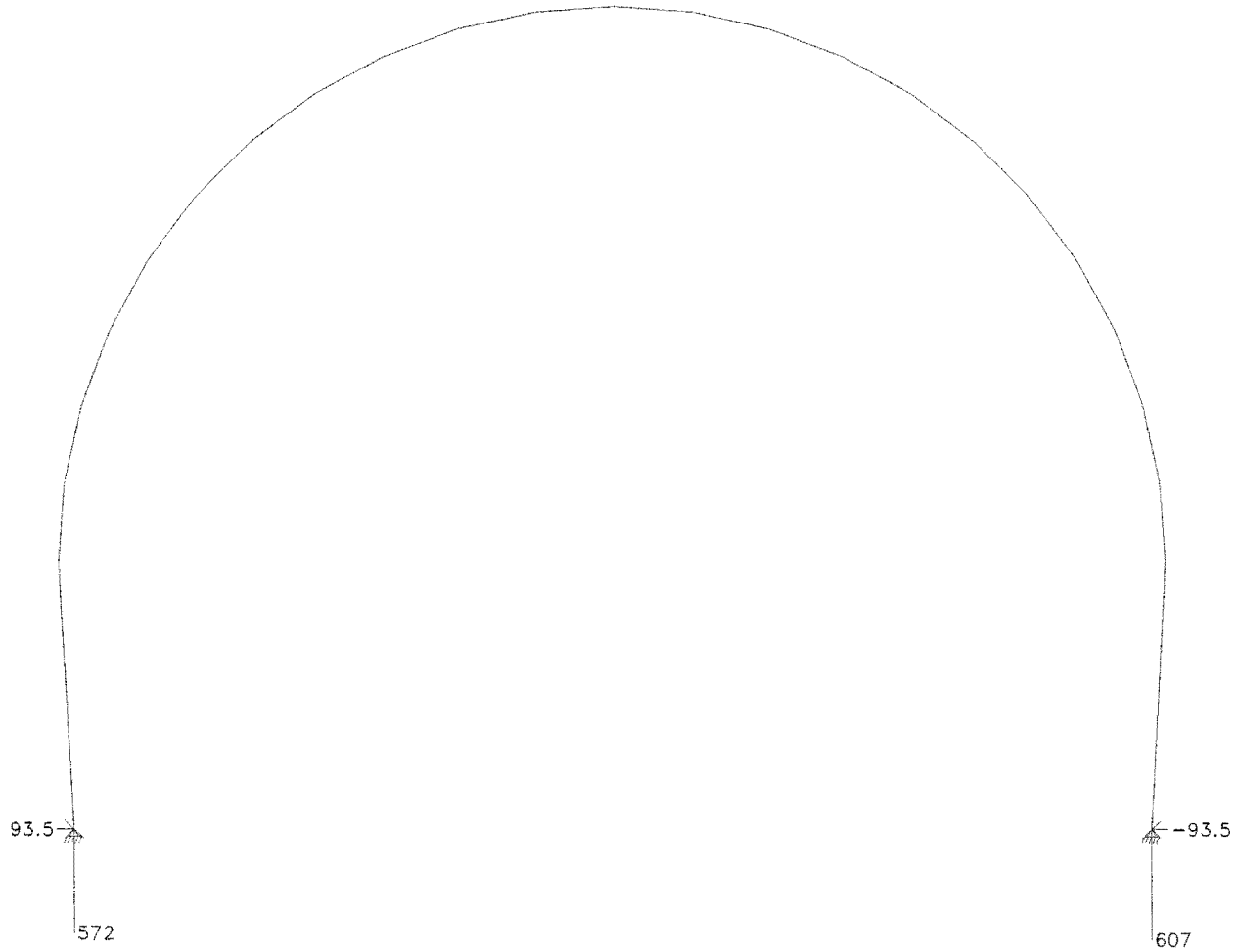
Tnel_0+627m



SCALE = 1:76

UNITS: kN

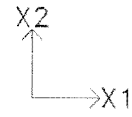
DATE:10-11-11



REACTIONS

COMB. NO. 3 Combinao FREQUENTE1

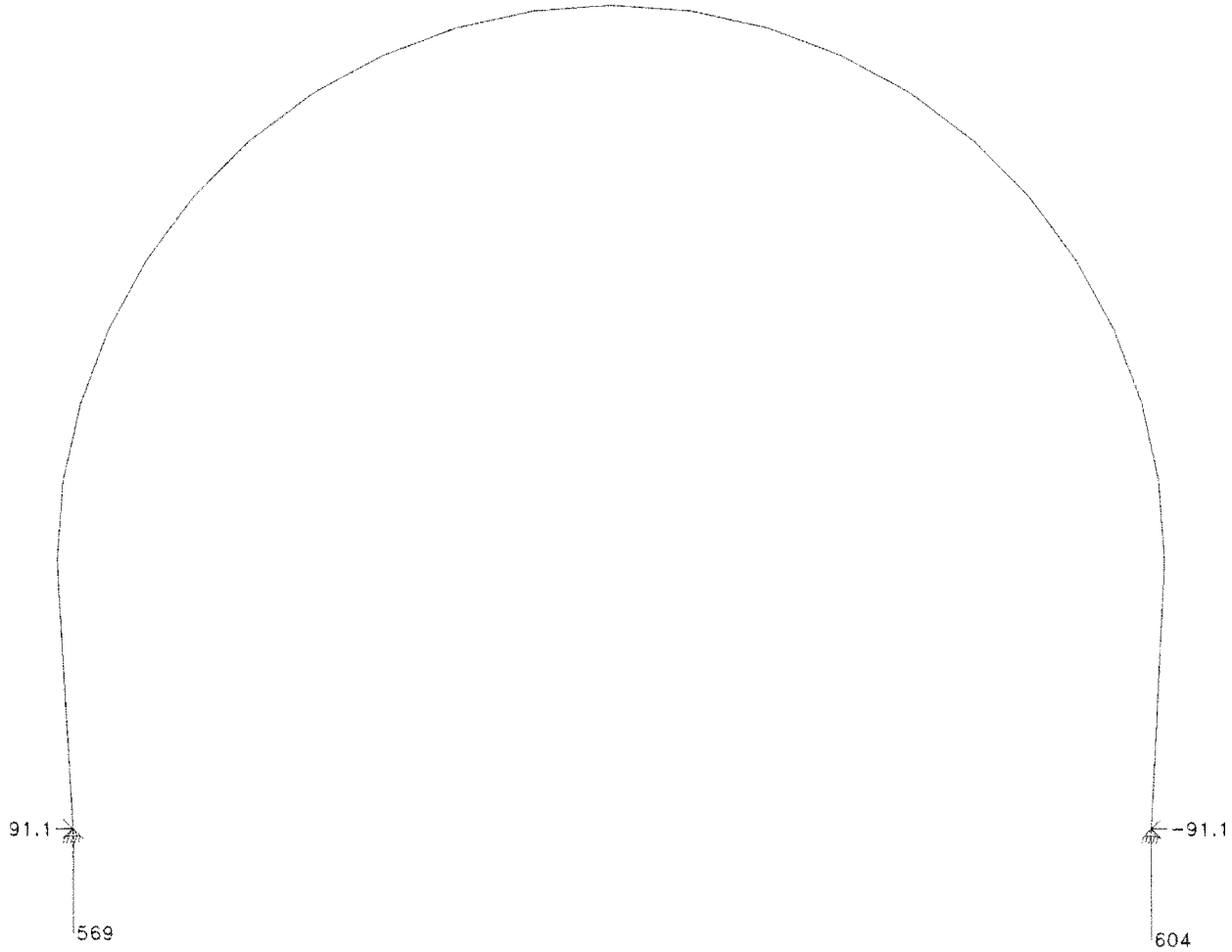
Tnel_0+627m



SCALE = 1:76

UNITS: kN

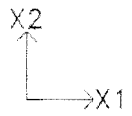
DATE:10-11-11



REACTIONS

COMB. NO. 4 Combinao FREQUENTE2

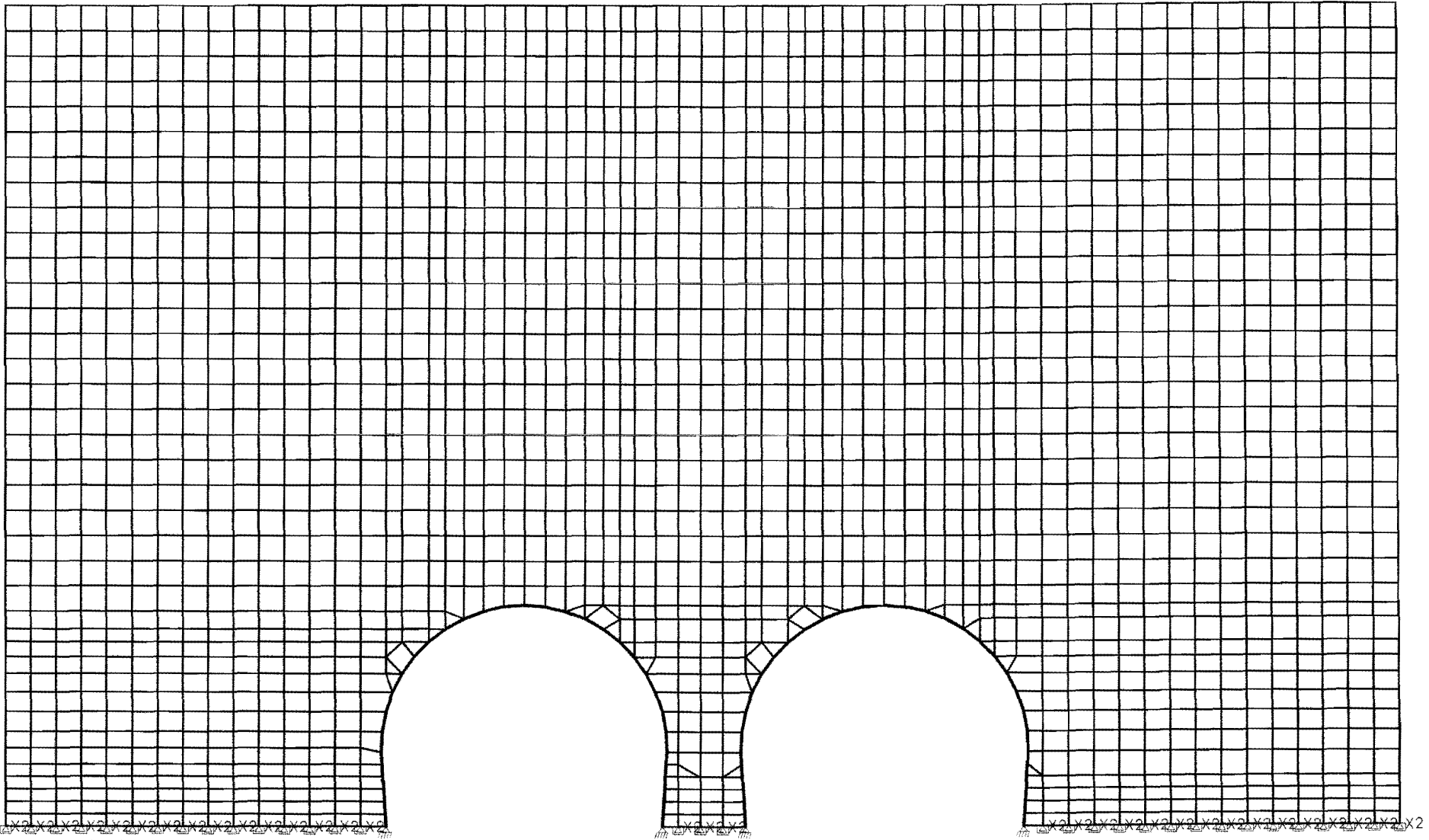
Tnel_0+668m



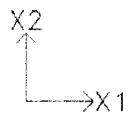
SCALE = 1:230

UNITS: kN m

DATE:10-11-11



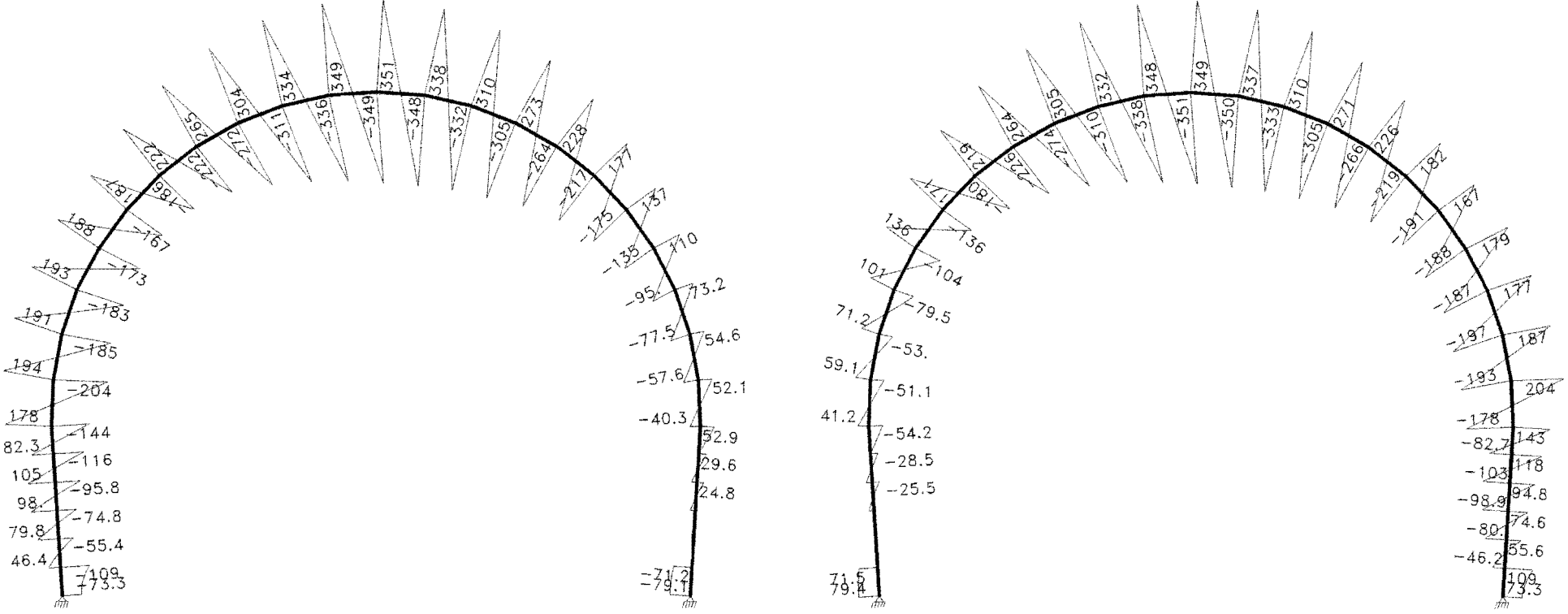
GEOMETRY

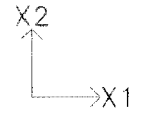


SCALE = 1:108

UNITS: kN

DATE:10-11-11

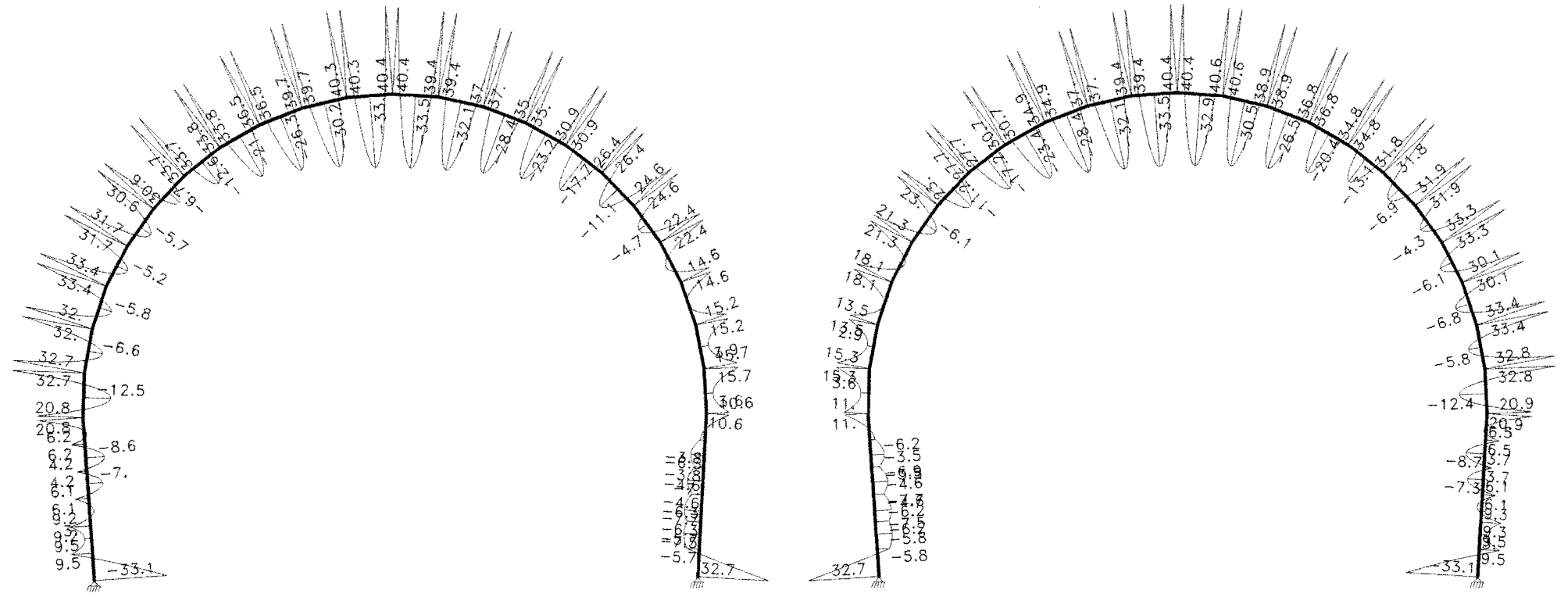




SCALE = 1:108

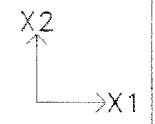
UNITS: kN*m

DATE:10-11-11



M3 MOMENT

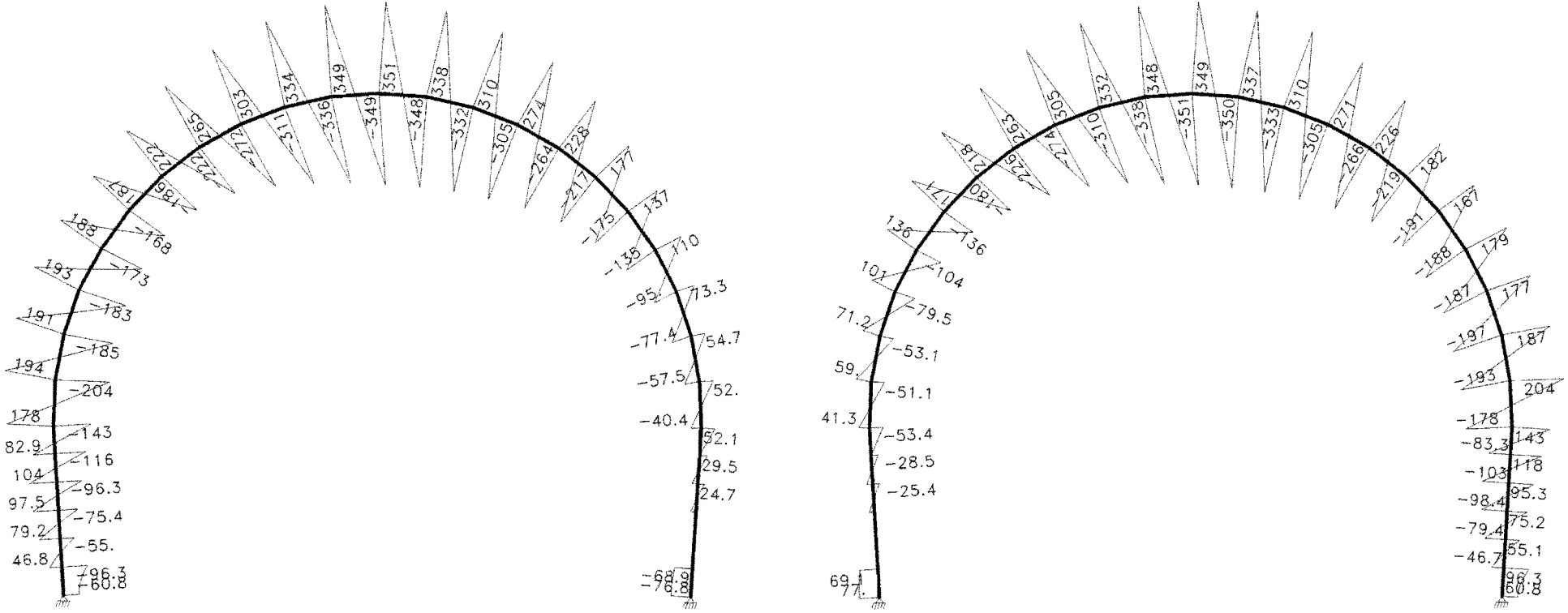
COMB. NO. 1 Combinoo ELU1

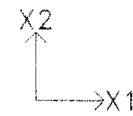


SCALE = 1:108

UNITS: kN

DATE:10-11-11

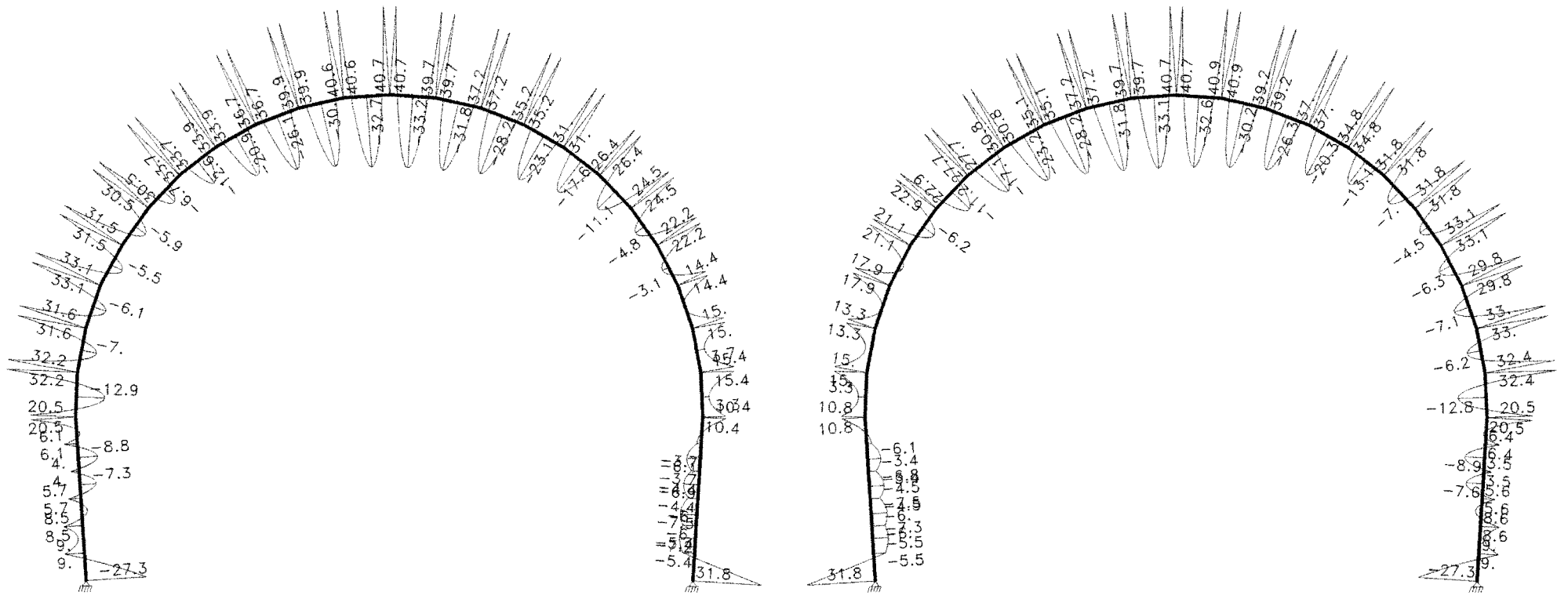




SCALE = 1:108

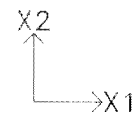
UNITS: kN*m

DATE:10-11-11



M3 MOMENT

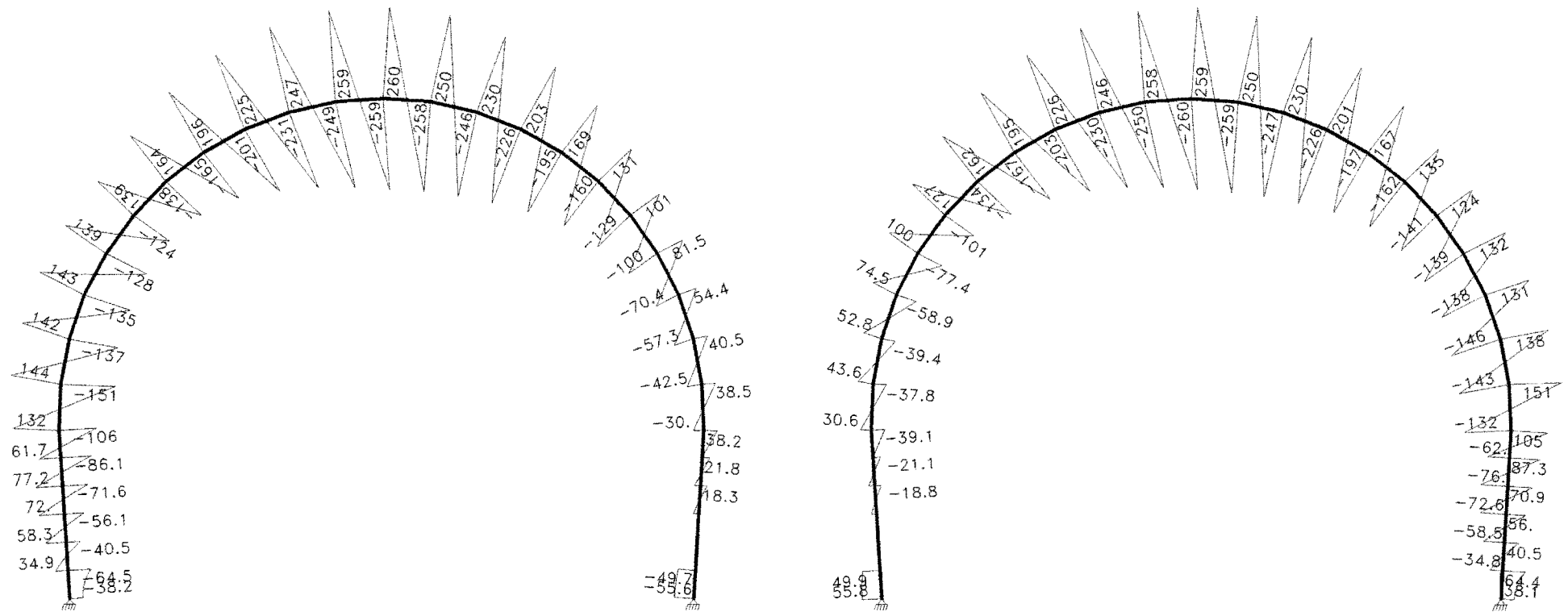
COMB. NO. 2 Combinacão ELU2

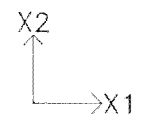


SCALE = 1:108

UNITS: kN

DATE:10-11-11

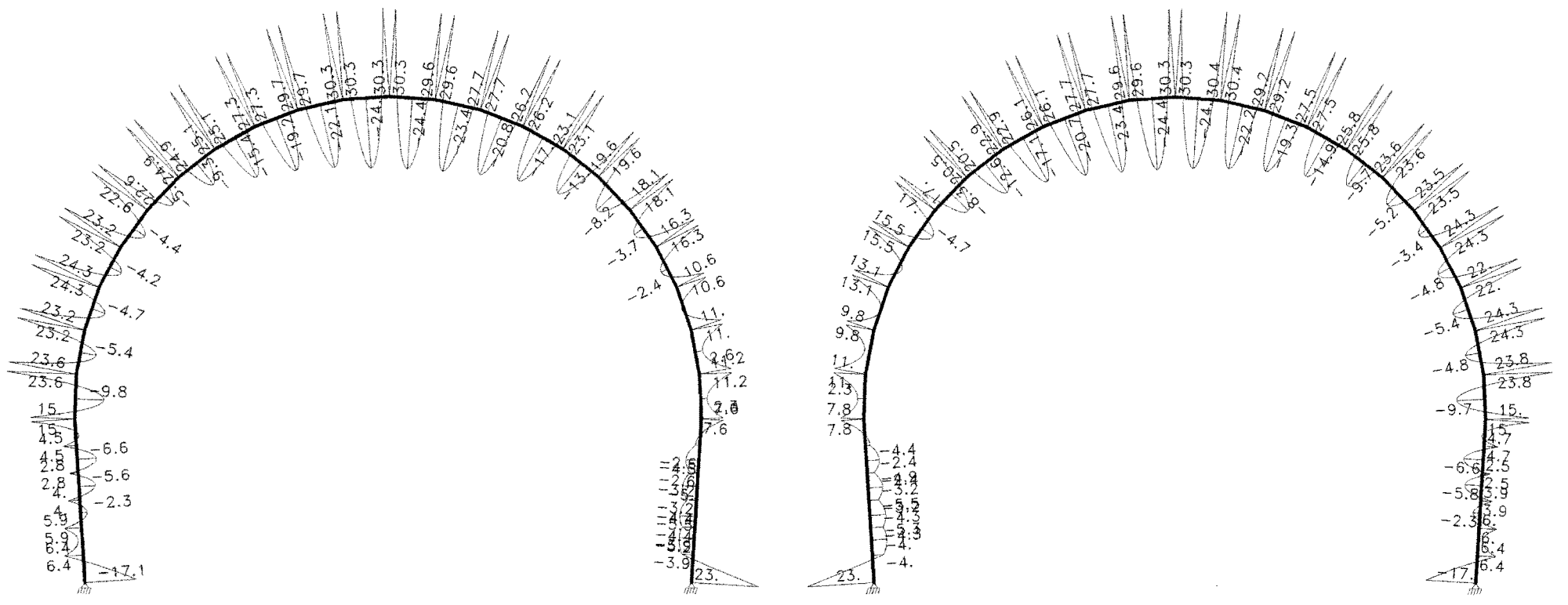


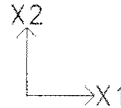


SCALE = 1:108

UNITS: kN*m

DATE:10-11-11

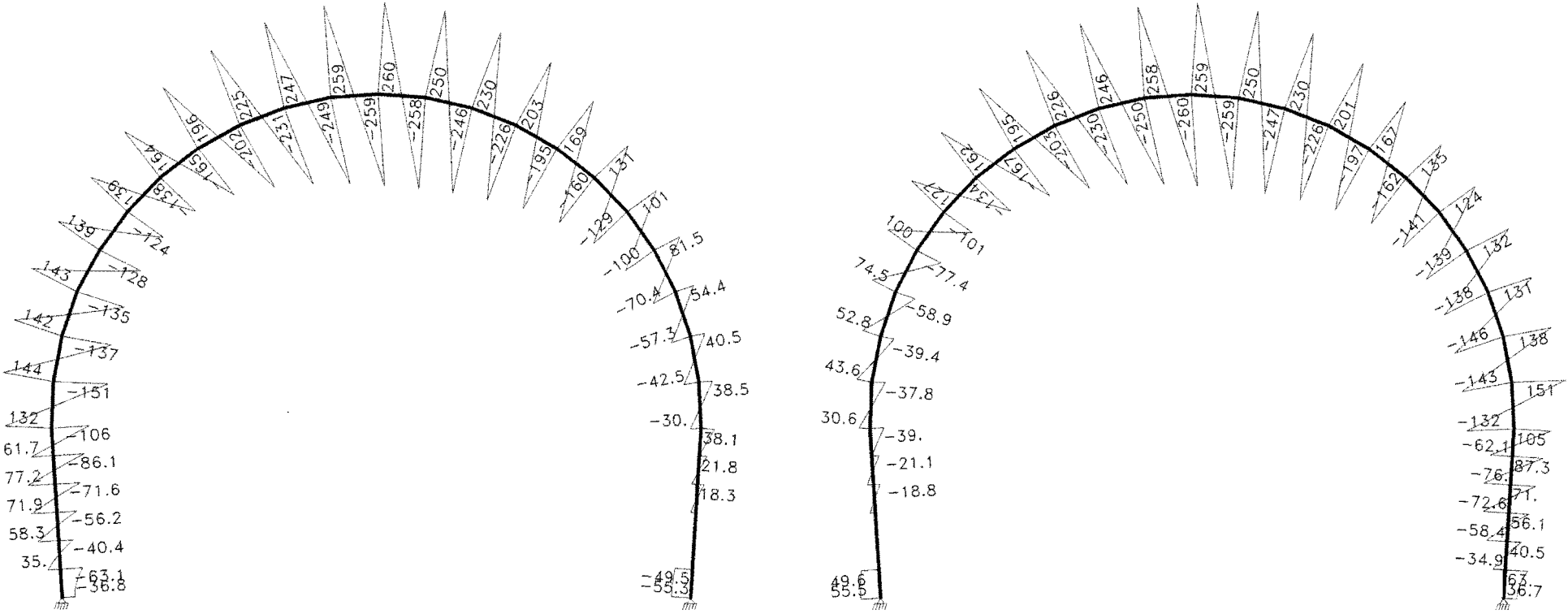


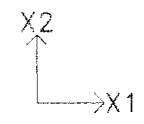


SCALE = 1:108

UNITS: kN

DATE:10-11-11

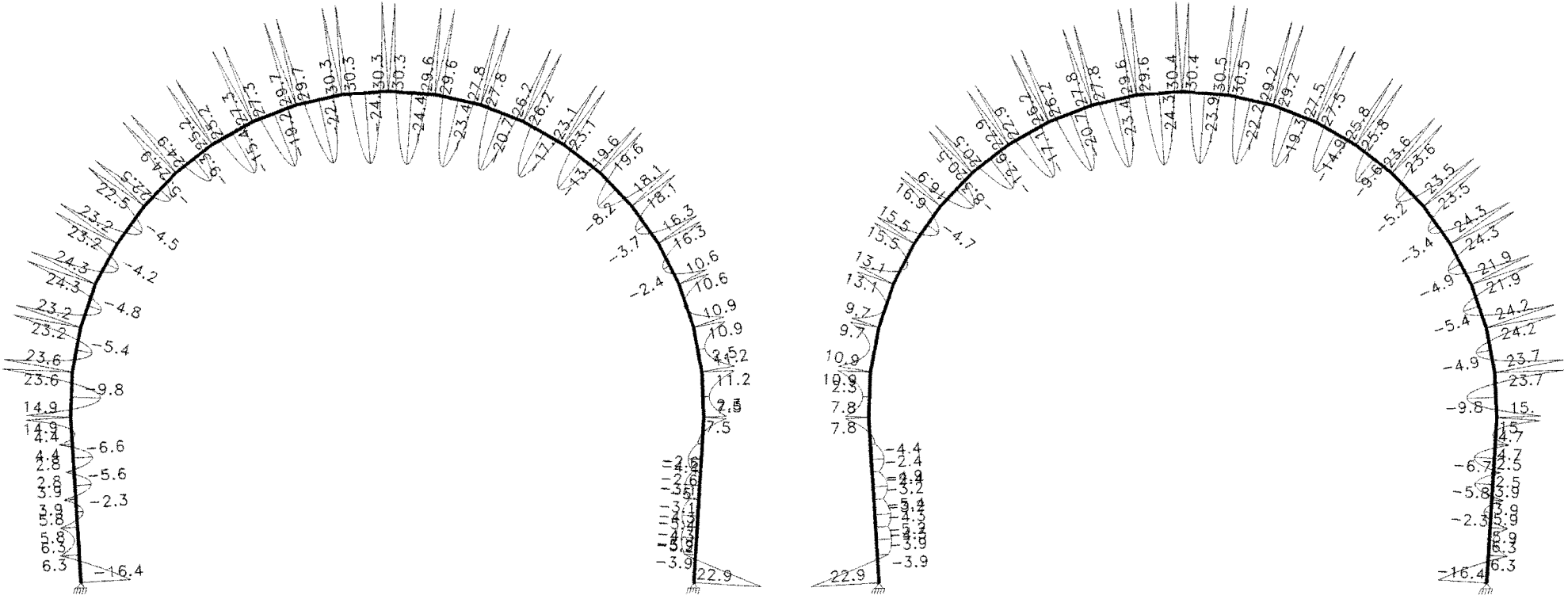


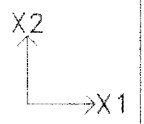


SCALE = 1:108

UNITS: kN*m

DATE:10-11-11

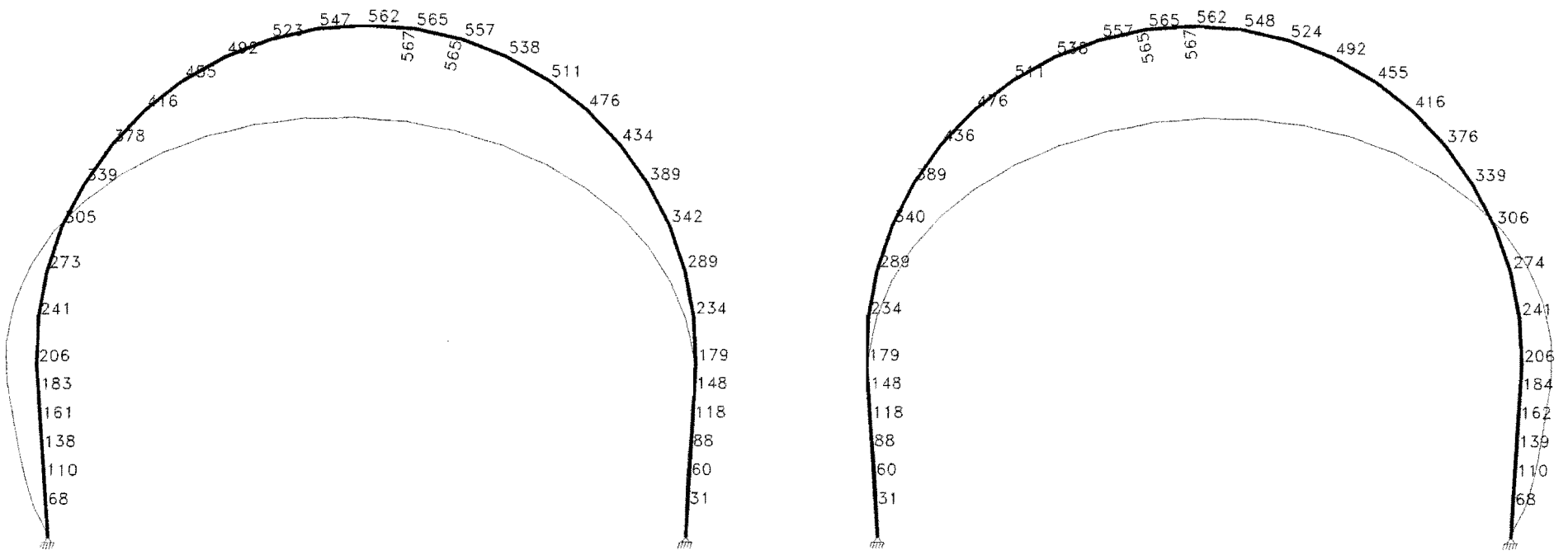




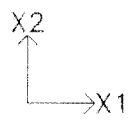
SCALE = 1:108

UNITS: meter

DATE:10-11-11



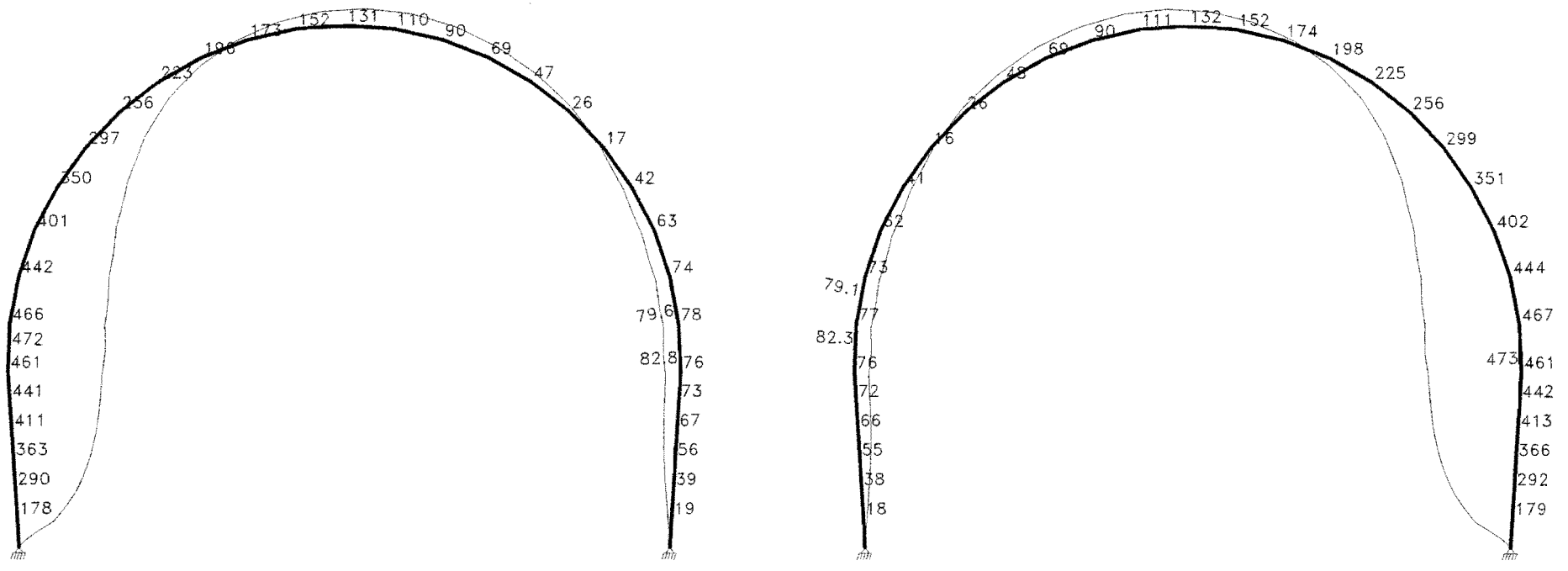
VALUES ARE * 10^-6
DISPLACEMENTS LOAD NO. 2 P.P.Granito



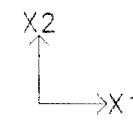
SCALE = 1:108

UNITS: meter

DATE:10-11-11



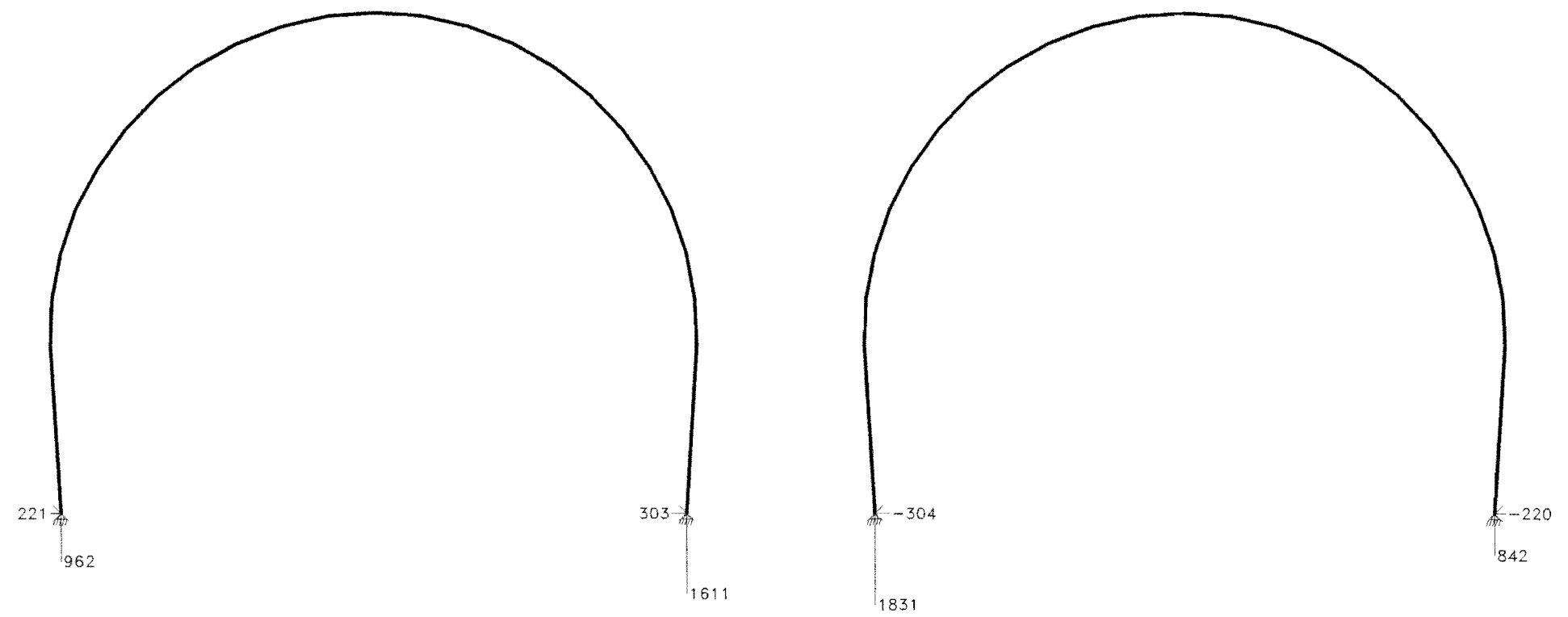
VALUES ARE * 10⁻⁹
DISPLACEMENTS LOAD NO. 3 Acc Horizontal Unitria



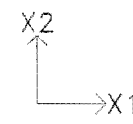
SCALE = 1:108

UNITS: kN

DATE:10-11-11



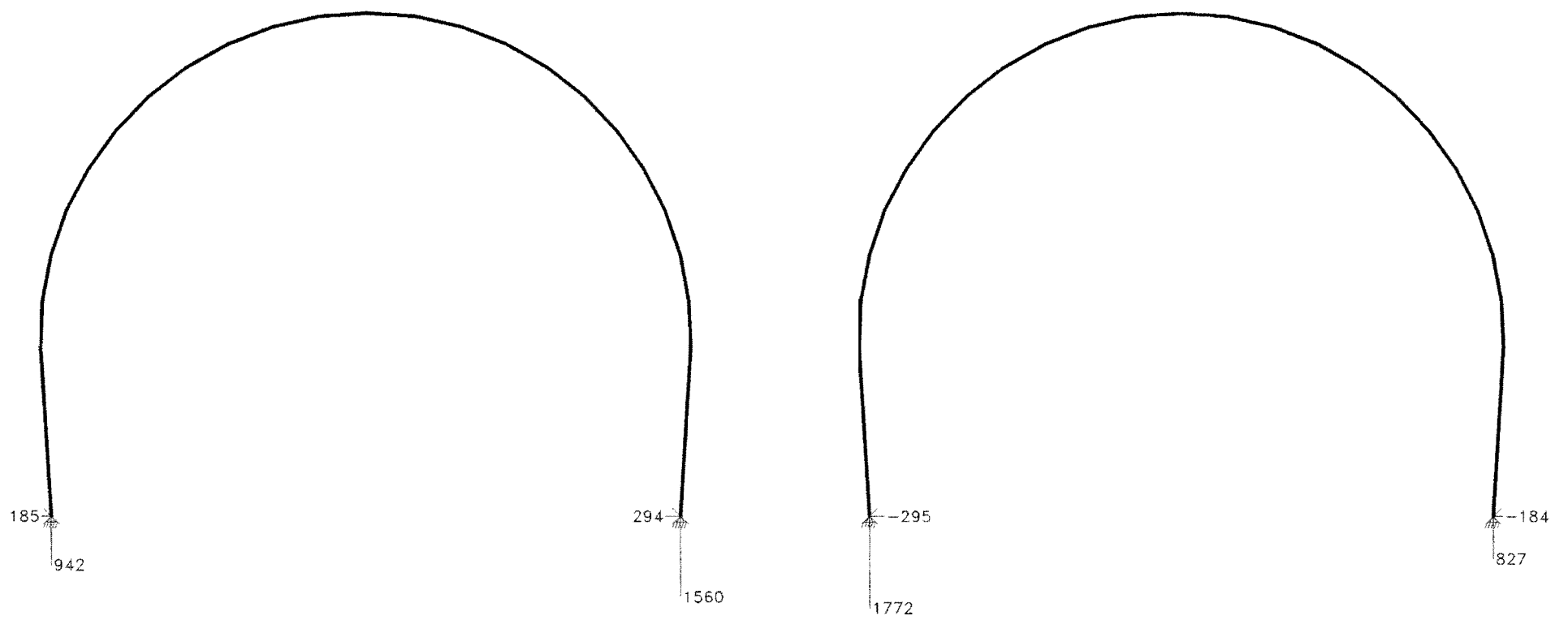
REACTIONS COMB. NO. 1 Combinao ELU1



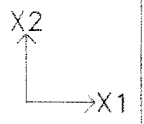
SCALE = 1:108

UNITS: kN

DATE:10-11-11



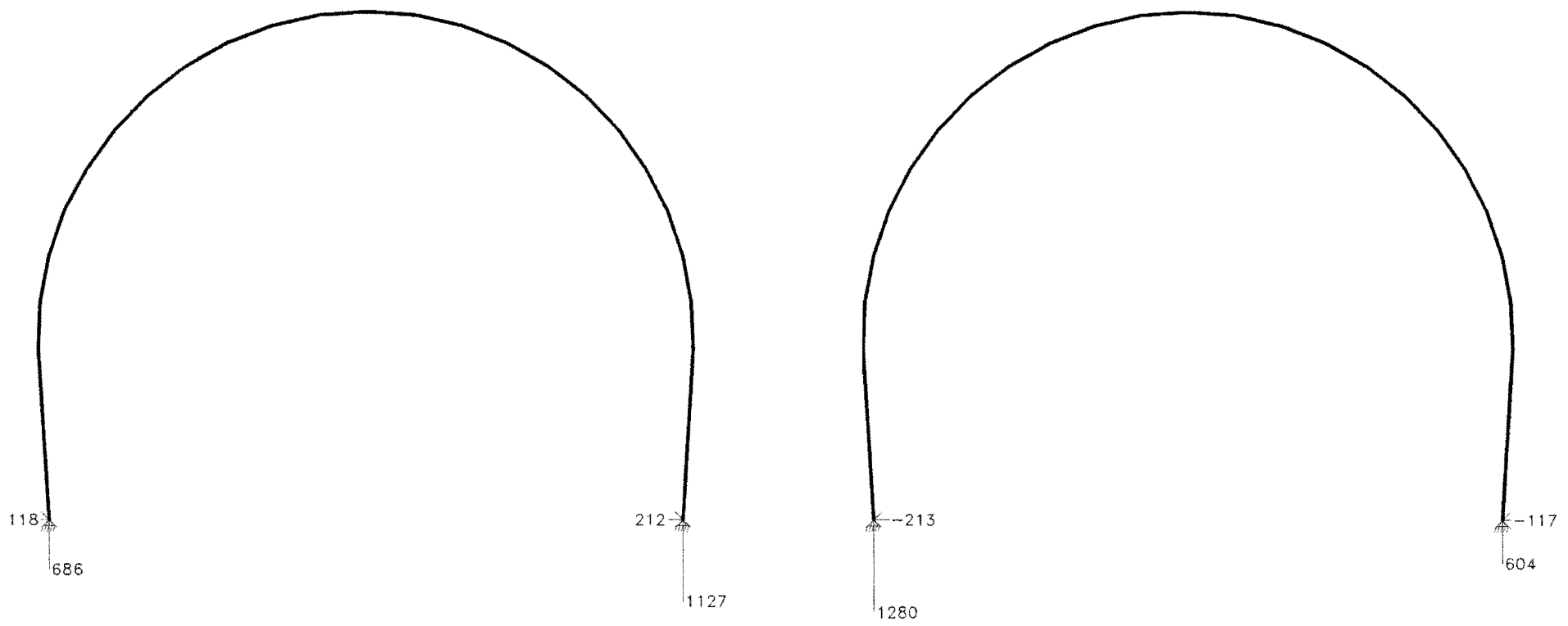
REACTIONS COMB. NO. 2 Combinac ELU2



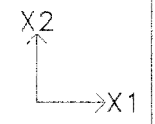
SCALE = 1:108

UNITS: kN

DATE:10-11-11



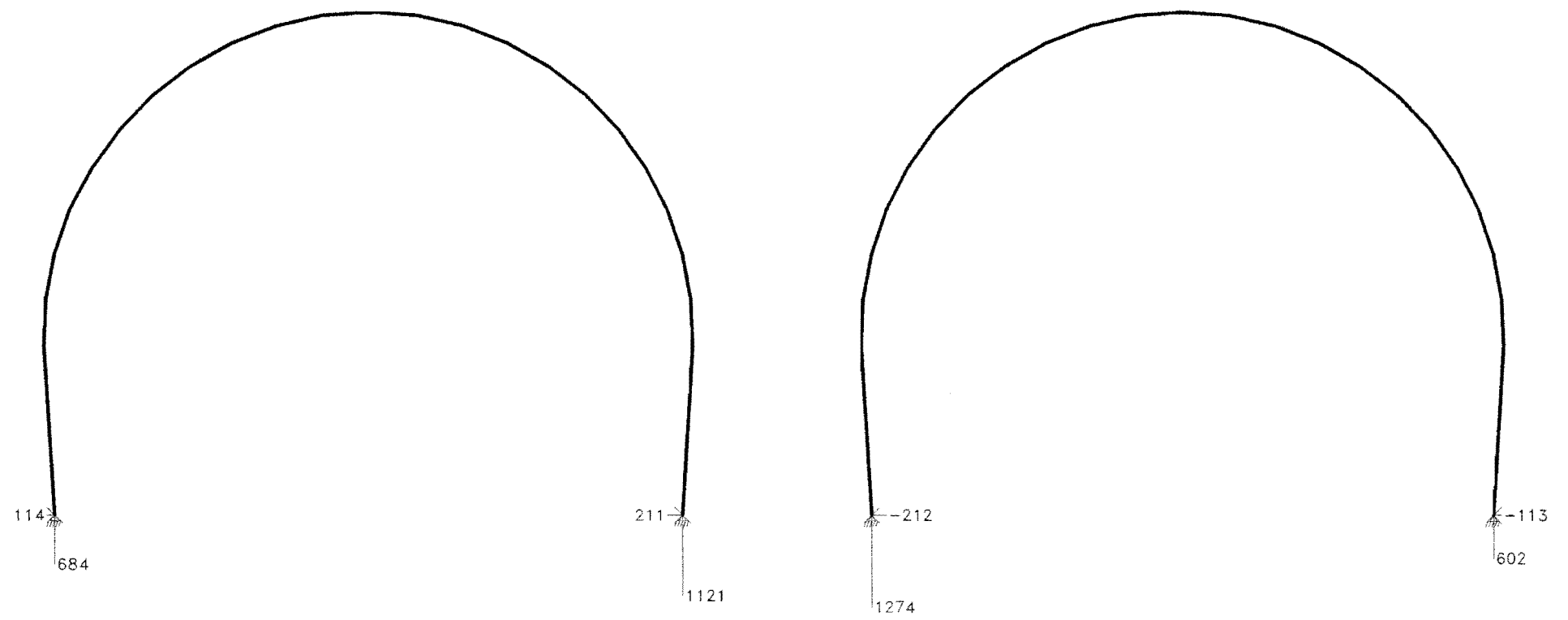
REACTIONS COMB. NO. 3 Combinao FREQUENTE1



SCALE = 1:108

UNITS: kN

DATE:10-11-11



REACTIONS COMB. NO. 4 Combinao FREQUENTE2