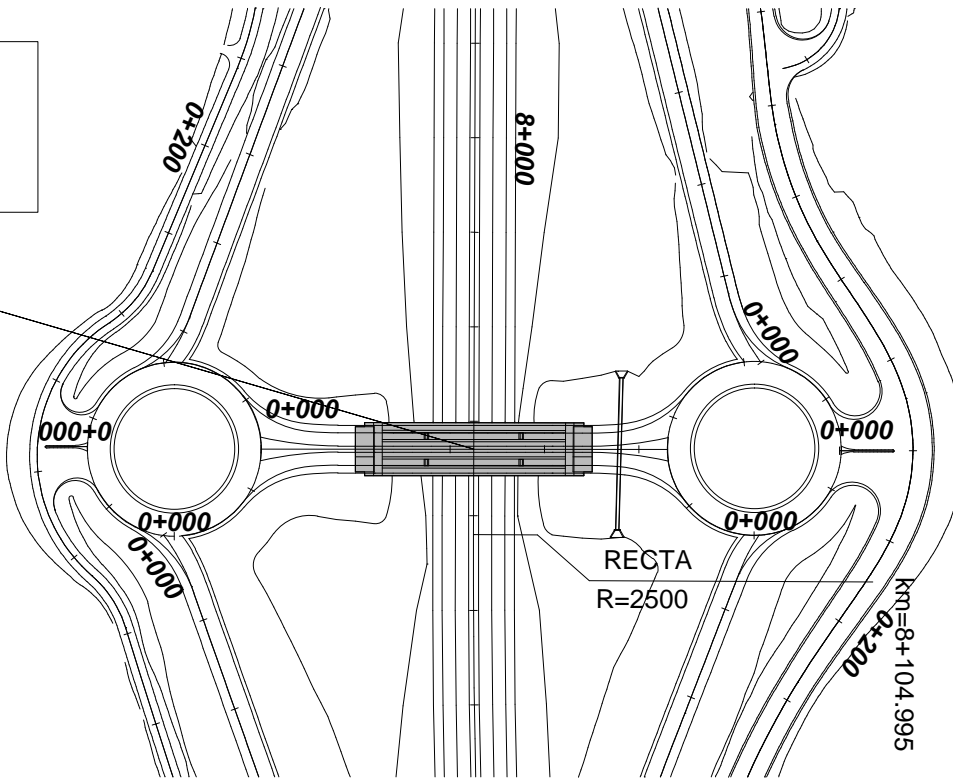
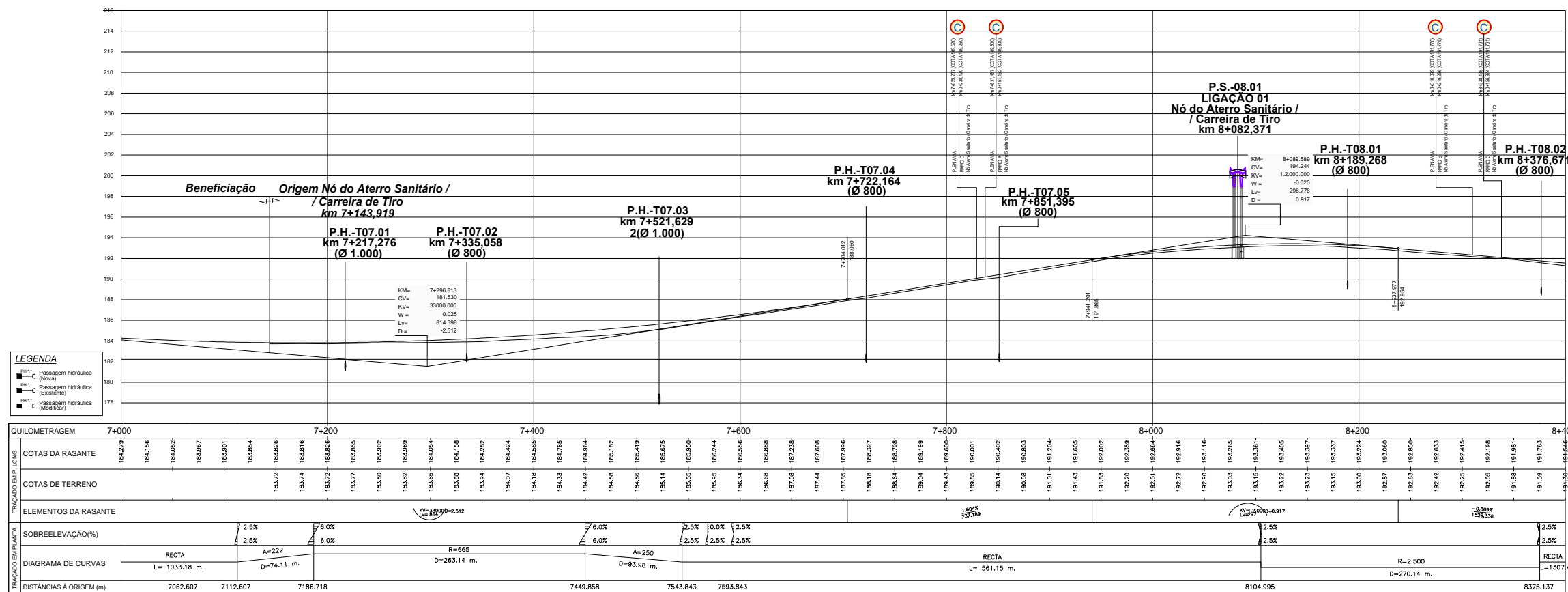


M = 23003,265
 P = -192919,175
 Km Via Principal = 8+082,371
 Z = 193,298 m
 Km Restabelecimento = 0+056,266
 Z = 200,632 m
 $\alpha = 99,790$ Grados



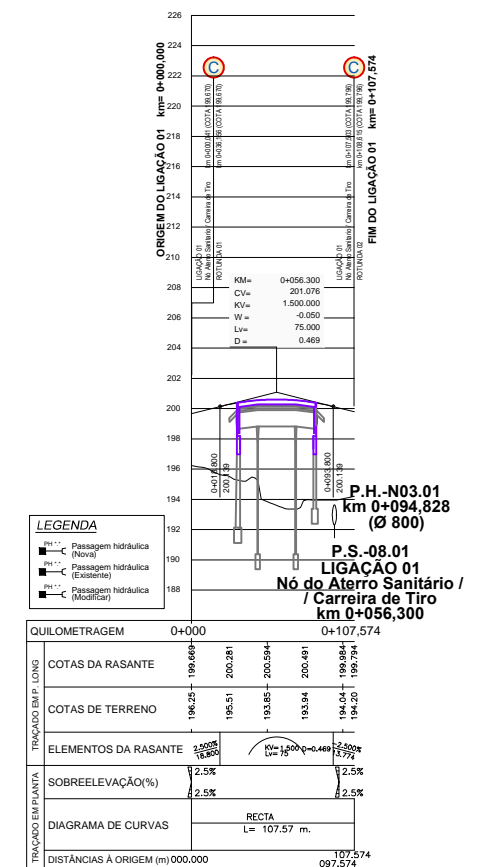
PLANTA DE IMPLANTAÇÃO

A1 - 1/1000 ; A3 - 1/2000



PERFIL LONGITUDINAL VIA PRINCIPAL

Hor: A1 - 1/2500 ; A3 - 1/5000
 Ver: A1 - 1/250 ; A3 - 1/500



PERFIL LONGITUDINAL NÓ DO ATERRO SANITÁRIO / CARREIRA DE TIRO

Hor: A1 - 1/2500 ; A3 - 1/5000
 Ver: A1 - 1/250 ; A3 - 1/500