

## Ensaio de saturação dos provetes 2Q-32 e 2Q-24

Provete: 2Q-32

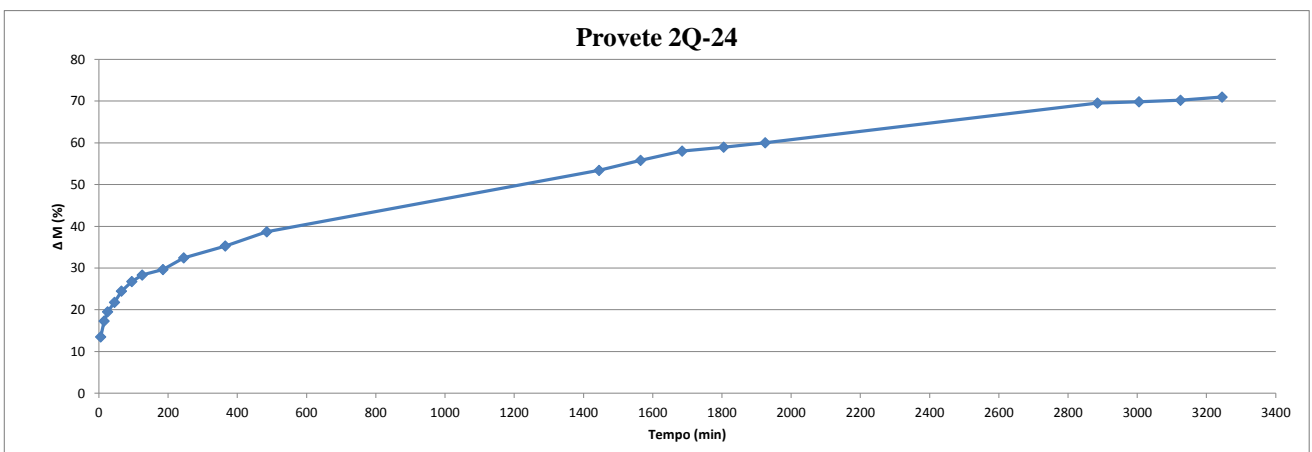
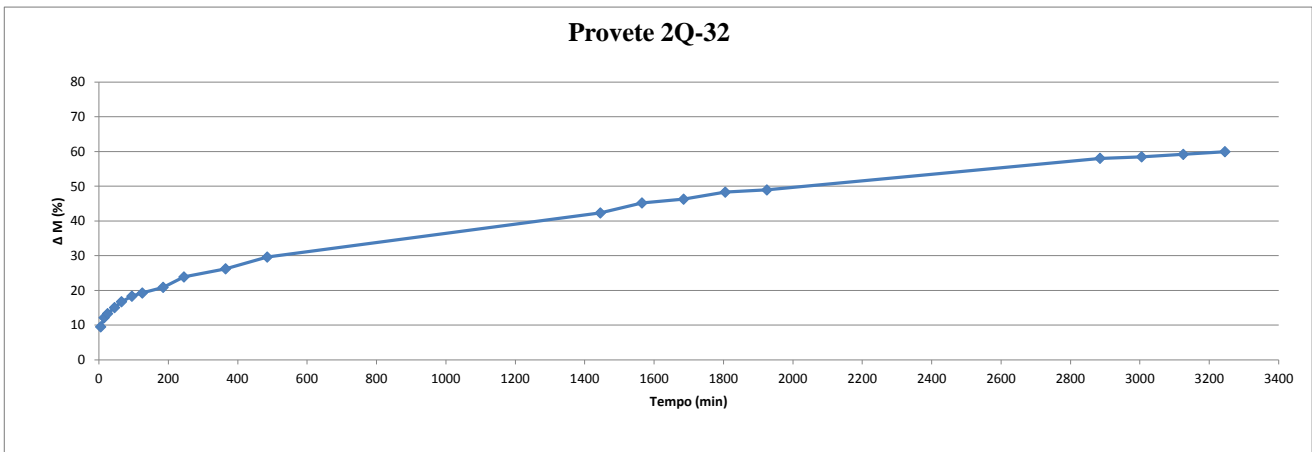
Volume (8,874 x 2,982 x 2,920) (cm <sup>3</sup> ):	77,27
Hora início (h):	09:11
Massa inicial do provete (g):	37,85
Massa da gaiola (g):	8,2
Massa inicial da gaiola+provete (g):	46,05
Massa com cera (g):	0
Massa volúmica inicial (g/cm <sup>3</sup> ):	0,49
Volume imediato (ml):	570

Provete: 2Q-24

Volume (8,880 x 3,002 x 2,940) (cm <sup>3</sup> ):	78,37
Hora início (h):	09:11
Massa inicial do provete (g):	37,93
Massa da gaiola (g):	9,07
Massa inicial da gaiola+provete (g):	47
Massa com cera (g):	0
Massa volúmica inicial (g/cm <sup>3</sup> ):	0,48
Volume imediato (ml):	570

Hora	Tempo	2Q-32		2Q-32	
		Peso (provete +gaiola)	Peso (provete)	$\Delta M$ (%)	$\Delta Mt$ total(%)
9:16h	5	49,64	41,44	9,48	9,48
09:26h	10	50,64	42,44	2,41	12,13
9:36h	10	51,08	42,88	1,04	13,29
9:56h	20	51,74	43,54	1,54	15,03
10:16h	20	52,38	44,18	1,47	16,72
10:46h	30	52,98	44,78	1,36	18,31
11:16h	30	53,33	45,13	0,78	19,23
12:16h	60	53,95	45,75	1,37	20,87
13:16h	60	55,08	46,88	2,47	23,86
15:16h	120	55,97	47,77	1,90	26,21
17:16h	120	57,25	49,05	2,68	29,59
9:16h	960	62,06	53,86	9,81	42,30
11:16h	120	63,15	54,95	2,02	45,18
13:16h	120	63,56	55,36	0,75	46,26
15:16h	120	64,33	56,13	1,39	48,30
17:16h	120	64,57	56,37	0,43	48,93
9:16h	960	68,02	59,82	6,12	58,04
11:16h	120	68,18	59,98	0,27	58,47
13:16h	120	68,45	60,25	0,45	59,18
15:16h	120	68,74	60,54	0,48	59,95

Hora	Tempo	2Q-24		2Q-24	
		Peso (provete +gaiola)	Peso (provete)	$\Delta M$ (%)	$\Delta Mt$ total(%)
9:16h	5	52,12	43,05	13,50	13,50
09:26h	10	53,56	44,49	3,34	17,30
9:36h	10	54,4	45,33	1,89	19,51
9:56h	20	55,26	46,19	1,90	21,78
10:16h	20	56,28	47,21	2,21	24,47
10:46h	30	57,15	48,08	1,84	26,76
11:16h	30	57,74	48,67	1,23	28,32
12:16h	60	58,24	49,17	1,03	29,63
13:16h	60	59,3	50,23	2,16	32,43
15:16h	120	60,38	51,31	2,15	35,28
17:16h	120	61,67	52,6	2,51	38,68
9:16h	960	67,25	58,18	10,61	53,39
11:16h	120	68,16	59,09	1,56	55,79
13:16h	120	69	59,93	1,42	58,00
15:16h	120	69,36	60,29	0,60	58,95
17:16h	120	69,76	60,69	0,66	60,01
9:16h	960	73,37	64,3	5,95	69,52
11:16h	120	73,48	64,41	0,17	69,81
13:16h	120	73,62	64,55	0,22	70,18
15:16h	120	73,91	64,84	0,45	70,95



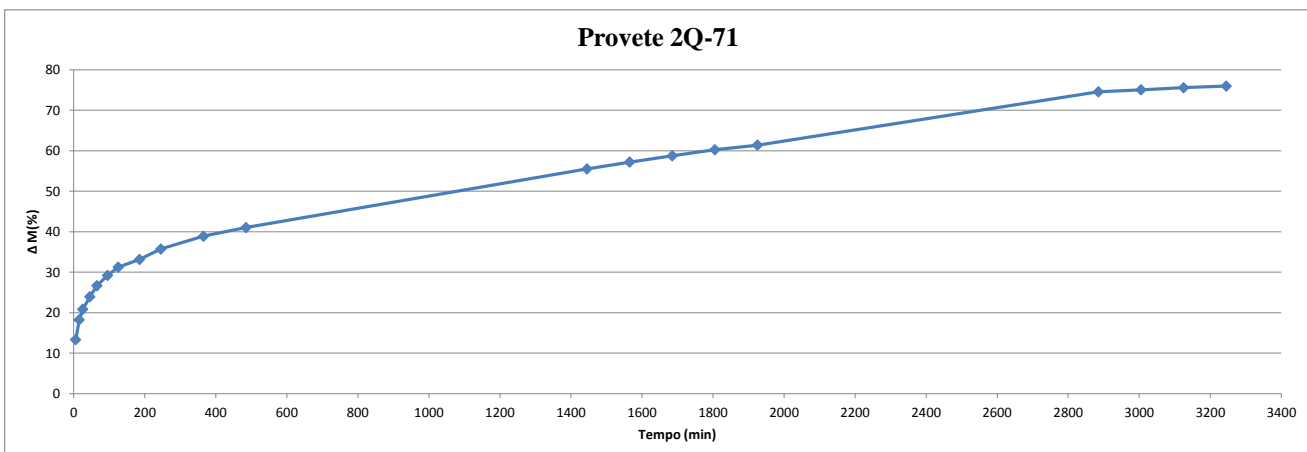
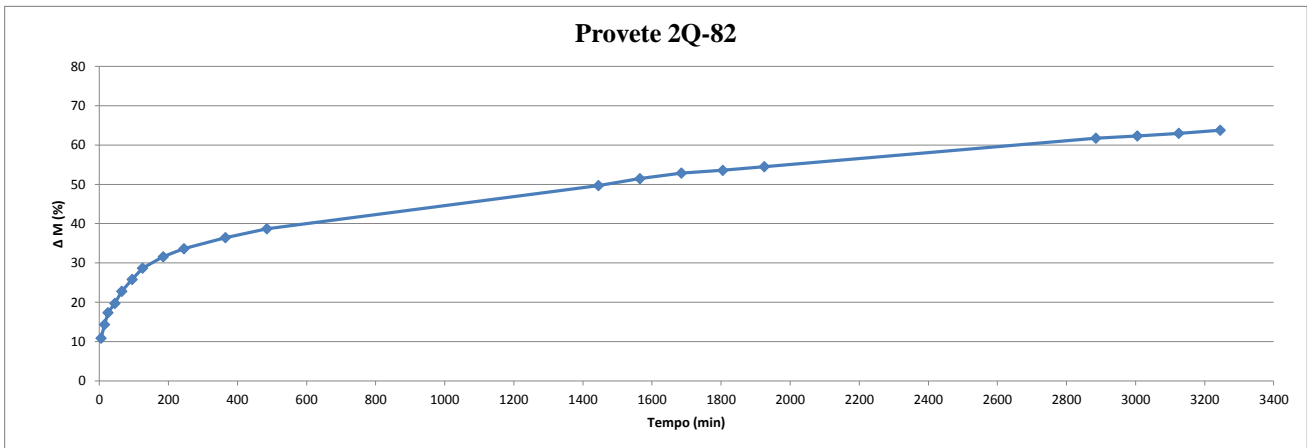
## Ensaio de saturação dos provetes 2Q-71 e 2Q-82

Provete: 2Q-82	
Volume (8,900 x 2,970x 2,890) (cm <sup>3</sup> ):	76,39
Hora início (h):	09:10
Massa inicial do provete (g):	33,1
Massa da gaiola (g):	9,09
Massa inicial da gaiola+provete (g):	42,19
Massa com cera (g):	0
Massa volúmica inicial (g/cm <sup>3</sup> ):	0,43
Volume imediato (ml):	570

Provete: 2Q-71	
Volume (8,846 x 2,790 x 2,956) (cm <sup>3</sup> ):	72,96
Hora início (h):	09:12
Massa inicial do provete (g):	37,75
Massa da gaiola (g):	9,2
Massa inicial da gaiola+provete (g):	46,95
Massa com cera (g):	0
Massa volúmica inicial (g/cm <sup>3</sup> ):	0,52
Volume imediato (ml):	560

Hora	Tempo	2Q-82		$\Delta M$ (%)	$\Delta M$ total (%)
		Peso (provete +gaiola)	Peso (provete)		
9:15h	5	45,78	36,69	10,85	10,85
09:25h	10	46,93	37,84	3,13	14,32
9:35h	10	47,93	38,84	2,64	17,34
9:55h	20	48,71	39,62	2,01	19,70
10:15h	20	49,73	40,64	2,57	22,78
10:45h	30	50,73	41,64	2,46	25,80
11:15h	30	51,68	42,59	2,28	28,67
12:15h	60	52,64	43,55	2,25	31,57
13:15h	60	53,32	44,23	1,56	33,63
15:15h	120	54,25	45,16	2,10	36,44
17:15h	120	55	45,91	1,66	38,70
9:15h	960	58,64	49,55	7,93	49,70
11:15h	120	59,22	50,13	1,17	51,45
13:15h	120	59,69	50,6	0,94	52,87
15:15h	120	59,92	50,83	0,45	53,56
17:15h	120	60,23	51,14	0,61	54,50
9:15h	960	62,63	53,54	4,69	61,75
11:15h	120	62,82	53,73	0,35	62,33
13:15h	120	63,04	53,95	0,41	62,99
15:15h	120	63,3	54,21	0,48	63,78

Hora	Tempo	2Q-71		$\Delta M$ (%)	$\Delta M$ total (%)
		Peso (provete +gaiola)	Peso (provete)		
9:17h	5	51,98	42,78	13,32	13,32
09:27h	10	53,83	44,63	4,32	18,23
9:37h	10	54,81	45,61	2,20	20,82
9:57h	20	55,98	46,78	2,57	23,92
10:17h	20	57,01	47,81	2,20	26,65
10:47h	30	57,97	48,77	2,01	29,19
11:17h	30	58,74	49,54	1,58	31,23
12:17h	60	59,46	50,26	1,45	33,14
13:17h	60	60,43	51,23	1,93	35,71
15:17h	120	61,62	52,42	2,32	38,86
17:17h	120	62,43	53,23	1,55	41,01
9:17h	960	67,9	58,7	10,28	55,50
11:17h	120	68,54	59,34	1,09	57,19
13:17h	120	69,12	59,92	0,98	58,73
15:17h	120	69,69	60,49	0,95	60,24
17:17h	120	70,12	60,92	0,71	61,38
9:17h	960	75,09	65,89	8,16	74,54
11:17h	120	75,28	66,08	0,29	75,05
13:17h	120	75,47	66,27	0,29	75,55
15:17h	120	75,62	66,42	0,23	75,95



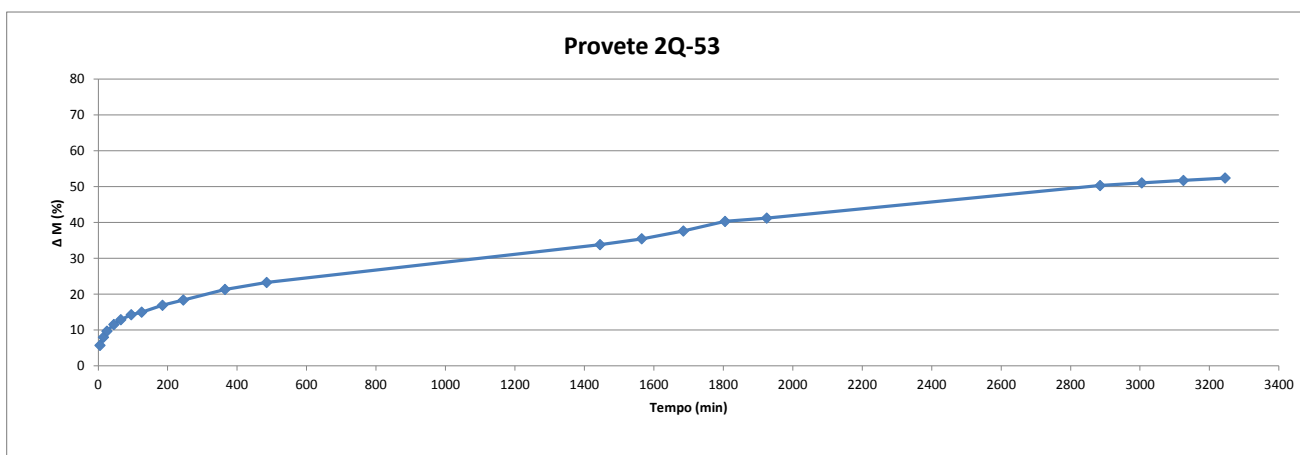
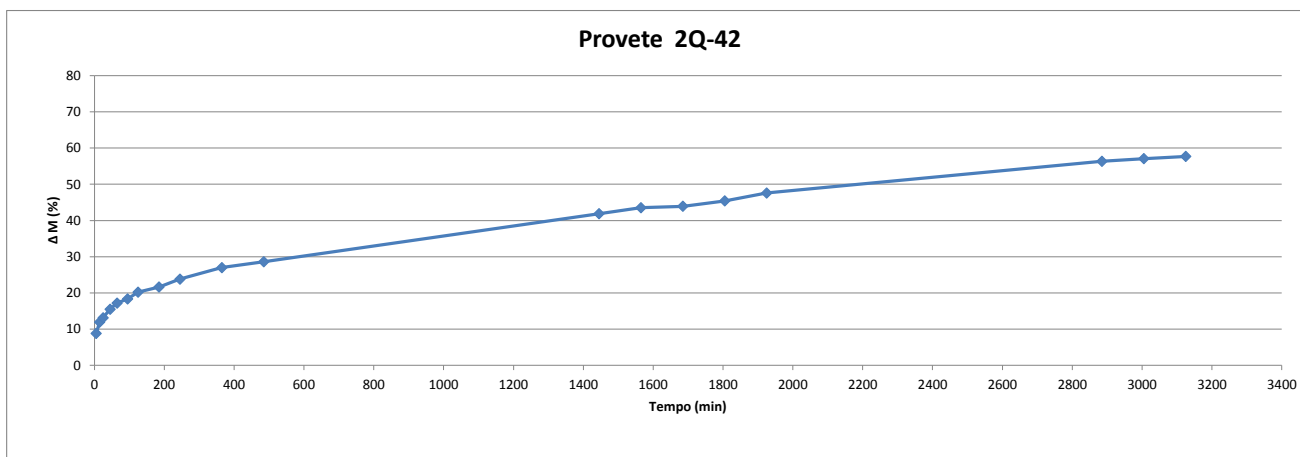
## Ensaio de saturação dos provetes 2Q-42 e 2Q-53

Provete: 2Q-42	
Volume (8,900 x 3,010 x 2,900) (cm <sup>3</sup> ):	77,69
Hora início (h):	09:10
Massa inicial do provete (g):	40,65
Massa da gaiola (g):	8,17
Massa inicial da gaiola+provete (g):	48,82
Massa com cera (g):	0
Massa volúmica inicial (g/cm <sup>3</sup> ):	0,52
Volume imediato (ml):	580

Provete: 2Q-53	
Volume (8,982 x 2,916 x 2,982) (cm <sup>3</sup> ):	78,10
Hora início (h):	09:26
Massa inicial do provete (g):	36,6
Massa da gaiola (g):	9,08
Massa inicial da gaiola+provete (g):	45,68
Massa com cera (g):	0
Massa volúmica inicial (g/cm <sup>3</sup> ):	0,47
Volume imediato (ml):	580

Hora	Tempo	Peso (provete +gaiola)	2Q-42		$\Delta M$ (%)	$\Delta M_{total}$ (%)
			Peso (provete)	$\Delta M$ (%)		
9:15h	5	52,41	44,24	8,83	8,83	
09:25h	10	53,68	45,51	2,87	11,96	
9:35h	10	54,16	45,99	1,05	13,14	
9:55h	20	55,12	46,95	2,09	15,50	
10:15h	20	55,81	47,64	1,47	17,20	
10:45h	30	56,28	48,11	0,99	18,35	
11:15h	30	57,04	48,87	1,58	20,22	
12:15h	60	57,62	49,45	1,19	21,65	
13:15h	60	58,5	50,33	1,78	23,81	
15:15h	120	59,79	51,62	2,56	26,99	
17:15h	120	485	60,45	52,28	1,28	28,61
9:15h	960	1445	65,84	57,67	10,31	41,87
11:15h	120	1565	66,51	58,34	1,16	43,52
13:15h	120	1685	66,68	58,51	0,29	43,94
15:15h	120	1805	67,28	59,11	1,03	45,41
17:15h	120	1925	68,16	59,99	1,49	47,58
9:15h	960	2885	71,72	63,55	5,93	56,33
11:15h	120	3005	72,02	63,85	0,47	57,07
13:15h	120	3125	72,27	64,1	0,39	57,69
15:15h	120	3245	72,42	64,25	0,23	58,06

Hora	Tempo	Peso (provete +gaiola)	2Q-53		$\Delta M$ (%)	$\Delta M_{total}$ (%)
			Peso (provete)	$\Delta M$ (%)		
9:26h	5	47,77	38,69	5,71	5,71	
09:36h	10	48,6	39,52	2,15	7,98	
9:46h	10	49,22	40,14	1,57	9,67	
10:06h	20	49,9	40,82	1,69	11,53	
10:26h	20	50,39	41,31	1,20	12,87	
10:56h	30	50,9	41,82	1,23	14,26	
11:26h	30	51,16	42,08	0,62	14,97	
12:26h	60	51,86	42,78	1,66	16,89	
13:26h	60	52,4	43,32	1,26	18,36	
15:26h	120	53,48	44,4	2,49	21,31	
17:26h	120	485	54,19	45,11	1,60	23,25
9:26h	960	1445	58,05	48,97	8,56	33,80
11:26h	120	1565	58,65	49,57	1,23	35,44
13:26h	120	1685	59,44	50,36	1,59	37,60
15:26h	120	1805	60,42	51,34	1,95	40,27
17:26h	120	1925	60,76	51,68	0,66	41,20
9:26h	960	2885	64,08	55	6,42	50,27
11:26h	120	3005	64,35	55,27	0,49	51,01
13:26h	120	3125	64,6	55,52	0,45	51,69
15:26h	120	3245	64,85	55,77	0,45	52,38



## Ensaio de saturação do provete 2Q-72

Provete: 2Q-72	
Volume (8,858 x 3,000 x 2,840) (cm <sup>3</sup> ):	75,47
Hora início (h):	09:16
Massa inicial do provete (g):	38,39
Massa da gaiola (g):	9,21
Massa inicial da gaiola+provete (g):	47,6
Massa com cera (g):	0
Massa volúmica inicial (g/cm <sup>3</sup> ):	0,51
Volume imediato (ml):	570

Hora	Tempo		2Q-72		2Q-72	
			Peso (provete +gaiola)	Peso (provete)	$\Delta M$ (%)	$\Delta M$ total(%)
9:21h	5	5	50,71	41,5	8,10	8,10
09:31h	10	15	51,81	42,6	2,65	10,97
9:41h	10	25	52,84	43,63	2,42	13,65
10:01h	20	45	53,63	44,42	1,81	15,71
10:21h	20	65	54,24	45,03	1,37	17,30
10:51h	30	95	54,76	45,55	1,15	18,65
11:21h	30	125	55,6	46,39	1,84	20,84
12:21h	60	185	56,89	47,68	2,78	24,20
13:21h	60	245	57,88	48,67	2,08	26,78
15:21h	120	365	59,48	50,27	3,29	30,95
17:21h	120	485	61,31	52,1	3,64	35,71
9:21h	960	1445	71,45	62,24	19,46	62,13
11:21h	120	1565	72,25	63,04	1,29	64,21
13:21h	120	1685	73,15	63,94	1,43	66,55
15:21h	120	1805	73,91	64,7	1,19	68,53
17:21h	120	1925	74,27	65,06	0,56	69,47
9:21h	960	2885	77,92	68,71	5,61	78,98
11:21h	120	3005	78,26	69,05	0,49	79,86
13:21h	120	3125	78,53	69,32	0,39	80,57
15:21h	120	3245	78,88	69,67	0,50	81,48

