

# Interest rate exposure of Spanish banks: A nonparametric analysis

Laura Ballester\*

Román Ferrer

Cristóbal González

Departamento de Economía Financiera y Actuarial  
Universidad de Valencia

## ABSTRACT

Interest rate risk is one of the major financial risks faced by banks due to the very nature of the banking business. The most common approach in the literature has been to estimate the impact of interest rate risk on banks using a simple linear regression model. However, the relationship between interest rate changes and bank stock returns does not need to be exclusively linear. This article provides a comprehensive analysis of the interest rate exposure of the Spanish banking industry employing both parametric and non parametric estimation methods. Its main contribution is to use, for the first time in the context of banks' interest rate risk, a nonparametric regression technique that avoids the assumption of a specific functional form.

On the one hand, it is found that the Spanish banking sector exhibits a remarkable degree of interest rate exposure, although the impact of interest rate changes on bank stock returns has significantly declined following the introduction of the euro. Further, a pattern of positive exposure emerges during the post-euro period. On the other hand, the results corresponding to the nonparametric model support the expansion of the conventional linear model in an attempt to gain a greater insight into the actual degree of exposure.

**J.E.L. Classification:** G12, G21, C52

**Keywords:** interest rate risk, banking firms, stocks, nonparametric regression techniques.

---

\* Corresponding author. Departamento de Economía Financiera y Actuarial, Universidad de Valencia, Facultad de Economía, Avda. Tarongers, s/n, 46022 Valencia, Spain. [Laura.Ballester@uv.es](mailto:Laura.Ballester@uv.es). Laura Ballester would like to express her gratitude for the funding received from the JCCM, proyecto PEIII1-0031-6939.

The authors would like to thank Alfonso Novales, Juan Nave, Ángeles Fernández, Paz Jordá, Miguel Ángel Martínez, Joaquín Maudos, and Eliseo Navarro for their valuable comments and suggestions.

## **1. Introduction**

Interest rate risk (IRR, hereafter) is acknowledged as one of the major financial risks borne by companies. This is due to the fact that changes in interest rates affect both a firm's expected cash flows and the discount rates used to value them. Moreover, the high volatility in interest rates in recent years along with the significant level of financial leverage for most companies has also contributed to the growing relevance of interest rate exposure.

Much of the research on corporate exposure to IRR has concentrated on financial institutions because of the particularly interest rate sensitive nature of the banking business. Indeed, financial assets and liabilities represent a substantial portion of the balance sheet of banks and there exists generally a maturity mismatch between them. The asset-liability maturity mismatch has been usually identified as the key factor responsible for the high interest rate sensitivity of banking firms. The most common approach in the literature has consisted of measuring interest rate exposure by estimating the sensitivity of the value of the bank, proxied by the bank's stock return, to movements in interest rates using a simple linear regression model. There are, however, several reasons to suspect that the relationship between interest rates and market value of banks may be of nonlinear nature. On the one hand, since bank stock prices depend on interest rates both through the discount factor and the effect of interest rate changes on expected net interest income, it seems reasonable to expect that the impact of IRR is not exclusively linear. On the other hand, the risk management policy followed by banks, typically focused on the use of instruments with linear payoff profiles, favors the presence of nonlinearities in the interest rate exposure. In addition, the response of bank stock returns to interest rate shocks may depend upon the sign or the magnitude of the

shock, thus generating an asymmetric exposure to IRR. In particular, interest rate rises and falls may affect bank value differently (*sign asymmetry*). Similarly, larger interest rate fluctuations may have a differential effect on bank value than smaller interest rate changes (*size or magnitude asymmetry*).

The aim of this paper is to provide a comprehensive analysis of the impact of IRR on the Spanish banking industry at the portfolio level. To this end, the degree of interest rate exposure is assessed not only using the standard linear model, but also examining the existence of nonlinearities through parametric and nonparametric techniques. The primary contribution of the paper lies in the fact that it constitutes, to the best of our knowledge, the first attempt to quantify interest rate exposure through nonparametric regression methods. As a matter of fact, the only two studies that have employed a nonparametric approach in the context of corporate exposure to risk have focused on exchange rate exposure (Guo and Wu, 1998; and Aysun and Guldi, 2009).

Nonparametric estimation techniques provide a flexible framework to model the relationship between variables. Unlike parametric regression, nonparametric analysis does not require any prior assumptions about the functional form of the model and the distribution of the error terms. The comparison of the results of the different methods allows us to evaluate to what extent the assumptions concerning the functional relationship between interest rates and bank stock prices can affect the results about the level of interest rate exposure.

The Spanish financial system can be classified as a bank-based system in which banking institutions play a central role in mobilizing savings and allocating resources. Spanish banks follow a universal banking model with a marked focus on retail banking. The Spanish banking sector has undergone a dramatic transformation over the past two decades largely due to an intensive process of deregulation, liberalization and

consolidation during the run-up to the European Economic and Monetary Union. As a result, the major Spanish banking conglomerates, Santander and BBVA, rank currently among the top twenty largest banks in the world based on market capitalization, with a strong presence in Latin America and Europe. Therefore, the Spanish banking industry provides an excellent setting to investigate whether the adoption of the euro as a single currency in January 1999, with its implications in terms of greater financial stability induced by a common monetary policy and deepening and broadening of capital markets, has changed the nature and magnitude of banks' interest rate exposure.

This study reveals some interesting results. First, the Spanish banking sector exhibits a remarkable interest rate exposure, even though the extent of IRR faced by Spanish banks has noticeably decreased after the launch of the euro. Second, a pattern of positive exposure seems to emerge during the post-euro period, reflecting a sharp change in the nature of the impact of IRR on bank stocks. Third, the superior performance of the nonparametric model supports the expansion of the traditional linear model in order to gain a better insight into the actual degree of exposure to IRR of banking institutions.

The evidence of a lower exposure to interest rate changes in the more stable environment associated to the European Monetary Union could be a relevant piece of information for other economies whose banking industry is currently involved in a process of modernization just like the one occurred in Spain. This is the case, for example, of the Central and Eastern European countries which have joined the European Union and have adopted the euro recently or are expected to do so in the next years.

The knowledge of the effect of interest rate fluctuations on bank equity values is crucial not only for purposes of IRR management, but also for other areas of finance such as asset allocation, portfolio management, asset pricing, and banking regulation.

The remainder of the paper is organized as follows. Section 2 provides an overview of previous literature regarding banks' exposure to IRR. Section 3 details the data employed in this study. Section 4 describes the different model specifications employed. Section 5 reports the major empirical findings. Finally, Section 6 concludes.

## **2. Review of literature**

A large number of empirical studies have examined the impact of IRR on the value of banking institutions since the early 1980s. Most of this research, focused on a few highly developed countries, especially the US and only more recently Germany, Australia, Japan, or the UK, has adopted a capital market approach within the framework of the two-index linear model postulated by Stone (1974). The Stone's model includes an interest rate change factor in addition to the traditional market index for explaining bank stock returns.<sup>1</sup> Three main results emerge from this body of work. First, a significantly negative effect of movements in interest rates on banking firms' stock returns is generally documented, and it has been commonly attributed to the maturity mismatch between banks' assets and liabilities (Flannery and James, 1984; Elyasiani and Mansur, 1998; Au Yong and Faff, 2008; Czaja et al., 2009 and 2010). This finding corresponds to the traditional view of banks as financial intermediaries borrowing short-term from savers and lending long-term to investors (positive duration gap). Accordingly, a rise in interest rates would adversely affect a bank's market value (the present value of its assets would fall more than the present value of its liabilities)

---

<sup>1</sup> For a survey of the literature on interest rate exposure of financial intermediaries see Staikouras (2003 and 2006).

and net interest income (the cost of its liabilities would increase more rapidly than the yield on its assets). Second, bank stock returns tend to exhibit more sensitivity to changes in long-term interest rates than to changes in short-term rates (Elyasiani and Mansur, 1998; Bartram, 2002; Saporoschenko, 2002; Czaja et al., 2009). Third, the interest rate sensitivity of stock returns of banks has declined over time mainly due to the increased availability of more advanced tools for measuring and managing IRR (Faff and Howard, 1999; Benink and Wolff, 2000; Ryan and Worthington, 2004; Joseph and Vezos, 2006).

Even though the literature on corporate exposure to IRR in the Spanish case has received a considerable boost in recent years, this field has not been fully explored. Yet, it is possible to distinguish two lines of research. The first concerns the interest rate exposure of Spanish corporations at the industry level, including both bank and non-bank firms (Jareño, 2006 and 2008; Ferrer et al., 2008 and 2010; Jareño and Navarro, 2010). These studies demonstrate the high interest rate sensitivity of various sectors such as construction, real estate, electrical, and banking. The second line consists of a few studies that specifically focus on the impact of IRR on the stock market performance of the Spanish banking industry (Fernández and García, 1992; López, 2002; Ballester et al., 2009). Nevertheless, this body of work provides mixed evidence concerning the importance of interest rate exposure of Spanish banks, probably due to differences in the sample periods, interest rate variables used and/or methodologies applied.

It is worth noting that the implicit assumption underlying almost all the literature is that interest rate exposure is linear. Consequently, much less attention has been paid to other possible IRR patterns. In fact, the great majority of studies about corporate exposure to macroeconomic risks (e.g., exchange rate risk, IRR, or inflation risk) that

investigate the presence of nonlinear or asymmetric exposure components have focused on exchange rate risk (Koutmos and Martin, 2003; Bartram, 2004; Tai, 2005; and Priestley and Odegaard; 2007).

Despite the above mentioned, there are some empirical papers that explore the possibility of a profile of exposure more complex than the linear one. The seminal work in this field was done by Chen and Chan (1989), who investigate for potential asymmetry of interest rate sensitivity of U.S. financial institutions around interest rate cycles. A significant asymmetry is found during up and down cycles of interest rates, suggesting that the sensitivities of bank stock returns are highly sample-dependent. In the same vein, Hallerbach (1994) documents that the sensitivity of the Dutch stock market to changes in interest rates is not constant over time, showing a clear pattern of asymmetry to interest rate fluctuations of different sign. He points out that the specification of a nonlinear model could partly explain the asymmetry between sensitivities to interest rate rises and falls. More recently, Verma and Jackson (2008) utilize a multivariate EGARCH (exponential generalized autoregressive conditional heteroskedastic) model to evaluate the presence of spillover effects and asymmetries between short- and long-term interest rates and portfolios of US bank stocks. Their results provide evidence of response asymmetries for the portfolios of money center and other large banks, indicating that these banks are more sensitive to negative than positive interest rate changes.

In a very interesting paper, Bartram (2002) analyzes the impact of IRR on a large sample of German nonfinancial corporations at the industry level. His results support the existence of significant linear and nonlinear exposures with respect to changes in several interest rate variables. Ferrer et al. (2010) perform a similar study for Spain at the industry level, including both financial and nonfinancial firms. A

significant linear and nonlinear interest rate exposure is found for the construction, real estate, electrical, utility and banking industries, although the traditional linear exposure pattern is economically more important than the nonlinear one. Using smooth transition regression models, Arango et al. (2002) also report some evidence of a nonlinear and inverse relationship between the share prices of the Colombian stock market and several interbank loan interest rates.

### **3. Data**

The sample consists of commercial banks listed on the Spanish Stock Exchange over the period from January 1993 to December 2008 whose stocks traded publicly for at least a year (a total of 23 banking institutions). Due to factors such as mergers and acquisitions and IPOs, the number of firms included in the sample varies over time. This sample selection procedure uses all the bank data available at the end of each year, hence minimizing the survivor bias and improving the efficiency of the estimation.

The period of study allows us to investigate whether the introduction of the euro in January 1999 did induce a significant alteration in the pattern of interest rate exposure of Spanish commercial banks. To this end, the total sample period is split into two subsamples, the pre-euro period, from January 1993 to December 1998, and the post-euro period, from January 1999 to December 2008. The adoption of the euro as a common European currency is a major historical event in international financial markets. Thus, it is likely to have a significant impact on the risks incurred by European banks in their activity. The euro may affect interest rate exposure of banks through two main channels. First, since the launch of the common currency Eurozone interest rates are set by the European Central Bank, which implements a single monetary policy for the euro area as a whole, with no national bias. Thus, the environment of more stable



and historically low interest rates and greater transparency in monetary policy brought about by the European Monetary Union is expected to reduce the extent of IRR faced by European banking institutions.<sup>2</sup> Second, the broadening and deepening of European corporate bond and interest rate derivative markets associated with the euro have greatly increased the availability of liquid instruments to implement a more effective IRR management, with the consequent negative effect on banks' interest rate exposure.<sup>3</sup>

Following a usual practice in the literature (Flannery and James, 1984; Hirtle, 1997; Benink and Wolff, 2000; Soto et al., 2005; Ferrer et al., 2010), weekly stock returns, adjusted for dividends and stock splits, are employed. The weekly returns are calculated from Wednesday to Wednesday using closing stock prices in order to prevent the possible bias associated to the weekend effect. Weekly rather than daily data are utilized because sometimes the market takes a while to understand and reflect the effects of interest rate changes on asset prices. Thus, the use of very short (daily) horizon returns can make it much more difficult to properly assess a firm's interest rate exposure. In addition, weekly data are preferred over monthly data because of the availability of a much larger number of observations that allows us to obtain more precise results. The market portfolio is proxied by the *Indice General de la Bolsa de Madrid*, the widest Spanish value-weighted market index. Equity market data are obtained from the Madrid Stock Exchange database.

The 10-year Spanish government bond yield and the 3-month interbank rate are used as proxies for Spanish long- and short-term interest rates, respectively. The choice

---

<sup>2</sup> Specifically, during periods of interest rate stability there is little uncertainty about interest rates and interest rate changes, even unanticipated, will be generally of small magnitude. In contrast, during periods of higher interest rate volatility there is greater uncertainty concerning changes in interest rates. Therefore, it seems reasonable to assume that the degree of interest rate exposure will be relatively higher in these circumstances.

<sup>3</sup> For instance, the unprecedented boom of corporate bond issuance with a wide range of maturities following the launch of the euro considerably did facilitate banks to match the interest rate sensitivity of their assets and liabilities.

of the yield on 10-year government bonds to measure banks' IRR has become a standard in the literature (Hirtle, 1997; Elyasiani and Mansur, 1998; Oertmann et al., 2000; Faff et al., 2005). Long-term interest rates are those that further incorporate expectations about future prospects for the economy and determine to a greater extent the cost of borrowed funds. Therefore, it seems reasonable to assume that long-term rates have a greater influence on corporate investment decisions and the expected future profitability of firms. In addition, 3-month interbank rates may also play a critical role as the money market has become increasingly important for Spanish banks in recent years due to two main reasons. First, interbank rates are widely used as reference rates for a great variety of variable-rate products, both on the asset and the liability side of the balance sheet. Second, banking institutions have relied heavily on the interbank market to finance the extraordinary credit expansion within the framework of the Spanish housing boom. All interest rate data are extracted from the Bank of Spain's database.

Along the lines followed by, among others, Elyasiani and Mansur (1998), Faff et al. (2005), Verma and Jackson (2008) and Czaja et al. (2009 and 2010), portfolio data rather than individual firm data are used to examine banks' interest rate exposure. The advantage of forming portfolios is twofold. First, it provides an efficient way for condensing a substantial amount of information about stock return behaviour. Second, it helps to smooth out the noisiness in the data due to transitory shocks to individual banks, hence producing more reliable results. The portfolio analysis may, however, mask the potential dissimilarities among individual firms within each portfolio. The sample is disaggregated by size into three equally-weighted portfolios (large banks, medium banks and small banks). The large banks portfolio is made up of banks with total assets exceeding €60 billion, leading to the inclusion therein of the two big Spanish banking groups (Banco Santander and BBVA). The medium banks portfolio is formed

by those institutions with total assets ranging from €7 billion to €60 billion. A total of seven banking institutions, representative of the Spanish mid-size banks, are included within this category. Lastly, the small banks portfolio is comprised of the twelve smallest banks (with total assets less than €7 billion).

Table 1 lists the individual banks included in the analysis and their allocation among the three portfolios, along with their respective stock ticker symbol, number of observations, and average amount of total assets. Some descriptive statistics for the returns on individual banks and size-based portfolios are also reported.<sup>4</sup> The vast majority of return series exhibit statistically significant skewness and kurtosis at the conventional levels. Hence, the null hypothesis of normality of returns is clearly rejected in all cases.

Table 2 contains summary information on the interest rate series. For both the full sample period and the two sub-periods the average yield on 10-year government bond yields is higher than the average 3-month interbank rate. It should be also noted that the average 10-year and 3-month rates take substantially lower values in the post-euro era. Further, the 10-year yield series has the lowest standard deviation regardless of the sample period considered, consistent with the idea that volatility of interest rates usually decreases as maturity increases. As expected, interest rate volatility has significantly declined following the introduction of the euro, confirming the greater stability in interest rates during the post-euro period.<sup>5</sup> Figure 1 illustrates the evolution over time of the series of interest rates, which exhibit a clear downward trend during most of the sample period.

---

<sup>4</sup> The composition of the three bank stock portfolios remains fixed for the whole sample period.

<sup>5</sup> In this regard, a similar result is reached by Abad (2005) and Novales and Benito (2007) in the Spanish interest rate swap and government debt markets, respectively.

## 4. Methodology

This section provides a brief description of the model specifications employed. The linear regression model traditionally used in prior research on banks' IRR is presented first, followed by several nonlinear parametric and nonparametric approaches.

### 4.1. Parametric models

#### 4.1.1. Linear Model

The two-index linear regression model proposed by Stone (1974) is the benchmark model in the literature to quantify the degree of bank interest rate exposure. This model takes the following form:

$$R_{it} = \alpha_i + \beta_{mi}R_{mt} + \delta_i\Delta I_t + \varepsilon_{it} \quad (1)$$

where  $R_{it}$  denotes the return on asset  $i$  in period  $t$ ,  $R_{mt}$  the return on the market portfolio,  $\Delta I_t$  the change in the interest rate, and  $\varepsilon_{it}$  an error term.

The coefficient on the market portfolio return,  $\beta_{mi}$ , reflects the sensitivity of the return on asset  $i$  to general market fluctuations and is, therefore, a measure of market risk. The inclusion of a market index is designed to control for market-wide factors, mitigating the omitted variable bias and improving the efficiency of the estimation. The coefficient on the interest rate change term,  $\delta_i$ , represents the sensitivity of the return on asset  $i$  to movements in interest rates, controlling for changes in the return on the market. Hence, it can be interpreted as a measure of exposure to IRR. Note that a negative interest rate exposure coefficient corresponds to the traditional view of banks as borrowing short-term and lending long-term.

Since movements in interest rates also affect the market return and, through that channel, bank stock returns, the impact of IRR on asset  $i$  is partly captured by the coefficient of market risk  $\beta_{mi}$  and, hence, the interest rate coefficient  $\delta_i$  only represents a partial indicator of IRR. In order to obtain a measure of the *total* interest rate exposure of asset  $i$ , an orthogonalization procedure is implemented.<sup>6</sup> Considering that the main focus of this study is to evaluate the impact of IRR on the value of banks, an orthogonalization scheme where the market factor is orthogonalized with respect to the interest rate change factor is adopted. The same strategy has been followed by, among others, Hirtle (1997), Fraser et al. (2002), Soto et al. (2005) and Czaja et al. (2009 and 2010), to avoid any estimation bias due to multicollinearity between independent variables. Thus, the auxiliary regression run is:

$$R_{mt} = a + b\Delta I_t + \mu_{mt} \quad (2)$$

where  $a$  and  $b$  are parameters to be estimated and  $\mu_{mt}$  denotes the residuals of the regression. This residual series is usually called the residual market factor and represents the part of the market returns that cannot be explained by changes in interest rates. Obviously, the residual market factor is uncorrelated with interest rate fluctuations by construction.

Then, the original market return is replaced by the residual market factor estimated from Eq. (2), so that Eq. (3) is obtained as follows:

$$R_{it} = \gamma_i + \beta_{mi}\mu_{mt} + \lambda_i\Delta I_t + \varepsilon_{it} \quad (3)$$

---

<sup>6</sup> In this regard, the concern of a firm should be to hedge the risk of total potential value changes resulting from any movements in interest rates irrespective of whether these movements affect either the common risk of for all firms or its individual risk.

where  $\gamma_i = \alpha_i + a\beta_{mi}$  and  $\lambda_i = \delta_i + b\beta_{mi}$ . In contrast, the market beta coefficient  $\beta_{mi}$  remains the same than in Eq. (1). Residuals also coincide implying the same  $R^2$  in the empirical estimations of models in Eq. (1) and (3).

The main advantage of using the specification in Eq. (3) is that it allows us to obtain a total measure of interest rate exposure. The coefficient  $\lambda_i$  reflects both the direct and indirect (via the market return) effect on interest rate variations on bank equity values. As pointed out by Czaja et al. (2009), the resulting  $\lambda_i$  is identical to the coefficient from a simple univariate regression of bank asset returns on changes in interest rates, just with more precision in the estimates. In turn,  $\beta_{mi}$  reflects the pure sensitivity to general market movements uncontaminated by interest rate effects. Moreover, the same orthogonalization approach is used in all the other models described below.

#### **4.1.2. Nonlinear Model**

Early empirical studies of corporate exposure to IRR focused almost exclusively on linear exposure. Nevertheless, as noted by Bartram (2002), the value of a firm, defined as the present value of all its expected cash flows, may depend in a very complex way on interest rates since movements in interest rates affect both discount rates and expectations about future cash flows. Further, most companies typically employ risk management instruments with linear payoffs (e.g., forward rate agreements, futures or swaps), thus only hedging against linear exposure. In contrast, nonlinear exposure is much less taken into account by firms when designing their hedging strategies. This implies a higher chance of finding empirically a significant nonlinear exposure, which in turn could be hedged using instruments with nonlinear payoff schedules such as interest rate options. Therefore, in order to gain a better understanding

of the nature of IRR borne by firms it is interesting to examine the presence of nonlinear effects in their interest rate exposure.

Even so, it is very difficult to impose a specific functional form *a priori* to characterize the nonlinear exposure as the shape of the exposure may not be uniform across companies. In fact, the exact form of nonlinearity may be a complex function of different firm characteristics such as financial leverage, profitability, size, liquidity or risk management practices. This study represents a first attempt to assess the presence of nonlinear exposure, to be completed later on with the nonparametric model. Therefore, a simplifying approach, which is based on the assumption that some generic nonlinear functions are enough to accurately capture the nonlinearities, is used. Thus, a regression equation with a general nonlinear component can be written as:

$$R_{it} = \alpha_i + \beta_{mi} \mu_{mt} + \theta_i f(\Delta I_t) + \varepsilon_{it} \quad (4)$$

where  $f(\cdot)$  denotes a nonlinear function of the changes in interest rates and the parameter  $\theta_i$  measures the effect of nonlinear movements in interest rates on the returns of asset  $i$ . A nonlinear specification implies that the interest rate sensitivity depends on the size of the interest rate shock.

Relevant nonlinear functions in this context can be classified as concave and convex functions. Concave functions (e.g., cubic root function or inverse hyperbolic sine function) assume a relatively higher sensitivity of stock returns to small movements in interest rates than to large interest rate changes. Accordingly, these functional forms do not seem very appropriate to provide a realistic measure of the impact of interest rate changes on bank equity prices. In contrast, convex functions (e.g., cubic function or hyperbolic sine function) reflect a comparatively more aggressive response of stock returns to larger interest rate fluctuations, so that they are better suited to inefficiencies

in capital markets. In particular, convex functions are consistent with the idea that small changes in interest rates are probably dominated by other price relevant information and have less or even no effect on stock prices, while large interest rate shocks have a greater impact on stock prices. Consequently, convex functions appear to be more appropriate to model a nonlinear relationship between interest rate fluctuations and stock returns.

In any case, there is no consensus about the most convenient convex function to be used in order to estimate a nonlinear interest rate exposure. In this sense, one of the simplest ways to introduce nonlinearity is to use a cubic function of the form  $f(x) = a + bx + cx^2 + dx^3$ , where the quadratic and cubic terms permit this function to take different shapes depending on the sign and magnitude of the parameters  $c$  and  $d$ . Further, this function is sign-sensitive, allowing us to distinguish between the effect of interest rate rises and that of interest rate falls. Therefore, the cubic function will be used in this study. Additionally, it is worth to point out that the parametric models are estimated for each bank portfolio applying OLS with the Newey-West procedure to correct standard errors for autocorrelation and heteroscedasticity.

#### **4.1.3. Sign and Size Asymmetric Models**

An alternative way of detecting nonlinear effects is to examine the presence of asymmetries in the response of bank asset returns to interest rate changes of different sign and/or size. On the one hand, bank asset returns may react differently to interest rate rises and falls (*sign asymmetry*). On the other hand, large and small interest rate shocks (*size or magnitude asymmetry*) may impact differently on bank asset returns. To allow for these asymmetries, the basic model in Eq. (1) is extended. Specifically, the sign asymmetry can be analyzed using the following model:



$$R_{it} = \alpha_i + \beta_{mi}\mu_{mt} + \delta_i\Delta I_t + \phi_i D_t^{sign} + \eta_i D_t^{sign} \Delta I_t + \varepsilon_{it} \quad (5)$$

The dummy variable  $D_t^{sign}$  is equal to 1 if  $\Delta I_t > 0$  and zero otherwise. For a given value of the market portfolio, the response of bank stock returns will be  $\delta_i$  when  $\Delta I_t < 0$ , and  $\delta_i + \eta_i$  when  $\Delta I_t > 0$ .

Analogously, the size or magnitude asymmetry can be assessed through the following model:

$$R_{it} = \alpha_i + \beta_{mi}\mu_{mt} + \delta_i\Delta I_t + \phi_i D_t^{mag} + \eta_i D_t^{mag} \Delta I_t + \varepsilon_{it} \quad (6)$$

The dummy variable  $D_t^{mag}$  is equal to 1 if  $\Delta I_t \geq z_U$  or  $\Delta I_t < z_L$  where  $z_U$  and  $z_L$  indicate the upper and lower threshold levels, respectively, that discriminate between small and large interest rate movements, and  $D_t^{mag} = 0$  otherwise. The threshold values  $z_L$  are calculated as  $\overline{\Delta I_t} + 2\sigma_{\Delta I_t}$  and  $\overline{\Delta I_t} - 2\sigma_{\Delta I_t}$ , respectively. Thus, the response of bank stock returns will be equal to  $\delta_i + \eta_i$  when  $\Delta I_t \geq z_U$  or  $\Delta I_t < z_L$ , and  $\delta_i$  in the remaining cases.

Both models can be used to estimate the coefficients associated to interest rate fluctuations of different sign or size, but they do not offer a direct test of asymmetry. Thus, in order to directly test the asymmetry hypothesis equations (5) and (6) can be rewritten as follows:

$$R_{it} = (\alpha_i + \phi_i D_t^{sign}) + \beta_{mi}\mu_{mt} + (\delta_i + \eta_i D_t^{sign})\Delta I_t + \varepsilon_{it} \quad (7)$$

$$R_{it} = (\alpha_i + \phi_i D_t^{mag}) + \beta_{mi}\mu_{mt} + (\delta_i + \eta_i D_t^{mag})\Delta I_t + \varepsilon_{it} \quad (8)$$

As Koutmos and Martin (2003) point out, a test for asymmetry is equivalent to testing that  $\eta_i$  is statistically significant irrespective of the sign of the coefficient.

## 4.2. Nonparametric Model

All the model specifications discussed above require a specific functional form and assume that it does not change during the sample period. In this section, however, the measurement of banks' interest rate exposure is tackled from a completely different perspective, using nonparametric estimation techniques. The primary advantage of this method is its flexibility, as it allows estimating the relationship between movements in interest rates and bank stock returns without adhering to a particular function. Specifically, the local linear regression developed by Stone (1977) is employed to avoid the well-known problem of misspecification in the functional form inherent to traditional parametric models. The basic idea behind the local linear approach is to fit a linear regression locally around a neighbourhood of each data point in the sample, giving a greater weight to closer neighbours. This procedure has a higher asymptotic efficiency and allows for faster convergence at boundary points compared to other nonparametric methods (Fan and Gijbels, 1996).

Under this framework, it is assumed that the relationship between bank asset returns and interest rate changes is given by the following generic model:

$$\hat{R}_{it}^e = m(\Delta I_t) + \varepsilon_{it} \quad (9)$$

where  $\hat{R}_{it}^e$  is the abnormal return on asset  $i$  in period  $t$ , calculated as  $\hat{R}_{it}^e = R_{it} - \hat{\beta}_i \mu_{mt}$ , i.e. eliminating the impact of market-wide factors on individual asset returns.  $\mu_{mt}$  denotes the orthogonalized market portfolio return and the parameter  $\hat{\beta}_i$  is estimated using the classical market model. In turn,  $m(\Delta I_t)$  represents an unknown smooth function and  $\varepsilon_{it}$  is a random error term.

The unknown function  $m(\Delta I_t)$  can be approximated through a Taylor series expansion around a given point  $\Delta I_j$ , such that:

$$m(\Delta I_t) \approx m(\Delta I_j) + m'(\Delta I_j)(\Delta I_t - \Delta I_j) = a_j + b_j(\Delta I_t - \Delta I_j) \quad (10)$$

where  $m'(\Delta I_j)$  is the partial derivative of  $m(\Delta I_j)$  with respect to  $\Delta I$ , also called marginal effect or response and it is similar in interpretation to the regression coefficient (slope) in a linear regression model.

The local linear regression is equivalent to finding  $a_j$  and  $b_j$  to minimize the following weighted objective function:

$$\sum_{i=1}^N \left\{ \hat{R}_i^e - [a_j + b_j(\Delta I_t - \Delta I_j)] \right\}^2 / K_j \quad (11)$$

where  $K_j = K(\Delta I_t - \Delta I_j)/h$  is a kernel function and  $h$  denotes the bandwidth parameter of the kernel, respectively. The kernel function assigns weights to the data points improving the system of local averaging. This function assigns more importance, and so weight, to a point closer to the point of interest than to one further away. Therefore, the kernel determines the weight that the observation  $\Delta I_t$  receives in estimating the value of  $\hat{R}_i^e$  at target point  $\Delta I_j$ . The Gaussian kernel, which is one of the most popular kernel functions in financial applications, is used in this study. The bandwidth indicates how much “local” the estimator is. For every point  $\Delta I_j$ , the bandwidth dictates the width of the neighbourhood on which the estimation of  $m(\Delta I_j)$  is based. As Fan and Gijbels (1996) indicate, the choice of the bandwidth parameter may have crucial repercussions on the results of nonparametric regressions. Following a usual practice in the literature, when the standard Gaussian kernel is employed the optimal bandwidth is computed

according to the Silverman's rule of thumb. This value is given by the formula  $h = 1.06 \cdot \sigma_{\Delta I_t} / N^{0.2}$ , where  $\sigma_{\Delta I_t}$  is the sample standard deviation of the interest rate change series and  $N$  the number of observations. Notice that this local regression uses only observations close to the point  $\Delta I_j$  to minimize the sum of squared residuals, so that the estimates of  $a$  and  $b$  are not longer constants but functions of  $\Delta I_j$ .

After estimating the coefficient  $b_j$  for every point in the sample, the sample mean of these pointwise estimates can be used in the same way as the estimated coefficient of the parametric regression model. Rilstone (1991) shows that this estimator is consistent and asymptotically normally distributed and its standard errors are comparable to those from traditional parametric estimation. As a result, hypothesis tests can be easily conducted to compare the nonparametric estimates with their parametric counterparts.

## **5. Empirical results**

Table 3 presents the interest rate exposure coefficients from the different models. The first four columns report the coefficient estimates of the parametric specifications, and the fifth column shows the estimates of the nonparametric approach. Panel A provides the exposure estimates for the entire sample period, and Panels B and C for the pre-euro and post-euro sub-periods, respectively.

### **5.1. Linear interest rate exposure**

The exposure coefficients from the two-index linear model in Eq. (1) are negative and statistically significant at the conventional levels for the whole sample regardless of the portfolio and interest rate proxy used. This implies that Spanish banks are, on average, adversely impacted by rises in interest rates. The inverse relationship

between movements in interest rates and bank stock returns is consistent with the typical bank balance sheet maturity structure, where long-term assets are funded with short-term liabilities (positive duration gap). This negative link is also in accordance with most of the existing literature on bank IRR (e.g., Elyasiani and Mansur, 1998; Au Yong and Faff, 2008; and Czaja et al., 2009 and 2010). The interest rate sensitivity of banking firms varies depending on the interest rate variable chosen. Thus, the exposure coefficients associated with changes in 10-year government bond yields are larger in absolute value than those estimated with 3-month interbank rates. Further, the small banks portfolio shows the lowest coefficients in absolute values and  $R^2$ , suggesting that smaller banks are the least vulnerable to linear IRR. This is consistent with the idea that Spanish small banks have a stock market behaviour hardly influenced by interest rate fluctuations, but rather dependent on idiosyncratic risk factors.

## **5.2. Nonlinear interest rate exposure**

The results of the nonlinear specification broadly corroborate the findings of the linear model. As is shown in the second column of Table 3, the cubic function permits to identify an important extent of nonlinear exposure to IRR during the entire sample period. In particular, all bank portfolios exhibit a significant nonlinear exposure irrespective of the interest rate variable under consideration. The sign of the nonlinear coefficients is negative in all cases, confirming that decreases in interest rates have a positive effect on Spanish banking firms. This result reinforces the widespread view that banks tend to maintain a positive mismatch between the maturity of their assets and liabilities. As in the linear model, the exposure coefficients are larger in absolute value when movements in 10-year government bond yields are used and the lowest coefficients and  $R^2$  are observed for the small banks portfolio.

Since the independent variables in the linear and nonlinear models are different, in order to compare the economic importance of both types of exposure the product of the estimated exposure coefficient with one standard deviation of the interest rate proxy is computed for all portfolios exhibiting both significant linear and nonlinear exposure. As argued by Bartram (2002), this procedure makes the coefficients comparable as it standardizes the variables across regression specifications. The results displayed in Table 4 indicate that the linear exposure coefficients are always greater, in absolute value, than nonlinear coefficients during the entire sample period. This implies that, in general, the linear interest rate exposure of Spanish banks is economically more important than the nonlinear exposure measured using a cubic function. This finding coincides with that reported by Ferrer et al. (2010) for the banking sector in an analysis of the interest rate exposure of Spanish firms carried out at the industry level.

### **5.3. Asymmetries in interest rate exposure**

In line with the previous specifications, the findings of the estimation of the sign and size asymmetric models, also reported in Table 3, show the prevalence of negative exposure for the whole sample. With regard to the sign asymmetry, bank portfolio returns seem, in general, more sensitive to falling than to rising interest rates, especially for movements in 3-month interbank rates. Concerning the size or magnitude asymmetry, larger interest rate fluctuations appear to have a greater impact on portfolio returns than smaller interest rate changes. Once again, the lowest explanatory power of the asymmetric models is observed for the small banks portfolio. However, the results of the direct tests of sign and magnitude asymmetry presented in Table 5 do not support the existence of significant asymmetries in interest rate exposure for the full sample period, principally for the medium and small banks portfolios. As can be seen, the

coefficient of asymmetry  $\eta_i$  is not statistically different from zero in the vast majority of cases.

#### **5.4. Nonparametric analysis**

The interpretation of nonparametric estimates is more complicated than that of linear parametric estimates. This is because the simple linear model assumes that the response of the dependent variable to changes in any explanatory variable is constant regardless of the level of the explanatory variable, while the nonparametric methods do not place such restrictions on the data. The estimation output of a nonparametric regression model consists of an estimate of the regression function and the marginal effect or response coefficient (for each regressor) at every point in the sample. Accordingly, this output can be difficult to interpret, being instructive its graphical representation.

The nonparametric estimates of the response coefficients of bank portfolio returns to changes in interest rates and their associated 95% confidence bands are displayed in Figure 2.<sup>7</sup> The pointwise estimates show that the marginal effect of movements in interest rates on bank portfolios is not constant and negative at all levels of interest rate fluctuations during the full sample period irrespective of the portfolio and interest rate variable under consideration, in line with the inverse relationship found in the parametric specifications.

In order to facilitate comparisons with the parametric models, the fifth column of Table 3 presents the average estimates, computed as the sample mean of the pointwise estimates, of the interest rate sensitivity of each portfolio and their associated standard errors obtained with the nonparametric analysis. As it can be seen, the mean

---

<sup>7</sup> The nonparametric analysis presented in this paper has been performed using the NP package for the R programming environment developed by Hayfield and Racine (2008).

nonparametric estimates are very similar, both in absolute value and statistical significance, to the linear estimates. Thus, the nonparametric approach supports the results of the parametric estimations in terms of the negative influence of interest rate fluctuations, the higher sensitivity to changes in 10-year government bond yields, and the lower vulnerability of smaller banks to IRR. Interestingly, the regression standard errors are much lower for nonparametric estimates than for their parametric counterparts, indicating that more reliable and precise results are obtained by using the nonparametric analysis. It is also important to note that the nonparametric model produces higher  $R^2$  than the different parametric specifications considered. These findings seem to suggest that the nonparametric approach is better able to model the impact of IRR on Spanish banks than the parametric models.

### **5.5. Sub-period analysis**

The analysis by sub-periods reveals a sharp reduction in interest rate exposure during the post-euro era for all the model specifications, portfolios and interest rate variables. This seems to indicate that the relative importance of IRR in explaining bank stock return variability has declined since the launch of the euro. A possible explanation for this finding is closely related to the smaller variability of interest rates during the post-euro period in an environment of historically low interest rates along with the greater availability of more advanced IRR management tools. In this regard, banking institutions may have benefited from the large-scale use of interest rate derivatives and the increasing depth and breadth of European corporate bond markets with the advent of the euro to improve their management of IRR.

In the pre-euro period all the significant exposure coefficients have negative sign irrespective of the model considered. Further, there seems to be a size effect as the large



banks portfolio always exhibits the highest interest rate exposure. In turn, 10-year government bond yields are found to exert the highest influence in absolute value on the stock performance of Spanish banks. Also, the absolute values of the pre-euro exposure coefficients are greater than those corresponding to the entire sample period.

The post-euro period shows, however, very different results. The number of significant exposure coefficients is considerably lower than that obtained in the pre-euro era regardless. Moreover, the few significant coefficients are almost all positive, suggesting that for this period decreases in interest rates would adversely affect Spanish banks. This result is in conflict with the negative relationship between bank stock returns and interest rate fluctuations typically documented in the literature (e.g., Flannery and James, 1984; Madura and Zarruk, 1995; Elyasiani and Mansur, 1998; or Czaja et al., 2009 and 2010). Nevertheless, this evidence is in line with the results of Ferrer et al. (2010), who find a positive interest rate exposure for the Spanish banking industry after the introduction of the euro.

Two key reasons may help to explain this apparently anomalous finding (positive exposure). First, the substantial reduction in banks' asset-liability maturity mismatch over the last years due to the confluence of several new banking trends. On the one hand, the massive use of adjustable rate products tied to interbank rates since the mid-1990s, mainly in the mortgage segment. On the other hand, the extraordinary expansion of asset securitization along with the increased use of interest rate derivatives for hedging purposes may also have played a crucial role in this context.<sup>8</sup> Second, the positive exposure may reflect serious difficulties of banks to maintain their margins at

---

<sup>8</sup> According to the European Securitisation Forum Data Report 2010:Q1, since 2006 Spain constitutes one of the largest countries in terms of issuance volumes and outstanding balances in the European securitised debt markets. In particular, during 2009 Spain was the third country with respect to the issuance volume (€62.4 billion) and the second according the outstanding balance with nearly €250 billion.

reasonable levels in a falling interest rate scenario. Thus, when interest rates are very low banking firms face to a narrowing of the lending-deposit rate spread since a positive interest rate on their deposit accounts is required by customers. This argument is consistent with the gradual compression in bank margins within an environment of pronounced decline in interest rates and fierce competition as the occurred in the Spanish banking industry over the past decade.

The response plots of bank portfolio returns to changes in interest rates under the nonparametric approach presented in Figure 2 confirm the change from negative to positive response from the pre- to the post-euro period for all the portfolios. Furthermore, it is worth noting a substantial increase in the standard errors of the estimates for the post-euro period regardless of the model under consideration. This loss of precision implies that more caution in the interpretation of the results for the post-euro era is required. In addition, the  $R^2$  are much higher for the first sub-period irrespective of the model specification, interest rate proxy, and bank portfolio considered, so indicating a better model fit. These findings suggest that both the parametric and nonparametric models work reasonably well in the pre-euro period, but no equally well in the post-euro period, supporting, therefore, the notion that the degree of interest rate exposure faced by Spanish banks has significantly been reduced after the adoption of the euro. Lastly, the tests of asymmetry in Table 5 show the almost total absence of significant sign and size asymmetries in interest rate exposure during the pre- and post-euro periods.

## **5.6. Robustness analysis**

To check the robustness of the results, the analysis at the portfolio level is complemented with a firm-level analysis. Overall, the findings at the individual bank level, reported in Table 6, are broadly consistent with those from the portfolios. Thus,

the negative interest rate exposure prevails for individual banks during the whole sample and pre-euro periods irrespective of the model under consideration. In contrast, the post-euro period exhibits a substantially lower degree of exposure and the impact of IRR is predominantly positive, indicating that banking firms now would take advantage from rises in interest rates. Further, the results of this robustness analysis confirm that changes in 10-year government bond yields have a larger influence on the stock market performance of Spanish banks than movements in 3-month interbank rates.

## **6. Conclusions**

This paper presents a comprehensive analysis of the interest rate exposure of the Spanish banking industry employing both parametric and nonparametric estimation methods. Its main contribution is to use, for the first time in the field of the measurement of IRR faced by banks, a nonparametric regression model that avoids the prior specification of a specific functional form.

The empirical analysis sheds light on several important issues. Overall, the Spanish banking sector shows a significant degree of interest rate exposure, although the introduction of the euro has led to a substantial decline of the impact of interest rate changes on bank stock returns. This lower interest rate sensitivity during the post-euro period may be a result of factors such as the remarkable stability in interest rates in the historically low interest rate environment associated with the European monetary union, or the increased availability of improved tools for managing IRR in recent years. Contrary to the evidence typically documented in the literature, a pattern of positive exposure seems to emerge in the post-euro era, which can be attributed to two main reasons. First, the dramatic reduction in the maturity mismatch between banks' assets and liabilities caused by the combination of several recent banking trends such as the

overwhelming predominance of adjustable rate products, the explosive growth of asset securitization, or the rapid proliferation of derivative securities. Second, the positive exposure may also reflect the downward pressure on bank margins arising from increased competition in a scenario of marked downward trend in interest rates in force over the last years. A significant nonlinear exposure to IRR, measured through a cubic function, is also found, but the traditional linear exposure profile prevails in terms of economic magnitude over the nonlinear one. Further, there is no evidence of significant sign and size asymmetries during the full sample period and the pre- and post-euro periods.

The results of the nonparametric estimation in terms of both absolute value and statistical significance of exposure coefficients are similar to those from the parametric specifications. However, the standard errors of the nonparametric estimates are much lower and the nonparametric model has greater explanatory power than the parametric models. These findings support the reliability of the nonparametric approach to assess the extent of IRR faced by Spanish banks. The better performance of the nonparametric model may be attributed to its high flexibility to capture nonlinear effects in the link between bank stock returns and interest rate fluctuations, and supports the expansion of the conventional linear model to gain a better insight into the degree of exposure to IRR. Moreover, the results by sub-periods indicate that the fit of the models is substantially better in the pre-euro period. Another interesting result is that the lowest interest rate sensitivity is observed for the small banks portfolio regardless of the model under consideration, suggesting that Spanish smaller banks, because of their idiosyncratic nature, have a market stock performance less vulnerable to IRR.

## References

- Abad, P., 2005. Credit, liquidity and market risk in the term structure of swaps in pesetas, *Revista de Economía Financiera*, 5, 67-85.
- Arango, L.E., González, A. and C.E. Posada, 2002. Returns and the interest rate: a non-linear relationship in the Bogotá stock market, *Applied Financial Economics*, 12, 835-842.
- Au Yong, H.H. and R. Faff, 2008. Asia-Pacific banks risk exposures: Pre and post the Asian financial crisis, *Applied Financial Economics*, 18, 431-449.
- Aysun, U. and M. Guldi, 2009. Exchange rate exposure: A nonparametric approach. Working Paper No 2009-18 Department of Economics, University of Connecticut.
- Ballester, L., Ferrer, R. and C. González, 2009. Impacto del riesgo de interés sobre las acciones del sector bancario español”, *Revista Española de Financiación y Contabilidad*, XXXVIII, 213-238.
- Bartram, S.M., 2002. The Interest Rate Exposure of Nonfinancial Corporations, *European Finance Review*, 6, 101-125.
- Bartram, S.M., 2004. Linear and nonlinear foreign exchange rate exposures of German Nonfinancial Corporations, *Journal of International Money and Finance*, 23, 673-699.
- Benink, H. and C. Wolff, 2000. Survey Data and the Interest Rate Sensitivity of US Bank Stock Returns, *Economic Notes*, 29, 201-213.
- Chen, C.R. and A. Chan, 1989. Interest rate sensitivity, asymmetry, and the stock returns of financial institutions, *Financial Review*, 24, 457-473.
- Czaja, M., Scholz, H., and M. Wilkens, 2009. Interest Rate Risk of German Financial Institutions: The Impact of Level, Slope, and Curvature of the Term Structure, *Review of Quantitative Finance and Accounting*, 33, 1-26.
- Czaja, M., Scholz, H., and M. Wilkens, 2010. Interest Rate Risk Rewards in Stock Returns of Financial Corporations: Evidence from Germany, *European Financial Management*, 16, 124-154.
- Elyasiani, E. and I. Mansur, 1998. Sensitivity of the bank stock returns distribution to changes in the level and volatility of interest rate: A GARCH-M Model, *Journal of Banking and Finance*, 22, 535-563.
- European Securitisation Forum, 2010. ESF Securitisation Data Report Q1, London, UK.
- Faff, R.W. and P.F. Howard, 1999. Interest rate risk of Australian financial sector companies in a period of regulatory change, *Pacific-Basin Finance Journal*, 7, 83-101.
- Faff, R.W., Hodgson, A. and M.L. Kremmer, 2005. An investigation of the impact of interest rates and interest rate volatility on Australian financial sector stock return distributions, *Journal of Business Finance & Accounting*, 32, 1001-1032.

- Fan, I. and I. Gijbels, 1996. *Local polynomial modeling and its applications*. London, UK: Chapman & Hall.
- Fernández, A.I. and M. García, 1992. Sensibilidad al tipo de interés de los rendimientos de capital en las entidades bancarias, *Revista Europea de Dirección y Economía de la Empresa*, 1, 99-105.
- Ferrer, R., González, C. and G. Soto, 2008. Análisis sectorial de la exposición al riesgo de interés de las empresas españolas, *Información Comercial Española. Revista de Economía*, 841, 135-148.
- Ferrer, R., González, C. and G. Soto, 2010. Linear and nonlinear interest rate exposure in Spain, *Managerial Finance*, 36, 431-451.
- Flannery, M.J. and C.M. James, 1984. The effect of interest rate changes on the common stock returns of financial institutions, *Journal of Finance*, 39, 1141-1153.
- Fraser, D.R., Madura, J. and R.A. Weigand, 2002. Sources of Bank Interest Rate Risk, *Financial Review*, 37, 351-368.
- Guo, J.T. and R.C. Wu, 1998. Financial liberalization and the foreign exchange exposure effect: A nonparametric analysis of Taiwan, *Multinational Financial Journal*, 2, 1-26.
- Hallerbach, W.G., 1994. Theoretical and empirical aspects of the relation between interest rates and common stock returns, en: D'Ecclesia, R.L. and Zenios, S.A. (Eds.), *Operations Research Models in Quantitative Finance*, Physica/Springer Verlag, Heidelberg, 112-133.
- Hayfield, T. and J.S. Racine, 2008. Nonparametric Econometrics: The np Package. *Journal of Statistical Software*, 27, 1-32.
- Hirtle, B.J., 1997. Derivatives, portfolio composition, and bank holding company interest rate risk exposure, *Journal of Financial Services Research* 12, 243-266.
- Jareño, F., 2006. Sensibilidad de los rendimientos sectoriales a tipos de interés reales e inflación, *Investigaciones Económicas*, 30, 577-610.
- Jareño, F., 2008. Spanish stock market sensitivity to real interest and inflation rates. An extension of the Stone two-factor model with factors of the Fama and French three factor model, *Applied Economics*, 40, 3159-3171.
- Jareño, F. and E. Navarro, 2010. Stock interest rate risk and inflation shocks, *European Journal of Operational Research*, 201, 337-348.
- Joseph, N.L. and P. Vezos, 2006. The sensitivity of US banks' stock returns to interest rate and exchange rate changes, *Managerial Finance*, 32, 182-199.
- Koutmos, G. and A.D. Martin, 2003. Asymmetric exchange rate exposure: theory and evidence, *Journal of International Money and Finance*, 22, 365-383.
- López, G., 2002. Análisis de la sensibilidad a las variaciones en los tipos de interés de las acciones bancarias, Working Paper Instituto Valenciano de Investigaciones Económicas, Serie EC No 4.
- Madura, M. and E. Zarruk, 1995. Bank exposure to interest rate risk: A global perspective, *Journal of Financial Research*, 18, 1-13.

- Novales, A. and S. Benito, 2007. A factor analysis of volatility across the term structure: the Spanish case, *Revista de Economía Financiera*, 13, 8-27.
- Oertmann, P., Rendu, C. and H. Zimmermann, 2000. Interest rate risk of European financial corporations, *European Financial Management*, 6, 459-478.
- Priestley, R. and B.A Odegaard, 2007. Linear and nonlinear exchange rate exposure, *Journal of International Money and Finance*, 26, 1016-1037.
- Rilstone, P., 1991. Nonparametric hypothesis testing with parametric rates of convergence, *International Economic Review*, 32, 207-227.
- Ryan, S. and A.C. Worthington, 2004. Market, interest rate and foreign exchange rate risk in Australian banking: A GARCH-M approach, *International Journal of Applied Business and Economic Research*, 2, 81-103.
- Saporoshenko, A., 2002. The sensitivity of Japanese bank stock returns to economic factors - An examination of asset/liability differences and main bank status, *Global Finance Journal*, 13, 253-270.
- Soto, G., Ferrer, R. and C. González, 2005. Determinants of interest rate exposure of Spanish nonfinancial firms, *European Review of Economics and Finance*, 4, 55-71.
- Staikouras, S.K., 2003. The interest rate risk exposure of financial intermediaries: A review of the theory and empirical evidence, *Financial Markets, Institutions and Instruments*, 12, 257-289.
- Staikouras S.K., 2006. Financial intermediaries and interest rate risk: II, *Financial Markets, Institutions and Instruments*, 15, 225-272.
- Stone, B.K., 1974. Systematic interest rate risk in a two-index model of returns, *Journal of Financial and Quantitative Analysis*, 9, 709-721.
- Stone, C., 1977. Consistent nonparametric regression, *The Annals of Statistics*, 5, 595-645.
- Tai, C. S., 2005. Asymmetric currency exposure of US bank stock returns, *Journal of Multinational Financial Management*, 15, 455-472.
- Verma, P. and D. Jackson, 2008. Interest rate and bank stock returns asymmetry: Evidence from US banks, *Journal of Economics and Finance*, 32, 105-118.

## **Annex: Tables and Graphs**

**Table 1**  
**Composition of bank portfolios and descriptive statistics of individual and portfolio weekly returns**  
**Entire sample period (1993-2008)**

<b>Bank</b>	<b>Ticker</b>	<b>Obs.</b>	<b>Asset Volume (€x 10<sup>3</sup>)</b>	<b>Mean</b>	<b>Standard error</b>	<b>Minimum</b>	<b>Maximum</b>	<b>Skewness</b>	<b>Kurtosis (excess)</b>	<b>Jarque- Bera</b>
<b>Portfolio L</b>		<b>835</b>		<b>0.003</b>	<b>0.039</b>	<b>-0.202</b>	<b>0.207</b>	<b>-0.110</b>	<b>4.082<sup>***</sup></b>	<b>581.46<sup>***</sup></b>
Banco Santander Central Hispano	BSCH	506	527.699.133	0.0007	0.043	-0.213	0.231	-0.173	4.005 <sup>***</sup>	341.45 <sup>***</sup>
Banco Bilbao Vizcaya Argentaria	BBVA	464	346.037.438	0.0008	0.045	-0.185	0.233	0.281	4.073 <sup>***</sup>	328.26 <sup>***</sup>
Banco Bilbao Vizcaya	BBV	366	178.232.614	0.007	0.040	-0.193	0.174	-0.210	3.592 <sup>***</sup>	200.04 <sup>***</sup>
Banco Santander	SAN	325	138.205.050	0.007	0.045	-0.181	0.215	0.030	3.333 <sup>***</sup>	151.41 <sup>***</sup>
Banco Central Hispano	BCH	325	71.668.583	0.005	0.038	-0.162	0.165	0.189	2.137 <sup>***</sup>	64.03 <sup>***</sup>
Argentaria	ARG	349	71.360.857	0.004	0.038	-0.148	0.117	-0.044	0.994 <sup>***</sup>	14.50 <sup>***</sup>
<b>Portfolio M</b>		<b>835</b>		<b>0.002</b>	<b>0.025</b>	<b>-0.110</b>	<b>0.133</b>	<b>0.096</b>	<b>3.068<sup>***</sup></b>	<b>328.80<sup>***</sup></b>
Banesto	BTO	828	54.805.640	0.001	0.034	-0.218	0.157	0.160 <sup>*</sup>	6.101 <sup>***</sup>	1289.6 <sup>***</sup>
Banco Popular Español	POP	830	43.308.947	0.003	0.037	-0.161	0.200	0.370 <sup>***</sup>	3.759 <sup>***</sup>	510.94 <sup>***</sup>
Banco Exterior	EXT	223	34.941.640	-0.001	0.014	-0.056	0.065	0.653 <sup>***</sup>	5.870 <sup>***</sup>	336.06 <sup>***</sup>
Banco Sabadell	SAB	402	28.529.393	0.001	0.028	-0.120	0.102	-0.462 <sup>***</sup>	2.590 <sup>***</sup>	126.72 <sup>***</sup>
Bankinter	BKT	831	22.133.367	0.003	0.043	-0.134	0.356	1.076 <sup>***</sup>	7.752 <sup>***</sup>	2252.0 <sup>***</sup>
Banco Pastor	PAS	831	12.177.073	0.002	0.030	-0.107	0.168	0.453 <sup>***</sup>	3.121 <sup>***</sup>	366.76 <sup>***</sup>
Banco Atlántico	ATL	585	7.807.936	0.003	0.026	-0.150	0.4066	7.071 <sup>***</sup>	99.606 <sup>***</sup>	252193.9 <sup>***</sup>
<b>Portfolio S</b>		<b>835</b>		<b>0.001</b>	<b>0.015</b>	<b>-0.079</b>	<b>0.101</b>	<b>-0.050</b>	<b>5.210<sup>***</sup></b>	<b>945.046<sup>***</sup></b>
Banco Valencia	BVA	830	6.713.193	0.003	0.028	-0.119	0.175	0.816 <sup>***</sup>	4.236 <sup>***</sup>	714.73 <sup>***</sup>
Banco Guipuzcoano	GUI	828	5.123.700	0.001	0.026	-0.114	0.198	1.126 <sup>***</sup>	8.958 <sup>***</sup>	2961.48 <sup>***</sup>
Banco Andalucía	AND	832	5.097.787	0.001	0.025	-0.169	0.119	-0.234 <sup>***</sup>	5.587 <sup>***</sup>	1091.1 <sup>***</sup>
Banco Zaragozano	ZRG	548	4.713.960	0.003	0.030	-0.097	0.217	1.387 <sup>***</sup>	7.364 <sup>***</sup>	1460.4 <sup>***</sup>



Banco Herrero	HRR	411	2.944.989	0.002	0.054	-0.222	0.853	9.416***	148.299***	384562.7***
Banco de Castilla	CAS	829	2.709.587	0.001	0.026	-0.184	0.258	0.882***	15.908***	8860.5***
Banco Galicia	GAL	827	2.233.393	0.001	0.023	-0.138	0.122	-0.004	5.703***	1119.5***
Banco de Vasconia	VAS	830	1.846.067	0.0006	0.029	-0.223	0.138	-0.350***	8.256***	2371.8***
Banco de Vitoria	VIT	268	1.271.736	-0.001	0.035	-0.200	0.216	0.994***	14.150***	2280.0***
Banco Crédito Balear	CBL	826	1.098.787	0.0007	0.029	-0.200	0.254	0.702***	10.465***	3837.45***
Banco Alicante	ALI	276	872.386	-0.001	0.0113	-0.060	0.051	-0.060	8.226***	778.41***
Banco Simeón	SIM	287	836.763	-0.002	0.049	-0.384	0.322	-1.588***	23.551***	6753.8***
Market Portfolio (IGBM)		835		0.002	0.0274	-0.113	0.126	-0.375***	1.891***	144.17***

This table lists the Spanish individual commercial banks considered in this study and their grouping into three portfolios based on their size: large banks portfolio (portfolio *L*), medium banks portfolio (portfolio *M*) and small banks portfolio (portfolio *S*). The stock ticker symbol, number of observations and average volume of total assets for each individual bank are also reported. Descriptive statistics associated with individual and portfolio weekly returns are presented as well. \*\*\*, \*\* and \* denote statistical significance at the 1%, 5% and 10% levels, respectively.

**Table 2**  
**Descriptive statistics of the interest rate series**

	Mean	Standard. error	Minimum	Maximum
<b>Entire sample period (1993-2008)</b>				
IR10	0.0598	0.0255	0.0305	0.1263
$\Delta$ IR10	-0.0001	0.0013	-0.0062	0.0070
IR3	0.0497	0.0277	0.0198	0.1542
$\Delta$ IR3	-0.0001	0.0020	-0.0362	0.0209
<b>Pre-euro period (1993-1998)</b>				
IR10	0.0856	0.0243	0.0399	0.1263
$\Delta$ IR10	-0.0002	0.0018	-0.0062	0.007
IR3	0.0769	0.0265	0.0328	0.1542
$\Delta$ IR3	-0.0003	0.0031	-0.0362	0.0209
<b>Post-euro period (1999-2008)</b>				
IR10	0.0443	0.0067	0.0305	0.0586
$\Delta$ IR10	-0.000002	0.0009	-0.0029	0.0036
IR3	0.0334	0.0099	0.0198	0.054
$\Delta$ IR3	-0.00001	0.0007	-0.0054	0.0051

This table contains descriptive statistics for the series of interest rates considered in this study. Summary statistics are presented for the full sample period and the pre- and post-euro periods. IR10 denotes the series of yields on 10-year Spanish government bonds and IR3 the series of 3-month interbank rates.  $\Delta$  is the first difference operator.

**Table 3**  
**Exposure of bank portfolios to interest rate risk**

<b>Panel A: Entire sample period (1993-2008)</b>							
	<b>Linear Model (3)</b>	<b>Nonlinear Model (4)</b>	<b>Sign asymmetric Model (5)</b>		<b>Size asymmetric Model (6)</b>		<b>Nonparametric Model (11)</b>
	$\lambda_i$	$\theta_i$	$\delta_i$	$(\delta_i + \eta_i)$	$\delta_i$	$(\delta_i + \eta_i)$	$\bar{b}_j$
<b>10-year interest rate changes</b>							
Portfolio <i>L</i>	-2.305** (0.905)	-102670.3*** (31031.8)	-3.705** (1.706)	-1.982 (1.419)	-1.789 (1.357)	-2.842*** (0.935)	-2.234*** (0.054)
$R^2$ (%)	47.66	47.51	47.61		47.56		48.36
Portfolio <i>M</i>	-3.090*** (0.628)	-97596.8*** (22497.3)	-2.728** (1.108)	-3.043** (1.094)	-3.509*** (0.912)	-2.656*** (0.718)	-3.118*** (0.006)
$R^2$ (%)	28.03	26.46	27.86		27.90		29.08
Portfolio <i>S</i>	-1.640*** (0.405)	-62855.2*** (14172.3)	-0.738 (0.813)	-2.306*** (0.748)	-1.448** (0.612)	-1.810*** (0.493)	-1.613*** (0.045)
$R^2$ (%)	7.60	6.77	7.60		7.86		8.00
<b>3-month interest rate changes</b>							
Portfolio <i>L</i>	-1.590*** (0.488)	-1285.64*** (141.48)	-1.845*** (0.675)	-1.316 (0.460)	0.404 (1.726)	-1.749*** (0.410)	-1.677** (0.059)
$R^2$ (%)	47.64	47.28	47.54		48.11		48.45
Portfolio <i>M</i>	-1.073*** (0.377)	-514.66*** (124.10)	-1.178** (0.582)	-0.448 (0.276)	-0.532 (1.050)	-0.963** (0.403)	-1.510** (0.111)
$R^2$ (%)	27.28	26.70	27.21		27.73		28.27
Portfolio <i>S</i>	-0.412** (0.205)	-358.04*** (110.26)	-0.458* (0.265)	-0.274 (0.402)	0.395 (0.754)	-0.5020 (0.212)	-0.326 (0.024)
$R^2$ (%)	6.66	6.47	6.38		6.82		6.95
<b>Panel B: Pre-euro period (1993-1998)</b>							
<b>10-year interest rate changes</b>							
Portfolio <i>L</i>	-6.037*** (0.540)	-231892.3*** (30679.4)	-7.433*** (1.125)	-7.970*** (1.025)	-5.287*** (0.813)	-7.168*** (0.589)	-5.875*** (0.032)
$R^2$ (%)	72.19	69.91	72.59		72.26		89.39
Portfolio <i>M</i>	-4.963*** (0.508)	-155293.6*** (24062.3)	-5.835*** (1.033)	-3.787*** (1.129)	-5.163*** (0.697)	-4.890*** (0.658)	-5.008*** (0.054)
$R^2$ (%)	56.73	51.46	56.67		56.78		66.45
Portfolio <i>S</i>	-1.904*** (0.330)	-73900.7*** (12159.8)	-1.603* (0.888)	-2.353** (0.684)	-1.576*** (0.487)	-2.390*** (0.441)	-1.869*** (0.014)
$R^2$ (%)	17.51	16.63	17.04		17.15		18.77
<b>3-month interest rate changes</b>							
Portfolio <i>L</i>	-1.647*** (0.268)	-1730.74*** (192.01)	-1.951*** (0.259)	-1.952*** (0.234)	0.516 (1.054)	-2.046*** (0.111)	-1.216** (0.061)
$R^2$ (%)	74.17	71.09	71.69		72.14		77.35
Portfolio <i>M</i>	-1.250*** (0.251)	-857.64*** (172.16)	-1.170** (0.352)	-0.655 (0.301)	-0.488 (0.741)	-1.333*** (0.374)	-1.454*** (0.093)
$R^2$ (%)	58.33	55.44	56.87		57.25		60.28
Portfolio <i>S</i>	-0.548*** (0.150)	-474.05*** (131.46)	-0.673*** (0.200)	-0.504 (0.408)	-0.116 (0.540)	-0.606* (0.203)	-0.475*** (0.019)
$R^2$ (%)	5.88	17.04	17.07		17.38		18.44

**Panel C: Post-euro period (1999-2008)**

10-year interest rate changes							
Portfolio <i>L</i>	7.086** (2.873)	1039059.2 (909703.6)	1.309 (7.871)	11.011*** (4.659)	8.624*** (2.164)	3.352 (7.749)	7.352*** (0.696)
$R^2$ (%)	38.46	37.03	38.66	38.79	40.68		
Portfolio <i>M</i>	1.655 (1.828)	16315.34 (573103.6)	3.327 (4.6523)	-0.930 (3.299)	2.972** (1.484)	-0.568 (4.993)	1.967* (0.252)
$R^2$ (%)	14.14	13.78	14.05	14.28	14.68		
Portfolio <i>S</i>	-0.950 (1.132)	-459916.1 (343701.6)	0.619 (3.0016)	-3.173* (2.288)	0.045 (0.837)	-2.357* (2.907)	-0.731 (0.151)
$R^2$ (%)	2.98	3.98	3.10	3.72	3.69		
3-month interest rate changes							
Portfolio <i>L</i>	-1.443 (4.896)	-450821.4 (492240.6)	-4.552 (7.891)	1.134 (6.516)	1.198 (4.345)	-3.535 (6.596)	2.329 (0.853)
$R^2$ (%)	39.28	35.87	39.33	39.44	44.45		
Portfolio <i>M</i>	0.834 (2.706)	-191386.3 (263543.5)	0.002 (4.584)	0.909 (1.830)	3.192 (2.881)	-1.003 (3.389)	3.209** (0.463)
$R^2$ (%)	14.03	12.02	13.76	14.56	17.34		
Portfolio <i>S</i>	1.056 (1.762)	-13032.9 (161982.8)	2.131 (3.189)	0.129 (2.012)	-1.446 (2.092)	1.7622 (2.305)	1.290 (0.190)
$R^2$ (%)	2.15	1.59	2.01	2.38	2.99		

This table contains the interest rate exposure coefficients from estimating the parametric and nonparametric models considered for the three bank portfolios over the entire sample, pre- and post-euro periods. The 10-year Spanish government bond yield and 3-month interbank rate are used as proxies of market interest rates. Parametric models in Eq. (3), (4), (5) and (6) are estimated applying OLS. The cubic function is used for the estimation of the nonlinear model. Nonparametric model in Eq. (11) is estimated using the local linear regression method proposed by Stone (1977). The last column of this table reports the average nonparametric estimates. Standard errors are shown in parentheses. As usual, \*\*\*, \*\* and \* denote statistical significance at 1%, 5% and 10% levels, respectively.

(3) $R_{it} = \gamma_i + \beta_{mi}\mu_{mt} + \lambda_i\Delta I_t + \varepsilon_{it}$	(5) $R_{it} = \alpha_i + \beta_i\mu_{mt} + \delta_i\Delta I_t + \phi_i D_t^{sign} + \eta_i D_t^{sign} \Delta I_t + \varepsilon_{it}$ $D_t^{sign} = 1$ if $\Delta I_t > 0$ ; $D_t^{sign} = 0$ if $\Delta I_t < 0$
(4) $R_{it} = \alpha_i + \beta_{mi}\mu_{mt} + \theta_i f(\Delta I_t) + \varepsilon_{it}$	(6) $R_{it} = \alpha_i + \beta_i\mu_{mt} + \delta_i\Delta I_t + \phi_i D_t^{mag} + \eta_i D_t^{mag} \Delta I_t + \varepsilon_{it}$ $D_t^{mag} = 1$ ; $\Delta I_t \geq z_U$ and $\Delta I_t < z_L$ ; $D_t^{mag} = 0$ otherwise
(11) $Min \sum_{t=1}^N \left\{ \hat{R}_{it}^e - [a_j + b_j(\Delta I_t - \Delta I_j)] \right\}^2 / K_j$ ; $K_j = \frac{K(\Delta I_t - \Delta I_j)}{h}$ ; $h = 1.06 \cdot \sigma_{\Delta I_t} / N^5$	

**Table 4**  
**Economic significance of linear and nonlinear exposures**

	Linear exposure		Nonlinear exposure	
	(3)		(4)	
	10-year rate changes	3-month rate changes	10-year rate changes	3-month rate changes
<b>Panel A: Entire sample period (1993-2008)</b>				
Portfolio <i>L</i>	-0.0032	-0.0033	-0.0028	-0.0022
Portfolio <i>M</i>	-0.0043	-0.0022	-0.0026	-0.0009
Portfolio <i>S</i>	-0.0023	-0.0009	-0.0017	-0.0006
<b>Panel B: Pre-euro period (1993-1998)</b>				
Portfolio <i>L</i>	-0.0115	-0.0053	-0.0102	-0.0048
Portfolio <i>M</i>	-0.0095	-0.0041	-0.0068	-0.0024
Portfolio <i>S</i>	-0.0036	-0.0018	-0.0032	-0.0013
<b>Panel C: Post-euro period (1999-2008)</b>				
Portfolio <i>L</i>	0.0066	-0.0011	0.0042	-0.0053
Portfolio <i>M</i>	0.0016	0.0006	0.0001	-0.0023
Portfolio <i>S</i>	-0.0009	0.0008	-0.0018	-0.0002

This table reports the interest rate exposure coefficients multiplied by one standard error of the interest rate proxy for the three bank portfolios. Panel A refers to the whole sample period and Panels B and C to the pre- and post-euro periods, respectively. The exposures are estimated by regressing the portfolio returns on the market return and the interest rate variable. Nonlinear exposure is estimated using the cubic function.

**Table 5**  
**Asymmetries in interest rate exposure**

	Sign asymmetric Model		Size asymmetric Model	
	10-year rate changes	3-month rate changes	10-year rate changes	3-month rate changes
<b>Panel A: Entire sample period (1993-2008)</b>				
Portfolio <i>L</i>	0.473 <i>(1.218)</i>	0.023 <i>(0.472)</i>	-1.670* <i>(0.897)</i>	-1.742** <i>(0.902)</i>
Portfolio <i>M</i>	0.198 <i>(1.168)</i>	0.459 <i>(0.452)</i>	0.851 <i>(0.851)</i>	-0.926 <i>(0.800)</i>
Portfolio <i>S</i>	-1.452* <i>(0.851)</i>	0.293 <i>(0.318)</i>	-0.088 <i>(0.612)</i>	-0.907 <i>(0.628)</i>
<b>Panel B: Pre-euro period (1993-1998)</b>				
Portfolio <i>L</i>	-1.393 <i>(1.275)</i>	0.088 <i>(0.299)</i>	-1.181 <i>(0.823)</i>	-1.248 <i>(0.934)</i>
Portfolio <i>M</i>	2.212 <i>(1.399)</i>	0.430 <i>(0.421)</i>	0.623 <i>(0.896)</i>	-0.038 <i>(0.719)</i>
Portfolio <i>S</i>	0.058 <i>(0.761)</i>	0.485 <i>(0.306)</i>	-0.243 <i>(0.515)</i>	-0.358 <i>(0.459)</i>
<b>Panel C: Post-euro period (1999-2008)</b>				
Portfolio <i>L</i>	2.416 <i>(3.705)</i>	-0.105 <i>(3.632)</i>	1.361 <i>(2.566)</i>	2.871 <i>(1.945)</i>
Portfolio <i>M</i>	-5.193 <i>(3.293)</i>	1.338 <i>(3.753)</i>	5.676* <i>(2.938)</i>	-0.959 <i>(1.905)</i>
Portfolio <i>S</i>	-4.758* <i>(2.838)</i>	-0.513 <i>(3.195)</i>	1.261 <i>(2.547)</i>	-2.817 <i>(1.832)</i>

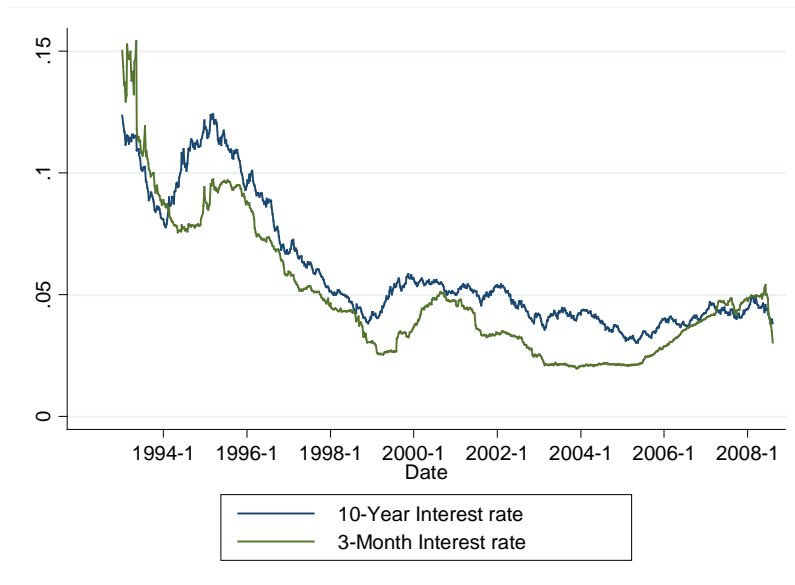
This table shows the results of the direct tests for sign and size or magnitude asymmetry in interest rate exposure using Equations (7) and (8), respectively. Panel A refers to the full sample period and Panels B and C to the pre- and post-euro periods, respectively. The test for asymmetry is equivalent to testing whether the coefficient  $\eta_i$  is statistically significant irrespective of the sign of the coefficient. Numbers in parentheses are standard errors. As usual, \*\*\*, \*\* and \* denote statistical significance at 1%, 5% and 10% levels, respectively.

**Table 6**  
**Percentage of individual banks with significant interest rate exposure**

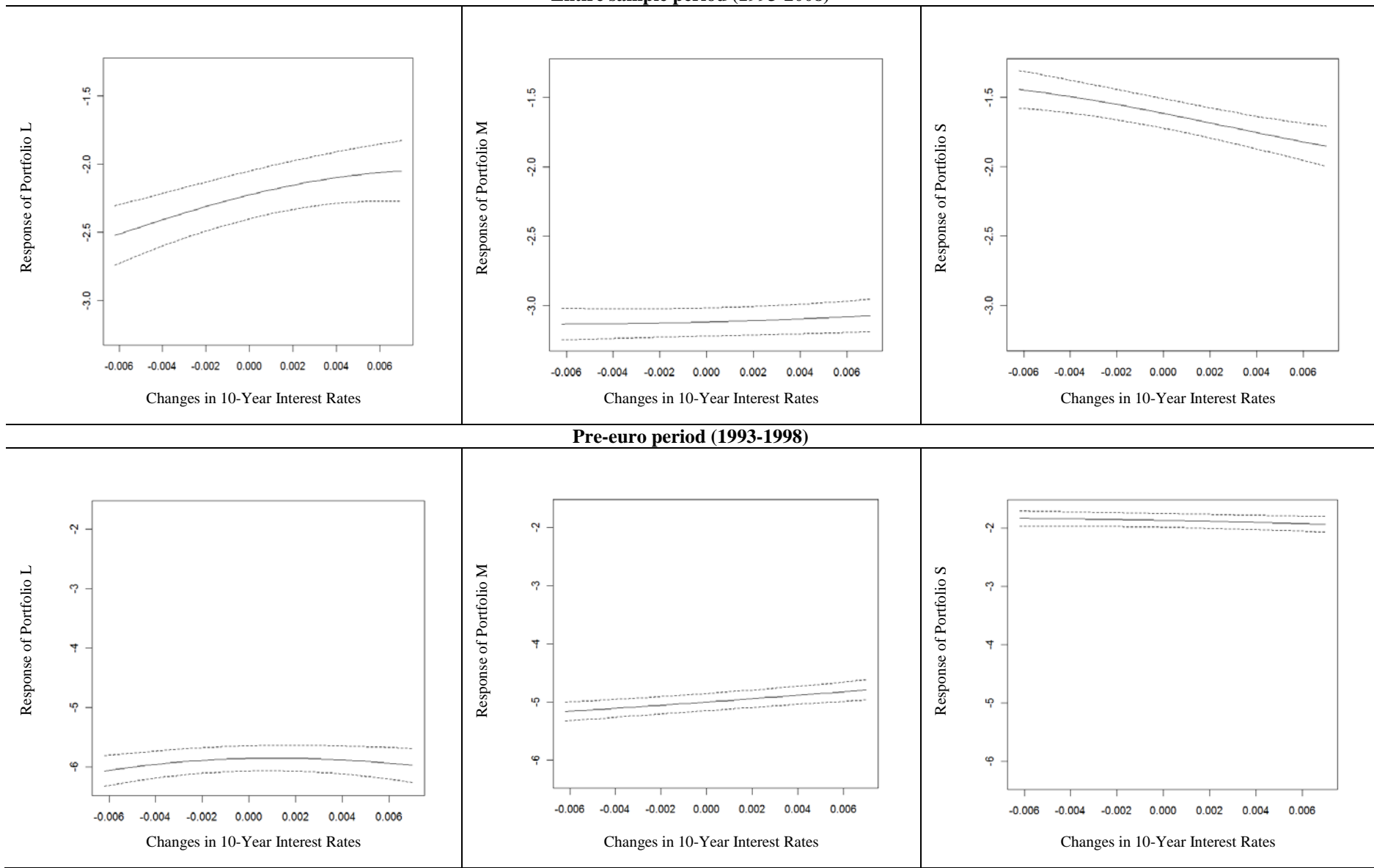
	<b>Linear Model (3)</b>	<b>Nonlinear Model (4)</b>	<b>Sign asymmetric Model (5)</b>		<b>Size asymmetric Model (6)</b>		<b>Nonparametric Model (11)</b>
	$\lambda_i$	$\theta_i$	$\delta_i$	$(\delta_i + \eta_i)$	$\delta_i$	$(\delta_i + \eta_i)$	$\hat{b}_j$
<b>Panel A: Entire sample period (1993-2008)</b>							
10-year interest rate changes							
% Positive	13.04%	17.39%	26.09%	13.04%	30.43%	17.39%	17.39%
% Negative	86.96%	82.61%	73.91%	86.96%	69.57%	82.61%	82.61%
% Positive Signif.	8.70%	4.35%	4.35%	0.00%	4.35%	4.35%	4.35%
% Negative Signif.	56.52%	43.48%	30.43%	39.13%	34.78%	52.17%	52.17%
% Signif.	65.22%	47.83%	34.78%	39.13%	39.13%	56.52%	56.52%
3-month interest rate changes							
% Positive	13.04%	13.04%	13.04%	30.43%	56.52%	13.04%	26.09%
% Negative	86.96%	86.96%	86.96%	69.57%	43.48%	86.96%	73.91%
% Positive Signif.	0.00%	4.35%	8.70%	8.70%	4.35%	0.00%	0.00%
% Negative Signif.	39.13%	78.26%	43.48%	34.78%	0.00%	39.13%	26.09%
% Signif.	39.13%	82.61%	52.17%	43.48%	4.35%	39.13%	26.09%
<b>Panel B: Pre-euro period (1993-1998)</b>							
10-year interest rate changes							
% Positive	9.09%	4.55%	13.04%	13.04%	18.18%	4.55%	13.64%
% Negative	90.91%	95.45%	86.36%	86.36%	81.82%	95.45%	86.36%
% Positive Signif.	0.00%	0.00%	0.00%	0.00%	4.55%	4.55%	0.00%
% Negative Signif.	77.27%	77.27%	45.45%	54.55%	68.18%	81.82%	77.27%
% Signif.	77.27%	77.27%	45.45%	54.55%	72.73%	86.36%	77.27%
3-month interest rate changes							
% Positive	9.09%	13.04%	9.09%	13.04%	36.36%	9.09%	13.64%
% Negative	90.91%	86.36%	90.91%	86.36%	63.64%	90.91%	86.36%
% Positive Signif.	0.00%	0.00%	4.55%	4.55%	0.00%	0.00%	0.00%
% Negative Signif.	63.64%	81.82%	68.18%	68.18%	13.64%	68.18%	36.36%
% Signif.	63.64%	81.82%	72.73%	72.73%	13.64%	68.18%	36.36%
<b>Panel C: Post-euro period (1999-2008)</b>							
10-year interest rate changes							
% Positive	72.22%	50.00%	72.22%	44.44%	77.78%	50.00%	77.78%
% Negative	27.78%	50.00%	27.78%	55.56%	22.22%	50.00%	22.22%
% Positive Signif.	16.67%	0.00%	16.67%	11.11%	38.89%	5.56%	44.44%
% Negative Signif.	5.56%	5.56%	0.00%	16.67%	0.00%	16.67%	5.56%
% Signif.	22.22%	5.56%	16.67%	27.78%	38.89%	22.22%	50.00%
3-month interest rate changes							
% Positive	66.67%	50.00%	66.67%	61.11%	44.44%	72.22%	77.78%
% Negative	33.33%	50.00%	33.33%	38.89%	55.56%	27.78%	22.22%
% Positive Signif.	16.67%	11.11%	27.78%	22.22%	5.56%	11.11%	33.33%
% Negative Signif.	0.00%	5.56%	0.00%	5.56%	0.00%	5.56%	0.00%
% Signif.	16.67%	16.67%	27.78%	27.78%	5.56%	16.67%	33.33%

% Positive denotes the percentage of positive exposure coefficients to the total number of commercial banks listed on the Spanish Stock Exchange in each period. Conversely, % Negative indicates the percentage of negative exposure coefficients. % Positive (Negative) Signif. indicates the percentage of positive (negative) exposure coefficients significantly exposed to interest rate risk. Lastly, % Signif. refers to the percentage of significant exposure coefficients to the total number of banks. The significance level used to consider an individual bank as significantly exposed to interest rate risk is 5%.

**Figure 1**  
**Time evolution of the series of interest rates**

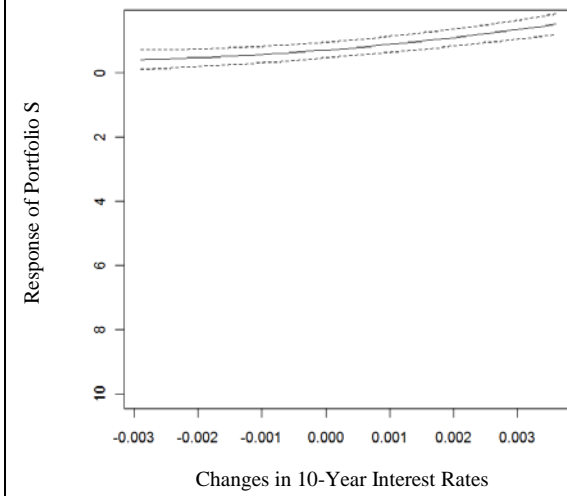
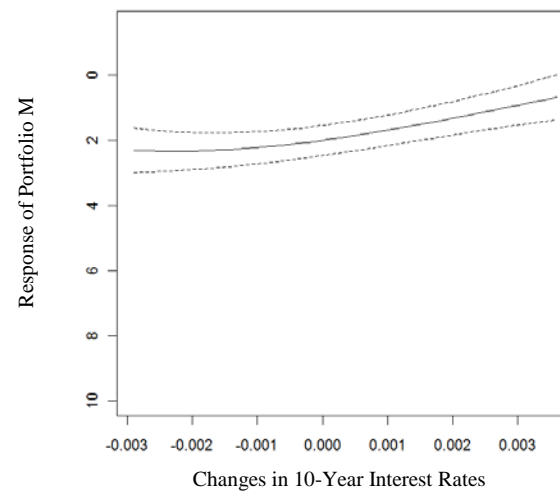
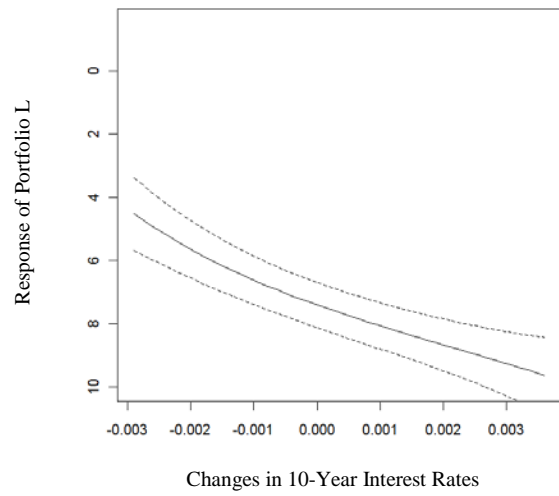


**Figure 2**  
**Nonparametric response coefficients of bank portfolio returns to changes in interest rates**  
**Entire sample period (1993-2008)**





Post-euro period (1999-2008)



Note: The solid lines indicate the estimated nonparametric response coefficients. The short-dashed lines are 95% confidence bands.